

Product datasheet for **RG234767**

FAM161A (NM_001201543) Human Tagged ORF Clone

Product data:

Product Type:	Expression Plasmids
Product Name:	FAM161A (NM_001201543) Human Tagged ORF Clone
Tag:	TurboGFP
Symbol:	FAM161A
Synonyms:	RP28
Mammalian Cell Selection:	Neomycin
Vector:	pCMV6-AC-GFP (PS100010)
E. coli Selection:	Ampicillin (100 ug/mL)



[View online »](#)

ORF Nucleotide Sequence:

>RG234767 representing NM_001201543
 Red=Cloning site Blue=ORF Green=Tags(s)

TTTTGTAATACGACTCACTATAGGGCGGCCGGAATTCGTCGACTGGATCCGGTACCGAGGAGATCTGCC
 GCC**CGCATCGCC**

ATGGCCACCTCCCACCGAGTGGCGAAGCTGGTGGCCTCCAGTCTCCAGACCCCGTAAATCCCATCACTG
 GAGCGCGGGTCGCCAGTACGAACGCGAAGACCCCTTAAAGGCCCTGGCGCAGCGGAGGCGATCTTGGA
 GGACGAAGAGGAGAGAAAGTGGCGCAGCCGCTGGGGCATCGGCTGATTTGAACACCAGCTTTTCTGGG
 GTGGATGAACATGCACCGATAAGCTATGAGGACTTTGTGAACCTTCTGATATTCACCACTCTAATGAGG
 AGTATTTCAAGAAAGTAGAAGAGTTGAAGGCTGCCACATAGAACTATGGCAAAATAGAGAAAATGTA
 CCAGGATAAATTACATTTAAAGGAAGTTCAGCCAGTGGTCATCAGAGAAGACTCTCTTAGTGACTCTTCC
 AGATCTGTATCAGAAAAGAAGCTCTATCACCTGTCTCATTAAATGACATCATTTTCAGAGCCTGATTTAG
 GCCAGTCTTCTCTTGTATGTGTCTCTCTGAAGAGGAGTTACCCAACCTAGAAAAAGAGTATCCTAG
 GAAAAACAGAATGATGACCTATGCTAAGGAGCTCATCAACAATATGTGGACAGACTTTTGTGTTGAGGAT
 TATATTCGCTGTAAGATACTGGCTTCCATGCAGCTGAAAAAGAAGGAAGAAAAAGAAAGATGGGTGC
 CCACAATTACAGTACCGAGCCTTTTCAAATGATGATAAGAGAACAAGAAAAAGAAAGAGTCCATGAA
 ATCTAAATCAGATATCGAAATGGTACATAAAGCGCTCAAAAAACAAGAAGAGGATCCAGAGTATAAGAAG
 AAATTCGAGCCAATCCAGTTCCTGCATCTGTCTTCTCCCCCTTACCATGATTTAGTCAAGCAAAAAAG
 AAGAACGGAGAAGGTCTCTGAAGGAGAAAAAGCAAGAAGCTCTTTTGGCCTCACAAAAGCCATTTAAATT
 TATAGCAAGGGAGGAACAGAAGCGAGCAGCCCGGAAAAGCAGCTGAGAGACTTTCTTAAGTATAAAAAG
 AAAACAATCGATTTAAAGCCAGACCCATTCTCGATCTACTTATGGTTCAACTACCAATGACAAGTTAA
 AAGAAGAAGAGCTCTATCGAAACCTTAGGACACAGCTGAGAGCCAGGAGCATTTACAGAAGCTCATCTCC
 TCTGCCTTGTAGTTCAGCTTGTGGATGCAGGAACCCAGGTGCCTGAACAGGCTGTAAAGTTGAAGTGT
 AAACACAAGGTTAGGTGCCCAACTCCTGATTTTGGAGACCTTCTGAGAGATACCAGAAACCTCTCAG
 AACACAAGTCTCCAAAACCTTAAACAGTGTGTAACCATTGATCTTCATGCATCTCCACATGCATCTAT
 TAAAAGAGAAAAATTTTGGCAGACATCGAAGCAGATGAAGAAAAATTTAAAAGAAACACGTTGGCCTTAT
 TTGTCTCCAAGGCGTAAGTACCAGTAAGATGTGCAGGTGTAACCCTGTGCCTTGTAACTGCAACCCTC
 CCGTGCCACGGTATCTCCAGAGGACGAGAACAAGCCGTAAGGAGATCACTTGAGGAAAAGAAAATGTT
 GGAAGAAGAGAGAAATCGGATCCTAACTAAACAGAAGCAAGAATGAAAGAATTGCAGAACTCCTGACA
 ACCCGGGCTAAGGCTTATGACTCACATCAAAGTTAGCTCAAATATCTAAATCCAGAGTAAATGTCTCA
 GAAAGAGCGAAAAGGAAAGGATGAGAGAATACCAACGAGAAGTAGAAGAAAGAGAAAATTAATAAAA
 GAGGCCACTGCTATTTGAAAGAGTTGCTCAGAAAAATGCAAGAATGGCAGCAGAAAAGCATTATTCTAAT
 ACCCTAAAAGCACTAGGAATATCTGATGAGTTTGTTCAAAGAAAAGGCCAAAAGTGGAAAAGTACTTGAGT
 ACTTCAACAATCAAGAGACGAAAAGTGTCACTGAAGACAAAAGAAAGCTTTAATGAAGAAGAAAAATAGA
 AGAAAGAGAGAATGGGGAAGAAAATTTTTATTGATACCAACAGCCAGGATTCTTACAAGGAAAAAGAT
 GAAGCCAATGAGGAAAGTGAAGAAGAGAAATCTGTTGAAGAATCACAC

ACGCGTACGCGGCCGCTCGAG - GFP Tag - GTTTAA

Protein Sequence: >RG234767 representing NM_001201543
 Red=Cloning site Green=Tags(s)

MATSHRVAKLVASSLQTPVNPITGARVAQYEREDPLKALAAAEAILDEEEEEKVAQPAGASADLNTSFSG
 VDEHAPISYEDFVNFPDIHHSNEEYFKKVEELKAAHIETMAKLEKMYQDKLHLKEVQPVVIREDSLSDSS
 RSVSEKNSYHPVSLMTSFSSEDLGQSSSLYVSSSEELPNLEKEYPRKNRMMTYAKELINNMTDFCVED
 YIRCKDTGFHAAEKRRKRKEWVPTITVPEPFQMMIREQKKKEESMKSKSDIEMVHKALKKQEEDPEYKK
 KFRANPVPASVFLPLYHDLVKQKEERRRSLKEKSKEALLASQKPFKFIAREEQKRAAREKQLRDFLKYKK
 KTNRFKARPIPRSTYGSTTNDKLEEEELYRNLRTQLRAQEHLQNSSPLPCRSACGCRNPRCEQAVKLLC
 KHKVRCPTPDFEDLPERYQKHLSEHKSPKLLTVCKPFDLHASPHASIKREKILADIEADEENLKETRWPY
 LSPRRKSPVRCAGVNPVPCNPNPPVPTVSSRGREQAVRRSLEEKMLEEERNRILTKQKQRMKELQKLLT
 TRAKAYDSHQSLAQISKSRVKCLRKSEKERMREYQRELEEREKLLKRPPLLFERVAQKNARMAAEKHYSN
 TLKALGISDEFVSKKGQSGKVLEYFNNQETKSVTEDKESFNEEEKIEERENGEENYFIDTNSQDSYKEK
 EANESEEEKSVVEESH

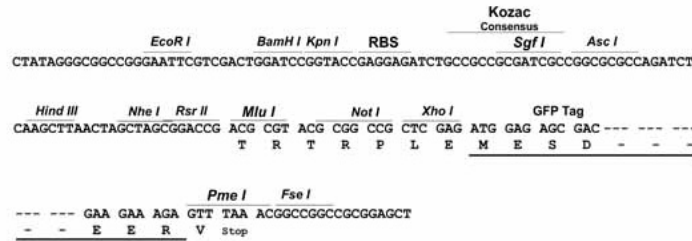
TRTRPLE - GFP Tag - V

Restriction Sites:

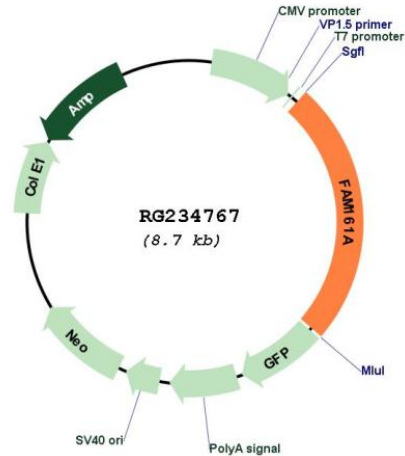
SgfI-MluI

Cloning Scheme:

Cloning sites used for ORF Shutting:



Plasmid Map:



ACCN: NM_001201543

ORF Size: 2148 bp

OTI Disclaimer: The molecular sequence of this clone aligns with the gene accession number as a point of reference only. However, individual transcript sequences of the same gene can differ through naturally occurring variations (e.g. polymorphisms), each with its own valid existence. This clone is substantially in agreement with the reference, but a complete review of all prevailing variants is recommended prior to use. [More info](#)

OTI Annotation: This clone was engineered to express the complete ORF with an expression tag. Expression varies depending on the nature of the gene.

Components: The ORF clone is ion-exchange column purified and shipped in a 2D barcoded Matrix tube containing 10ug of transfection-ready, dried plasmid DNA (reconstitute with 100 ul of water).

Reconstitution Method:

1. Centrifuge at 5,000xg for 5min.
2. Carefully open the tube and add 100ul of sterile water to dissolve the DNA.
3. Close the tube and incubate for 10 minutes at room temperature.
4. Briefly vortex the tube and then do a quick spin (less than 5000xg) to concentrate the liquid at the bottom.
5. Store the suspended plasmid at -20°C. The DNA is stable for at least one year from date of shipping when stored at -20°C.

RefSeq: [NM_001201543.1](#), [NP_001188472.1](#)

RefSeq Size: 3871 bp

RefSeq ORF: 2151 bp

Locus ID: 84140

UniProt ID: [Q3B820](#)

Cytogenetics: 2p15

Gene Summary: This gene belongs to the FAM161 family. It is expressed mainly in the retina. Mouse studies suggested that this gene is involved in development of retinal progenitors during embryogenesis, and that its activity is restricted to mature photoreceptors after birth. Mutations in this gene cause autosomal recessive retinitis pigmentosa-28. Alternatively spliced transcript variants have been identified.[provided by RefSeq, Jan 2011]