

Product datasheet for **RG234763**

HSP90AB1 (NM_001271972) Human Tagged ORF Clone

Product data:

Product Type:	Expression Plasmids
Product Name:	HSP90AB1 (NM_001271972) Human Tagged ORF Clone
Tag:	TurboGFP
Symbol:	HSP90AB1
Synonyms:	D6S182; HSP84; HSP90B; HSPC2; HSPCB
Mammalian Cell Selection:	Neomycin
Vector:	pCMV6-AC-GFP (PS100010)
E. coli Selection:	Ampicillin (100 ug/mL)



[View online »](#)

ORF Nucleotide Sequence:

>RG234763 representing NM_001271972
 Red=Cloning site Blue=ORF Green=Tags(s)

TTTTGTAATACGACTCACTATAGGGCGGCCGGGAATTCGTCGACTGGATCCGGTACCGAGGAGATCTGCC
 GCC**CGGATCGCC**

ATGCCTGAGGAAGTGCACCATGGAGAGGAGGAGGTGGAGACTTTTGCCTTCAGGCAGAAATTGCCAAC
 TCATGTCCCTCATCATCAATACCTTCTATTCCAACAAGGAGATTTTCTTCGGGAGTTGATCTCTAATGC
 TTCTGATGCCTTGACAAGATTGCTATGAGAGCCTGACAGACCCCTCGAAGTTGGACAGTGGTAAAGAG
 CTGAAAATTGACATCATCCCAACCCTCAGGAACGTACCCTGACTTTGGTAGACACAGGCATTGGCATGA
 CCAAAGCTGATCTCATAAATAATTTGGGAACCATTGCCAAGTCTGGTACTAAAGCATTATGGAGGCTCT
 TCAGTTTGGTGTGGCTTTTATTCTGCCTACTTGGTGGCAGAGAAAGTGGTTGTGATCACAAAGCACAAC
 GATGATGAACAGTATGCTTGGGAGTCTTCTGCTGGAGGTTCCCTCACTGTGCGTGTGACCATGGTGAAC
 CCATTGGCAGGGTACCAAAGTATCCTCCATCTTAAAGAAGATCAGACAGAGTACCTAGAAGAGAGGGC
 GGTCAAAGAAGTAGTGAAGAAGCATTCTCAGTTTATAGGCTATCCCATCACCTTTATTTGGAGAAGGAA
 CGAGAGAAGGAAATTAGTGATGATGAGGCAGAGGAAGAGAAAGGTGAGAAAGAAGAGGAAGATAAGATG
 ATGAAGAAAAACCAAGATCGAAGATGTGGGTTGAGATGAGGAGGATGACAGCGGTAAGGATAAGAGAA
 GAAAACCTAAGAAGATCAAAGAGAAATACATTGATCAGGAAGAATAACAAGACCAAGCCTATTTGGACC
 AGAAACCTGATGACATCACCAAGAGGAGTATGGAGAATTCTACAAGAGCCTCACTAATGACTGGGAAAG
 ACCACTTGGCAGTCAAGCACTTTTCTGTAGAAGGTCAGTTGGAATTCAGGGCATTGCTATTTATTCCTCG
 TCGGGCTCCCTTTGACCTTTTGGAGAACAAGAAGAAAAAGAACACATCAAACCTATGTCCGCCGTGTG
 TTCATCATGGACAGCTGTGATGAGTTGATACCAGAGTATCTCAATTTTATCCGTGGTGTGGTTGACTCTG
 AGGATCTGCCCTGAACATCTCCCGAGAAATGCTCCAGCAGAGCAAATCTTGAAAGTCATTGCAAAAA
 CATTGTTAAGAAGTGCCTTGAGCTCTTCTGAGCTGGCAGAAGACAAGGAGAATTACAAGAAATCTAT
 GAGGCATTCTCTAAAAATCTCAAGCTTGAATCCACGAAGACTCCACTAACCGCCGCCGCCTGTCTGAGC
 TGCTGCGTATCATACCTCCCAGTCTGGAGATGAGATGACATCTCTGTCAGAGTATGTTTCTCGCATGAA
 GGAGACACAGAAGTCCATCTATTACACTGCTGGAGAGCAAAGAGCAGGTGGCCAACTCAGCTTTTGTG
 GAGCGAGTGGGAAACGGGGCTTCGAGGTGGTATATGACCGAGCCATTGACGAGTACTGTGTGCAGC
 AGCTCAAGGAATTTGATGGGAAGAGCCTGGTCTCAGTTACCAAGGAGGGTCTGGAGCTGCCTGAGGATGA
 GGAGGAGAAGAAGATGGAAGAGAGCAAGGCAAAGTTGAGAACCTCTGCAAGCTCATGAAAGAAATC
 TTAGATAAGAAGTTGAGAAGGTGACAATCTCCAATAGACTTGTGTCTTACCTTGTGCTGATTGTGACCA
 GCACCTACGGCTGGACAGCCAATATGGAGCGGATCATGAAAGCCAGGCCTTCGGGACAACCTCCACCAT
 GGGCTATATGATGGCAAAAAGCACCTGGAGATCAACCCTGACCACCCATTGTGGAGACGCTGCGGCAG
 AAGGCTGAGGCCGACAAGAATGATAAGGCAGTTAAGGACCTGGTGGTGTGCTGTTTGAACCGCCCTGC
 TATCTTCTGGCTTTTCCCTTGAGGATCCCAGACCCACTCCAACCGCATCTATCGCATGATCAAGCTAGG
 TCTAGGTATTGATGAAGATGAAGTGGCAGCAGAGGAACCCAATGCTGCAGTTCCTGATGAGATCCCCCT
 CTCGAGGGCGATGAGGATGCGTCTCGCATGGAAGAAGTCGAT

ACGCGTACGCGGCCGCTCGAG - GFP Tag - GTTTAA

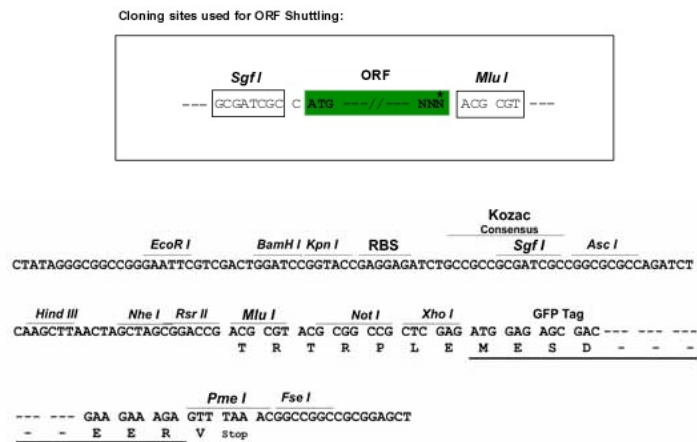
Protein Sequence: >RG234763 representing NM_001271972
 Red=Cloning site Green=Tags(s)

MPEEVHHGEEEVETFAFQAEIAQLMSLIINTFYSNKEIFLRELISNASDALDKIRYESLTDPSKLDSGKE
 LKIDIIIPNPQERTLTLVDTGIGMTKADLINNLTIAKSGTKAFMEALQFGVGFYSAYLVAEKVVVITKHN
 DDEQYAWESSAGGSFTVRADHGPEIGRGTKVILHLKEDQTEYLEERRVKEVVKHSQFIGYPITLYLEKE
 REKEISDDEAEEEEKGEKEEEDKDDEEKPKIEDVGSDEEDDSGDKKKKKKKIKEYIDQEELNKTPIWT
 RNPDDITQEEYGEFYKSLTNDWEDHLAVKHF SVEGQLEFRALLFIPRRAPFDLFENKKNKNNIKLYVRRV
 FIMDSCDELIPEYLNFIIRGVVDSEDLPLNISREMLQQSKILKVIRKNIYKKCLELFSLEAEDKENYKIFY
 EAFSKNLKLGIHEDSTNRRRLSELLRYHTSQSGDEMTSLSEYVSRMKETQKSIYYITGESKEQVANSFV
 ERVRKRGFEVVMTEPIDEYCVQQLKEFDGKSLVSVTKEGLELPEDEEEKKKMEESKAKFENLCKLMKEI
 LDKKVEKVTISNRLVSSPCCIVTSTYGWTANMERIMKAQALRDNSTMGYMAKKHLEINPDHPIVETLRQ
 KAEADKNDKAVKDLVLLFETALLSSGF SLEDPQTHSNRIYRMIKLGLGIDEVAAEENAAVPDEIPP
 LEGDEASRMEEVD

TRTRPLE - GFP Tag - V

Restriction Sites: SgfI-MluI

Cloning Scheme:



ACCN: NM_001271972

ORF Size: 2142 bp

OTI Disclaimer: The molecular sequence of this clone aligns with the gene accession number as a point of reference only. However, individual transcript sequences of the same gene can differ through naturally occurring variations (e.g. polymorphisms), each with its own valid existence. This clone is substantially in agreement with the reference, but a complete review of all prevailing variants is recommended prior to use. [More info](#)

OTI Annotation: This clone was engineered to express the complete ORF with an expression tag. Expression varies depending on the nature of the gene.

Components: The ORF clone is ion-exchange column purified and shipped in a 2D barcoded Matrix tube containing 10ug of transfection-ready, dried plasmid DNA (reconstitute with 100 ul of water).

Reconstitution Method:

1. Centrifuge at 5,000xg for 5min.
2. Carefully open the tube and add 100ul of sterile water to dissolve the DNA.
3. Close the tube and incubate for 10 minutes at room temperature.
4. Briefly vortex the tube and then do a quick spin (less than 5000xg) to concentrate the liquid at the bottom.
5. Store the suspended plasmid at -20°C. The DNA is stable for at least one year from date of shipping when stored at -20°C.

RefSeq: [NM_001271972.1](#), [NP_001258901.1](#)

RefSeq Size: 2673 bp

RefSeq ORF: 2145 bp

Locus ID: 3326

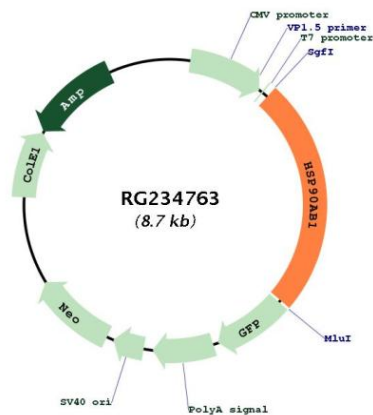
Cytogenetics: 6p21.1

Protein Families: Druggable Genome, Stem cell - Pluripotency

Protein Pathways: Antigen processing and presentation, NOD-like receptor signaling pathway, Pathways in cancer, Progesterone-mediated oocyte maturation, Prostate cancer

Gene Summary: This gene encodes a member of the heat shock protein 90 family; these proteins are involved in signal transduction, protein folding and degradation and morphological evolution. This gene encodes the constitutive form of the cytosolic 90 kDa heat-shock protein and is thought to play a role in gastric apoptosis and inflammation. Alternative splicing results in multiple transcript variants. Pseudogenes have been identified on multiple chromosomes. [provided by RefSeq, Dec 2012]

Product images:



Circular map for RG234763