

Product datasheet for **RG234762**

ARHGAP22 (NM_001256024) Human Tagged ORF Clone

Product data:

Product Type:	Expression Plasmids
Product Name:	ARHGAP22 (NM_001256024) Human Tagged ORF Clone
Tag:	TurboGFP
Symbol:	ARHGAP22
Synonyms:	RhoGAP2; RhoGap22
Mammalian Cell Selection:	Neomycin
Vector:	pCMV6-AC-GFP (PS100010)
E. coli Selection:	Ampicillin (100 ug/mL)



[View online »](#)

ORF Nucleotide
Sequence:

>RG234762 representing NM_001256024
Red=Cloning site Blue=ORF Green=Tags(s)

TTTTGTAATACGACTCACTATAGGGCGGCCGGAATTCGTCGACTGGATCCGGTACCGAGGAGATCTGCC
GCC**CGGATCGCC**

ATGCTGAGCCAAAGATCAGGCAGGCCAGGAGGCCCGCTCCAAAAGCCTAGTGATGGGGGAGCAGAGCC
GGAGCCCTGGGCGGATGCCGTGCCCTCACAGGCTGGGCCCGTGCTGAAGGCGGGCTGGCTGAAGAAGCA
GAGGAGCATCATGAAGAACTGGCAGCAGCGCTGGTTTGTGCTGCGTGGGGATCAGCTTTTCTACTACAAG
GACAAAGATGAGATCAAGCCCCAGGGATTTATTTCTCTACAAGGGACACAGGTGACTGAACCTCCTCCTG
GCCCGAGGACCCAGGGAAGCACCTCTTTGAGATCAGCCAGGTGGTCCCGGGGAGCGGGAGAAGGTGCC
GGCCAACCCGAGGCGCTCCTGCTCATGGCCAGCTCCAGCGTGACATGGAGGACTGGGTGCAGGCCATC
CGCCGAGTCATCTGGGCCCGCTGGGCGGAGGTACTGCCCGTAGATCGCATGCCACCCTCTAGAACCCT
TGCCCTCAGGGATCTTTGGGCAGCGCTAGAGGAAACAGTCCACCACGAGCGGAAGTATGGCCCCGCT
GGCGCCCTGCTGGTGGAGCAGTGTGTGACTTCCATCCGGGAGCGCGGGCTCACTGAGGAGGGCTGTT
CGCATGCCAGGCCAGGCCAACCTGGTGAGGGACCTGCAGGATTCCTTCGACTGTGGGGAGAAGCCACTGT
TTGACAGCACAACAGACGTGCACACGGTGGCCTCCCTGCTGAAGCTGTACCTGCGGGAGCTCCCCGAGCC
CGTGGTCCCTTCGCCAGGTACGAGGACTTCTCAGCTGCGCCAGCTGCTCACCAGGACGAGGGGGAG
GGCACTCTGGAGTTGGCTAAACAAGTGAGCAACCTTCTCAGGCAAATTAACAACCTGCTCAGATACATCT
GCAAGTTTCTGGATGAAGTTCAGGCATACTCAAATGTCAACAAGATGAGTGTCCAGAATCTGGCAACCGT
TTTTGGACCTAACATTCTGCGGCCACAGGTAGAGGACCCAGTAACCATCATGGAAGGCACCTCCCTCGTC
CAGCACCTGATGACCGTCTCATCCGCAACACAGCCAGCTCTTACGGCACCCGGTCCCGGAAGGGCCCA
CCTCCCCGCGCGGGGGCCTGCAATGCGCAGTGGGGTGGGGTCCGAGGAGGTACCAGGGACAGCCAAGG
AGAGCCCGCGGGCCCGGCTGCCCGCGCACAGGACCTTCCCTGGACGGGGCGGCCGTGGCGGTGCTC
TCCAGAACAGCCCCACGGGGCCGGGAGCCGGTGCAGCCCTGGGAAGAAGGTGCAGACCCTGCCAGTT
GGAAGTCTCCTTCGGCAGCCGAGGTCCCTATCGGGAAGCCGAAGGGGGCGGCTCATCCCTGGAGGT
GCCCATCATCTCCTCCGGCGGAACTGGCTTATGAACGGGCTGTCTCCTGCGCGGACACCGCGGGCC
TCGTCCGGAGACCGGCTCAAGGACTCGGGTCCGTGCAGAGACTCTCCACCTACGACAATGTGCCCGCGC
CGGGCCTGGTCCCGGCATACCCAGCGTGGCCAGTATGGCGTGGTCCGGGGCCTCGTCCAGCGAGTCGTC
GGTGGGGGCTCACTCAGCAGCTGCACGGCCTGCCGCGCCAGCGACTCGTCTGCCCGAGTTCCTGCAC
ACCGACTGGGCCCTGGAGCCCTCCCGCTCCCCAGCAGCAGCGAGGACCCCAAGTCCCTGGACCTGGACC
ACAGCATGGACGAGGCGGGCGGGTGCAGCAACAGCGAGCCAGCGAGCCGGACAGCCCCACCCGGGA
ACACGCGCGCCGCTCCGAGGCCCTACAGGGGCTGGTCACTGAGCTCAGGGCCGAGCTGTGCCGCCAGCGG
ACTGAGTACGAGAGGAGTGTGAAAAGAATCGAAGAAGGGAGTGTGACCTGAGAAAACGAATGTCCCGGT
TAGAAGAAGAAGTGGACCAGGAAAAGAAAAATACATCATGCTGGAAATAAAGCTGCGGAACTCTGAACG
GGCGCGGAGGATGCGGAGAGGAGGAACCAGCTGTTGCAGAGGAAATGGAGGAGTTTTTTTCGACCCTA
GGAAGCTTGACTGTTGGGGCAAAGGTGCCAGGGCCCCAAAG

ACGCGTACGCGGCCGCTCGAG - GFP Tag - GTTTAA

Protein Sequence: >RG234762 representing NM_001256024

Red=Cloning site Green=Tags(s)

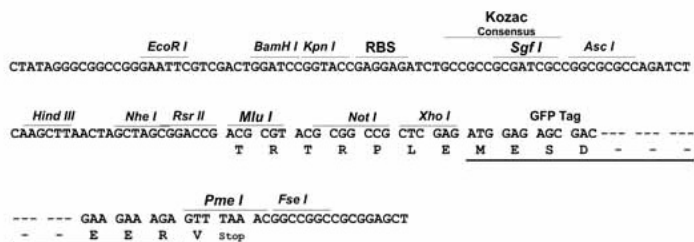
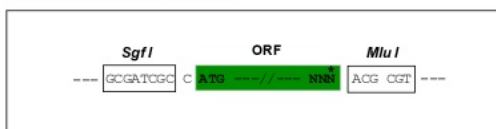
MLSPKIRQARRARSKSLVMGEQSRSPGRMPCPHRLGPVLKAGWLKKQRSIMKNWQQRWFVLRGDQLFYK
 DKDEIKPQGFISLQGTQVTELPPEPDPGKHLFEISPGGAGEREKVPANPEALLMASSQRDMEDWVQAI
 RRVIWAPLGGGTARRSHAHPLEPLPPGIFGQRLEETVHHERKYGPRLAPLLVEQCVDFIRERGLTEEGLF
 RMPGQANLVLDLQDSFDCGEKPLFDSTTDVHTVASLLKLYLRELPEPVVFPARYEDFLSQAQLLTKDEGE
 GTLELAKQVSNLPQANYNLLRYICKFLDEVQAYSNNVNMVSVQNLATVFGPNILRPQVEDPVTIMEGTSLV
 QHLMTVLIRKHSQLFTAPVPEGPTSPRGLQCAVGVGSEEVTRDSQGEPPGGLPAHRTSSLDGAAVAVL
 SRTAPTGPSRCSGKVKVQTLPSWKSSFRQPRSLSGSPKGGSSLEVPIISSGGNWMNGLSSLRGHRRRA
 SSGDRDKDSGSVQRLSTYDNVPAPGLVPGIPSVASMAWSGASSSESSVGGSLSSCTACRASDSSARSSLH
 TDWALEPSPLPSSSEDPKSLDLHSMDEAGAGASNSEPSPTREHARRSEALQGLVTELRAELCRQR
 TEYERSVKRIEESADLRKMSRLEEELDQEKKKYIMLEIKLRNSERAREDAERRNQLLQREMEEFFSTL
 GSLTVGAKGARAPK

TRTRPLE - GFP Tag - V

Restriction Sites: SgfI-MluI

Cloning Scheme:

Cloning sites used for ORF Shuttling:



ACCN: NM_001256024

ORF Size: 2142 bp

OTI Disclaimer: The molecular sequence of this clone aligns with the gene accession number as a point of reference only. However, individual transcript sequences of the same gene can differ through naturally occurring variations (e.g. polymorphisms), each with its own valid existence. This clone is substantially in agreement with the reference, but a complete review of all prevailing variants is recommended prior to use. [More info](#)

OTI Annotation: This clone was engineered to express the complete ORF with an expression tag. Expression varies depending on the nature of the gene.

Components: The ORF clone is ion-exchange column purified and shipped in a 2D barcoded Matrix tube containing 10ug of transfection-ready, dried plasmid DNA (reconstitute with 100 ul of water).

Reconstitution Method:

1. Centrifuge at 5,000xg for 5min.
2. Carefully open the tube and add 100ul of sterile water to dissolve the DNA.
3. Close the tube and incubate for 10 minutes at room temperature.
4. Briefly vortex the tube and then do a quick spin (less than 5000xg) to concentrate the liquid at the bottom.
5. Store the suspended plasmid at -20°C. The DNA is stable for at least one year from date of shipping when stored at -20°C.

RefSeq: [NM_001256024.2](#)

RefSeq Size: 2846 bp

RefSeq ORF: 2145 bp

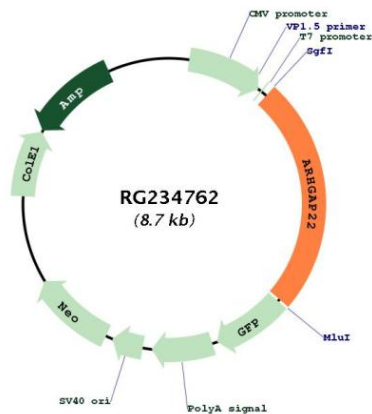
Locus ID: 58504

UniProt ID: [Q7Z5H3](#)

Cytogenetics: 10q11.22-q11.23

Gene Summary: This gene encodes a member of the GTPase activating protein family which activates a GTPase belonging to the RAS superfamily of small GTP-binding proteins. The encoded protein is insulin-responsive, is dependent on the kinase Akt and requires the Akt-dependent 14-3-3 binding protein which binds sequentially to two serine residues. The result of these interactions is regulation of cell motility. Multiple transcript variants encoding different isoforms have been found for this gene. [provided by RefSeq, Dec 2011]

Product images:



Circular map for RG234762