

Product datasheet for **RG234744**

Cullin 3 (CUL3) (NM_001257197) Human Tagged ORF Clone

Product data:

Product Type:	Expression Plasmids
Product Name:	Cullin 3 (CUL3) (NM_001257197) Human Tagged ORF Clone
Tag:	TurboGFP
Symbol:	Cullin 3
Synonyms:	CUL-3; NEDAUS; PHA2E
Mammalian Cell Selection:	Neomycin
Vector:	pCMV6-AC-GFP (PS100010)
E. coli Selection:	Ampicillin (100 ug/mL)



[View online »](#)

ORF Nucleotide Sequence:

>RG234744 representing NM_001257197
 Red=Cloning site Blue=ORF Green=Tags(s)

TTTTGTAATACGACTCACTATAGGGCGGCCGGAATTCGTCGACTGGATCCGGTACCGAGGAGATCTGCC
 GCC**CGGATCGCC**

ATGTCGAATCTGAGCAAAGGCACGGGCAGCCGGAAGGACACCAAGATGCGGATCCGGCCTTTCCGGTGC
 GAGAAGATGTAATAAATTCATTGAATAACAACCTTTCTTCAAACGCTAAATCAAGCTTGGAAATGATCATCA
 AACAGCTATGGTATGATTAGAGACATACTAATGTACATGGACCGTGTGTATGTACAACAAAATAATGTG
 GAGAACGCTACAATTTGGGATTAATATTTTTCGAGATCAAGTTGTACGTTATGGGTGATTAGGGATC
 ATCTACGGCAAACCTATTGGATATGATTGCAAGAGAGCGGAAAGGAGAAGTCGTAGACAGAGGCCGAAT
 AAGAAATGCTTGCAGATGTTAATGATTTTAGGTCTCGAAGGAAGATCAGTCTATGAAGAAGATTTTGGAG
 GCTCCTTTTTGGAAATGTCTGCAGAATTTTTTCAGATGGAAAGCCAGAAATTTTAGCAGAAAAATAGT
 CTTAGTATATAAAGAAAGTAGAAGCTAGAATTAATGAAGAAATAGAACGAGTATGACTGCCTTGA
 CAAATCAACGGAAGAACCAATTGTAAGGTGGTTGAAAGGGAACCTATTTCCAAGCATGAAGACTATA
 GTAGAAATGGAGAATTCGGGCTAGTACATATGTTGAAAAATGGAAAGACAGAAGACCTTGGTTGCATGT
 ACAAGTTATTTAGTCGTGTGCCAATGGTTGAAAAACAATGTGTGAGTGTATGAGTTCCTATTTGAGGGA
 GCAAGGTAAGACTCTTGTCTGGAAGAGGAGAAGGAAAGAAATCCTGTTGACTATATCCAGGGCTTATTG
 GATCTGAAGAGTAGGTTGATCGCTTCTCCTGGAATCATTCAACAATGACCGTCTCTTTAAACAACTA
 TTGCGGGTGACTTTGAGTATTTCTCAACCTCACTCCAGGTCTCCTGAATACCTCTCATTATTTATTGA
 TGATAAGCTGAAAAGGGAGTCAAAGGGCTAACAGAACAAGAAGTAGAACAATATTGGATAAAGCAATG
 GTCCTTTTTAGGTTTATGCAAGAAAAAGATGATTTGAACGTTATTATAAACAACACTTGGCAAGGAGAC
 TTCTCACAATAAAAAGTGTCTGATGACTCTGAAAAAACATGATATCTAAGTTAAAGACTGAATGTGG
 ATGTCAGTTCACGTCAAAACCTGGAAGGAATGTTTAGGGATATGAGCATCTCAAACACAACGATGGATGAA
 TTCAGGCAACATCTACAGGCAACTGGTGTATCTTTAGGTGGTGTGATCTTACAGTCCGGGTGCTCACGA
 CAGGATATTGGCCCACTCAGTCAGCCACACCAAAGTGCAACATCCACCAGCACCACCAAGACATGCTTTTGA
 GATATTCAGAAGTTCTACTTAGCCAAACACAGTGGTCGACAGCTCACACTCCAGCATCATATGGTTCT
 GCAGATCTCAATGCCACATTTTATGGACCAGTTAAAAAGGAAGATGGATCTGAAGTTGGTGTGGAGGTG
 CACAAGTAACTGGCTCTAATACACGGAAGCACATATTGCAAGTTCCACTTTCCAGATGACCATATTAAT
 GCTCTTTAATAATAGAGAAAAATACACATTTGAGGAAATTCAGCAAGAGACAGATATCCCTGAAAGAGAG
 CTTGTTAGAGCCCTACAGTCCCTCGCCTGTGGTAAACCAACACAGCGGGTCTTACAAAAGAACCCAAAT
 CAAAGGAAATAGAAAATGGTCATATATTTACAGTTAATGATCAATTCACATCCAAACTACACAGAGTCAA
 GATTCAAACAGTTGCTGCCAAACAAGGTGAATCCGACCCAGAGAGGAAAGAAACAAGGCAGAAAAGTAGAC
 GACGACAGAAAACATGAGATAGAAGCTGTATAGTGC GGATAATGAAATCTAGAAAAGAGATGCAGCACA
 ATGTTCTAGTAGCGGAGGTAACCTCAGCAGTTGAAGGCGCGATTCTTACCAAGTCCAGTTGTTATTAAGAA
 ACGTATTGAAGGACTTATTGAGAGAGAATTTGGCACGAACACCTGAGGATCGCAAAGTATACACATAT
 GTAGCA

ACGCGTACGCGGCCGCTCGAG – GFP Tag – GTTTAA

Protein Sequence: >RG234744 representing NM_001257197
 Red=Cloning site Green=Tags(s)

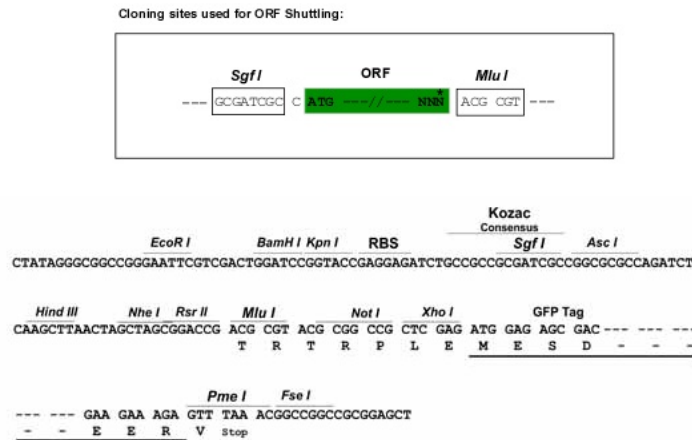
```

MSNL SKGTGSRKDTKMRIRAFPVREDVLNSLNNNFLQTLNQAWNDHQTAMVMIRDILMYMDRVVYQNNV
ENVYNLGLIIFRDQVVRYGCI RDHLRQTLLDMIARERKGEVVDRAIRNACQMLMILGLEGRSVYEEDFE
APFLEMSAEFFQMESQKFLAENSASVYIKKVEARINEEIERVMHCLDKSTEEPIVKVVERELISKHMKTI
VEMENSGLVHMLKNGKTEDLGCMYKLF SRVPNGLKTMCECMSSYLREQKALVSEEGEGKNPVDYIQGLL
DLKSRFDRFLLESFNDRFLFKQTIAGDFEYFLNLSRSPEYLSLFI DDKLLKKGVKGLTEQEVETILDKAM
VLF RFMQEKDVFERYYKQHLARRLLTNKSVSDDSEKNMISKLKTECGCQFTSKLEGMFRDMSISNTTMD
FRQHLQATGVSLGGVDLTVRVLTTGYWPTQSATPKCNIPPAPRHA FEIFRRFYLAKHSGRQLTLQHHMGS
ADLNATFYGPVKKEDGSEVGVGGAQVTSNTRKHILQVSTFQMTILMLFNNREKYTFEEIQQETDIPERE
LVRALQSLACGKPTQRVLTKEPKSKEIENGHIFTVNDQFTSKLHRVKIQTVA AKQGESDPERKETRQKVD
DDRKHEIEAAIVRIMKSRKKMQHNVLVAEVTQQLKARFLPSPVVIKKRIEGLIEREYLARTPEDRKVYTY
VA
  
```

TRTRPLE - GFP Tag - V

Restriction Sites: SgfI-MluI

Cloning Scheme:



ACCN: NM_001257197

ORF Size: 2106 bp

OTI Disclaimer: The molecular sequence of this clone aligns with the gene accession number as a point of reference only. However, individual transcript sequences of the same gene can differ through naturally occurring variations (e.g. polymorphisms), each with its own valid existence. This clone is substantially in agreement with the reference, but a complete review of all prevailing variants is recommended prior to use. [More info](#)

OTI Annotation: This clone was engineered to express the complete ORF with an expression tag. Expression varies depending on the nature of the gene.

Components: The ORF clone is ion-exchange column purified and shipped in a 2D barcoded Matrix tube containing 10ug of transfection-ready, dried plasmid DNA (reconstitute with 100 ul of water).

Reconstitution Method:

1. Centrifuge at 5,000xg for 5min.
2. Carefully open the tube and add 100ul of sterile water to dissolve the DNA.
3. Close the tube and incubate for 10 minutes at room temperature.
4. Briefly vortex the tube and then do a quick spin (less than 5000xg) to concentrate the liquid at the bottom.
5. Store the suspended plasmid at -20°C. The DNA is stable for at least one year from date of shipping when stored at -20°C.

RefSeq: [NM_001257197.1](#), [NP_001244126.1](#)

RefSeq Size: 6592 bp

RefSeq ORF: 2109 bp

Locus ID: 8452

UniProt ID: [Q13618](#)

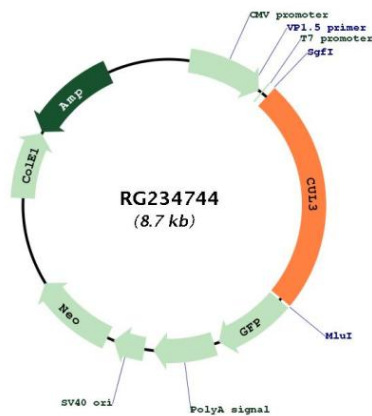
Cytogenetics: 2q36.2

Protein Families: Druggable Genome

Protein Pathways: Ubiquitin mediated proteolysis

Gene Summary: This gene encodes a member of the cullin protein family. The encoded protein plays a critical role in the polyubiquitination and subsequent degradation of specific protein substrates as the core component and scaffold protein of an E3 ubiquitin ligase complex. Complexes including the encoded protein may also play a role in late endosome maturation. Mutations in this gene are a cause of type 2E pseudohypoaldosteronism. Alternatively spliced transcript variants encoding multiple isoforms have been observed for this gene. [provided by RefSeq, Mar 2012]

Product images:



Circular map for RG234744