

Product datasheet for **RG234737**

TBC1D23 (NM_001199198) Human Tagged ORF Clone

Product data:

Product Type:	Expression Plasmids
Product Name:	TBC1D23 (NM_001199198) Human Tagged ORF Clone
Tag:	TurboGFP
Symbol:	TBC1D23
Synonyms:	NS4ATP1; PCH11
Mammalian Cell Selection:	Neomycin
Vector:	pCMV6-AC-GFP (PS100010)
E. coli Selection:	Ampicillin (100 ug/mL)



[View online »](#)

ORF Nucleotide Sequence:

>RG234737 representing NM_001199198
 Red=Cloning site Blue=ORF Green=Tags(s)

TTTTGTAATACGACTCACTATAGGGCGGCCGGAATTCGTCGACTGGATCCGGTACCGAGGAGATCTGCC
 GCC**CGGATCGCC**

ATGGCGGAAGGAGAAGATGTGCCCGCTGCCAACGTCGAGCGGCGACGGCTGGGAAAAAGATCTTGAAG
 AAGCTCTGGAAGCAGGAGGTTGTGATCTTGAAACGTTGAGAAATAAATTC AAGGAAGACCGCTGCCTGC
 TGATCTGAGGGCCAAAGTTTGAAGATTGCTCTGAATGTTGCAGGAAAAGGTGATAGTTTGGCATCATGG
 GATGGTATTTTAGACTTGCCAGAACAGAACTATTACAAAAGATTGCCTGCAGTTTATTGACCAGCTTT
 CAGTGCCAGAGGAGAAGGCAGCAGAATTACTTTGGATATTGAATCTGTAATTACCTTTTATTGAAATC
 ACGTAACATTAATATAGCACATCCCTTAGCTGGATACATCTACTGAAACCATTGGTGCATCTTCAACTG
 CCACGCAGCGATTTATACAACCTGCTTTATGCCATAATGAATAAGTACATTCCCAGGGATTGTTCCGAGA
 AAGGGAGACCATTTCATCTCTCAGGTTGCTCATCCAATACCATGAGCCTGAGCTTTGTTCTTATCTTGA
 TACAAAGAAAATTACTCCAGACTCTATGCACTCAACTGGCTTGGAAAGTCTTTTTGCATGTTACTGTTCC
 ACTGAAGTCACTCAGGCAATATGGGATGGATATCTACAACAAGCAGATCCATTTTTTATTTATTTCTTAA
 TGTTAATTATCCTTGTTAATGCAAAAAGAAGTTATTTTAAACACAAGAGTCAGACAGCAAAGAAGAAGTTAT
 CAAGTTCTTGAAAACTCCATCCAGTCTGAATATAGAAGATATAGAAGACCTTTTCTCTCTGGCTCAG
 TATTATTGCAGCAAAACACCGGCTTCTTTAGGAAGGATAATCACCATCTCTTTGGTAGTACTTTGTTGG
 GAATTAAGGATGATGATGCAGATCTGAGTCAGGCTCTTTGTCTGGCCATCTCCGTGCAGAGATCCTTCA
 AGCGAATCAGCTACAAGGGGAAGGAGTCCGTTCTTTGTGGTGGATTGCCGTCTGCAGAACAAATAAT
 GCTGGGCATTTATCAACTGCTTTCCACTTAGATTAGACCTGATGCTTCCAGATCCATCTGAGTTGCAC
 AGTCAGTAAAATCCTTGCTGGAAGCACAGAAGCAGTCCATTGAGTCTGGCTCCATAGCTGGTGGGAGCA
 CCTCTGTTTTATGGGCAGTGGCAGGGAGGAAGAAGACATGTATATGAACATGGTCTCCGACACTTTTTTA
 CAGAAAAACAAGAATATGTGAGTATTGCCAGTGGAGGATTTATGGCACTGCAGCAGCACCTGGCAGACA
 TTAATGTGGATGGACCAGAAAAATGGATATGGCCATTGGATTGCTAGTACCTCAGGCTCAAGGAGCAGTAT
 CAATTCTGTTGATGGTGAATCTCCTAATGGCTCAAGTATAGAGGAATGAAATCACTAGTAAATAAAATG
 ACTGTGGCTTTGAAGACAAAATCCGTTAATGTCAGGGAAAAAGTTATCAGTTTTATAGAGAATACATCAA
 CTCCTGTGGATCGAATGTCTTTCAATCTCCTTGGCCAGACAGATCATGTACAGAGCGGCATGTGAGCAG
 CAGTGACAGAGTGGCAAGCCTTACCGTGGCGTAAAGCCTGTTTTCAGCATTGGGGATGAAGAAGAATAC
 GACACAGATGAAATTGACAGTTCTTCAATGTCAGATGATGATAGAAAAGAGGTTGTAACATTTCAGACTT
 GGATAAACAAACCAGATGTCAAACATCATTTTCCTTGTAAAGAAGTAAAAGAAAGTGGACACATGTTTCC
 CAGTCATCTGTTGTTACTGCAACACATATGACTGTTTAAAGGGAGATTGTTTCACGGAAAGGATTGGCT
 TATATACAGTCTCGACAAGCGCTGAATTCTGTAGTTAAAATTACATCCAAAAAAAACATCCTGAACTCA
 TTACCTTCAAGTATGAAATAGCAGTGTCTCAGGAATAGAAAATCTTGGCAATCGAAAGGTATTTGATTCC
 AAATGCAGGGGATGCAACTAAAGCCATAAAACAGCAGATCATGAAAGTTTTGGATGCTTTGGAAAGT

ACGCGTACGCGGCCGCTCGAG - GFP Tag - GTTTAA

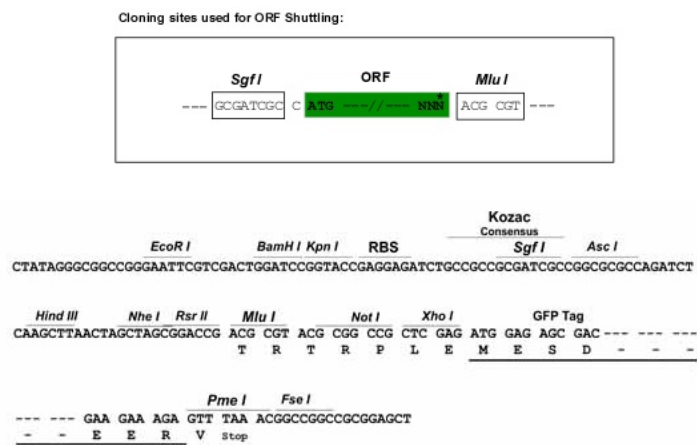
Protein Sequence: >RG234737 representing NM_001199198
 Red=Cloning site Green=Tags(s)

MAEGEDVPPLPTSSGDGWEKDLLEEAL EAGGCDLETLRNI IQGRPLPADLRAKVVWKIALNVAGKGD SLASW
 DGILDLPEQNTIHKDCLQFIDQLSVPEEKAAELLLDIESVITFYCKSRNIKYSTLSWIHLLKPLVHLQL
 PRSDLYNCFYAIMNKYIPRDCSQKGRPFHLFRLLIQYHEPELCSYLDTKKITPDSYALNWLGSLFACYCS
 TEVTQAIWDGYLQQADPFFIYFLMLIILVNAKEVILTQESDSKEEVIKFLENTPSSLNIEDIEDLFLSLAQ
 YYCSKTPASFRKDNHHLFGSTLLGKDDADLSQALCLAI SVSEILQANQLQGEVRFVVD CRPAEQYN
 AGHLSTAFHLDSDLMLQNPSEFAQSVKSLLEAQKQSIESGSIAGGEHL CFMGSGREEEDMYMNMVLAHFL
 QKNKEYVSIASGGFMALQQHLADINVDGPENGYGHWIASTSGSRSSINSVDGESPNGSSDRGMKSLVNMK
 TVALKTKSVNVREKVISFIENTSTPVDRMSFNL PWPDRSCTERHVSSSDRVGKPYRGV KPVFSIGDEEEY
 DTDEIDSSMSDDDRKEVVNIQTWINKPDVKHHPCKE VKESGHMFPSHLLVTATHMYCLREIVSRKGLA
 YIQSRQALNSVVKITSKKKHPELITFKYGNSSASGIEILAIERYLIPNAGDATKAIKQQIMKVLDALES

TRTRPLE - GFP Tag - V

Restriction Sites: SgfI-MluI

Cloning Scheme:



ACCN: NM_001199198

ORF Size: 2097 bp

OTI Disclaimer: The molecular sequence of this clone aligns with the gene accession number as a point of reference only. However, individual transcript sequences of the same gene can differ through naturally occurring variations (e.g. polymorphisms), each with its own valid existence. This clone is substantially in agreement with the reference, but a complete review of all prevailing variants is recommended prior to use. [More info](#)

OTI Annotation: This clone was engineered to express the complete ORF with an expression tag. Expression varies depending on the nature of the gene.

Components: The ORF clone is ion-exchange column purified and shipped in a 2D barcoded Matrix tube containing 10ug of transfection-ready, dried plasmid DNA (reconstitute with 100 ul of water).

Reconstitution Method:

1. Centrifuge at 5,000xg for 5min.
2. Carefully open the tube and add 100ul of sterile water to dissolve the DNA.
3. Close the tube and incubate for 10 minutes at room temperature.
4. Briefly vortex the tube and then do a quick spin (less than 5000xg) to concentrate the liquid at the bottom.
5. Store the suspended plasmid at -20°C. The DNA is stable for at least one year from date of shipping when stored at -20°C.

RefSeq: [NM_001199198.3](#)

RefSeq Size: 3886 bp

RefSeq ORF: 2100 bp

Locus ID: 55773

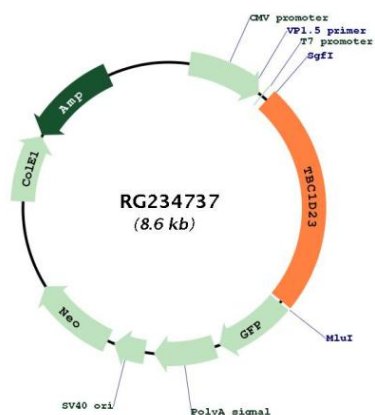
UniProt ID: [Q9NUY8](#)

Cytogenetics: 3q12.1-q12.2

Protein Families: Druggable Genome

Gene Summary: Putative Rab GTPase-activating protein which plays a role in vesicular trafficking (PubMed:28823707). Involved in endosome-to-Golgi trafficking. Acts as a bridging protein by binding simultaneously to golgins, including GOLGA1 and GOLGA4, located at the trans-Golgi, and to the WASH complex, located on endosome-derived vesicles (PubMed:29084197, PubMed:29426865). Together with WDR11 complex facilitates the golgin-mediated capture of vesicles generated using AP-1 (PubMed:29426865). Plays a role in brain development, including in cortical neuron positioning (By similarity). May also be important for neurite outgrowth, possibly through its involvement in membrane trafficking and cargo delivery, 2 processes that are essential for axonal and dendritic growth (By similarity). May act as a general inhibitor of innate immunity signaling, strongly inhibiting multiple TLR and dectin/CLEC7A-signaling pathways. Does not alter initial activation events, but instead affects maintenance of inflammatory gene expression several hours after bacterial lipopolysaccharide (LPS) challenge (By similarity).[UniProtKB/Swiss-Prot Function]

Product images:



Circular map for RG234737