

## Product datasheet for **RG234727**

### **ANKRD6 (NM\_001242813) Human Tagged ORF Clone**

#### **Product data:**

Product Type:	Expression Plasmids
Product Name:	ANKRD6 (NM_001242813) Human Tagged ORF Clone
Tag:	TurboGFP
Symbol:	ANKRD6
Mammalian Cell Selection:	Neomycin
Vector:	pCMV6-AC-GFP (PS100010)
E. coli Selection:	Ampicillin (100 ug/mL)



[View online »](#)

**ORF Nucleotide Sequence:**

>RG234727 representing NM\_001242813  
 Red=Cloning site Blue=ORF Green=Tags(s)

TTTTGTAATACGACTCACTATAGGGCGGCCGGGAATTCGTCGACTGGATCCGGTACCGAGGAGATCTGCC  
 GCC**CGGATCGCC**

ATGAGCCAGCAAGATGCGGTGCTGCACTTTCAGAGCGCCTTCTCGTAGCTGCGTACAAAGGCCAAACAG  
 AGAATGTGGTTTCAGCTCATCAACAAGGGCGCCAGGGTAGCGGTTACCAAGCATGGCCGGACTCCCTGCA  
 TCTTGCTGCCAATAAGGGCCATCTTCTGTGGTCCAGATCTTGCTGAAGGCTGGCTGCGACCTTGATGTC  
 CAGGATGATGGGGACCAGACCGCCTTGACCCGGCCACAGTGGTGGGAAACACGGAGATCATCGCGGCGC  
 TCATCCACGAAGGGTGTGCCCTGGACAGACAAGACAAGGATGGGAATACAGCCTTGATGAAGCATCCTG  
 GCATGGTTTCAGCCAGTCAGCCAAGCTGCTCATTAAAGCAGGAGCCAACGTGCTTGCCAAGAACAAGGCG  
 GGGAAACACAGCTCTGCACCTGGCCTGCCAGAACAGCCACTCCAGAGCACGCGCTCTCTGCTGGCCG  
 GGTCCCGCGCTGACCTCAAAAATAATGCAGGAGACACCTGTTTGCACGTTGCTGCGCGCTATAATCACTT  
 GTCATCATTAGGCTCCTCCTCACTGCTTCTGTTCTGTCCATGAAAAGAACCAGGCTGGAGACACAGCA  
 CTTACGTTGCTGCTGCCCTAAATCACAGAAGGTGGCCAAAATCTTACTGGAAGCCGGAGCAGATACGA  
 CCATTGTTAAACAATGCAGGCCAGACTCCGCTGGAGACTGCCCGCTACCACAATAACCCGGGAAGTTGCTCT  
 TCTCCTTACTAAAGCTCCCCAGGGCAGTGTCTCAGCAGGAGACACCCCCAGCAGTGAACAGGCTGTGGCC  
 AGAAAAGAAGAAGCCAGAGAAGGTTCTGTGACGCTCCCAGAACCCAGAGCAAAGGATGACAGGAGGA  
 GAAAGTCAAGGCCAAGGTGTCAGCATTTTCTGACCCACCCACCAGCCGACCAACAGCCTGGACACCA  
 GAAGAACCTGCATGCTCATAATCACCTAAAAAGAGGAACAGGCATCGGTGTTTATCCCCACCCCAACC  
 CATGAGTTCAGGGCGTATCAGCTCTACACATTGTACCGGGCAAGGATGGGAAAGTATGCAGGCACCAA  
 TAAATGGTTGTCGATGTGAACCTCTAATCAACAAGCTGGAGAATCAGTTGGAGGCTACTGTGGAGGAGAT  
 AAAAGCAGAGCTGGGATCGGTTTCAGGACAAAATGAATACAAAGCTGGGGCAGATGGAGAATAAGACCCAG  
 CACCAAATGCGTGTTTTGGACAAGCTGATGTTGAGCGACTTCTGCAGAGAGGACGGAGTGCCTGAACC  
 GCCTGCAACAGCACTCAGACACAGAGAAGCATGAGGGGGAGAAACGACAGATATCCTTGGTGGATGAATT  
 AAAAACCTGGTGCATGTTAAAGATTGAGAATCTGGAGCAGAAGCTTCTGGAGATTCTAGGGCCTGCAGA  
 GCTAAATCCACACCATCTACTTGTGAGTCTCTACAGGTGTGGACCAATTAGTGGTACTGCAGGTCCAG  
 CAGCAGCTCCGACAGCTCCCTCCAGTGGTAGGCCAAAGAGAAGGCCCTCAACTCCACTGCTACCCA  
 GAGACTCCAGCAGGAGCTGTCGTTCTGACTGTACAGGCTCCCGACTGAGAAACGTCAAGGTCCAGACA  
 GCCTTGCTACCCATGAATGAGGCAGCCAGATCTGATCAGCAGGCTGGGCCCTGCGTCAACAGAGGCACTC  
 AAATAAGAAGTCTGGGAAGAGTGGGCCAAAGGCATCGTGCCAGCAACCCGACCCAGCAGCAGCCTG  
 TGGGCAGCCGCCACCAGCCACAGGCAGCGAGCAGACTGGCCCTCATTGGGACACCTCCAAGCTCTG  
 GAGCTTACCCAGTATTTTTTTGAGGCTGTTTCTACCCAGATGGAAAAGTGGTATGAAAGGAAGATTGAAG  
 AAGCACGAAGCCAAGCCAATCAGAAAGCCAGCAAGATAAAGGCTACATTGAAGGAACACATTAAGGTTT  
 AGAAGAGGAACCTGCCAAACTAAGGACTAGGGTGCAGAAGGAAAAT

**ACGCGT**ACGCGGGCCGCTCGAG – GFP Tag – GTTTAA

**Protein Sequence:** >RG234727 representing NM\_001242813  
Red=Cloning site Green=Tags(s)

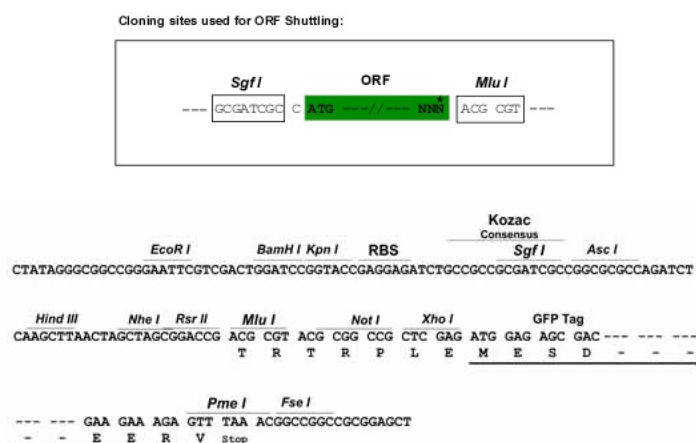
MSQQDAVAALSERLLVAAYKGQ TENVVQLINKGARVAVTKHGRTPLHLAANKGHL PVVQILLKAGCDLDV  
 QDDGDQ TALHRATVVGNTEIIAALIHEGCALDRQDKGNTALHEASWHGFSQSAKLLIKAGANVLAKNKA  
 GNTALHLACQNSHSQSTRVLLLAGSRADLKNAGDTCLHVAARYNHL SIIRLLL TAFCSVHEKNQAGDTA  
 LHVA AALNHKKVAKILLEAGADTTIVNNA GQTPLETARYHNNPEVALLLTKAPQGSVSAGDTPSSEQAVA  
 RKEEAREEFLSASPEPRAKDDRRRKS RPKVSAFSDPTPPADQQPGHQK NLAHNNHPKRRNRHRCSSPPPP  
 HEFRAYQLYTL YRGKDGKVMQAPINGCRCEPLINKLENQLEATV EEIKAELGSVQDKMNTKL GQMENKTQ  
 HQMRVLDKLMVERLSAERTECLNRLQQHSDTEKH EGEKRQISLVDELKTWCMLKIQNLEQKLSGDSRACR  
 AKSTPSTCESSTGVDQLVVTAGPAAASDSSPPVVRPKEKALNSTATQRLQQELSSDCTGSRLRNKVQT  
 ALLPMNEAARSDQQAGPCVNRGTQTKKSGKSGPTRHRAQQPAA SSTCGQPPPATGSEQTGPHIRDTSQAL  
 ELTQYFFEAVSTQMEK WYERKIEEARSQANQKAQQDKATLKEHIKSL EELAKLRTRVQKEN

TRTRPLE - GFP Tag - V

**Restriction Sites:**

SgfI-MluI

**Cloning Scheme:**



**ACCN:** NM\_001242813

**ORF Size:** 2076 bp

**OTI Disclaimer:** The molecular sequence of this clone aligns with the gene accession number as a point of reference only. However, individual transcript sequences of the same gene can differ through naturally occurring variations (e.g. polymorphisms), each with its own valid existence. This clone is substantially in agreement with the reference, but a complete review of all prevailing variants is recommended prior to use. [More info](#)

**OTI Annotation:** This clone was engineered to express the complete ORF with an expression tag. Expression varies depending on the nature of the gene.

**Components:** The ORF clone is ion-exchange column purified and shipped in a 2D barcoded Matrix tube containing 10ug of transfection-ready, dried plasmid DNA (reconstitute with 100 ul of water).

**Reconstitution Method:**

1. Centrifuge at 5,000xg for 5min.
2. Carefully open the tube and add 100ul of sterile water to dissolve the DNA.
3. Close the tube and incubate for 10 minutes at room temperature.
4. Briefly vortex the tube and then do a quick spin (less than 5000xg) to concentrate the liquid at the bottom.
5. Store the suspended plasmid at -20°C. The DNA is stable for at least one year from date of shipping when stored at -20°C.

**RefSeq:** [NM\\_001242813.1](#), [NP\\_001229742.1](#)

**RefSeq Size:** 5250 bp

**RefSeq ORF:** 2079 bp

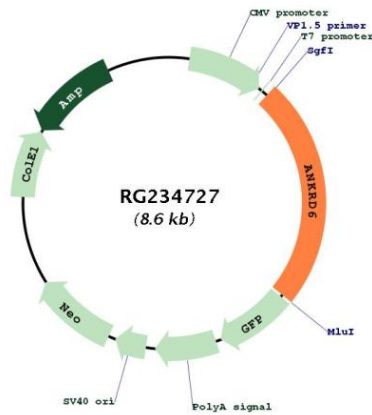
**Locus ID:** 22881

**UniProt ID:** [Q9Y2G4](#)

**Cytogenetics:** 6q15

**Gene Summary:** Recruits CKI-epsilon to the beta-catenin degradation complex that consists of AXN1 or AXN2 and GSK3-beta and allows efficient phosphorylation of beta-catenin, thereby inhibiting beta-catenin/Tcf signals.[UniProtKB/Swiss-Prot Function]

**Product images:**



Circular map for RG234727