

## Product datasheet for **RG234698**

### **FOXP1 (NM\_001244816) Human Tagged ORF Clone**

#### **Product data:**

Product Type:	Expression Plasmids
Product Name:	FOXP1 (NM_001244816) Human Tagged ORF Clone
Tag:	TurboGFP
Symbol:	FOXP1
Synonyms:	12CC4; hFKH1B; HSPC215; MFH; QRF1
Mammalian Cell Selection:	Neomycin
Vector:	pCMV6-AC-GFP (PS100010)
E. coli Selection:	Ampicillin (100 ug/mL)



[View online »](#)

ORF Nucleotide  
Sequence:

>RG234698 representing NM\_001244816  
Red=Cloning site Blue=ORF Green=Tags(s)

TTTTGTAATACGACTCACTATAGGGCGGCCGGAATTCGTCGACTGGATCCGGTACCGAGGAGATCTGCC  
GCC**CGGATCGCC**

ATGATGCAAGAATCTGGGACTGAGACAAAAAGTAAACGGTTCAGCCATCCAGAATGGGTGGGCGGCAGCA  
ACCACTTACTAGAGTGCGGCGGTCTTCGGGAGGGCGGTCCAACGAGAGACGCCGGCCGTGGACATCGG  
GGCAGCTGACCTCGCCCACGCCACGAGCAGCAGCAACAGGCACTTCAGGTGGCAAGACAGCTCCTTCTT  
CAGCAGCAACAGCAGCAGCAAGTTAGTGGATTAATAATCTCCCAAGAGGAATGACAAAACAACCAGCTCTTC  
AGGTTCCCGTGTGAGTGGCTATGATGACACCTCAAGTTATCACTCCCAGCAAATGCAGCAGATCTCCA  
GCAACAAGTGCTGAGCCCTCAGCAGCTCCAGGTTCTCTCCAGCAGCAGCAGGCCCTCATGCTTCAACAG  
CAGCAGCTTCAAGAGTTTATAAAAAACAACAGGAACAGTTGCAGCTTCAACTTTTACAACAACAACATG  
CTGAAAAACAGCCTAAAGAGCAACAGCAGGTGGCTACCCAGCAGTTGGCTTTTCAGCAGCAGCTTTTACA  
GATGCAGCAGTTACAGCAGCAGCACCTCTGTCTTTCAGCGCCAAGGCCTTCTGACAATTCAGCCCGGG  
CAGCCTGCCCTTCCCCTTCAACCTTGTCTCAAGGCATGATTCCAACAGAACTGCAGCAGCTCTGAAAAG  
AAGTGACAAGTGCTCATACTGCAGAAGAAACCACAGGCAACAATCACAGCAGTTTGGATCTGACCACGAC  
ATGTGTCTCCTCTCTGCACCTTCCAAGACCTCCTTAATAATGAACCCACATGCCTTACCAATGGACAG  
CTCTCAGTCCACACTCCCAAAAGGGAAAGTTTGTCCCATGAGGAGCACCCCATAGCCATCCTCTCTATG  
GACATGGTGTATGCAAGTGGCCAGGCTGTGAAGCAGTGTGCGAAGATTTCCAATCATTTCTAAAACATCT  
CAACAGTGAGCATGCGCTGGACGATAGAAGTACAGCCCAATGTAGAGTACAAATGCAGGTTGTACAGCAG  
TTAGAGCTACAGCTTGCAAAAGACAAAGAACGCCTGCAAGCCATGATGACCCACCTGCATGTGAAGTCTA  
CAGAACCCAAAGCCGCCCTCAGCCCTTGAATCTGGTATCAAGTGTCACTCTCTCAAGTCCGCATCGGA  
GGCTTCTCCACAGAGCTTACCTCATACTCCAACGACCCCAACCGCCCCCTGACTCCCGTCACCCAAGGC  
CCCTCTGTCAACAACCACAGCATGCACAGGTGGGACCCATCCGCAGGCGGTACTCAGACAAATACA  
ACGTGCCCATTTTCGTCAGCAGATATTGCGCAGAACCAAGAATTTTATAAGAACGCAGAAGTTAGACCACC  
ATTTACATATGCATCTTTAATTAGGAGGCCATTCTCGAATCTCCAGAAAAGCAGCTAACACTAAATGAG  
ATCTATAACTGGTTCACACGAATGTTTGTCTACTTCCGACGCAACGCGGCCACGTGGAAGAATGCAGTGC  
GTCATAATCTTAGTCTTCAAGTGTGTTTGTGCGAGTAGAAAACGTTAAAGGGGAGTATGGACAGTGG  
TGAAGTAGAATTCAAAAACGAAGGCCAAAAAGATCAGTGGTAACCCTTCCCTTATTA AAAACATGCAG  
AGCAGCCACGCCTACTGCACACCTCTCAATGCAGCTTTACAGGCTTCAATGGCTGAGAATAGTATACCTC  
TATACACTACCGTTCCATGGGAAATCCCCTCTGGGCAACTTAGCCAGCGCAATACGGGAAGAGCTGAA  
CGGGGCAATGGAGCATACCAACAGCAACGAGAGTGACAGCAGTCCAGGCAGATCTCCTATGCAAGCCGTG  
CATCCTGTACACGTCAAAGAAGAGCCCCTCGATCCAGAGGAAGCTGAAGGGCCCCCTGTCTTAGTGACAA  
CAGCCAACCACAGTCCAGATTTTGACCATGACAGAGATTACGAAGATGAACCAAGTAAACGAGGACATGGA  
G

**ACGCGT**ACGCGGCCGCTCGAG - GFP Tag - GTTTAA

**Protein Sequence:** >RG234698 representing NM\_001244816  
 Red=Cloning site Green=Tags(s)

```
MMQESGTETKSNQSAIQNGSGGSNHLLECGGLREGRSNGETPAVDIGAADLAHAQQQQQQALQVARQLL
QQQQQQQVSLKSPKRNDKQPALQVPVSVAMTPQVITPQQMQQILQQQVLSPOQLQVLLQQQALMLQQ
QQLQEFYKKQQEQLQLQLLQQQHAGKQPKQEQQVATQQLAFQQQLLQMQQLQQQHLLSLQRQGLLTIQPG
QPALPLQPLAQGMIPTELQQLWKEVTSAHATAEETTGNHSSLDLTTTCVSSSAPSKTSLIMNPASTNGQ
LSVHTPKRESLSHEEHPHSHPLYGHGVCKWPGCEAVCEDFQSFLKHLNSEHALDDRSTAQCRVQMVVQQ
LELQLAKDKERLQAMMTHLHVKSTEPKAAQPQLNLYSSVTLSSKASEASPQLPHTPTTPTAPLTPVTQG
PSVITTTSMHTVGPIRRYSYDKYNVPISSADIAQNQEFYKNAEVRPPFTYASLIRQAILESPEKQLTLNE
IYNWFTRMFAYFRRNAATWKNVVRHNLHLKCFVRVENVKGAVWTVDEVEFQKRRPQKISGNPSLIKNMQ
SSHAYCTPLNAALQASMAENSIPLYTTASMGNPGLGNLASAIREELNGAMEHTNSNESDSSPGRSPMQAV
HPVHVHKEEPLDPEEAEGPLSLVTTANHSPDFDHRDYEDEPVNEDME
```

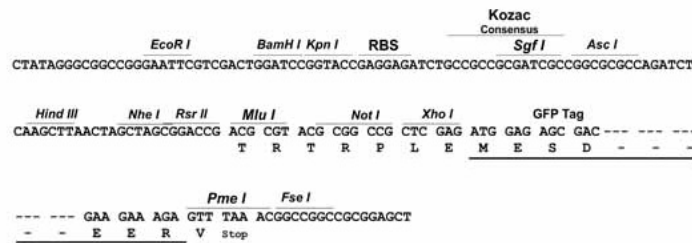
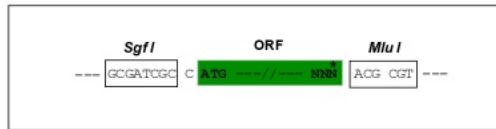
TRTRPLE - GFP Tag - V

**Restriction Sites:**

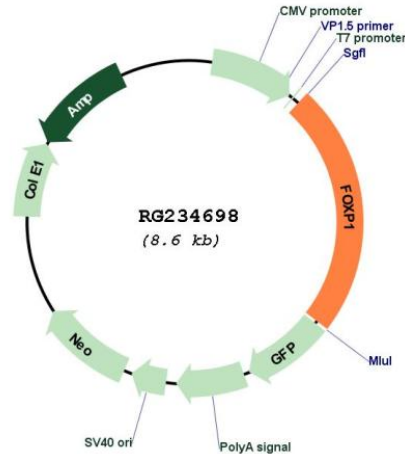
Sgfl-MluI

**Cloning Scheme:**

Cloning sites used for ORF Shuttling:



## Plasmid Map:



ACCN: NM\_001244816

ORF Size: 2031 bp

OTI Disclaimer: The molecular sequence of this clone aligns with the gene accession number as a point of reference only. However, individual transcript sequences of the same gene can differ through naturally occurring variations (e.g. polymorphisms), each with its own valid existence. This clone is substantially in agreement with the reference, but a complete review of all prevailing variants is recommended prior to use. [More info](#)

OTI Annotation: This clone was engineered to express the complete ORF with an expression tag. Expression varies depending on the nature of the gene.

Components: The ORF clone is ion-exchange column purified and shipped in a 2D barcoded Matrix tube containing 10ug of transfection-ready, dried plasmid DNA (reconstitute with 100 ul of water).

Reconstitution Method:

1. Centrifuge at 5,000xg for 5min.
2. Carefully open the tube and add 100ul of sterile water to dissolve the DNA.
3. Close the tube and incubate for 10 minutes at room temperature.
4. Briefly vortex the tube and then do a quick spin (less than 5000xg) to concentrate the liquid at the bottom.
5. Store the suspended plasmid at -20°C. The DNA is stable for at least one year from date of shipping when stored at -20°C.

RefSeq: [NM\\_001244816.2](#)

RefSeq Size: 7007 bp

RefSeq ORF: 2034 bp

Locus ID: 27086

UniProt ID: [Q9H334](#)

Cytogenetics: 3p13

Protein Families: Transcription Factors

**Gene Summary:** This gene belongs to subfamily P of the forkhead box (FOX) transcription factor family. Forkhead box transcription factors play important roles in the regulation of tissue- and cell type-specific gene transcription during both development and adulthood. Forkhead box P1 protein contains both DNA-binding- and protein-protein binding-domains. This gene may act as a tumor suppressor as it is lost in several tumor types and maps to a chromosomal region (3p14.1) reported to contain a tumor suppressor gene(s). Alternative splicing results in multiple transcript variants encoding different isoforms. [provided by RefSeq, Jul 2008]