

## Product datasheet for **RG234656**

### ZNF816A (ZNF816) (NM\_001202457) Human Tagged ORF Clone

#### Product data:

Product Type:	Expression Plasmids
Product Name:	ZNF816A (ZNF816) (NM_001202457) Human Tagged ORF Clone
Tag:	TurboGFP
Symbol:	ZNF816
Synonyms:	ZNF816A
Mammalian Cell Selection:	Neomycin
Vector:	pCMV6-AC-GFP (PS100010)
E. coli Selection:	Ampicillin (100 ug/mL)



[View online »](#)

**ORF Nucleotide Sequence:**

>RG234656 representing NM\_001202457  
 Red=Cloning site Blue=ORF Green=Tags(s)

TTTTGTAATACGACTCACTATAGGGCGGCCGGAATTCGTCGACTGGATCCGGTACCGAGGAGATCTGCC  
 GCC**CGGATCGCC**

ATGTTACGTGAGGAAGCCACCAAGAAGAGCAAAGAAAAGGAGCCAGGGATGGCTCTTCTCAGGGACGCT  
 TGACTTTCAGGGATGTGGCTATAGAGTTCTTTGGAGGAGTGGAAATGCCTGAACCTGCACAGAGGGC  
 TTTATACAGGGCTGTGATGTTGGAGAACTACAGGAACCTGGAGTTTGTGGATAGCTCTTTAAAATCCATG  
 ATGGAGTTCTCATCAACCAGGCACAGTATTACAGGAGAAGTGATCCACACAGGGACGTTGCAAAGACATA  
 AAAGTCATCACATTGGAGATTTTGTCTCCAGAAATGAAGAAAGATATTCATCACTTTGAGTTTCAGTG  
 GCAAGAAGTTGAAAGAAATGGCCATGAAGCACCCATGACAAAAATCAAAAAGTTGACTGGTAGTACAGAC  
 CGAAGTGATCACAGGCATGCTGGAACAAGCCTATTAAGATCAGCTTGATTAAGCTTTCATTGCGATC  
 TGCCCTGAACTCCACATGTTTCAGACTAAAGGGAAAATTAGTAACCAATTGGACAAGTCTATCGGTGCTTC  
 CTCAGCTTCAGAATCCCAAAGAATTTCTGTAGGCTCAAACTCATATTTCTAATAAGTATGGGAAGAAT  
 TTCTCCATTCTTCACTCACAAAAACAGGAAATATGCATGAGAGAAAAACCTTGCCAAAGTAATGAGT  
 GTGGCAAAGCCTTAATTATAGCTCACTCTTAAGGAGACACCACATAACCCATTCAAGAGAGAGAGAATA  
 TAAATGTGATGTATGTGGCAAGATCTTTAATCAGAAGCAATACATTGTATATCATCATAGATGTCACACT  
 GGTGAGAAAACCTTACAAGTGAATGAGTGTGGGAAGACCTTCACTCAGATGTCATCCCTTGTATGCCATC  
 GTAGACTTCATACTGGAGAGAAACCTTACAAGTGAATGAGTGTGGCAAGACCTTCAAGTGAATGAGTGTGGCAAGACTTTT  
 GGTCGAAATTCAGCCCTTGAATTCATAAGGCAATTCATACTGGAGAGAAACCTTACAAGTGAATGAGTGTGGCAAGACTTTT  
 GTGGCAAAGCCTTCAAGTGAATGAGTGTGGCAAGACTTTTACAAGTGAATGAGTGTGGCAAGACTTTTACAAGTGAATGAGT  
 CAAATGTGAAGAATGTGACAATGTTTACATTCGCAGATCACACCTTGAAAGACATAGGAAGATTCACTACT  
 GGAGAGGGATCATACAAATGTAAGGTTTGTGACAAGGTTTTCCGGAGTGATTCATACCTTCAGAACATC  
 AGAGAGTTCATACTGGAGAGAAACCATAACAAGTGAATAAATGTGGCAGGAGTTTCAGTCGGAAGTCATC  
 CCTTCAATACCATCATACACTTCACACTGGAGAGAAACCTTACACATGAATGAATGTGGCAAGGTTTTT  
 AGTCGAAGAGAAAACCTTGCACGTCATCATAGACTTCATGCTGGAGAGAAACCTTACAAATGTGAAGAAT  
 GTGACAAAGTTTTTCAGTCGCAGATCACACCTTGAAGACATAGGAGAATTCATACTGGGGAAAAACCATA  
 CAAATGTAAGGTTTGTGACAAGGCTTCCGGAGTGATTCATGCCTTGCAAACCATACGAGAGTTCATACT  
 GGAGAGAAACCTTACAAGTGAATAAATGTGCGAAGGTTTTAATCAAAAAGGAATCCTTGCACAACATC  
 AGAGAGTTCATACTGGAGAGAAACCTTACAAGTGAATGAATGTGGCAAGGTTTTAATCAAAAAGCAAG  
 CCTTGCAAACATCAGAGAGTTCATACTGCAGAGAAACCTTACAAGTGAATGAGTGTGGCAAAGCCTT  
 ACTGGACAGTCAACACTTATTCACCATCAAGCAATCCATGGGTGTAGGGAACCTTACAAATG

**ACGCGT**ACGCGGCCGCTCGAG - GFP Tag - GTTTAA

**Protein Sequence:**

>RG234656 representing NM\_001202457  
 Red=Cloning site Green=Tags(s)

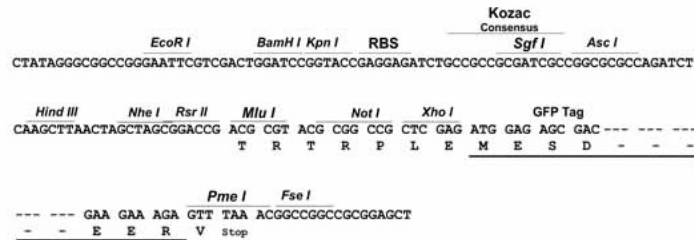
MLREEATKKSKEKEPGMALPQGRLTFRDVAIEFSLEEWKCLNPAQRALYRAVMLENYRNLEFVDSLSKSM  
 MEFSSSTRHSITGEVIHTGTLQRHKSHHIGDFCFPEMKKDIHHFEFQWQEVERNGHEAPMTKIKKLTGSTD  
 RSDHRHAGNKPIKDQLGLSFHSHLPELHMFQTKGKISNQLDKSIGASSASESQRISCRKLTHTISNKYGN  
 FLHSSFTQIQEICMREKPCQSNCEGKAFNYSSLLRRHHITHSREREYKCDVCGKIFNQKQYIVYHHRCHT  
 GEKTYKNECGKTFQMSLVCHRRLHTGEKPYKNECGKTFSEKSSLRCHRRLHTGEKPYKNECGKTF  
 GRNSALVIHKAihtGEKPYKNECGKTFsQKSSLQCHHILHTGEKPYKCEEDNVYIRSHLERHRKIHT  
 GEGSYKCKVCDKVFRRSDSYLAHQVHTGEKPYKCNKGRSFSRKSSLQYHHTLHTGEKPYTCNECGKVF  
 SRRENLARHRLHAGEKPYKCEEDKVFRRSHLERHRIHTGEKPYKCKVCDKAFRRSDSLANHTRVHT  
 GEKPYKCNKCAKVFNQKILAQHQVHTGEKPYKNECGKVFNQKASLAKHQVHTAEKPYKNECGKAF  
 TGQSTLIHHQAIHGRETLM

**TRTRPLE** - GFP Tag - V

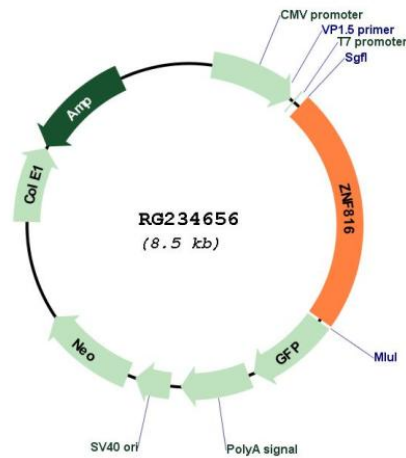
Restriction Sites: SgfI-MluI

Cloning Scheme:

Cloning sites used for ORF Shutting:



Plasmid Map:



ACCN: NM\_001202457

ORF Size: 1953 bp

<b>OTI Disclaimer:</b>	The molecular sequence of this clone aligns with the gene accession number as a point of reference only. However, individual transcript sequences of the same gene can differ through naturally occurring variations (e.g. polymorphisms), each with its own valid existence. This clone is substantially in agreement with the reference, but a complete review of all prevailing variants is recommended prior to use. <a href="#">More info</a>
<b>OTI Annotation:</b>	This clone was engineered to express the complete ORF with an expression tag. Expression varies depending on the nature of the gene.
<b>Components:</b>	The ORF clone is ion-exchange column purified and shipped in a 2D barcoded Matrix tube containing 10ug of transfection-ready, dried plasmid DNA (reconstitute with 100 ul of water).
<b>Reconstitution Method:</b>	<ol style="list-style-type: none"><li>1. Centrifuge at 5,000xg for 5min.</li><li>2. Carefully open the tube and add 100ul of sterile water to dissolve the DNA.</li><li>3. Close the tube and incubate for 10 minutes at room temperature.</li><li>4. Briefly vortex the tube and then do a quick spin (less than 5000xg) to concentrate the liquid at the bottom.</li><li>5. Store the suspended plasmid at -20°C. The DNA is stable for at least one year from date of shipping when stored at -20°C.</li></ol>
<b>RefSeq:</b>	<a href="#">NM_001202457.3</a>
<b>RefSeq Size:</b>	2609 bp
<b>RefSeq ORF:</b>	1956 bp
<b>Locus ID:</b>	125893
<b>UniProt ID:</b>	<a href="#">Q0VGE8</a>
<b>Cytogenetics:</b>	19q13.41
<b>Gene Summary:</b>	May be involved in transcriptional regulation.[UniProtKB/Swiss-Prot Function]