

Product datasheet for **RG234650**

TUG (ASPCR1) (NM_001251888) Human Tagged ORF Clone

Product data:

Product Type:	Expression Plasmids
Product Name:	TUG (ASPCR1) (NM_001251888) Human Tagged ORF Clone
Tag:	TurboGFP
Symbol:	TUG
Synonyms:	ASPCR1; ASPL; ASPS; RCC17; TUG; UBXD9; UBXN9
Mammalian Cell Selection:	Neomycin
Vector:	pCMV6-AC-GFP (PS100010)
E. coli Selection:	Ampicillin (100 ug/mL)



[View online »](#)

ORF Nucleotide Sequence:

>RG234650 representing NM_001251888
 Red=Cloning site Blue=ORF Green=Tags(s)

TTTTGTAATACGACTCACTATAGGGCGGCCGGAATTCGTCGACTGGATCCGGTACCGAGGAGATCTGCC
 GCC**GCGATCGCC**

ATGGCGGCCCGCAGGCGCGGAGGCTCCGCGTGTGCTGGCCCCGAACGGCCGGCCACACGG
 TGAAGGTGACGCCGAGCACCGTCTGCTCAGGTTCTGGAGGACACGTGCCGGCGCAGGACTTCAACCC
 CTGTGAATATGATCTGAAGTTTCAGAGGAGCGTCTGACCTTTCTCTCAGTGGAGATTGCAACCTG
 CCCAACATGCCAAGCTGGAGATGGTGCCCGCTCCCGGAGCCGTGAGGGGCTGAGAACATGGTTCGCA
 TCGCTTTGACGCTGGACGATGGCTCGAGGTTGCAGGACTTTTCTGTTACAGGCCAGACCTCTGGGAGCT
 TCTCAGCCATTTCCACAGATCAGGGAGTGCCTGCAGCACCCGGCGGGGCCACCCAGTCTGCGTGTAC
 ACGAGGGATGAGGTGACGGTGAAGCTGCCCTGCGGGGCACGACGCTGCAGTCGCTGGCCCTGACCGGG
 GCAGCGCCACCATCAGGTTTGTATGAAGTGTACGACCCGTGGCAAGACCCAGGAAGCCTGGGCTC
 GTCAGCGTCGGCTGGCCAGGCGCCAGCGCTCCACTTCCCTTGAATCTGGGAGCTCAGCCGCGGC
 GACTTGAGCCGTCCGGAGGACCGGACACCTCAGGGCCCTGCTGCGAGCACACTCAGGAGAAGCAGAGCA
 CAAGGGCACCCGAGCTGCCCTTTGTTCTTTCTCGGGTGGGGACAGAGACTGGGGGGCCCTCTGG
 GCCACGAGGCCCTCTGACATCATCTTACGTAAGTTGCCGAAGTCCCTCTCCAGCCCTGGAGGCCCTCC
 AAGCCAAAGAAGTCCAAGTCGGGCCAGGATCCCCAGCAGGAGCAGGAGCAGGAGCGGGAGCGGGATCCCC
 AGCAGGAGCAGGAGCGGGAGCGGCCCGTGGACCGGAGCCGTGGACCGGAGCCGGTGGTGTGCCACCC
 CGACCTGGAGGAGCGGCTGCAGGCTGGCCAGCGGAGCTGCCTGATGAGTTCTTTGAGCTGACGGTGGAC
 GACGTGAGAAGACGCTTGGCCAGCTCAAGAGTGAGCGGAAGCGCTGGAAGAAGCCCCCTTGGTGACCA
 AGCCCTTCAGGGAGGCGCAGATAAAGGAGAAGCTGGAGCGCTACCAAAGGTGGCTCTGAGGGTCTGTT
 CCCCGACCGCTACGTCTACAGGCTTCTTCCGCCCCAGCGAGACAGTGGGGGACTTGCAGACTTCGTG
 AGGAGCCACCTGGGAACCCGAGCTGTATTTACCTGTTTACACCCCTCAAAAAACAGTCTGGACG
 ACCACACGACACCCCTTTTACGCCCCAGCTTGGTGACCGGGTGGCTCCATTACCCCTGGGTCCCTCGT
 GAAACGGTGCCTGGGACCAGAGCAGAGAACACGCTTGCCAGTGGTAGGAGATGGAGGCGACGTGGACTCT
 GGGAGGCTTCTTTTGGGGTCCATCCAGAGGCCGAGCCTCTCCAAGCACTGGTACGCTCCATGCCACC
 CAGTCTGCCGACCCTCTCTCCACCATCCCTCGTCCGAGCAGTGGCGATCCCTCCCGAGTCAAGGCTGG
 GCACAAGCACGTGGGACAGGCCGGCGAACCTTCCCGGCCGCTCTGGTGACCTGGGAGCCGAGGAG
 CCGGCAGGTGTCTACCTGGAGCCTGGCCTGCTGGAGCATGCCATCTCCCATCTGCGGCCGATGTGCTGG
 TGCCAGGTACATGTCCAGGGCCCGGGTCCCTTCCCATTGCCAGCCCTGACCCTGCACCTAAGTC
 TGAGCCAGCTGCTGAGGAGGGGGCGCTGGTCCCCCTGAGCCATCCCAGGGACGGCCAGCCCGTGAAG
 AGGAGCCTGGCAAGGTGCCAAGTGGCTGAAGCTGCCGGCCAGCAAGAGG

ACGCGTACGCGGCCGCTCGAG – GFP Tag – GTTTAA

Protein Sequence:

>RG234650 representing NM_001251888
 Red=Cloning site Green=Tags(s)

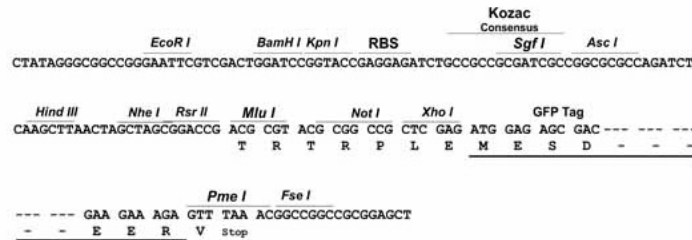
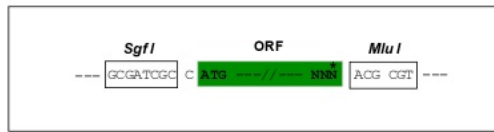
MAAPAGGGGSAVSVLAPNGRRHTVKVTPSTVLLQVLEDTCRRQDFNPCEYDLKFRQSVLDSLQWRFANL
 PNNAKLEMVPASRSREGPENMVRIALQLDDGSRLQDSFCSGQTLWELLSHFPQIRECLQHPGGATPVCVY
 TRDEVTGEAALRGTTLQSLGLTGGSATIRFVMKCYDPVGKTPGSLGSSASAGQAAASAPLPLESGELSRG
 DLSRPEDADTSGPCEHTQEKQSTRAPAAAPFVPFSGGGQRLGGPPGPTPLTSSAKLPKSLSSPGGGS
 KPKKSKSGQDPQQEQEQERERDPQQEQERERPDREPDREPVVCHPDLEERLQAWPAELPDEFELTVD
 DVRRRLAQLKSERKRLEEAPLVTKAFREAQIKEKLERYPKVALRVLPDRYVLQGFPRPSETVGDRLDFV
 RSHLGNPELSFYLFITPPKTVLDDHTQTLFQPQLGDRVAPFTLGP SLKRCLGPEQRTRLPVVGDGGDVDS
 GRLLFWGPSRGRASPSTGQPPCHPVCPRSPSPSPSSGDP SRVKAGHKHVGTRANLFPAAVLHLGAE
 PAGVYLEPGLLEHAISPSAADVLVARYMSRAAGSPSPLPAPDPAPKSEPAEEGALVPPEPIPGTAPVK
 RSLGKVPKWLKLPASKR

TRTRPLE – GFP Tag – V

Restriction Sites: SgfI-MluI

Cloning Scheme:

Cloning sites used for ORF Shutting:



ACCN: NM_001251888

ORF Size: 1941 bp

OTI Disclaimer: The molecular sequence of this clone aligns with the gene accession number as a point of reference only. However, individual transcript sequences of the same gene can differ through naturally occurring variations (e.g. polymorphisms), each with its own valid existence. This clone is substantially in agreement with the reference, but a complete review of all prevailing variants is recommended prior to use. [More info](#)

OTI Annotation: This clone was engineered to express the complete ORF with an expression tag. Expression varies depending on the nature of the gene.

Components: The ORF clone is ion-exchange column purified and shipped in a 2D barcoded Matrix tube containing 10ug of transfection-ready, dried plasmid DNA (reconstitute with 100 ul of water).

Reconstitution Method:

1. Centrifuge at 5,000xg for 5min.
2. Carefully open the tube and add 100ul of sterile water to dissolve the DNA.
3. Close the tube and incubate for 10 minutes at room temperature.
4. Briefly vortex the tube and then do a quick spin (less than 5000xg) to concentrate the liquid at the bottom.
5. Store the suspended plasmid at -20°C. The DNA is stable for at least one year from date of shipping when stored at -20°C.

RefSeq: [NM_001251888.2](#)

RefSeq Size: 2140 bp

RefSeq ORF: 1944 bp

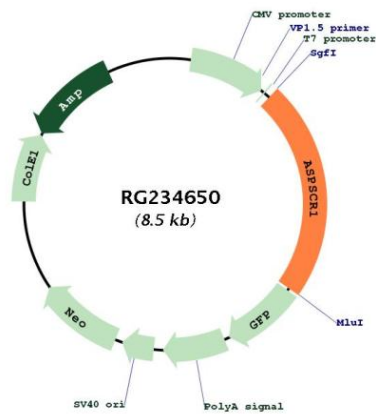
Locus ID: 79058

UniProt ID: [Q9BZE9](#)

Cytogenetics: 17q25.3

Gene Summary: The protein encoded by this gene contains a UBX domain and interacts with glucose transporter type 4 (GLUT4). This protein is a tether, which sequesters the GLUT4 in intracellular vesicles in muscle and fat cells in the absence of insulin, and redistributes the GLUT4 to the plasma membrane within minutes of insulin stimulation. Translocation t(X;17) (p11;q25) of this gene with transcription factor TFE3 gene results in a ASPSCR1-TFE3 fusion protein in alveolar soft part sarcoma and in renal cell carcinomas. Multiple alternatively spliced transcript variants have been found. [provided by RefSeq, Oct 2011]

Product images:



Circular map for RG234650