

Product datasheet for **RG234634**

Netrin G1 ligand (LRRC4C) (NM_001258419) Human Tagged ORF Clone

Product data:

Product Type:	Expression Plasmids
Product Name:	Netrin G1 ligand (LRRC4C) (NM_001258419) Human Tagged ORF Clone
Tag:	TurboGFP
Symbol:	LRRC4C
Synonyms:	NGL-1; NGL1
Mammalian Cell Selection:	Neomycin
Vector:	pCMV6-AC-GFP (PS100010)
E. coli Selection:	Ampicillin (100 ug/mL)



[View online »](#)

ORF Nucleotide Sequence:

>RG234634 representing NM_001258419
 Red=Cloning site Blue=ORF Green=Tags(s)

TTTTGTAATACGACTCACTATAGGGCGGCCGGGAATTCGTCGACTGGATCCGGTACCGAGGAGATCTGCC
 GCC**CGGATCGCC**

ATGTTGAACAAGATGACCTTACATCCACAGCAGATAATGATAGGTCCTAGGTTTAAACAGGGCCCTATTTG
 ACCCCCTGCTTGTGGTGTCTGCTGGCTCTTCAACTTCTTGTGGTGGCTGGTCTGGTGGGGCTCAGACCTG
 CCCTTCTGTGTGCTCCTGCAGCAACCAAGTTCAGCAAGGTGATTTGTGTTGCGAAAAAACCCTGCGTGAGGTT
 CCGGATGGCATCTCCACCAACACACGGCTGCTGAACCTCCATGAGAACCAATCCAGATCATCAAAGTGA
 ACAGCTTCAAGCACTTGAGACACTTGGAAATCCTACAGTTGAGTAGGAACCATATCAGAACCATTGAAAT
 TGGGGCTTCAATGGTCTGGCGAACCTCAACACTCTGGAACCTTTGACAATCGTCTTACTACCATCCC
 AATGGAGCTTTTGTATACTTGTCTAAACTGAAGGAGCTCTGGTTGCGAAACAACCCCATGAAAGCATCC
 CTTCTTATGCTTTAACAGAATTCCTTCTTTCGCCGACTAGACTTAGGGGAATTGAAAAGACTTTCATA
 CATCTCAGAAGGTGCCTTTGAAGTCTGTCCAACCTGAGGTATTGAACCTTGCCATGTGCAACCTTCGG
 GAAATCCCTAACCTCACACCGCTCATAAACTAGATGAGCTGGATCTTCTGGAATCATTATCTGCCA
 TCAGGCCTGGCTCTTCCAGGGTTTGATGCACCTTCAAAAACCTGTGGATGATACAGTCCCAGATTCAAGT
 GATTGAACGGAATGCCTTTGACAACCTTCACTACTAGTGGAGATCAACCTGGCACAATAATCTAACA
 TTAAGTGCCTATGACCTTTCACCTCCCTTGATCATCTAGAGCGGATACATTTACATCACAACCTTGG
 ACTGTAAGTGTGACATACTGTGGCTCAGCTGGTGGATAAAAGACATGGCCCCCTCGAACACAGCTTGTG
 TGCCCGGTGTAACACTCCTCCAATCTAAAGGGGAGGTACATTGGAGAGCTCGACCAGAATTACTTACA
 TGCTATGCTCCGGTATTGTGGAGCCCCCTGCAGACCTCAATGTCCTGAAAGCATGGCAGCTGAGCTGA
 AATGTCGGGCCCTCCACATCCCTGACATCTGTATCTTGGATTACTCCAAATGGAACAGTCATGACACATGG
 GCGGTACAAAGTCCGGATAGCTGTGCTCAGTGTGGTACGTTAAATTTACAAATGTAACCTGTGCAAGAT
 ACAGGCATGTACACATGTATGGTGAATAATCCGTTGGGAATACTACTGCTTACGCCACCTGAATGTTA
 CTGCAGCAACCACTACTCTTCTTACTTTTCAACCGTACAGTAGAGACTATGGAACCGTCTCAGGA
 TGAGGCACGGACCACAGATAACAATGTGGTCCCCTCCAGTGGTGGTGGAGACCACCAATGTGACC
 ACCTCTCTCACACCACAGAGCACAAGGTGCAGAGAAAACCTTACCATCCCAGTACTGATATAAACA
 GTGGGATCCCAGGAATTGATGAGGTCATGAAGACTACCAAAATCATCATTGGGTGTTTTGTGCCATCAC
 ACTCATGGCTGCAGTATGCTGGTCAATTTCTACAAGATGAGGAAGCAGCACCATCGGCAAAACCATCAC
 GCCCAACAAGGACTGTTGAAATTATTAATGTGGATGATGAGATTACGGGAGACACCCATGGAAGCC
 ACCTGCCATGCCTGCTATCGAGCATGAGCACCTAAATCACTATAACTCATAAAATCTCCCTTCAACCA
 CACAACAACAGTTAACACAATAAATTCAATACACAGTTCAGTGCATGAACCGTTATTGATCCGAATGAAC
 TCTAAAGACAATGTACAAGAGACTCAAATC

ACGCGTACGCGGCCGCTCGAG – GFP Tag – GTTTAA

Protein Sequence:

>RG234634 representing NM_001258419
 Red=Cloning site Green=Tags(s)

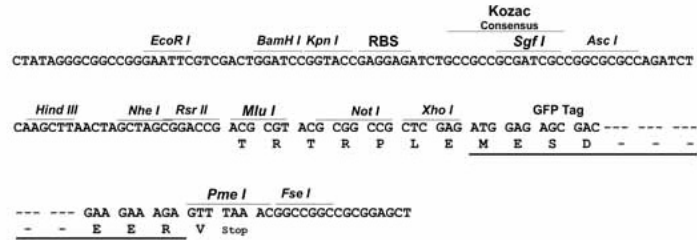
MLNKMTLHPQQIMIGPRFNRLFDPLLVLALLQLLVVAGLVRAQTCPVSCSNQFSKVICVRKNLREV
 PDGISTNTRLLNLHENQIQIIVKNSFKHLRHLEILQLSRNHIRTIEIGAFNGLANLNTLELFDNRLTTIP
 NGAFVYLSKLELWLRNPIESIPSYAFNRIPSLRRLDLGELKRLSYISEGAFEGLSNLRYLNLMCNLR
 EIPNLTPLIKLELDLGNHLSAIRPGSFQGLMHLQKLWMIQSQIQVIERNAFDNLQSLVEINLAHNNLT
 LLPHDLFTPLHHLERIHLLHNPWNCNDILWLSWWIKDMAPSNTACCARCNTPPNLKGRYIGELDQNYFT
 CYAPVIVEPPADLNVTEGMAAELKCRASLTSVSWITPNGTVMTHGAYKVRIAVLSDGTLNFTNVTVDQD
 TGMYTCMVSNSVGNNTASATLNVTAATTPFSYFSTVTVETMEPSQDEARTDNNVGPVVDWETNVT
 TSLTPQSTRSTEKFTTIPVTDINSIGIPGIDEVMKTKIIIGCFVAITLMAAVMLVIFYKMRKQHRQNH
 APTRTVEIINVDEITGDTMPESHLPMPAIEHEHLNHYSYKSPFNHTTTVNTINSIHSSVHEPLLIRMN
 SKDNVQETQI

TRTRPLE – GFP Tag – V

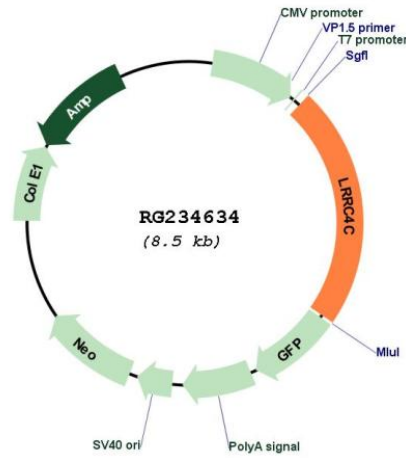
Restriction Sites: SgfI-MluI

Cloning Scheme:

Cloning sites used for ORF Shutting:



Plasmid Map:



ACCN: NM_001258419

ORF Size: 1920 bp

OTI Disclaimer:	The molecular sequence of this clone aligns with the gene accession number as a point of reference only. However, individual transcript sequences of the same gene can differ through naturally occurring variations (e.g. polymorphisms), each with its own valid existence. This clone is substantially in agreement with the reference, but a complete review of all prevailing variants is recommended prior to use. More info
OTI Annotation:	This clone was engineered to express the complete ORF with an expression tag. Expression varies depending on the nature of the gene.
Components:	The ORF clone is ion-exchange column purified and shipped in a 2D barcoded Matrix tube containing 10ug of transfection-ready, dried plasmid DNA (reconstitute with 100 ul of water).
Reconstitution Method:	<ol style="list-style-type: none">1. Centrifuge at 5,000xg for 5min.2. Carefully open the tube and add 100ul of sterile water to dissolve the DNA.3. Close the tube and incubate for 10 minutes at room temperature.4. Briefly vortex the tube and then do a quick spin (less than 5000xg) to concentrate the liquid at the bottom.5. Store the suspended plasmid at -20°C. The DNA is stable for at least one year from date of shipping when stored at -20°C.
RefSeq:	NM_001258419.2
RefSeq Size:	2795 bp
RefSeq ORF:	1923 bp
Locus ID:	57689
UniProt ID:	Q9HCJ2
Cytogenetics:	11p12
Protein Families:	Druggable Genome, Transmembrane
Protein Pathways:	Axon guidance
Gene Summary:	NGL1 is a specific binding partner for netrin G1 (NTNG1; MIM 608818), which is a member of the netrin family of axon guidance molecules (Lin et al., 2003 [PubMed 14595443]).[supplied by OMIM, Mar 2008]