

Product datasheet for **RG234631**

ZNF549 (NM_001199295) Human Tagged ORF Clone

Product data:

Product Type:	Expression Plasmids
Product Name:	ZNF549 (NM_001199295) Human Tagged ORF Clone
Tag:	TurboGFP
Symbol:	ZNF549
Mammalian Cell Selection:	Neomycin
Vector:	pCMV6-AC-GFP (PS100010)
E. coli Selection:	Ampicillin (100 ug/mL)



[View online »](#)

ORF Nucleotide Sequence:

>RG234631 representing NM_001199295
 Red=Cloning site Blue=ORF Green=Tags(s)

TTTTGTAATACGACTCACTATAGGGCGGCCGGAATTCGTCGACTGGATCCGGTACCGAGGAGATCTGCC
 GCC**CGCATCGCC**

ATGGCCGAGGCAGCGCTAGTGAATACGCCGAGATTCCCATGGTAAACAGAAGAGTTTGTGAAACCATCAC
 AGGGCCATGTGACCTTTGAGGATATTGCTGTGACTTCTCCAGGAGGAGTGGGGCTCCTTGATGAAGC
 TCAAAGGTGCCTGTATCATGATGTGATGCTGGAGAACTTTTCGCTTATGGCCTCAGTAGGTTGTTTGCAT
 GGAATAGAGGCTGAGGAGGCCCTTCTGAGCAGACTCTTCTGCGCAAGGAGTGTACAGGCCAGGACTC
 CAAAGCTAGGTCCTTCCATCCCAAATGCTCATTCTTGAGATGTGTATCCTGGTCATGAAAGACATTTT
 GTACCTCAGTGAGCATCAGGGGACACTTCCCTGGCAGAAACCTTATACGTCTGTGGCCAGTGGGAAATGG
 TTTTCATTTGGTCTAACCTGCAACAGCACCAGAACCAGGACAGTGGAGAGAAACACATCAGAAAGGAGG
 AGAGCAGTGCCTTGCTTCTGAATAGCTGCAAAAATCCTCTGTGAGACAATCTTTCCCATGCAAAGATGT
 TGAGAAGGATTTCCAACCATCTGGGCCCTTCTCAACACCAGACCACCCACAGCAGACAAGAGTATGCA
 CATAGAAGCAGGGAGACCTTTCAACAAAGACGTTACAAAATGTGAGCAAGTTTTCAATGAGAAAGTTCATG
 TTAAGTGCATCAGAGAGTCCACACTGGAGAAAAGCTTATAAGCGTAGGGAATATGGGAAATCCTTGAA
 CTCTAAATACTTATTTGTTGAACACCAGAGAACCATAATGCAGAAAAGCCTTATGTGTGCAATATATGT
 GGGAAATCATTCTCCATAAACAAACACTCGTTGGGCACCAGCAGAGAATTCACACTAGAGAAAGGTCTT
 ATGTGTGCATCGAATGTGGGAAATCCTTGAGCTCCAAATACTCACTTGTGGAACACCAGAGAACCATAA
 TGGAGAAAAGCCTTATGTGTGCAATGTATGTGGGAAATCATTCCGCCACAAACAAACATTTGTTGGCCAT
 CAGCAGAGAATCCACACTGGAGAGAGGCCCTTATGTGTGTATGGAATGTGGGAAATCTTTTATTCTTCT
 ATGACCCGATTCGACACCAGAGAGTTACACTGGAGAAGGGCTTATCAGTGCAGTGAATGTGGGAAATC
 CTTTCATATACAAACAGTCACTTCTTGATCACCATAGAATCCACACGGGAGAAAGGCCTTATGAGTGCAAA
 GAATGTGGGAAAGCCTTATTCAAAAAAAGACTTCTTGAGCACCAGAGAATTCATACTGGAGAAAAGC
 CTTATGTGTGCATCATATGTGGGAAATCATTATCCGCTCGTCTGACTACATGCGACACCAGAGAATTCA
 CACTGGAGAAAAGGCCTTATGAATGCAGTACTGTGGGAAAGCCTTCACTCCAAACAAACACTTCTTAAG
 CATCACAAAATCCACACTAGAGAAAAGCCTTATGAATGCAGTGAATGTGGAAAAGCCTTCTACCTTGAGG
 TTAACCTTCTCAGCACAAAAGAATCCATACTAGAGAACAACCTTGTGAGTGAATGAATGTGGAAAAGT
 CTTCAGCCACAAAAGACTTCTTGAGCACCAGAAAAGTTCACACTGGCGAAAAGCCTGTGAGTGCAGT
 GAATGTGGGAAATGCTTTAGACACCGCACCAGCCTCATTCAACACCAGAAAAGTTCACAGTGGAGAGGGC
 CTATAACTGCACTGCATGTGAGAAGGCCTTATCTATAAAAAACAACTTGTGAGCATCAGCGAATCCA
 CACCGGAGAAAAGCCGTATGAATGTGTAATGTGGGAAAGCCTTCAACAAAAGATATCCCTTGTGAGG
 CACCAGAAGGTACATATAACAGAAGAGCCC

ACGCGTACGCGGCCGCTCGAG – GFP Tag – GTTTAA

Protein Sequence:

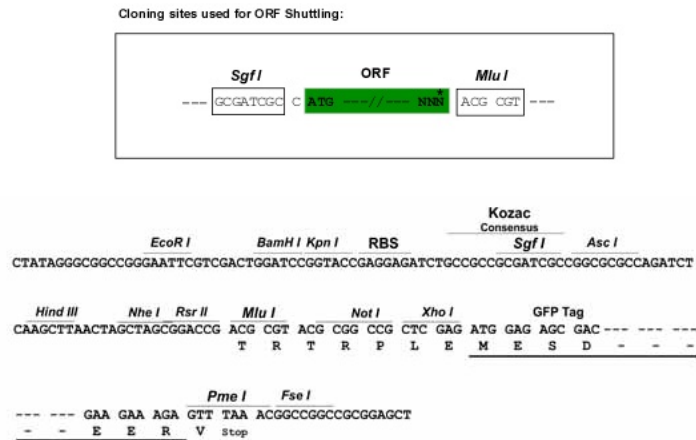
>RG234631 representing NM_001199295
 Red=Cloning site Green=Tags(s)

MAEAAALVNTQPIMVTEEFVKPSQGHVTFEDIAVYFSQEEWGLLDEAQRCLYHDVMLENFSLMASVGCLH
 GIEAEEAPSEQTLAQGVSAQARTPKLGPSPINAHSCMCIILVMKDILYLSEHQGTLWPQKPYTSVASGKW
 FSFGSNLQQHQNDQSGEKHIRKEESSALLLNSCKIPLSDNLFPCCKDVEKDFPTILGLLQHQTTTHSRQEYA
 HRSRETFQQRRYKCEQVFNEKVHVTEHQRVHTGEKAYKRREYKSLNSKYLVEHQRTTHNAEKPYVCNIC
 GKSFLHKQTLVGHQQRIRHTRERSYVICGKSLSSKYSLVEHQRTTHNGEKPYVCNVCGKSFRRHKQTFVGH
 QQRIRHTGERPYVMECGKSF IHSYDRIRHQRVHTGEGAYQCSECGKSF IYKQSLLDHHRIRHTGERPYECK
 ECGKAFIHKRRLLEHQRIHTGEKPYVIC ICGKSFIRSSDYMRHQRIHTGERAYECSDCGKAFISKQTLK
 HHKIHTRERPYECSECGKGFYLEVKLLQHQRIHTREQLCECNECGKVFVSHQKRLLEHQVHTGEKPECS
 ECGKCFRHRTSLIQHQKVHSGERPYNCTACEKAFIYKKNLVEHQRIHTGEKPYECGKCGKAFNKRYSLVR
 HQKVHITTEP

TRTRPLE – GFP Tag – V

Restriction Sites: SgfI-MluI

Cloning Scheme:



ACCN: NM_001199295

ORF Size: 1920 bp

OTI Disclaimer: The molecular sequence of this clone aligns with the gene accession number as a point of reference only. However, individual transcript sequences of the same gene can differ through naturally occurring variations (e.g. polymorphisms), each with its own valid existence. This clone is substantially in agreement with the reference, but a complete review of all prevailing variants is recommended prior to use. [More info](#)

OTI Annotation: This clone was engineered to express the complete ORF with an expression tag. Expression varies depending on the nature of the gene.

Components: The ORF clone is ion-exchange column purified and shipped in a 2D barcoded Matrix tube containing 10ug of transfection-ready, dried plasmid DNA (reconstitute with 100 ul of water).

Reconstitution Method:

1. Centrifuge at 5,000xg for 5min.
2. Carefully open the tube and add 100ul of sterile water to dissolve the DNA.
3. Close the tube and incubate for 10 minutes at room temperature.
4. Briefly vortex the tube and then do a quick spin (less than 5000xg) to concentrate the liquid at the bottom.
5. Store the suspended plasmid at -20°C. The DNA is stable for at least one year from date of shipping when stored at -20°C.

RefSeq: [NM_001199295.1](#), [NP_001186224.1](#)

RefSeq Size: 4136 bp

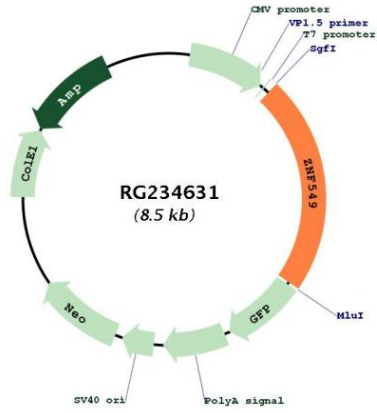
RefSeq ORF: 1923 bp

Locus ID: 256051

UniProt ID: [Q6P9A3](#)

Cytogenetics: 19q13.43
 Protein Families: Transcription Factors
 Gene Summary: May be involved in transcriptional regulation.[UniProtKB/Swiss-Prot Function]

Product images:



Circular map for RG234631