

Product datasheet for **RG234628**

Glyt1 (SLC6A9) (NM_001261380) Human Tagged ORF Clone

Product data:

Product Type:	Expression Plasmids
Product Name:	Glyt1 (SLC6A9) (NM_001261380) Human Tagged ORF Clone
Tag:	TurboGFP
Symbol:	Glyt1
Synonyms:	GCENSG; GLYT1
Mammalian Cell Selection:	Neomycin
Vector:	pCMV6-AC-GFP (PS100010)
E. coli Selection:	Ampicillin (100 ug/mL)



[View online »](#)

ORF Nucleotide Sequence:

>RG234628 representing NM_001261380
 Red=Cloning site Blue=ORF Green=Tags(s)

CTATAGGGCGGCCGGGAATTCGTCGACTGGATCCGGTACCGAGGAGATCTGCCGCCGCGATCGCCGGCGC
 GCCC

ATGAGCGGGGAGACACGCGGGCTGCGATCGCTCGCCCCAGGATGGCCGGGCTCATGGACCTGTGGCC
 CCTCTTCCCAGAACAGAAATGGTGTGTGCCACGCGAGGCCACCAAGAGGGACCAGAACCTCAAACGGGG
 CAACTGGGGCAACCAGATCGAGTTTGTACTGACGAGCGTGGGCTATGCCGTGGGCTGGGCGCTTCATG
 TTCCCCTACTTTCATGCTCATCTTCTGCGGGATCCCCCTTTCTTCATGGAGCTCTCCTTCGGCCAGT
 TTGCAAGCCAGGGGTGCCTGGGGTCTGGAGGATCAGCCCCATGTTCAAAGGAGTGGGCTATGGTATGAT
 GGTGGTGTCCACCTACATCGGCATCTACTACAATGTGGTTCATCTGCATCGCCTTCTACTACTTCTCTCG
 TCCATGACGCACGTGCTGCCCTGGGCTACTGCAATAACCCCTGGAACACGCATGACTGCGCCGGTGTAC
 TGGACGCCTCAAACCTCACCATGGCTCTCGGCCAGCGCCTTGCCAGCAACCTCTCCACCTGCTCAA
 CCACAGCCTCCAGAGGACCAGCCCCAGCGAGGAGTACTGGAGGCTGTACGTGCTGAAGCTGTCAGATGAC
 ATTGGAACTTTGGGGAGGTGCGGCTGCCCTCCTTGGCTGCCTCGGTGTCTCCTGGTGGTCTGCTTCC
 TCTGCCTCATCCGAGGGTCAAGTCTTACAGGAAAGTGGTGTACTTACAGCCACGTTCCCTACGTGGT
 GCTGACCATTTCTGTTGTCCGCGGAGTGACCCTGGAGGGAGCCTTGGACGGCATCATGTACTACCTAACCC
 CCGCAGTGGGACAAGATCCTGGAGGCCAAGGTGTGGGGTGTGCTGCCTCCCAGATCTTCTACTACTGG
 GCTGCGCGTGGGAGGCCTATCACCATGGCTTCTACAACAAGTCCACAATAACTGTTACCGGGACAG
 TGTATCATCAGCATCACCACCTGTGCCACCGCTCTATGCTGGCTTCGTCATCTTCCATCCTCGGC
 TTCATGGCCAATCACCTGGGCGTGGATGTGTCCCGTGTGGCAGACCACGGCCCTGGCCTGGCCTTCGTGG
 CTTACCCCGAGGCCCTCACACTACTTCCATCTCCCCGCTGTGGTCTCTGCTCTTCTTCATGCTTAT
 CCTGCTGGGGCTGGGCACTCAGTTCTGCCTCCTGGAGACGCTGGTACAGCCATTGTGGATGAGGTGGGG
 AATGAGTGGATCCTGCAGAAAAAGACCTATGTGACCTTGGGCGTGGCTGTGGCTGGCTTCTGCTGGGCA
 TCCCCCTCACCAGCCAGGCAGGCATCTATTGGCTGCTGCTGATGGACAATATGCGGCCAGCTTCTCCTT
 GGTGGTATCTCCTGCATCATGTGTGTGGCCATCATGTACATCTACGGGCACCGAACTACTTCCAGGAC
 ATCCAGATGATGCTGGGATTCCCACCACCCTCTTCTTTCAGATCTGCTGGCGCTTCGTCTCTCCGCCA
 TCATCTTCTTTATTCTAGTTTTCTACTGTGATCCAGTACCAGCCGATCACCTACAACCCTACCAGTACCC
 AGGCTGGGCGTGGCCATTGGCTTCTCATGGCTCTGTCTCCGCTCTGCATCCCCCTCTACGCCATG
 TTCGGCTCTGCCGCACAGACGGGACACCCTCCTCCAGCGTTTAAAAATGCCACAAGCCAAGCAGAG
 ACTGGGGCCCTGCCCTCCTGGAGCACCGGACAGGGCGCTACGCCCCACCATAGCCCCCTCTCCTGAGGA
 CGGCTTCGAGGTCCAGCCACTGCACCCGACAAGGCGCAGATCCCCATTGTGGGAGTAATGGCTCCAGC
 GCCTCCAGGACTCCCGGATA

ACGCGTACGCGGCCGCTCGAG - GFP Tag - GTTTAA

Protein Sequence:

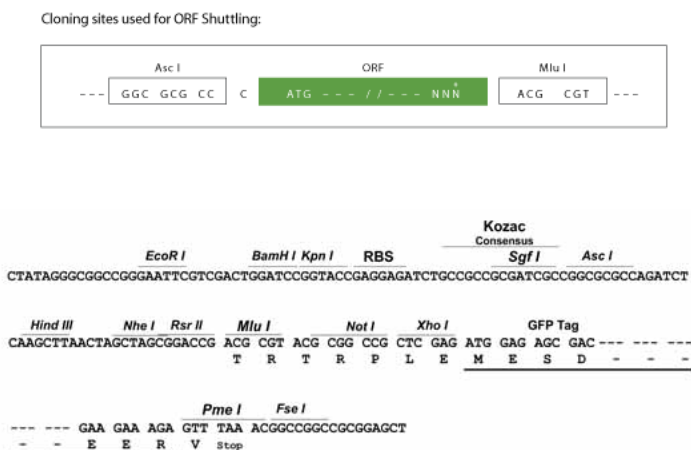
>RG234628 representing NM_001261380
 Red=Cloning site Green=Tags(s)

MSGGDTRAAIARPRMAAAHGPVAPSSPEQNGAVPSEATKRDQNLKRGNWGNQIEFVLT SVGYAVGLGAFM
 FPYFIMLIFCGIPLFMELSFQQFASQGLGVWRISPMFKGVGYGMMVSTYIGIYYNVVICIAFYFFS
 SMTHVLPWAYCNPWNTHDCAGVLDASNLNNGSRPAALPSNLSHLLNHSLQRTSPSEEWRLVYVKLSDD
 IGNFGEVRLPLLGLGVSFLVFLCLIRGVKSSGKVYVFTATFPYVVL TILFVRGVTLEGAFDGIMYYLT
 PQWDKILEAKVWGDAASQIFYSLGCAWGLITMASYNKFNHNCYRDSV IISITNCATSVYAGFVIFSI LG
 FMANHLGVDVSRVADHGPGLAFVAYPEALTLPIISPLWLLFFMLILLGLGTQFCLETLVTAI VDEVG
 NEWILQKKTYYTLGVAVAGFLLGIPLTSQAGIYWLLMDNYAASFSLVVISIMCVAIMYIYGRNRYFD
 IQMMLGFPPPLFFQICWRFVSPAIIFL VFTVIQYQPIYNYHYQPGWAVAIGFLMALSSVLCIPLYAM
 FRLCRTDGDLLQRLKNATKPSRDWGPALLEHRTGRYAPTIAPSPEDGFVQPLHPDKAQIPIVGSNGSS
 RLQDSRI

TRTRPLE - GFP Tag - V

Restriction Sites: AscI-MluI

Cloning Scheme:



ACCN: NM_001261380

ORF Size: 1911 bp

OTI Disclaimer: The molecular sequence of this clone aligns with the gene accession number as a point of reference only. However, individual transcript sequences of the same gene can differ through naturally occurring variations (e.g. polymorphisms), each with its own valid existence. This clone is substantially in agreement with the reference, but a complete review of all prevailing variants is recommended prior to use. [More info](#)

OTI Annotation: This clone was engineered to express the complete ORF with an expression tag. Expression varies depending on the nature of the gene.

Components: The ORF clone is ion-exchange column purified and shipped in a 2D barcoded Matrix tube containing 10ug of transfection-ready, dried plasmid DNA (reconstitute with 100 ul of water).

Reconstitution Method:

1. Centrifuge at 5,000xg for 5min.
2. Carefully open the tube and add 100ul of sterile water to dissolve the DNA.
3. Close the tube and incubate for 10 minutes at room temperature.
4. Briefly vortex the tube and then do a quick spin (less than 5000xg) to concentrate the liquid at the bottom.
5. Store the suspended plasmid at -20°C. The DNA is stable for at least one year from date of shipping when stored at -20°C.

RefSeq: [NM_001261380.2](#)

RefSeq Size: 3183 bp

RefSeq ORF: 1914 bp

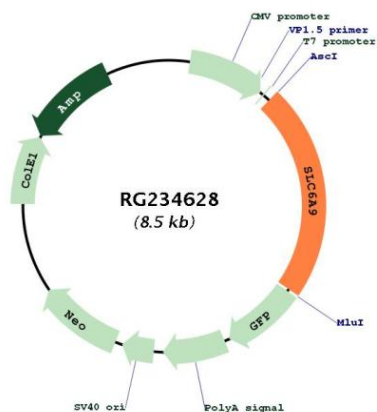
Locus ID: 6536

Cytogenetics: 1p34.1

Protein Families: Druggable Genome, Transmembrane

Gene Summary: The amino acid glycine acts as an inhibitory neurotransmitter in the central nervous system. The protein encoded by this gene is one of two transporters that stop glycine signaling by removing it from the synaptic cleft. [provided by RefSeq, Jun 2016]

Product images:



Circular map for RG234628