

Product datasheet for **RG234623**

ZNF790 (NM_001242802) Human Tagged ORF Clone

Product data:

Product Type:	Expression Plasmids
Product Name:	ZNF790 (NM_001242802) Human Tagged ORF Clone
Tag:	TurboGFP
Symbol:	ZNF790
Mammalian Cell Selection:	Neomycin
Vector:	pCMV6-AC-GFP (PS100010)
E. coli Selection:	Ampicillin (100 ug/mL)



[View online »](#)

ORF Nucleotide Sequence:

>RG234623 representing NM_001242802
 Red=Cloning site Blue=ORF Green=Tags(s)

TTTTGTAATACGACTCACTATAGGGCGGCCGGAATTCGTCGACTGGATCCGGTACCGAGGAGATCTGCC
 GCC**CGGATCGCC**

ATGGCCCATTTGATGATGTTTCAGGGATGTGGCTGTAGATTTCTCTCAGGAGGAGTGGGAGTGCCTGGACC
 TGGAACAGAGGGATTTATATAGAGATGTGATGTTGGAGAACTACAGCAACATGGTCTCACTGGGTTTTTG
 CATTATCAGCCAGAAGCGTTCTCTTTATTGGAGAAAGGAAAGAGCCCTGGAAGATTTTGGGGATGAG
 ACAAGAGGACCTTCCCAGACATGCAGTCGAGGTGTAGACCAAGAAGTTATTACCAAAAAATGGCATT
 TTGAGAGAGAAAAGCCCAATTGGAAAATAGAGAATTTGTA AAAACACAGCCTTGACTGTTTATGTTT
 TAGAGGTGACTGGGAAGGCAACTCAGTTTCAAACACTTCAAGATAATCAAGAGGAATGCTTCAAGCAG
 GTGATACGCACCTGTGAAAAAGGCCACTTTTAAACCAGCATACAGTGTTAATCTACACCAGAGACTTA
 ATACAGGAGACAACTGAATGAATTTAAGAAGTGGGAAAGCCTTTATTTCTGGTTTCAGATCATACTCA
 ACATCAGTTAATTCACACAAGTGAGAAAATCTGTGGAGATAAAGAATGTGGGAATACCTTCTTCTGAT
 TCAGAAGTTATCAATATCAGACAGTTCACACTGTTAAGAAAACATATGAATGTAAGAATGTGGGAAGT
 CTTTTAGTTTACGTTTCGAGTCTTACTGGTCATAAGAGAATTCATACCGGTGAGAAACCTTTTAAATGTAA
 GGATTGTGGGAAAGCCTTTAGATTTTCAATCACAACTTAGTGTCCATAAGCGAATTCATACTGGTGAGAAA
 TCTTATGAATGTAAGGAATGTGGGAAGGCCCTTTAGTTGTGGCTCAGATCTTACTCGACATCAGAGAATTC
 ATACTGGTAAAAACCTATGAATGTAATGAATGTAGAAAGGCCCTTTAGTCAGCGATCACATCTTATTA
 ACATCAGAGAATTCACACTGGTAAAAACCTTATGAATGTAAGGAGTGTGGGAAAGCTTTTACTCGTGG
 TCACACCTAACTCAGCATCAGAGAATTCATACTGGTGAAGAAATTCATGAGTGAAGGAATGTGGAAAAG
 CCTTTATTCGTGGTTCAAATCTTGCTCAACATCAGAATGTTTATGTTGGTGAAGAACTTATAAAATGTGA
 GAAATGTGGGAAAGCCTATATTTGGAGCTCACACCTTGCTCGACATCAGCGAATTCATACTGGCAGGAAA
 CCTTATGAATGTAAGCAATGCGGGAAGACTTTTACTTGGGCTTCGTATCTTGCTCAACATGAGAAAATTC
 ACAATGAGAGGAAATCCTATGAATGTAAGGAATGTGGAAAGACCTTTCTCATGGCTCAGAGTTTAAATCG
 ACATCAGAAAATTCATACTGGTGAAGAAAATGTAATGTAAGGAATGTGGAAAGACCTTTTCTGTTGGT
 TCAGAATTAATCGACACCAGAAAATTCATACTGGAAAGAGGCCATATGAATGTGAAGAATGTGGAAAAG
 CCTTCTCTGGGTTTCACACTTACTCGACATCAGAGAATGCATACTGGTGAAGAACCTTACGTATGTA
 AGAATGTGGGAAATCTTTATCTGGGGTTCACAGCTTACACGACATAAGAAAATTCATACTGATGCAGAA
 CCTTATGGATGCAAGAAAAGTAGCCACATCTTTAGTCACCATTATTTTACTGAACAAAAATTCATA
 ATAGTGCAAACTCTGTGAATGGACAGACTATGGGAACACCTTTAGTCATGAGTCAAACCTTGTCTCAACA
 CCAGAATATTTACACTTTTGAGAAATCCTATGAATTTAAGATTTTGAAGAAAGCATTCTTCAAGCTCT
 CACTTCATTTCACTCTTG

ACGCGTACGCGGCCGCTCGAG – GFP Tag – GTTTAA

Protein Sequence:

>RG234623 representing NM_001242802
 Red=Cloning site Green=Tags(s)

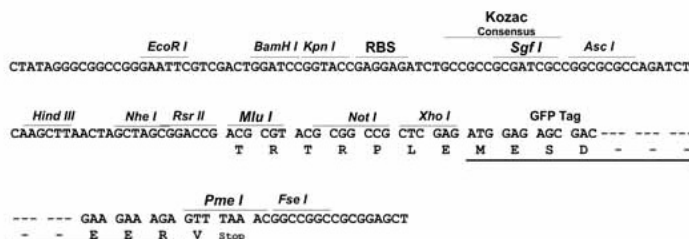
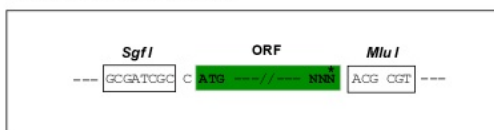
MAHLMFRDVAVDFSQEWECLDLEQRDLRYDVMLENYSNMVSLGFCIYQPEAFSLLEKKGEPWKILRDE
 TRGPCPDMQSRQTKLLPKNGIFEREIAQLEIMRICKNHSLDCLCFRGDWEGNTQFQTLQDNQEECFKQ
 VIRTCEKRPTFNQHTVFNLHQRLNTGDKLNEFKELGKAFISGSDHTQHQLIHTSEKFCGDKCEGNTFLPD
 SEVIQYQTVHTVKKTYECKEKGKSFSLRSSLTGHKRIHTGKPFKCKDCGKAFRFHSQLSVHKRIHTGK
 SYECKEKGKAFSCGSDLTRHQRIHTGKPYECNECRKAFSQRSHLIKHQRIHTGKPYECKEKGKAFTRG
 SHLTQHQRHTGKESHECKEKGKAFIRGSNLAQHQNHVHGRKPYKCEKCGKAYIWSHLARHQRIHTGRK
 PYECKQCKTFTWASYLAQHEKIHNERKSYECKEKGKTFHLHGSEFNHRHQIHTGERNYECKEKGKTFFRG
 SELNRHQIHTGKRPYECECGKAFLLWGSQLTRHQRMHTGEEPYYCKEKGKSF IWGSQLTRHKKIHTDAE
 PYGCKKSSHIFSHSYFTEQKIHN SANLCEWTDYGNF SHESNFAQHQNIYTFEKSYEFKDFEKAFFSSS
 HFISLL

TRTRPLE – GFP Tag – V

Restriction Sites: SgfI-MluI

Cloning Scheme:

Cloning sites used for ORF Shutting:



ACCN: NM_001242802

ORF Size: 1908 bp

OTI Disclaimer: The molecular sequence of this clone aligns with the gene accession number as a point of reference only. However, individual transcript sequences of the same gene can differ through naturally occurring variations (e.g. polymorphisms), each with its own valid existence. This clone is substantially in agreement with the reference, but a complete review of all prevailing variants is recommended prior to use. [More info](#)

OTI Annotation: This clone was engineered to express the complete ORF with an expression tag. Expression varies depending on the nature of the gene.

Components: The ORF clone is ion-exchange column purified and shipped in a 2D barcoded Matrix tube containing 10ug of transfection-ready, dried plasmid DNA (reconstitute with 100 ul of water).

Reconstitution Method:

1. Centrifuge at 5,000xg for 5min.
2. Carefully open the tube and add 100ul of sterile water to dissolve the DNA.
3. Close the tube and incubate for 10 minutes at room temperature.
4. Briefly vortex the tube and then do a quick spin (less than 5000xg) to concentrate the liquid at the bottom.
5. Store the suspended plasmid at -20°C. The DNA is stable for at least one year from date of shipping when stored at -20°C.

RefSeq: [NM_001242802.1](#), [NP_001229731.1](#)

RefSeq Size: 2451 bp

RefSeq ORF: 1911 bp

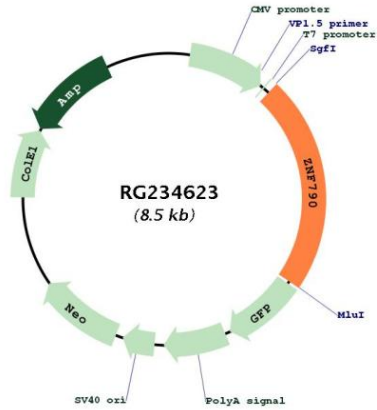
Locus ID: 388536

UniProt ID: [Q6PG37](#)

Cytogenetics: 19q13.12

Gene Summary: May be involved in transcriptional regulation.[UniProtKB/Swiss-Prot Function]

Product images:



Circular map for RG234623