

## Product datasheet for **RG234622**

### ZNF790 (NM\_001242801) Human Tagged ORF Clone

#### Product data:

Product Type:	Expression Plasmids
Product Name:	ZNF790 (NM_001242801) Human Tagged ORF Clone
Tag:	TurboGFP
Symbol:	ZNF790
Mammalian Cell Selection:	Neomycin
Vector:	pCMV6-AC-GFP (PS100010)
E. coli Selection:	Ampicillin (100 ug/mL)



[View online »](#)

**ORF Nucleotide Sequence:**

>RG234622 representing NM\_001242801  
 Red=Cloning site Blue=ORF Green=Tags(s)

TTTTGTAATACGACTCACTATAGGGCGGCCGGAATTCGTCGACTGGATCCGGTACCGAGGAGATCTGCC  
 GCC**CGGATCGCC**

ATGGCCCATTTGATGATGTTTCAGGGATGTGGCTGTAGATTTCTCTCAGGAGGAGTGGGAGTGCCTGGACC  
 TGGAACAGAGGGATTTATATAGAGATGTGATGTTGGAGAACTACAGCAACATGGTCTCACTGGGTTTTTG  
 CATTATCAGCCAGAAGCGTTCTCTTTATTGGAGAAAGGAAAGAGCCCTGGAAGATTTTGGGGATGAG  
 ACAAGAGGACCTTCCCAGACATGCAGTCGAGGTGTAGACCAAGAAGTTATTACCAAAAAATGGCATT  
 TTGAGAGAGAAAAGCCCAATTGGAAAATGAGAATTTGTA AAAACACAGCCTTGACTGTTTATGTTT  
 TAGAGGTGACTGGGAAGGCAACTCAGTTTCAAACACTTCAAGATAATCAAGAGGAATGCTTCAAGCAG  
 GTGATACGCACCTGTGAAAAAGGCCACTTTTAAACCAGCATACAGTGTTAATCTACACCAGAGACTTA  
 ATACAGGAGACAACTGAATGAATTTAAGAAGTGGGAAAGCCTTTATTTCTGGTTCAGATCATACTCA  
 ACATCAGTTAATTCACACAAGTGAGAAAATCTGTGGAGATAAAGAATGTGGGAATACCTTCTTCTGAT  
 TCAGAAGTTATCAATATCAGACAGTTCACACTGTTAAGAAAACATATGAATGTAAGAATGTGGGAAGT  
 CTTTTAGTTTACGTTTCGAGTCTTACTGGTCATAAGAGAATTCATACCGGTGAGAAACCTTTTAAATGTAA  
 GGATTGTGGGAAAGCCTTTAGATTTCAATCACAACTTAGTGTCCATAAGCGAATTCATACTGGTGAGAAA  
 TCTTATGAATGTAAGGAATGTGGGAAGGCCCTTTAGTTGTGGCTCAGATCTTACTCGACATCAGAGAATTC  
 ATACTGGTAAAAACCTATGAATGTAATGAATGTAGAAAGGCCCTTTAGTCAGCGATCACATCTTATTA  
 ACATCAGAGAATTCACACTGGTAAAAACCTTATGAATGTAAGGAGTGTGGGAAAGCTTTTACTCGTGG  
 TCACACCTAACTCAGCATCAGAGAATTCATACTGGTGAAGAAATTCATGAGTGAAGGAATGTGGAAAAG  
 CCTTTATTCGTGGTTCAAATCTTGCTCAACATCAGAATGTTTATGTTGGTAGGAAACCTTATAAAATGTGA  
 GAAATGTGGGAAAGCCTATATTTGGAGCTCACACCTTGCTCGACATCAGCGAATTCATACTGGCAGGAAA  
 CCTTATGAATGTAAGCAATGCGGGAAGACTTTTACTTGGGCTTCGTATCTTGTCAACATGAGAAAATTC  
 ACAATGAGAGGAAATCCTATGAATGTAAGGAATGTGGAAAGACCTTTCTCATGGCTCAGAGTTTAAATCG  
 ACATCAGAAAATTCATACTGGTGAAGAAAATGTAATGTAAGGAATGTGGAAAGACCTTTTCTGTTGGT  
 TCAGAATTAATCGACACCAGAAAATTCATACTGGAAAGAGGCCATATGAATGTGAAGAATGTGGAAAAG  
 CCTTCTCTGGGTTCACACTTACTCGACATCAGAGAATGCATACTGGTGAAGAACCTTACGTATGTA  
 AGAATGTGGGAAATCTTTATCTGGGTTACAGCTTACAGACATAAGAAAATTCATACTGATGCAGAA  
 CCTTATGGATGCAAGAAAAGTAGCCACATCTTTAGTCACCATTATTTTACTGAACAAAAATTCATA  
 ATAGTGCAAACTCTGTGAATGGACAGACTATGGGAACACCTTTAGTCATGAGTCAAACCTTGTCTCAACA  
 CCAGAATATTTACACTTTTGAGAAATCCTATGAATTTAAGATTTTGAAGAACATTTTCTTCAAGCTCT  
 CACTTCATTTCACTCTTG

**ACGCGT**ACGCGGCCGCTCGAG – GFP Tag – GTTTAA

**Protein Sequence:**

>RG234622 representing NM\_001242801  
 Red=Cloning site Green=Tags(s)

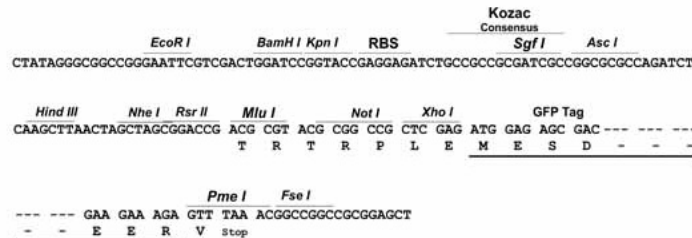
MAHLMFRDVAVDFSQEWECLDLEQRDLRYDVMLENYSNMVSLGFCIYQPEAFSLLEKKGEPWKILRDE  
 TRGPCPDMQSRQTKLLPKNGIFEREIAQLEIMRICKNHSLDCLCFRGDWEGNTQFQTLQDNQEECFKQ  
 VIRTCEKRPTFNQHTVFNLHQRLNTGDKLNEFKELGKAFISGSDHTQHQLIHTSEKFCGDKCEGNTFLPD  
 SEVIQYQTVHTVKKTYECKEKGKSFSLRSSLTGHKRIHTGKPFKCKDCGKAFRFSQSLSVHKRIHTGK  
 SYECKEKGKAFSCGSDLTRHQRIHTGKPYECNECRKAFSQRSHLIKHQRIHTGKPYECKEKGKAFTRG  
 SHLTQHQRHTGKESHECKEKGKAFIRGSNLAQHQNHVHGRKPYKCEKCGKAYIWSHLARHQRIHTGRK  
 PYECKQCKTFTWASYLAQHEKIHNERKSYECKEKGKFTLHGSEFNHRHQIHTGERNYECKEKGKFTFRG  
 SELNRHQIHTGKRPYECECGKAFLWGSQTLTRHQRMHTGEEPYYCKEKGKSF IWGSQTLTRHKKIHTDAE  
 PYGCKKSSHIFSHSYFTEQKIHNANLCEWTDYGNFTHSNFAQHQNIYTFEKSYEFKDFEKAFFSSS  
 HFISLL

**TRTRPLE** – GFP Tag – V

Restriction Sites: SgfI-MluI

Cloning Scheme:

Cloning sites used for ORF Shuttling:



ACCN: NM\_001242801

ORF Size: 1908 bp

OTI Disclaimer: The molecular sequence of this clone aligns with the gene accession number as a point of reference only. However, individual transcript sequences of the same gene can differ through naturally occurring variations (e.g. polymorphisms), each with its own valid existence. This clone is substantially in agreement with the reference, but a complete review of all prevailing variants is recommended prior to use. [More info](#)

OTI Annotation: This clone was engineered to express the complete ORF with an expression tag. Expression varies depending on the nature of the gene.

Components: The ORF clone is ion-exchange column purified and shipped in a 2D barcoded Matrix tube containing 10ug of transfection-ready, dried plasmid DNA (reconstitute with 100 ul of water).

- Reconstitution Method:
1. Centrifuge at 5,000xg for 5min.
  2. Carefully open the tube and add 100ul of sterile water to dissolve the DNA.
  3. Close the tube and incubate for 10 minutes at room temperature.
  4. Briefly vortex the tube and then do a quick spin (less than 5000xg) to concentrate the liquid at the bottom.
  5. Store the suspended plasmid at -20°C. The DNA is stable for at least one year from date of shipping when stored at -20°C.

RefSeq: [NM\\_001242801.1](#), [NP\\_001229730.1](#)

RefSeq Size: 2361 bp

RefSeq ORF: 1911 bp

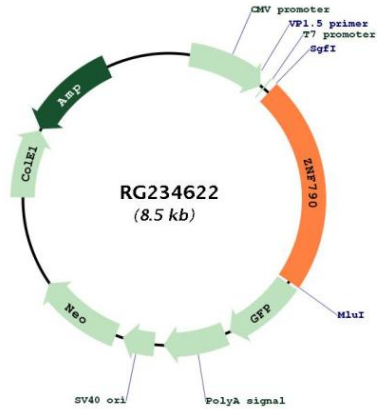
Locus ID: 388536

UniProt ID: [Q6PG37](#)

Cytogenetics: 19q13.12

Gene Summary: May be involved in transcriptional regulation.[UniProtKB/Swiss-Prot Function]

**Product images:**



Circular map for RG234622