

## Product datasheet for **RG234618**

### **TNIP1 (NM\_001252392) Human Tagged ORF Clone**

#### **Product data:**

Product Type:	Expression Plasmids
Product Name:	TNIP1 (NM_001252392) Human Tagged ORF Clone
Tag:	TurboGFP
Symbol:	TNIP1
Synonyms:	ABIN-1; NAF1; nip40-1; VAN
Mammalian Cell Selection:	Neomycin
Vector:	pCMV6-AC-GFP (PS100010)
E. coli Selection:	Ampicillin (100 ug/mL)



[View online »](#)

**ORF Nucleotide Sequence:**

>RG234618 representing NM\_001252392  
 Red=Cloning site Blue=ORF Green=Tags(s)

TTTTGTAATACGACTCACTATAGGGCGGCCGGAATTCGTCGACTGGATCCGGTACCGAGGAGATCTGCC  
 GCC**CGGATCGCC**

ATGGAAGGGAGAGACCCTACCGGATCTACGACCTGGGGCAGCGTGCCCTCAGGAGAGGCATCCGCAG  
 CTTTTGAGCGCCTAGTGAAGGAGAATCCCGGCTGAAGGAAAAATGCAAGGGATAAAGATGTTAGGGGA  
 GCTTTTGAAGAGTCCCAGATGGAAGCGACCAGGCTCCGCGCAGAAGGCAGAGGAGCTAGTGAAGGACAAC  
 GAGCTGCTCCCACCACCTTCTCCCTCCTTGGGCTCCTTCGACCCCTGGCTGAGCTCACAGGAAAGGACT  
 CAAATGTCACAGCATCTCCACAGCCCCTGCATGCCCCAGTGACAAGCCAGCACCAGTCCAGAAGCCTCC  
 ATCCAGTGGCACCTCCTCTGAATTTGAAGTGGTCACTCCTGAGGAGCAGAATTCACCAGAGAGCAGCAGC  
 CATGCCAATGCGATGGCGCTGGGCCCTGCCCGTGAGGACGGCAACCTGATGCTGCACCTGCAGCGCC  
 TGGAGACCACGCTGAGTGTGTGCGGAGGAGCCGGACCAGGCCAGCTTTCACCCACCTGGGCCGCAT  
 GGCCCTGGAGTTC AACCGACTGGCATCCAAGGTGCACAAGAATGAGCAGCGCACCTCCATTTGTCAGACC  
 CTGTGTGAGCAGCTTCGGAAGGAGAACGAGGCTCTGAAGGCCAAGTTGGATAAAGGCCTGGAACAGCGGG  
 ATCAGGCTGCCGAGAGGCTGCCGGAGGAAAAATTTGGAGCTCAAGAAGTTGTTGATGAGCAATGGCAACA  
 AGAGGGTGCCTCTGGCGGCCAGGCTCACCGAAGATGGAAGGGACAGGCAAGAAGGCAGTGGCTGGACAG  
 CAGCAGGCTAGTGTGACGGCAGGTAAGGTCCCAGAGGTGGTGGCCTTGGGCGCAGCCGAGAAGAAGTGA  
 AGATGCTGGAGCAGCAGCGCAGTGAAGTGCCTGGAAGTGAACAAGCAGTGGGACCAGCATTTCGGTCCAT  
 GAAGCAGCAGTATGAGCAGAAGTCACTGAGCTGCGTCAAGAGCTGGCTGATTTGAGAAGCAGGTGACT  
 GACCTGGAGGCCGAGCGGAGCAGAAGCAGCGTGAATTTGACCGCAAGCTCCTCTGGCCAAAGTCCAAGA  
 TTGAAATGGAGGAGACCACAAGGAGCAGCTGACAGCAGAGGCCAAGGAGCTGCGCCAAAAGGTCAGTA  
 CCTGCAGGATCAGCTGAGCCCACTCACCCGACAGCGTGAGTACCAGGAAAAGGAGATCCAGCGGCTCAAC  
 AAGGCCCTGGAGGAAGCACTGAGCATCCAAACCCGCCATCATCTCCACCAACAGCATTGGGAGCCAG  
 AAGGAGCAGGGCCCTCCTAAGGAAACAGGAGCTGGTCACGCAGAATGAGTTGCTGAAACAGCAGGTGAA  
 GATCTTCGAGGAGGACTTCCAGAGGGAGCGCAGTATCGTGAGCGCATGAATGAGGAGAAGGAAAGAGCTG  
 AAGAAGCAAGTGGAGAAGCTGCAGGCCAGGTACCCCTGTCAAATGCCAGCTAAAAGCATTCAAAGATG  
 AGGAGAAGGCAAGAGAAGCCCTCAGACAGCAGAAGAGGAAAGCAAAGGCCTCAGGAGAGCGTTACCATGT  
 GGAGCCCCACCCAGAATCTCTGCGGGGCTACCCCTACGCCTACCCGCCATGCCAGCCATGGTGCCA  
 CACCATGGCTTCGAGGACTGGTCCAGATCCGCTACCCCTCCCCCATGGCCATGGAGACCCGCCCC  
 CACTCCCCAACTCGCGCCTTCCATCTGCCGGAATACACTGGCGTCTACCCTGTGGAGGGGTTGAAA  
 TCCAAATCAGAGCTCCAAGTGTGACCCCTCCACAGCCAGGCCTACAGAACCAGAGCCAGCTGATCTC  
 AGATTGCCAAGAAAC

**ACGCGT**ACGCGGCCGCTCGAG – GFP Tag – GTTTAA

**Protein Sequence:**

>RG234618 representing NM\_001252392  
 Red=Cloning site Green=Tags(s)

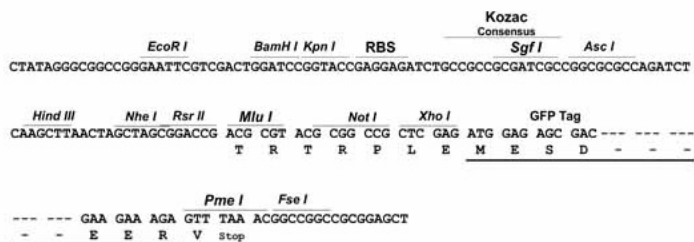
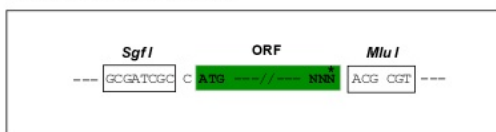
MEGRGPYRIYDPGGSVPSGEASAAFERLVKENSRLKEKMQGIKMLGELLEESQMEATRLRQKAEELVKDN  
 ELLPPSPSLGSLDPLAELTGKDSNVTASPTAPACPSDKPAPVQKPPSSGTSSEFEVVTPEEQNSPSSS  
 HANAMALGPLPREDGNLMLHLQRLLETTLSVCAEEDPHGQLFTHLGRMALEFNRLASKVHKNEQRTSILQT  
 LCEQLRKENEALKAKLDKGLEQRDQAAERLREENLELKKLLMSNGNKEGASGRPGSPKMEGTGKKAVAGQ  
 QQASVTAGKVPEVVALGAAEKVKMLEQQRSELLEVNKQWDQHFRSMKQQYEQKITELRQKLADLQKQVT  
 DLEAEREQKQRDFDRKLLLAKSKIEMEETDKEQLTAEAKELRQKVYLDQQLSPLTRQREYQEKIQRNLN  
 KALEEALSIQTPSPSPPTAFGSPEGAGALLRKQELVTQNELLKQVKIFEEDFQRERSDRERMNEEKEEL  
 KKQVEKLAQVTLNAQLKAFKDEEKAREALRQQRKAKASGERYHVEPHPEHLGAYPYAYPPMPAMVP  
 HHGFEDWSQIRYPPPMAMEHPPPLPNSRLFHLPEYTWRLPCGGVRNPQSSQVMDPPTARTEPEPADL  
 RLPRN

**TRTRPLE** – GFP Tag – V

Restriction Sites: SgfI-MluI

Cloning Scheme:

Cloning sites used for ORF Shutting:



ACCN: NM\_001252392

ORF Size: 1905 bp

OTI Disclaimer: The molecular sequence of this clone aligns with the gene accession number as a point of reference only. However, individual transcript sequences of the same gene can differ through naturally occurring variations (e.g. polymorphisms), each with its own valid existence. This clone is substantially in agreement with the reference, but a complete review of all prevailing variants is recommended prior to use. [More info](#)

OTI Annotation: This clone was engineered to express the complete ORF with an expression tag. Expression varies depending on the nature of the gene.

Components: The ORF clone is ion-exchange column purified and shipped in a 2D barcoded Matrix tube containing 10ug of transfection-ready, dried plasmid DNA (reconstitute with 100 ul of water).

Reconstitution Method:

1. Centrifuge at 5,000xg for 5min.
2. Carefully open the tube and add 100ul of sterile water to dissolve the DNA.
3. Close the tube and incubate for 10 minutes at room temperature.
4. Briefly vortex the tube and then do a quick spin (less than 5000xg) to concentrate the liquid at the bottom.
5. Store the suspended plasmid at -20°C. The DNA is stable for at least one year from date of shipping when stored at -20°C.

RefSeq: [NM\\_001252392.2](#)

RefSeq Size: 2756 bp

RefSeq ORF: 1908 bp

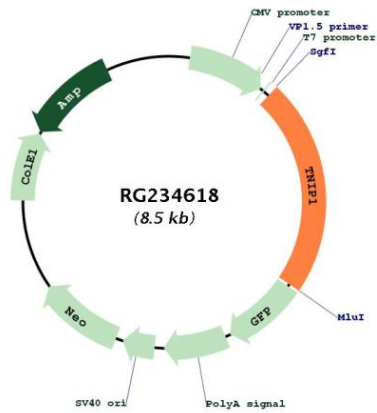
Locus ID: 10318

UniProt ID: [Q15025](#)

**Cytogenetics:** 5q33.1

**Gene Summary:** This gene encodes an A20-binding protein which plays a role in autoimmunity and tissue homeostasis through the regulation of nuclear factor kappa-B activation. Mutations in this gene have been associated with psoriatic arthritis, rheumatoid arthritis, and systemic lupus erythematosus. Multiple transcript variants encoding different isoforms have been found for this gene. [provided by RefSeq, Nov 2011]

**Product images:**



Circular map for RG234618