

Product datasheet for **RG234617**

ZNF568 (NM_001204838) Human Tagged ORF Clone

Product data:

Product Type:	Expression Plasmids
Product Name:	ZNF568 (NM_001204838) Human Tagged ORF Clone
Tag:	TurboGFP
Symbol:	ZNF568
Synonyms:	ZFP568
Mammalian Cell Selection:	Neomycin
Vector:	pCMV6-AC-GFP (PS100010)
E. coli Selection:	Ampicillin (100 ug/mL)



[View online »](#)

ORF Nucleotide Sequence:

>RG234617 representing NM_001204838
 Red=Cloning site Blue=ORF Green=Tags(s)

TTTTGTAATACGACTCACTATAGGGCGGCCGGAATTCGTCGACTGGATCCGGTACCGAGGAGATCTGCC
 GCC**CGCATCGCC**

ATGACATCTCAATCTTCAGTGATCAGCAATAGCTGTGTGACAATGGAGCGTTTGAGCCACATGATGGAAA
 GGAAAGCTTGGTGTCTCAAGAGCTGCCCTTCCGAGGAAGAAGAGGATACAACAGGCCCTCTGAAAC
 AGTGACATTTAAGGATGTGGCTGTTGACCTTACCAGGAGGAGTGGGAGCAAATGAAACCTGCTCAAAGA
 AACTTGTATCGAGATGTGATGCTGGAGAACTACAGCAACCTAGTCACAGTGGGCTGTCAAGTCACCAAAC
 CGGATGTGATATTCAAGTTGGAGCAAGAAGAGGAGCCCTGGGTGATGGAGGAAGAATGTTTGGGAGGCA
 CTGTCCAGAACCCAGAAGAGGAGAGAAGTGTGTGCGTCTGAAGTGTGGCGGAGGGCTGAAGTTCAAA
 GATGTGGTCATTTACTTCTCTCAAAGGAGTGGGAATGCTTGCCTCTGCTCAGAAGGATTTGTACCGAG
 ATGTAATGTTGGAAAATTACGGCAACCTGGTCTTACTGGGGCTTCTGATACTAAGCCAAATGTGATCTC
 CTTATTGGAGCAGAAGAAAGAGCCCTGGATGGTTAAGAGGAAGGAGACAAAAGAATGGTGTCCGATTGG
 GAGTTTGGAAAGAAAACCAAGAATTTATCTCAAAGGAAAACATTTATGAAATTAGATCACCACAACAGG
 AGAAGGCCAGAGTTATCAGAGAAATCAGATGCCAGGTGGAGAGACAACAGGGTATCAGGAGGGACATTT
 CAGACCAGCTGTAATACCATTTACTTCCATGCAGTGCACAGCCCATAGAGAATATCAGTGGCTTCATACT
 GGAGAGAAATCCTGTGAATGCAGGAAATGTAAGAATGCTTTTAGGTACCAGTCAATGCTTATTCAACATG
 AAATAATTCATAATAAGGAAAAAGAACCTGAATGTGGAGAATGTAGGAAAATCTTAAATAGTGGATCAGA
 CTTGATTAAGCATCAGACGCTTCATGAAAGCAAAAACATAGTAAAAATAACAAATGTGCCTTTAATCAT
 GATTCTGGAATTACTCAACCTCAGAGCATTAACTACTGGAGAGAAACCTCATAAATGTAAGGAATGTGGGA
 AAGCCTTTCGTTCCAGCTCACAATTAAGTCAGCATCAGAGGATGCATCTTGGTGAGAAACCCATATAAGTG
 TAGGGAGTGTGGGAAAGCCTTCCATCCACTGCACAGCTTAATCTACATCAGAGGATCCATACTGATGAG
 AAATACTATGAAAGTAAGGCGTGTGGAAAGCCTTTACCCGTCCTCACACCTTTTTCGACATCAAAGAA
 TCCATACGGGTGAGAAACCCATAAATGTAAGGAATGTGGAAAGGCTTTTCGTTATGACACACAGCTGAG
 CCTTCATCAGATAATCCATACTGGTGAAGACGCTATGAATGCAGGGAGTGTGGAAAGGTGTACAGTTGT
 GCCTCACAGCTGAGTCTACATCAAAGAATTCATACTGGTGAAGAACCCATGAATGTAAGGAATGTGGGA
 AAGCCTTTATCTCTGATTACATCTTATTCGACATCAGAGTGTCCATACTGGGGAGAAACCCGTAAAGTG
 TAAGGAATGTGGGAAGTCTTTCGTCGTGGCTCAGAACTACCCGACATCAGAGAGCTCATACTGGTGAA
 AAACCCTATGAGTGAAGGAATGTGAAAGGCCTTACTTGTAGCACAGAACTTGTTCGACATCAAAAAG
 TTCACACTGGGGAGAGACCCATAAGTGTAAAGGAATGTGGGAAGGCTTTCATTGAAAGGTGAGAAGTAC
 ACATCATGAGAGAAGTCACTGGTGAAGAACCTACGAGTGAAGGAGTGTGGGAAGCCTTTGGTGGT
 GGCTCAGAACTTAGT

ACGCGTACGCGGCCGCTCGAG – GFP Tag – GTTTAA

Protein Sequence:

>RG234617 representing NM_001204838
 Red=Cloning site Green=Tags(s)

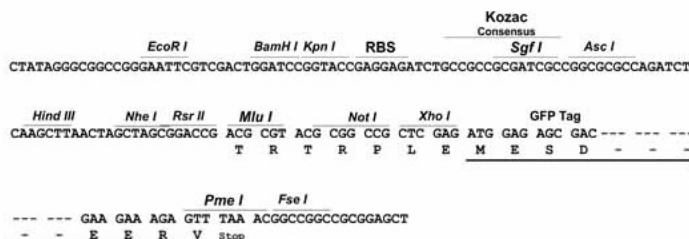
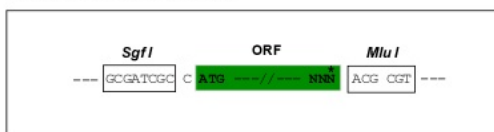
MTSQSSVISNSCVTMRLSHMMERKAWCSQESALSEEEEDTTRPLETVTFKDVAVDLTQEEWEQMKPAQR
 NLYRDVMLENYSNLVTVGCQVTKPDVIFKLEQEEEPWMEEMFGRHCPEPRRGENCCASEVMAEGLKFK
 DVVIYFSQKEWECLHSAQKDLYRDVMLENYGNLVLGLSDTKPNVISLLEQKKEPMMVKRKETKEWCPDW
 EFGRETKNLSPKENIYERISPPQEKARVIREIRCQVERQQGHQEGHFRPAVIPFTSMQCTAHREYQWLHT
 GEKSCECRKCKNAFRYQSCPIQHEIIHNKEKEPECGEKRKIFNSGSDLIKHQTLHESKKHSENNKCAFNH
 DSGITQPQSINTGKPHKCKEKGAFRSSSQISQHQRMHLGKPKYKRECGKAFPPSTAQLNLHQRIHTDE
 KYYESKACGKAFTRPShLFRHQRIHTGKPHKCKEKGAFRYDTQLSLHQIHTGERRYECRECGKYVSC
 ASQLSLHQRIHTGKPHKCKEKGAFISDSLIRHQSVHTGKPKCKEKGKSFRRGSELTRHQRAHTGE
 KPYECKEKEKAFSTELVRHQKVHTGERPHKCKEKGAFIRRESELTHHERSHTGKPYECKEKGKPFGG
 GSELS

TRTRPLE – GFP Tag – V

Restriction Sites: SgfI-MluI

Cloning Scheme:

Cloning sites used for ORF Shutting:



ACCN: NM_001204838

ORF Size: 1905 bp

OTI Disclaimer: The molecular sequence of this clone aligns with the gene accession number as a point of reference only. However, individual transcript sequences of the same gene can differ through naturally occurring variations (e.g. polymorphisms), each with its own valid existence. This clone is substantially in agreement with the reference, but a complete review of all prevailing variants is recommended prior to use. [More info](#)

OTI Annotation: This clone was engineered to express the complete ORF with an expression tag. Expression varies depending on the nature of the gene.

Components: The ORF clone is ion-exchange column purified and shipped in a 2D barcoded Matrix tube containing 10ug of transfection-ready, dried plasmid DNA (reconstitute with 100 ul of water).

Reconstitution Method:

1. Centrifuge at 5,000xg for 5min.
2. Carefully open the tube and add 100ul of sterile water to dissolve the DNA.
3. Close the tube and incubate for 10 minutes at room temperature.
4. Briefly vortex the tube and then do a quick spin (less than 5000xg) to concentrate the liquid at the bottom.
5. Store the suspended plasmid at -20°C. The DNA is stable for at least one year from date of shipping when stored at -20°C.

RefSeq: [NM_001204838.1](#), [NP_001191767.1](#)

RefSeq Size: 2759 bp

RefSeq ORF: 1908 bp

Locus ID: 374900

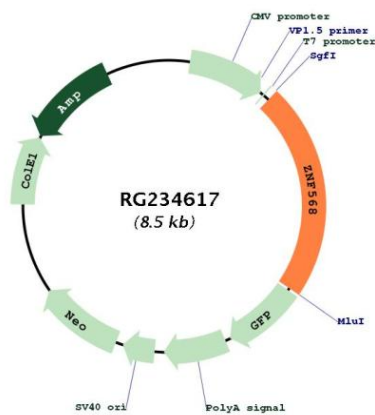
UniProt ID: [Q3ZCX4](#)

Cytogenetics: 19q13.12

Protein Families: Transcription Factors

Gene Summary: Has transcriptional repression activity, partially through the recruitment of the corepressor TRIM28 but has also repression activity independently of this interaction. Essential during embryonic development, where it acts as direct repressor of a placental-specific transcript of IGF2 in early development and regulates convergent extension movements required for axis elongation and tissue morphogenesis in all germ layers. Also important for normal morphogenesis of extraembryonic tissues including the yolk sac, extraembryonic mesoderm and placenta. May enhance proliferation or maintenance of neural stem cells. [UniProtKB/Swiss-Prot Function]

Product images:



Circular map for RG234617