

Product datasheet for **RG234616**

ASB2 (NM_001202429) Human Tagged ORF Clone

Product data:

Product Type:	Expression Plasmids
Product Name:	ASB2 (NM_001202429) Human Tagged ORF Clone
Tag:	TurboGFP
Symbol:	ASB2
Synonyms:	ASB-2
Mammalian Cell Selection:	Neomycin
Vector:	pCMV6-AC-GFP (PS100010)
E. coli Selection:	Ampicillin (100 ug/mL)



[View online »](#)

ORF Nucleotide Sequence:

>RG234616 representing NM_001202429
 Red=Cloning site Blue=ORF Green=Tags(s)

TTTTGTAATACGACTCACTATAGGGCGGCCGGAATTCGTCGACTGGATCCGGTACCGAGGAGATCTGCC
 GCC**GCGATCGCC**

ATGGCCACGCAGATCAGCACTCGGGCAGCCAGTGTACCATTGGCAGGAGGAGTACAGCCTGTACAGCA
 GCCTGAGCGAGGATGAACTGGTGCAGATGGCCATCGAGCAGAGCCTAGCGGACAAGACAAGGGGCCCAAC
 CACTGCTGAGGCCACCGCTCTGCATGTACCAACCGCAAACCTGCCATTCTACCCATGGACCAGGTCC
 ACTGCACCTCCTGAGAGTTCCGCGGCCCGGGCCCAATGGGCTTGTTCGAAGGGGTATGCAGAAAATACA
 GCAGCAGCTTGTCAAGACCTCCAGCTGGCGCCTGCGGACCCCTTGATAAAGGCCATCAAGGATGGCGA
 TGAAGAGGCTTGAAGACCATGATCAAGGAAGGAAGAATCTCGCAGAGCCCAACAAGGAGGGCTGGCTG
 CCGCTGCACGAGGCCGATACTATGGCCAGGTGGGCTGCCTGAAAGTCTGCAGCGAGCGTACCCAGGGA
 CCATCGACCAGCGCACCTGCAGGAGGAAACAGCCGTTTACTTGGCAACGTGCAGGGGCCACCTGGACTG
 TCTCCTGTCACTGCTCCAAGCAGGGCAGAGCCGGACATCTCAACAAATCCCGAGAGACACCGCTCTAC
 AAAGCCTGCGAGCGCAAGAACCGCGGAGGCCGTGAAGATTCGGTGCAGCACAATGCAGACACCAACCACC
 GCTGCAACCGCGGCTGGACCGCTCTGCACGAGTCTGTGTCTCGCAATGACCTGGAGGTATGCAGATCCT
 GGTGAGCGGAGGAGCCAAGGTGGAATCCAAGAACGCCTACGGCATCACCCCTTGTTCGTGGCCGCCAG
 AGTGGACAGTTGGAGGCCCTTGGAGTTCTTAGCCAAGTACGGTGTGCATCAACACGCAGGCCAGCGACA
 ACGCGTCTGCCCTCTACGAGGCCGCAAGAATGAGCATGAGGAGGTGGTGGAGTTTCTGTGTACAGGG
 TGCCGACGCCAACAGACCAACAAGGACGGCTTGCTCCGCTGCACATCGCTCCAAGAAGGGCAACTAC
 AGGATCGTGCAGATGCTGCTGCCGTGACCAGCCGACGCGCATACGCCGTAGCGGCGTTCAGTCCGCTGC
 ACCTGGCGGCCGAGCGCAACCACGACGAGGTGCTGGAGGCGCTGCTGAGCGCGCGCTTCCAGTGAACAC
 GCCGCTGGCCCCGAGCGCGCGCCTCTACGAAGACCGCGCAGCTCCGCGCTGTACTTCGCGGTGGTC
 AACAAACAGTGTACGCCACCGAGCTGCTGCTGCAACACGGCGCCGACCCCAACCGCGACGTCTACAGCC
 CCTTGCTCGTGGCCATCCGCCACGGCTGCCTGCGCACAATGCAGCTGCTGCTGGACCACGGCGCAACAT
 CGACGCCATATCGCCACGCACCCACCGCCTTCCCCGCCACCATCATGTTGCCATGAAGTGCCTGTCTG
 CTGCTCAAGTTCTCATGGACCTGGGCTGCGACGGCGAGCCCTGCTTCTCATGCCTCTACGGCAACGGCC
 CGCACCCCGCGCCCGCAGCCCTCCAGCAGGTTCAACGACGCGCCCGCGGCCGACAAGGAGCCAGCGT
 GGTGCAGTTCTGTGAGTTCGTATCTGCCCCAGAGGTGAGCCGCTGGCGGGGCCATCATCGATGTCTCT
 CTGGACTACGTGGCAACGTGCAGCTCTGCTCGCGGCTGAAGGAACACATCGACAGCTTTGAGGACTGGG
 CCGTCATCAAGGAGAAGGCAGAACCTCCAAGACCTCTGGCTCACCTTTGCCGACTGCGGGTTCGAAAGGC
 CATTGGGAAATACCGTATAAAACTCTAGACACCTTCCGCTCCAGGCAGGCTGATTAGATACCTGAAA
 TACGAGAACACCCAG

AG**GCGACCG**ACGCGTACGCGGCCGCTCGAG – GFP Tag – GTTTAA

Protein Sequence:

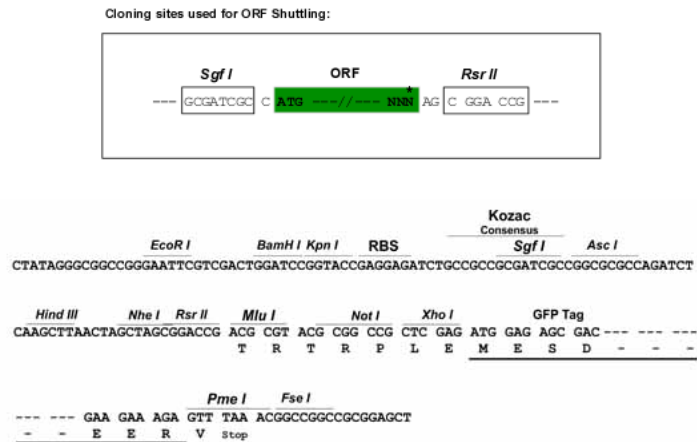
>RG234616 representing NM_001202429
 Red=Cloning site Green=Tags(s)

MATQISTRGSQCTIGQEEYSLSSEDELVQMAIEQSLADKTRGPTTAEATASACTNRQPAHFYPWTRS
 TAPPESSPARAPMGLFQGVMMQKYSSSLFKTSQLAPADPLIKAIKDGDEEALKTKMIKEGKNLAEPNKEGWL
 PLHEAAYYGQVGLKVLQRAYPGTIDQRTLQEETAVYLATCRGHLDCLLSLLQAGAEPDISNKSRETPLY
 KACERKNAEAVKILVQHNADTNHRCNRGWTALHESVSRNDLEVMQILVSGGAKVESKNAYGITPLFVAAQ
 SGQLEALRFLAKYGADINTQASDNASALYEACKNEHEEVVEFLLSQGADANKTNKDGLLPLHIASKKNGY
 RIVQMLLPVTSRTRIRRSVSPHLAAERNHDEVLEALLSARFDVNTPLAPERARLYEDRRSSALYFAVV
 NNNVYATELLQHGADPNRDVISPLLVAIRHGCLRTMQLLLDHGANIDAYIATHPTAFPATIMFAMKCLS
 LLKFLMDLGCDEPCFSCLYGNPHPPAPQPSSRFNDAPAADKEPSVVFCEVSAPEVSRWAGPIIDVL
 LDYVGNVQLCSRLEKIHDSFEDWAVIKEKAEPPLAHLRRLRVRKAIGKYRIKLLDTPLPGRLLIRYLK
 YENTQ

SGP**TRRRLE** – GFP Tag – V

Restriction Sites: SgfI-RsrII

Cloning Scheme:



ACCN: NM_001202429

ORF Size: 1905 bp

OTI Disclaimer: Due to the inherent nature of this plasmid, standard methods to replicate additional amounts of DNA in E. coli are highly likely to result in mutations and/or rearrangements. Therefore, OriGene does not guarantee the capability to replicate this plasmid DNA. Additional amounts of DNA can be purchased from OriGene with batch-specific, full-sequence verification at a reduced cost. Please contact our customer care team at custsupport@origene.com or by calling 301.340.3188 option 3 for pricing and delivery.

The molecular sequence of this clone aligns with the gene accession number as a point of reference only. However, individual transcript sequences of the same gene can differ through naturally occurring variations (e.g. polymorphisms), each with its own valid existence. This clone is substantially in agreement with the reference, but a complete review of all prevailing variants is recommended prior to use. [More info](#)

OTI Annotation: This clone was engineered to express the complete ORF with an expression tag. Expression varies depending on the nature of the gene.

Components: The ORF clone is ion-exchange column purified and shipped in a 2D barcoded Matrix tube containing 10ug of transfection-ready, dried plasmid DNA (reconstitute with 100 ul of water).

Reconstitution Method:

1. Centrifuge at 5,000xg for 5min.
2. Carefully open the tube and add 100ul of sterile water to dissolve the DNA.
3. Close the tube and incubate for 10 minutes at room temperature.
4. Briefly vortex the tube and then do a quick spin (less than 5000xg) to concentrate the liquid at the bottom.
5. Store the suspended plasmid at -20°C. The DNA is stable for at least one year from date of shipping when stored at -20°C.

RefSeq: [NM_001202429.2](#)

RefSeq Size: 2781 bp

RefSeq ORF: 1908 bp

Locus ID: 51676

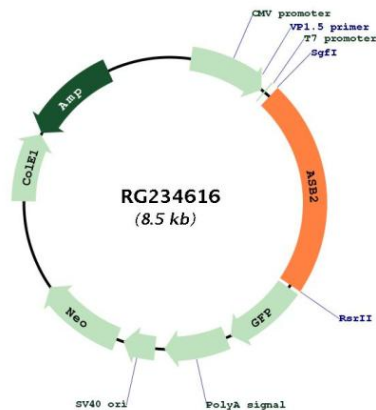
UniProt ID: [Q96Q27](#)

Cytogenetics: 14q32.12

Protein Families: Druggable Genome

Gene Summary: This gene encodes a member of the ankyrin repeat and SOCS box-containing (ASB) protein family. These proteins play a role in protein degradation by coupling suppressor of cytokine signalling (SOCS) proteins with the elongin BC complex. The encoded protein is a subunit of a multimeric E3 ubiquitin ligase complex that mediates the degradation of actin-binding proteins. This gene plays a role in retinoic acid-induced growth inhibition and differentiation of myeloid leukemia cells. Alternatively spliced transcript variants encoding multiple isoforms have been observed for this gene. [provided by RefSeq, Jan 2011]

Product images:



Circular map for RG234616