

## Product datasheet for **RG234529**

### CD6 (NM\_001254750) Human Tagged ORF Clone

#### Product data:

Product Type:	Expression Plasmids
Product Name:	CD6 (NM_001254750) Human Tagged ORF Clone
Tag:	TurboGFP
Symbol:	CD6
Synonyms:	TP120
Mammalian Cell Selection:	Neomycin
Vector:	pCMV6-AC-GFP (PS100010)
E. coli Selection:	Ampicillin (100 ug/mL)



[View online »](#)

**ORF Nucleotide Sequence:**

>RG234529 representing NM\_001254750  
 Red=Cloning site Blue=ORF Green=Tags(s)

TTTTGTAATACGACTCACTATAGGGCGGCCGGAATTCGTCGACTGGATCCGGTACCGAGGAGATCTGCC  
 GCC**CGGATCGCC**

ATGTGGCTCTTCTTCGGGATCACTGGATTGCTGACGGCAGCCCTCTCAGGTCATCCATCTCCAGCCCCAC  
 CTGACCAGCTCAACACCAGCAGTGCAGAGAGTGAGCTCTGGGAGCCAGGGGAGCGGCTTCCGGTCCGTCT  
 GACAAACGGGAGCAGCAGCTGCAGCGGGACGGTGGAGGTGCGGCTCGAGGCGTCTGGGAGCCCGGTGC  
 GGGGCGCTCTGGGACAGCCGCGCCGCGAGGCCGTGTGCCGAGCACTGGGCTGCGGCGGGCGGAGGCCG  
 CCTCTCAGCTCGCCCCGCGACCCCTGAGCTGCCGCCCGCCTGCAGCCGGGAACACCAGCGTAGCAGC  
 TAATGCCACTCTGGCCGGGGCGCCGCCCTCTGTGCAGCGCGCCGAGTGGCGGCTCTGCGAGGTGGTG  
 GAGCACGCGTGCCGACGACGGGAGGCGGGCCCGTGTCACTGTGCAGAGAACCAGCGGCTGCGCCTGG  
 TGGACGGTGGCGCGCCTGCCCGGCCGCGTGGAGATGCTGGAGCATGGCGAGTGGGGATCAGTGTGCGA  
 TGACACTTGGGACCTGGAGGACGCCACCTGGTGTGCAGGCAACTGGGCTGCGGCTGGGCGTCCAGGCC  
 CTGCCCGGCTTGCACTTACGCCCGGCCGCGGGCTATCCACCGGACCAAGGTGAACTGCTCGGGGGCCG  
 AAGCTTACCTGTGGGACTGCCCGGGGCTGCCAGGACAGCACTACTGCGGCCACAAAGAGGACGCGGGCGC  
 GGTGTGCTCAGAGCACCAGTCTGGCGCCTGACAGGGGGCGTGACCGCTGCGAGGGGCAAGTGGAGGTA  
 CACTTCCGAGGGGTCTGGAACACAGTGTGTGACAGTGAAGTACCCATCGGAGGCCAAGGTGCTCTGCC  
 AGTCTTGGGCTGTGGAAGTGGGTTGAGAGGCCCAAGGGGCTGCCCACTCCTTGTCCGGCAGGATGTA  
 CTACTCATGCAATGGGGAGGAGCTACCCTCTCCAAGTCTCTGGCGTTCAACAACCTCAACCTCTGC  
 AGCCAGTCGCTGGCAGCCAGGGTCTCTGCTCAGTCTCCCGAGTTTGCACAATCTGTCCACTCCGAAG  
 TCCCTGCAAGTGTTCAGACAGTCACTATAGAATCTTCTGTGACAGTAAAAATAGAGAACAAGGAATCTCG  
 GGAGCTAATGCTCCTCATCCCCTCCATCGTCTGGGAATTCTCCTCCTTGGCTCCCTCATCTTCATAGCC  
 TTCATCCTCTTGAGAATTAAGGAAAAATGTTTTTCATGCTGCCATCCAGGTCCAGGCCCGCCCGCCCTG  
 AGGACTCAGACTCTGGCTCGGACTCAGACTATGAGCACTATGACTTACGCGCCAGCCTCTGTGGCCCT  
 GACCACCTTCTACAATCCAGCGGCATCGGGTACAGATGAGGAGGTCCAGCAAAGCAGGTTCCAGATG  
 CCACCCTTGGAGGAAGGACTTGAAGAGTTCATGCCTCCACATCCCACTGCCAACCTGGACTGCA  
 TTACAGACCCGCCATCCCTGGGCCCTCAGTATCACCCGAGGAGCAACAGTGAAGTGCAGCACCTCTCAGG  
 GGAGGATTACTGCAATAGTCCAAAAGCAAGTGCCTCCATGGAACCCCAAGTGTCTTCTCAGAGAGG  
 AGTTCTTCTGGAGCAGCCCCAACTTGGAGCTGGCCGGCACCCAGCCAGCCTTTTCAGGGTCCCCCA  
 GCCCTCAGCCTGACTCCACCGACAACGATGACTACGATGACATCAGCGCAGCC

AC**GGGCCGCT**CGAG - GFP Tag - GTTTAA

**Protein Sequence:**

>RG234529 representing NM\_001254750  
 Red=Cloning site Green=Tags(s)

MWLFFGITGLLTAALSGHPSPAPPDQLNTSSAESELWEPGERLPVRLTNGSSSCSGTVEVRLEASWEPAC  
 GALWDSRAAEAVCRALGCGGAEASQLAPPTPELPPPPAAGNTSVAANATLAGAPALLCSGAEWRLCEVV  
 EHACRSDGRRARVTCENRALRLVDGGGACAGRVEMLHEGEGWGSVCDTWDLEDAHVVCRLGCGWAVQA  
 LPGLHFTPGRGPIHRDQVNCSGAEAYLWDCPGLPGQHYCGHKEDAGAVCSEHQSWRLTGGADRCEGQVEV  
 HFRGVWNTVCDSEWYPSEAKVLQSLGCGTAVERPKGLPHSLSGRMYYSNNGEELTLSNCSWRFNNSNLC  
 SQSLAARVLCASRSLHNLSTPEVPASVQTVTIESSVTVKIENKESRELMMLLIPSIVLGIILLGSLIFIA  
 FILLRIKGYVFMPLIQVQAPPPEDSDSGSDSYEHYDFSAQPPVALTTFYNSQRHRVTDEEVQQSRFQM  
 PPLEEGLLEHASHIPTANPGHCITDPPSLGPQYHPRSNSSESSTSSGEDYCNSPKSKLPPWNPQVFSER  
 SSFLEQPNLELAGTQPAFSGSPSPQPDSTDNDYDDISAA

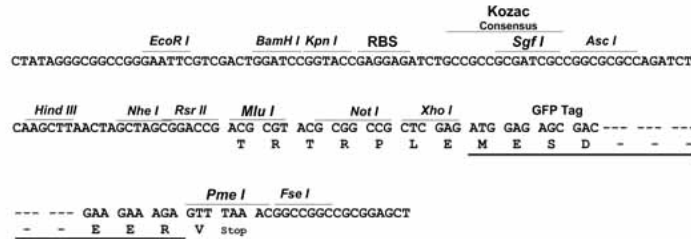
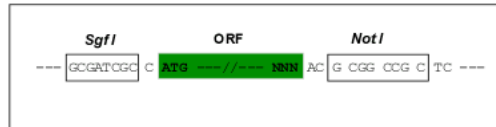
**TRPLE** - GFP Tag - V

**Restriction Sites:**

Sgfl-NotI

**Cloning Scheme:**

Cloning sites used for ORF Shutting:


**ACCN:** NM\_001254750

**ORF Size:** 1803 bp

**OTI Disclaimer:** The molecular sequence of this clone aligns with the gene accession number as a point of reference only. However, individual transcript sequences of the same gene can differ through naturally occurring variations (e.g. polymorphisms), each with its own valid existence. This clone is substantially in agreement with the reference, but a complete review of all prevailing variants is recommended prior to use. [More info](#)

**OTI Annotation:** This clone was engineered to express the complete ORF with an expression tag. Expression varies depending on the nature of the gene.

**Components:** The ORF clone is ion-exchange column purified and shipped in a 2D barcoded Matrix tube containing 10ug of transfection-ready, dried plasmid DNA (reconstitute with 100 ul of water).

**Reconstitution Method:**

1. Centrifuge at 5,000xg for 5min.
2. Carefully open the tube and add 100ul of sterile water to dissolve the DNA.
3. Close the tube and incubate for 10 minutes at room temperature.
4. Briefly vortex the tube and then do a quick spin (less than 5000xg) to concentrate the liquid at the bottom.
5. Store the suspended plasmid at -20°C. The DNA is stable for at least one year from date of shipping when stored at -20°C.

**RefSeq:** [NM\\_001254750.2](#)
**RefSeq Size:** 3101 bp

**RefSeq ORF:** 1806 bp

**Locus ID:** 923

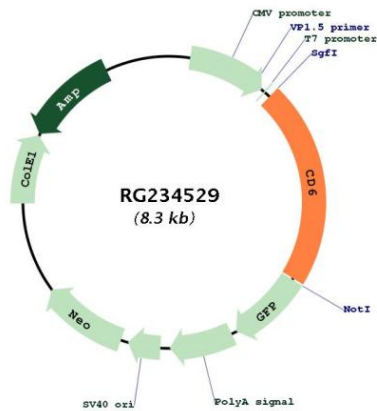
**UniProt ID:** [P30203](#)
**Cytogenetics:** 11q12.2

**Protein Families:** Druggable Genome, Transmembrane

**Protein Pathways:** Cell adhesion molecules (CAMs)

**Gene Summary:** This gene encodes a protein found on the outer membrane of T-lymphocytes as well as some other immune cells. The encoded protein contains three scavenger receptor cysteine-rich (SRCR) domains and a binding site for an activated leukocyte cell adhesion molecule. The gene product is important for continuation of T cell activation. This gene may be associated with susceptibility to multiple sclerosis (PMID: 19525953, 21849685). Multiple transcript variants encoding different isoforms have been found for this gene. [provided by RefSeq, Dec 2011]

**Product images:**



Circular map for RG234529