

Product datasheet for **RG234514**

PARN (NM_001242992) Human Tagged ORF Clone

Product data:

Product Type:	Expression Plasmids
Product Name:	PARN (NM_001242992) Human Tagged ORF Clone
Tag:	TurboGFP
Symbol:	PARN
Synonyms:	DAN; DKCB6; PFBMFT4
Mammalian Cell Selection:	Neomycin
Vector:	pCMV6-AC-GFP (PS100010)
E. coli Selection:	Ampicillin (100 ug/mL)



[View online »](#)

ORF Nucleotide Sequence:

>RG234514 representing NM_001242992
 Red=Cloning site Blue=ORF Green=Tags(s)

TTTTGTAATACGACTCACTATAGGGCGGCCGGAATTCGTCGACTGGATCCGGTACCGAGGAGATCTGCC
 GCC**CGGATCGCC**

ATGGAGATAATCAGGAGCAATTTTAAGAGTAATCTTCACAAAGTGTACCAGGCCATAGAGGAGGCCGACT
 TCTTCGCCATCGATGGGAGTTTTTCAGGAATCAGTGATGGACCTTCAGTCTCTGCATTAACAAATGGTTT
 TGACACTCCAGAAGAGAGATCCTCACCAGATGTCAAATTTGTTTGTGAGAGCTCCAGCATTGACTTTCTA
 GCAAGCCAGGGATTTGATTTTAATAAAGTTTTTCGAAATGGAATTCATATTTAAATCAGGAAGAAGAAA
 GACAGTTAAGAGAGCAGTATGATGAAAAACGTTACAGGCGAATGGTGCAGGAGCTCTGCCTATGTATC
 TCCTAACACTTCAAAATGTCCTGTCACGATTCTGAGGATCAAAAGAAGTTTATTGACCAAGTGGTAGAG
 AAAATAGAGGATTTATTACAAAGTGAAGAAAACAAGAAGTTGGATTTAGAGCCATGTACCGGTTCCAAA
 GAAAATAATTTATCAGACTTTGAGCTGGAAGTATCCGAAAGGCATTTCATGTTGAGACTTTAGAACTGA
 AAAGAAGGAGCGATATATAGTTATCAGCAAAGTAGATGAAGAAGAACGAAAAGAAGAGAGCAGCAGAAA
 CATGCCAAAGAACAGGAGGAGCTGAATGATGCTGTGGGATTTTCTAGAGTCAATCAGCCATTGCTAATT
 CGGAAAAACTTGTATTGGACACAATATGCTCTTGGACGTCATGCACACAGTTTCATCAGTTCTACTGCC
 TCTGCCTGCGGACTTAAGTGAGTTAAAGAGATGACAACATGTGTTTTCCCAGACTCTTGGATACTAAA
 TTGATGGCCAGCACACAACCTTTAAGGATATCATTAAACAACACATCCCTTGCAGGAAATGGAAAAGCGGT
 TAAAAGAGACACCTTTCAACCCTCTAAAGTTGAAAGTGCCGAAGGTTTTCCAAGTTATGACACAGCCTC
 TGAACAACTCCACGAGGAGGCTACGATGCCTACATCACAGGGCTGTGCTTCATCCTCATGGCAATTAC
 CTAGGTTCTTTTCTCAGCCCTCAAAAAATTCATGTGTCTGCCAGATCAAACTCATTGAACCTTTTTTTA
 ACAAGTTATTTCTTATGAGGGTCATGGATATCCCCTATCTAAACTTGAAGGACCAGACTTGCAGCCTAA
 ACGTGATCATGTTCTCCATGTGACATTCGCCAAAGAATGGAAAACCAGCGACCTTTACCAGCTTTTCAGT
 GCCTTTGGTAACATTCAGATATCCTGGATTGATGACACATCAGCATTGTTTCCCTTAGCCAGCCCGAGC
 AAGTAAAGATTGCTGCAATACCAGCAAATATGCAGAAAGCTATCGGATCCAAACCTATGCTGAATATAT
 GGGGAGAAAACAGGAAGAGAAGCAGATCAAAAGAAAGTGGACTGAAGATAGCTGGAAGGAGGCTGACAGC
 AAACGGTTAAACCCCAAGTGCATACCCTACACCCTGCAGAATCACTATTACCGCAACAATAGTTTTACAG
 CTCCCAGCACAGTAGGAAAGAGAAATTTGAGTCTAGTCAAGAGGAAGCTGGCCTGGAGGACGGAGTGTC
 AGGGGAGATTTCCGACACTGAGCTTGTGACAGCCGATTCTGTGACAGAGCCCTCTCAGAGGGAAGGAAA
 AAGGCCAAGAAATTAAGAAGTGAAGAAGGAGCTTTCTCCAGCAGGAAGCATCTCGAAGAACAGCCCTG
 CCACACTTTTGAAGTCTGACACATGG

ACGCGTACGCGGCCGCTCGAG - GFP Tag - GTTTAA

Protein Sequence:

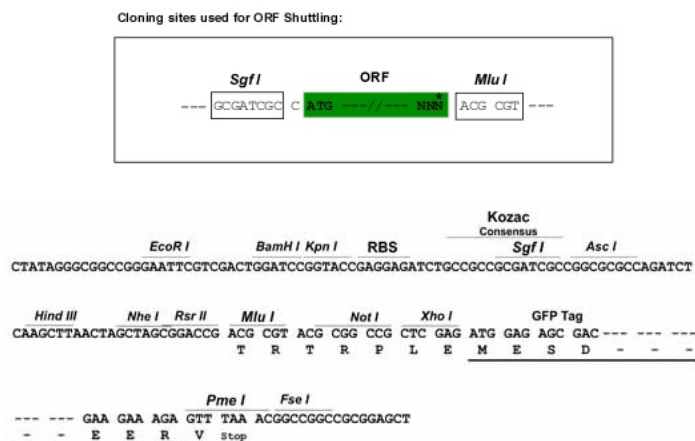
>RG234514 representing NM_001242992
 Red=Cloning site Green=Tags(s)

MEIIRSNFKSNLHKVYQAIIEADFFAIDGFEFSGISDGPVSVALTNGFDTPEERSSPDVKFVCQSSSIDFL
 ASQGFDFNKVFRNGIPYLNQEEERQLREQYDEKRSQANGAGALSYVSPNTSKPVTIPEDQKKFIDQVVE
 KIEDLLQSEENKNDLEPCTGFQRKLIYQTLQSWKYPKGIHVETLETEKKERYIVISKVDEEERKRREQQK
 HAKEQEELNDVGFSRVIHAIANSKGLVIGHNMLLDVMHTVHQFYCPLPADLSEFKEMTTCVPRLLDTK
 LMASTQPFKDIINNTSLAELEKRLKETPFNPPKVESAEGFPSYDTASEQLHEAGYDAYITGLCFISMAN
 YLGSFLSPPKIHVSARSKLIEPFFNKLFLMRVMDIPYLNLEGPDLQPKRDHVLHVTFPKEWKTSDLYQLFS
 AFGNIQISWIDDTSAFVSLSQPEQVKIAVNTSKYAESYRIQTYAEYMRKQEEKQIKRKWTEDSWKEADS
 KRLNPQCIPYTLQNHYYRNSFTAPSTVGKRNLSPSQEEAGLEDGVSGEISDTELEQTDSCAEPLSEGRK
 KAKKLRMKKELSPAGSISKNSPATLFEVPDWT

TRTRPLE - GFP Tag - V

Restriction Sites:

Sgfl-MluI

Cloning Scheme:


ACCN: NM_001242992

ORF Size: 1779 bp

OTI Disclaimer: The molecular sequence of this clone aligns with the gene accession number as a point of reference only. However, individual transcript sequences of the same gene can differ through naturally occurring variations (e.g. polymorphisms), each with its own valid existence. This clone is substantially in agreement with the reference, but a complete review of all prevailing variants is recommended prior to use. [More info](#)

OTI Annotation: This clone was engineered to express the complete ORF with an expression tag. Expression varies depending on the nature of the gene.

Components: The ORF clone is ion-exchange column purified and shipped in a 2D barcoded Matrix tube containing 10ug of transfection-ready, dried plasmid DNA (reconstitute with 100 ul of water).

Reconstitution Method:

1. Centrifuge at 5,000xg for 5min.
2. Carefully open the tube and add 100ul of sterile water to dissolve the DNA.
3. Close the tube and incubate for 10 minutes at room temperature.
4. Briefly vortex the tube and then do a quick spin (less than 5000xg) to concentrate the liquid at the bottom.
5. Store the suspended plasmid at -20°C. The DNA is stable for at least one year from date of shipping when stored at -20°C.

RefSeq: [NM_001242992.2](#)

RefSeq Size: 2945 bp

RefSeq ORF: 1782 bp

Locus ID: 5073

UniProt ID: [O95453](#)

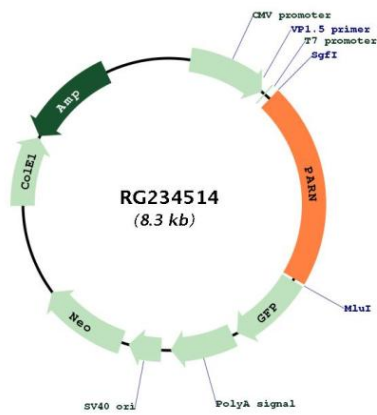
Cytogenetics: 16p13.12

Protein Families: Transcription Factors

Protein Pathways: RNA degradation

Gene Summary: The protein encoded by this gene is a 3'-exoribonuclease, with similarity to the RNase D family of 3'-exonucleases. It prefers poly(A) as the substrate, hence, efficiently degrades poly(A) tails of mRNAs. Exonucleolytic degradation of the poly(A) tail is often the first step in the decay of eukaryotic mRNAs. This protein is also involved in silencing of certain maternal mRNAs during oocyte maturation and early embryonic development, as well as in nonsense-mediated decay (NMD) of mRNAs that contain premature stop codons. Alternatively spliced transcript variants encoding different isoforms have been found for this gene. [provided by RefSeq, Aug 2008]

Product images:



Circular map for RG234514