

Product datasheet for **RG234476**

CFHR4 (NM_001201550) Human Tagged ORF Clone

Product data:

Product Type:	Expression Plasmids
Product Name:	CFHR4 (NM_001201550) Human Tagged ORF Clone
Tag:	TurboGFP
Symbol:	CFHR4
Synonyms:	CFHL4; FHR-4; FHR4
Mammalian Cell Selection:	Neomycin
Vector:	pCMV6-AC-GFP (PS100010)
E. coli Selection:	Ampicillin (100 ug/mL)



[View online »](#)

ORF Nucleotide Sequence:

>RG234476 representing NM_001201550
 Red=Cloning site Blue=ORF Green=Tags(s)

TTTTGTAATACGACTCACTATAGGGCGGCCGGAATTCGTCGACTGGATCCGGTACCGAGGAGATCTGCC
 GCC**CGGATCGCC**

ATGTTGTTACTAATCAATGTCATTCTGACCTTGTGGGTTTCTGTGCTAATGGACAAGAAGTGAACCTT
 GTGATTTTCCAGAAATCAACATGGAGGTCTATATTATAAGAGTTTGCCTAGACTATACTTTCCAGCAGC
 TGCAGGACAATCTTATTCTATTACTGTGATCAAAATTTGTGACTCCTTCAGGAAGTTACTGGGATTAC
 ATTCATTGCACACAAGATGGTTGGTCACCAACGGTCCCATGCCTCAGAACATGCTCAAAATCAGATGTAG
 AAATTGAAAATGGATTCAATTTCTGAATCTTCTCTATTTATATTTTAAATGAAGAAAACAATAAATTG
 TAAACCAGGATATGCAACAGCAGAGGAAATCTTCAGGATCAATTACATGTTTGCAAAATGGATGGTCA
 ACACAACCAATTTGCATTAATTTTGTGATATGCCTGTTTTTGAAGATCCAGAGCCAAGAGTAATGGCA
 TGTGGTTAAGCTCCATGACACATTGGACTATGAATGCTATGATGGATATGAAAGCAGTTATGGAAACAC
 CACAGATTCATAGTGTGGTGAAGATGGCTGGTCCCATTTGCCAACATGCTATAATTCTTCAGAAAAC
 TGTGGGCCTCCTCCACCTATTAGCAATGGAGATACCACGTCCTTCCCGCAAAAAGTGTATCTGCCATGGT
 CAAGAGTCGAGTACCAAGTCCAGTCCACTATGAACCTCAGGGTCTAAATATGTAACATGTAGTAATGG
 AGACTGGTCAGAACCAAGATGCATATCAATGAAACCTTGTGAGTTTCCAGAAATTCACATGGACAT
 CTATATTATGAGAATACGCGTAGACCATACTTTCCAGTAGCTACAGGACAATCTTACTCCTATTACTGTG
 ACCAAAATTTTGTGACTCCTTCAGGAAGTTACTGGGATTACATTCAGTGCACACAAGATGGTGGTTGCC
 AACAGTCCCATGCCTCAGAACATGCTCAAAATCAGATATAGAAATGAAAATGGATTCATTTCTGAATCT
 TCCTCTATTTATATTTTAAATAAAGAAAACAATAAATGTAACCAGGATATGCAACAGCAGATGGAA
 ATTTCTCAGGTTCAATTACATGTTTGCAAAATGGATGGTCAGCACAACCAATTTGCATTAATTTTGTGA
 TATGCCTGTTTTTGAAGATCCAGAGCCAAGAGTAATGGCATGCGGTTTTAAGCTCCATGACACATTGGAC
 TACGAATGCTACGATGGATATGAAATCAGTTATGGAAACACCACAGGTTCCATAGTGTGTGGTGAAGATG
 GGTGGTCCCATTCCCAACATGTTATAATTCTTCAGAAAAGTGTGGGCCTCCTCCACCTATTAGCAATGG
 TGATACCACCTCCTTTCTACTAAAAGTGTATGTGCCACAGTCAAGAGTCGAGTACCAATGCCAGTCTAC
 TATGAACCTCAGGGTTCTAATTATGTAACATGTAGTAATGGAGAGTGGTCGGAACCAAGATGCATAC
 ATCCATGTATAAATACTGAAGAAAACATGAATAAAAATAACATACAGTTAAAAGGAAAAAGTGACATAAA
 ATATTATGCAAAAACAGGGGATACCATTGAATTTATGTGTAATTTGGGATATAATGCGAATACATCAGTT
 CTATCATTCAAGCAGTGTGTAGGAAGGCATAGTGAATACCCAGATGCGAA

AG**CGGACCG**ACGCGTACGCGGCCGCTCGAG - GFP Tag - GTTTAA

Protein Sequence:

>RG234476 representing NM_001201550
 Red=Cloning site Green=Tags(s)

MLLLINVILTLWVSCANGQEVKPCDFPEIQHGGLYYKSLRRLYFPAAAGQSYSYYCDQNFVTPSGSYWDY
 IHCTQDGWSPVPLRRTCSKSDVEIENGFISESSIIYILNEETQYNCKPGYATAEGNSSGSITCLQNGWS
 TQPICIKFCDMPVFENSRAKSNMWFKLHDTLDYECYDGYESSYGNNTDSIVCGEDGWSHLPTCYNSSN
 CGPPPPISNGDTSFPQKYYLPWSRVEYQCQSYVELQGSKYVTCSDWSEPPRCISMKPCFPEIQHGH
 LYYENTRRPYFPVATGQSYSYCDQNFVTPSGSYWDYIHCTQDGWLPVPLRRTCSKSDIEIENGFISES
 SSIYILNKEIQYKCPGYATADGNSSGSITCLQNGWSAQPIKFCMPVFENSRAKSNMRFKLHDTLD
 YECYDGYEISYGNNTGSIVCGEDGWSHFPTCYNSEKCGPPPIISNGDTSFLLKVVVPQSRVEYQCQSY
 YELQGSNYVTCNGEWSEPPRCIHPCTIITEENMNKNNIQLKGSIDIKYYAKTGDTIEFMCKLGYNANTSV
 LSFQAVCREGIVEYPRCE

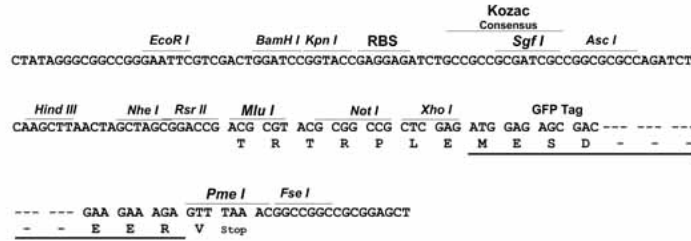
SGP**TRRRLE** - GFP Tag - V

Restriction Sites:

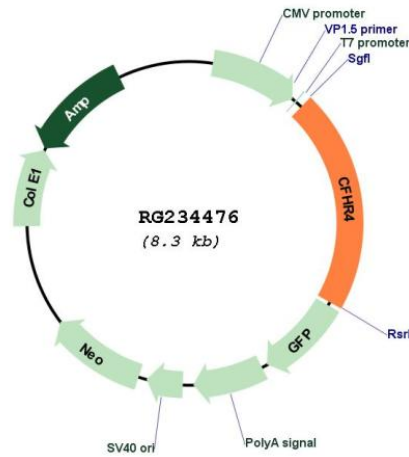
Sgfl-RsrII

Cloning Scheme:

Cloning sites used for ORF Shuttling:



Plasmid Map:



ACCN: NM_001201550

ORF Size: 1734 bp

OTI Disclaimer:	The molecular sequence of this clone aligns with the gene accession number as a point of reference only. However, individual transcript sequences of the same gene can differ through naturally occurring variations (e.g. polymorphisms), each with its own valid existence. This clone is substantially in agreement with the reference, but a complete review of all prevailing variants is recommended prior to use. More info
OTI Annotation:	This clone was engineered to express the complete ORF with an expression tag. Expression varies depending on the nature of the gene.
Components:	The ORF clone is ion-exchange column purified and shipped in a 2D barcoded Matrix tube containing 10ug of transfection-ready, dried plasmid DNA (reconstitute with 100 ul of water).
Reconstitution Method:	<ol style="list-style-type: none">1. Centrifuge at 5,000xg for 5min.2. Carefully open the tube and add 100ul of sterile water to dissolve the DNA.3. Close the tube and incubate for 10 minutes at room temperature.4. Briefly vortex the tube and then do a quick spin (less than 5000xg) to concentrate the liquid at the bottom.5. Store the suspended plasmid at -20°C. The DNA is stable for at least one year from date of shipping when stored at -20°C.
RefSeq:	NM_001201550.3
RefSeq Size:	2181 bp
RefSeq ORF:	1737 bp
Locus ID:	10877
UniProt ID:	Q92496
Cytogenetics:	1q31.3
Protein Families:	Secreted Protein
Gene Summary:	This gene is a member of the complement factor H (CFH) gene family, and encodes one of the 5 CFH-related (CFHR) proteins. These 5 genes are closely linked to the CFH gene on chromosome 1q31-q32. The CFHRs are secreted plasma proteins synthesized primarily by the hepatocytes, and composed of highly-related short consensus repeats (SCRs). This protein enhances the cofactor activity of CFH, and is involved in complement regulation. It can associate with lipoproteins and may play a role in lipid metabolism. Alternatively spliced transcript variants encoding different isoforms (varying in the number of SCRs) have been described for this gene. [provided by RefSeq, Jan 2011]