

Product datasheet for **RG234474**

CFHR4 (NM_001201551) Human Tagged ORF Clone

Product data:

Product Type:	Expression Plasmids
Product Name:	CFHR4 (NM_001201551) Human Tagged ORF Clone
Tag:	TurboGFP
Symbol:	CFHR4
Synonyms:	CFHL4; FHR-4; FHR4
Mammalian Cell Selection:	Neomycin
Vector:	pCMV6-AC-GFP (PS100010)
E. coli Selection:	Ampicillin (100 ug/mL)



[View online »](#)

ORF Nucleotide Sequence:

>RG234474 representing NM_001201551
 Red=Cloning site Blue=ORF Green=Tags(s)

TTTTGTAATACGACTCACTATAGGGCGGCCGGAATTCGTCGACTGGATCCGGTACCGAGGAGATCTGCC
 GCC**CGGATCGCC**

ATGTTGTTACTAATCAATGTCATTCTGACCTTGTGGGTTTCTGTGCTAATGGACAAGTAAACCTTGTG
 ATTTTCCAGAAATCAACATGGAGTCTATATTATAAGAGTTTGGTAGACTATACTTTCCAGCAGCTGC
 AGGACAATCTTATTCTATTACTGTGATCAAAATTTGTGACTCCTTCAGGAAGTTACTGGGATTACATT
 CATTGCACACAAGATGGTTGGTCAACACGGTCCCATGCCTCAGAACATGCTCAAAATCAGATGTAGAAA
 TTGAAAATGGATTCAATTTCTGAATCTTCTCTATTTATAATTTAAATGAAGAAACACAATAAATTGTAA
 ACCAGGATATGCAACAGCAGAGGGAAATTTCTCAGGATCAATTACATGTTTGCAAAATGGATGGTCAACA
 CAACCAATTTGCATTAATTTTGTGATATGCCTGTTTTGAGAATCCAGAGCCAAGAGTAATGGCATGT
 GGTTAAAGCTCCATGACACATTGGACTATGAATGCTATGATGGATATGAAAGCAGTTATGAAAACCCAC
 AGATTCCATAGTGTGGTGAAGATGGCTGGTCCCATTTGCCAACATGCTATAATTCTTCAGAAAAGTGT
 GGGCTCCTCCACTATTAGCAATGGAGATACCAGTCTTCCCGCAAAAAGTGTATCTGCCATGGTCAA
 GAGTCGAGTACCAGTGCCAGTCTACTATGAACTTCAGGGTTCTAAATATGTAACATGTAGTAATGGAGA
 CTGGTCAGAACCACAAGATGCATATCAATGAAACCTTGTGAGTTCCAGAAATCAACATGGACATCTA
 TATTATGAGAATACGCGTAGACCATACTTTCCAGTAGCTACAGGACAATCTTACTCCTATTACTGTGACC
 AAAATTTGTGACTCCTTCAGGAAGTTACTGGGATTACATTCCTGCACACAAGATGGTGGTTGCCAAC
 AGTCCCATGCCTCAGAACATGCTCAAAATCAGATATAGAAATGAAAATGGATTCATTTCTGAATCTTCC
 TCTATTTATATTTAAATAAAGAAATACAATAAATGTAACCAGGATATGCAACAGCAGATGGAATTT
 CTTCAGGTTCAATTACATGTTTTCAGAAATGGATGGTGGTGGTGGTGGTGGTGGTGGTGGTGGTGGT
 GCCTGTTTTGAGAATCCAGAGCCAAGAGTAATGGCATGCGGTTTAAAGCTCCATGACACATTGGACTAC
 GAATGCTACGATGGATATGAAATCAGTTATGGAACACCCACAGGTTCCATAGTGTGGTGAAGATGGGT
 GGTCCCATTTCCAACATGTTATAATTCTTCAGAAAAGTGTGGGCTCCTCCACTATTAGCAATGGTGA
 TACCACCTCCTTCTACTAAAAGTGTATGTGCCACAGTCAAGAGTCGAGTACCAATGCCAGTCTACTAT
 GAACCTCAGGTTCTAATTATGTAACATGTAGTAATGGAGAGTGGTGGGAAACCACAAGATGCATACATC
 CATGTATAATAACTGAAGAAAACATGAATAAAAAAACAACATACAGTTAAAAGGAAAAAGTGACATAAATA
 TTATGCAAAAACAGGGGATACCATTGAATTTATGTGTAATTTGGGATATAATGCGAATACATCAGTTCTA
 TCATTTCAAGCAGTGTGTAGGGAAGGCATAGTGAATACCCAGATGCGAA

AG**CGGACCG**ACGCGTACGCGGCCGCTCGAG - GFP Tag - GTTTAA

Protein Sequence:

>RG234474 representing NM_001201551
 Red=Cloning site Green=Tags(s)

MLLLINVILTLWVSCANGQVKPCDFPEIQHGGLYYKSLRRLYFPAAGQSYSYCDQNFVTPSGSYWDYI
 HCTQDGSPTVPCLRTCSKSDVEIENGFISESSSIYILNEETQYNCKPGYATAEGNSSGSITCLQNGWST
 QPICKIKFCMPVFENSRAKSNMWFKLHDTLDYECYDGYESSYGNNTDSIVCGEDGWSHLPTCYNSSENC
 GPPPPISNGDTSFPQKVYLPWSRVEYQCQSYELQGSKYVTCNSGDWSEPPRCISMKPCFPEIQHGHL
 YYENTRRPYFPVATGQSYSYCDQNFVTPSGSYWDYIHCTQDGLPTVPCLRTCSKSDIEIENGFISESS
 SIYILNKEIQYKCKPGYATADGNSSGSITCLQNGWSAQPIKIKFCMPVFENSRAKSNMRFKLHDTLDY
 EYDGYEISYGNNTGSIIVCGEDGWSHFPTCYNSSEKCGPPPPISNGDTSFLLKVYVPQSRVEYQCQSY
 ELQGSNYVTCNSGEWSEPPRCIHPICIITEENMNKNNIQLKGSIDIKYYAKTGDTIEFMCKLGYNANTSVL
 SFQAVCREGIVEYPRCE

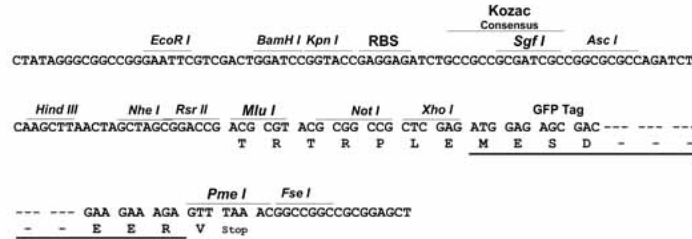
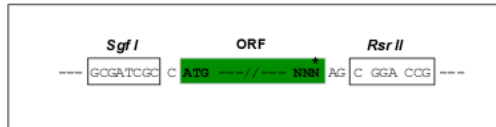
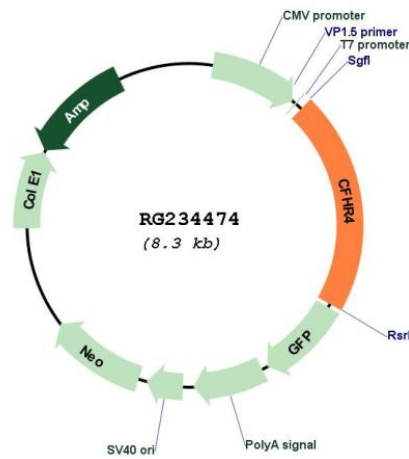
SGP**TRRRLE** - GFP Tag - V

Restriction Sites:

Sgfl-RsrII

Cloning Scheme:

Cloning sites used for ORF Shuttling:


Plasmid Map:


ACCN: NM_001201551
ORF Size: 1731 bp

OTI Disclaimer:	The molecular sequence of this clone aligns with the gene accession number as a point of reference only. However, individual transcript sequences of the same gene can differ through naturally occurring variations (e.g. polymorphisms), each with its own valid existence. This clone is substantially in agreement with the reference, but a complete review of all prevailing variants is recommended prior to use. More info
OTI Annotation:	This clone was engineered to express the complete ORF with an expression tag. Expression varies depending on the nature of the gene.
Components:	The ORF clone is ion-exchange column purified and shipped in a 2D barcoded Matrix tube containing 10ug of transfection-ready, dried plasmid DNA (reconstitute with 100 ul of water).
Reconstitution Method:	<ol style="list-style-type: none">1. Centrifuge at 5,000xg for 5min.2. Carefully open the tube and add 100ul of sterile water to dissolve the DNA.3. Close the tube and incubate for 10 minutes at room temperature.4. Briefly vortex the tube and then do a quick spin (less than 5000xg) to concentrate the liquid at the bottom.5. Store the suspended plasmid at -20°C. The DNA is stable for at least one year from date of shipping when stored at -20°C.
RefSeq:	NM_001201551.2
RefSeq Size:	2178 bp
RefSeq ORF:	1734 bp
Locus ID:	10877
UniProt ID:	Q92496
Cytogenetics:	1q31.3
Protein Families:	Secreted Protein
Gene Summary:	This gene is a member of the complement factor H (CFH) gene family, and encodes one of the 5 CFH-related (CFHR) proteins. These 5 genes are closely linked to the CFH gene on chromosome 1q31-q32. The CFHRs are secreted plasma proteins synthesized primarily by the hepatocytes, and composed of highly-related short consensus repeats (SCRs). This protein enhances the cofactor activity of CFH, and is involved in complement regulation. It can associate with lipoproteins and may play a role in lipid metabolism. Alternatively spliced transcript variants encoding different isoforms (varying in the number of SCRs) have been described for this gene. [provided by RefSeq, Jan 2011]