

Product datasheet for **RG234432**

LAT3 (SLC43A1) (NM_001198810) Human Tagged ORF Clone

Product data:

Product Type:	Expression Plasmids
Product Name:	LAT3 (SLC43A1) (NM_001198810) Human Tagged ORF Clone
Tag:	TurboGFP
Symbol:	SLC43A1
Synonyms:	LAT3; PB39; POV1; R00504
Mammalian Cell Selection:	Neomycin
Vector:	pCMV6-AC-GFP (PS100010)
E. coli Selection:	Ampicillin (100 ug/mL)



[View online »](#)

ORF Nucleotide Sequence:

>RG234432 representing NM_001198810
 Red=Cloning site Blue=ORF Green=Tags(s)

TTTTGTAATACGACTCACTATAGGGCGGCCGGGAATTCGTCGACTGGATCCGGTACCGAGGAGATCTGCC
 GCC**CGGATCGCC**

ATGGCCCCACGCTGCAACAGGCGTACCGAGGCGCTGGTGGATGGCCTGCACGGCTGTGCTGGAGAACC
 TCTTCTTCTCTGCTGTACTCCTGGGCTGGGGCTCCCTGTTGATCATTCTGAAGAACGAGGGCTTCTATT
 CAGCACGTGCCAGCTGAGAGCAGCACCAACACCACCCAGGATGAGCAGCGCAGGTGGCCAGGCTGTGAC
 CAGCAGGACGAGATGCTCAACCTGGGCTTACCATTGGTTCCTTCGTGCTCAGCGCCACCACCCTGCCAC
 TGGGGATCCTCATGGACCCTTTGGCCCCGACCCGTGCGGCTGGTTGGCAGTGCCTGCTTCACTGCGTC
 CTGCACCCTCATGGCCCTGGCCTCCCGGACGTGGAAGCTCTGTCTCCGTTGATATTCTGGCGCTGTCC
 CTGAATGGCTTTGGTGGCATCTGCCTAACGTTCACTTCACTCACGCTGCCAACATGTTTGGAACTGC
 GCTCCACGTTAATGGCCCTCATGATTGGCTCTTACGCTCTTCTGCCATTACGTTCCAGGAATCAAGCT
 GATCTACGATGCCGGTGTGGCCTTCGTGGTTCATCATGTTACCTGGTCTGGCCTGGCCTGCCTTATCTTT
 CTGAACCTGCACCCTCAACTGGCCATCGAAGCCTTTCCTGCCCTGAGGAAGTCAATTACACGAAGAAGA
 TCAAGCTGAGTGGGCTGGCCCTGGACCACAAGGTGACAGGTGACCTCTTCTACACCCATGTGACCACCAT
 GGGCCAGAGGCTCAGCCAGAAGGCCCCAGCCTGGAGGACGGTTCGGATGCCTTCATGTCACCCAGGAT
 GTTCGGGGCACCTCAGAAAACCTTCTGAGAGGTCTGTCCCTTACGCAAGAGCCTCTGCTCCCCACTT
 TCCTGTGGAGCCTCCTCACCATGGGCATGACCCAGCTGCGGATCATCTTCTACATGGCTGCTGTGAACA
 GATGCTGGAGTACCTTGTACTGGTGGCCAGGAGCATGAGACAAATGAACAGCAACAAAAGTGGCAGAG
 ACAGTTGGGTTCTACTCCTCCGCTTCGGGGCCATGCAGCTGTTGTGCCTTCTCACCTGCCCTCATTG
 GCTACATCATGGACTGGCGGATCAAGGACTGCGTGGACGCCCAACTCAGGGCACTGCTCCTCGGAGATGC
 CAGGGACGGGTTGCTACCAAATCCATCAGACCAGCTACTGCAAGATCCAAAAGCTACCAATGCCATC
 AGTGCCTTACCCTGACCAACCTGCTGCTTGTGGGTTTTGGCATCACCTGTCTCATCAACAACCTACACC
 TCCAGTTTGTGACCTTTGCTGTCACACCATTTGTTGAGGTTTTCTTCCACTCAGCCTGTGGGAGTCTCTA
 TGCTGCAGTGTCCCATCAACCACTTTGGGACGCTGACAGGCCTGCAGTCCCTCATCAGTGTGTGTTT
 GCCTTGTTCAGCAGCCACTTTTCATGGCGATGGTGGGACCCCTGAAAGGAGAGCCCTTCTGGGTGAATC
 TGGGCTCCTGCTATTCTACTCCTGGGATTCCTGTTGCCTTCTACCTTCTATTACCGTGCCCGGCT
 CCAGCAGGAGTACGCCCAATGGGATGGGCCACTGAAGGTGCTTAGCGGCTCTGAGGTGACCGCA

ACGCGTACGCGGCCGCTCGAG - GFP Tag - GTTTAA

Protein Sequence:

>RG234432 representing NM_001198810
 Red=Cloning site Green=Tags(s)

MAPTLQQAAYRRRWMMACTAVLENLFFSAVLLGWGSLLIILKNEGFYSSTCPAESSTNTTQDEQRRWP
 QQDEMLNLGFTIGSFVLSATTLPLGILMDRFGRPVRLVGSACFTASCTLMALASRDVEALSPLIFLALS
 LNGFGGICLFTSLTLPNMFNLRSTLMALMIGSYASSAITFPGIKLIYDAGVAFVIMFTWSGLACLIF
 LNCTLNWPIEAFPAPEEVNYTKIKLSGLALDHKVTGDLFYTHVTTMGQRLSQKAPSLEDGSDAFMSPQD
 VRGTSENLERSVPLRKSLSPTFLWSLLTMGMTQLRIIFYMAAVNKMLEYLVTGGQEHETNEQQQKVAE
 TVGFYSSVFGAMQLLCLLTCPLIGYIMDWRIKDCVDAPTQGTVLGDARDGVATKSIRPRYCKIQKLTNAI
 SAFTLTNLLL VGFGITCLINNLHLQFVTFVLTHTIVRGFFHSACGSLYAAVFPNHFGLTGLQSLISAVF
 ALLQQPLFMAMVGPLKGEPPFWNLGLLLFSLGFLLP SYLFYYRARLQEQEYAANGMPLKVL SGSEVTA

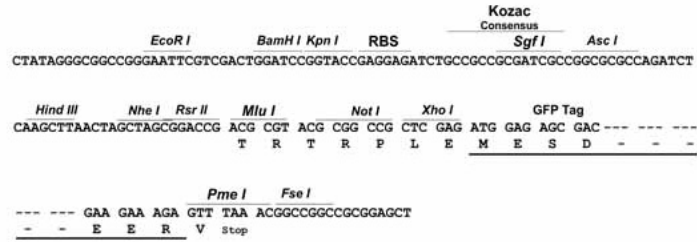
TRTRPLE - GFP Tag - V

Restriction Sites:

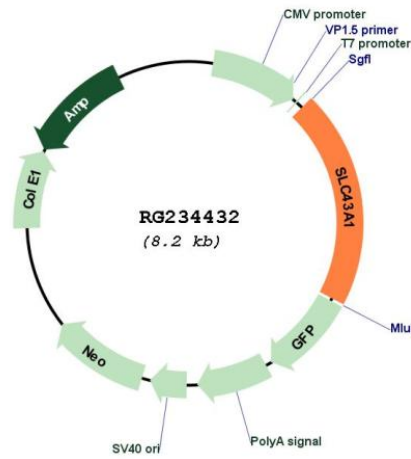
Sgfl-MluI

Cloning Scheme:

Cloning sites used for ORF Shutting:



Plasmid Map:



ACCN:	NM_001198810
ORF Size:	1677 bp
OTI Disclaimer:	The molecular sequence of this clone aligns with the gene accession number as a point of reference only. However, individual transcript sequences of the same gene can differ through naturally occurring variations (e.g. polymorphisms), each with its own valid existence. This clone is substantially in agreement with the reference, but a complete review of all prevailing variants is recommended prior to use. More info
OTI Annotation:	This clone was engineered to express the complete ORF with an expression tag. Expression varies depending on the nature of the gene.
Components:	The ORF clone is ion-exchange column purified and shipped in a 2D barcoded Matrix tube containing 10ug of transfection-ready, dried plasmid DNA (reconstitute with 100 ul of water).
Reconstitution Method:	<ol style="list-style-type: none">1. Centrifuge at 5,000xg for 5min.2. Carefully open the tube and add 100ul of sterile water to dissolve the DNA.3. Close the tube and incubate for 10 minutes at room temperature.4. Briefly vortex the tube and then do a quick spin (less than 5000xg) to concentrate the liquid at the bottom.5. Store the suspended plasmid at -20°C. The DNA is stable for at least one year from date of shipping when stored at -20°C.
RefSeq:	NM_001198810.2
RefSeq Size:	2384 bp
RefSeq ORF:	1680 bp
Locus ID:	8501
UniProt ID:	O75387
Cytogenetics:	11q12.1
Protein Families:	Transmembrane
Gene Summary:	SLC43A1 belongs to the system L family of plasma membrane carrier proteins that transports large neutral amino acids (Babu et al., 2003 [PubMed 12930836]).[supplied by OMIM, Mar 2008]