

## Product datasheet for **RG234362**

### **GPR161 (NM\_001267610) Human Tagged ORF Clone**

#### **Product data:**

Product Type:	Expression Plasmids
Product Name:	GPR161 (NM_001267610) Human Tagged ORF Clone
Tag:	TurboGFP
Symbol:	GPR161
Synonyms:	RE2
Mammalian Cell Selection:	Neomycin
Vector:	pCMV6-AC-GFP (PS100010)
E. coli Selection:	Ampicillin (100 ug/mL)



[View online »](#)

**ORF Nucleotide Sequence:**

>RG234362 representing NM\_001267610  
 Red=Cloning site Blue=ORF Green=Tags(s)

TTTTGTAATACGACTCACTATAGGGCGGCCGGGAATTCGTCGACTGGATCCGGTACCGAGGAGATCTGCC  
 GCC**CGGATCGCC**

ATGAGCCTCAACTCCTCCCTCAGCTGCAGGAAGGAGCTGAGTAATCTCACTGAGGAGGAGGGTGGCGAAG  
 GGGCGTCATCATCACCCAGTTCATCGCCATCATTGTCATCACCATTTTTGTCTGCCTGGGAAACCTGGT  
 CATCGTGGTCACCTTGTACAAGAAGTCCTACCTCACCTCAGCAACAAGTTCGTCTTCAAGCCTGACT  
 CTGTCCAACCTTCTGCTGTCCGTGTTGGTGTGCCTTTTGGTGACGAGCTCCATCCGACAGGAAATGGA  
 TCTTTGGTGTAGTGTGGTGAACCTTCTCTGCCCTCCTCTACCTGCTGATCAGCTCTGCCAGCATGCTAAC  
 CCTCGGGGTATTGCCATCGACCGCTACTATGCTGTCTGTACCCATGGTGTACCCCATGAAGATCACA  
 GGAACCCGGGCTGTGATGGCACTGTCTACATCTGGCTTCACTCGCTCATCGGCTGCCTGCCACCCCTGT  
 TTGGTTGGTCATCCGTGGAGTTGACGAGTTCAAATGGATGTGTGGCTGCTTGGCACCCGGGAGCCTGG  
 CTACACGGCCTTCTGGCAGATCTGGTGTGCCCTTCCCTTTCTGGTCACTGCTGGTGTGCTATGGCTTC  
 ATCTTCCGCGTGGCCAGGGTCAAGGCACGCAAGGTGCACTGTGGCACAGTCGTCATCGTGGAGGAGGATG  
 CTCAGAGGACCGGGAGGAAGAATCCAGCACCTCCACCTCCTTTCAGGCAGCAGGAGGAATGCCTTTCA  
 GGGTGTGGTCTACTCGGCCAACCAGTGCAAAGCCCTCATCACCATCCTGGTGGTCCCTCGGTGCCTTCATG  
 GTCACCTGGGGCCCTACATGGTTGTATCGCCTCTGAGGCCCTCTGGGGAAAAGCTCCGTCTCCCCGA  
 GCCTGGAGACTTGGGCCACATGGCTGTCTTTGCCAGCGCTGTCTGCCACCCCTGATCTATGGACTCTG  
 GAACAAGACAGTTCGCAAGAATACTGGGCATGTGCTTTGGGGACCGGTATTATCGGGAACCATTTGTG  
 CAACGACAGAGGACTTCCAGGCTCTTCAAGATTTCCAACAGGATCACAGACCTGGGCCTGCCCCACACC  
 TCACTGCGCTCATGGCAGGTGGACAGCCCTGGGGCACAGCAGCAGCACGGGGGACACTGGCTTCACTGT  
 CTCCAGGACTCAGGGACAGATATGATGCTGCTTGGAGACTACAGTCTGATGACAACCCCTCCCTCAC  
 TGCACTTGCCACCCAAGAGAAGGAGCTCGGTGACATTTGAGGATGAAGTGGAACAAATCAAGAAGCTG  
 CCAAGAATCGATTCTTATGTGAAAGCTGAAGTACACAAGTCTTGGACAGTTACGCAGCAAGCTTGGC  
 CAAAGCCATTGAGGCCGAAGCCAAAATCAACTATTTGGGGAGGAGGCTTGGCAGGGGTCTTGGTTACA  
 GCACGGACTGTCCGGGGGGCGGCTTGGGGGCCGCCGAGGCAGCAGAATCTTGTGAGCCAGAGGCTGC  
 AGTTGCAGAGCATCGAAGAAGGAGATGTTTTAGCTGCCGAGCAGAGA

**ACGCGTACGCGGCCGCTCGAG** – GFP Tag – GTTTAA

**Protein Sequence:**

>RG234362 representing NM\_001267610  
 Red=Cloning site Green=Tags(s)

MSLNSSLSCRKELSNL TEEEGEGGVIIITQFIAIIVITIFVCLGNLVIVVTLKYKSYLLTLSNKFVFSLT  
 LSNFLLSVLVPFVVTSSIRREWIFGVVWCNFSALLYLLISSASMLTLGVIAIDRYAYVLYPMVYPMKIT  
 GNRVAVMALVYIWLHSLIGCLPPLFGWSSVEFDEFKWMCVAAWHREPQYAFWQIWCALFPFLVMLVYGF  
 IFRVARVKARKVHCGTVVIVEEDAQRTRKNSSTSTSSSGSRNAFQGVVYSANQCKALITILVVLGAFM  
 VTWGPYMVVIASEALWGKSSVSPSLETWATWLSFASAVCHPLIYGLWNKTVRKELLMCFGDRRYREP  
 QQRQTSRFLFSISNRITDLGLSPHLTALMAGGQPLGHSSSTGDTGFSQSDSGTDMMLLEDYTSDDNPPSH  
 CTCPPKRRSSVTFEVEVEQIKEAAKNSILHVKAIEVHKSLSLSYAASLAKAIEAEAKINLFGEEALPGVLVT  
 ARTVPGGGFGRRRSRTLVSQRLQLQSIEEGDVLAAEQR

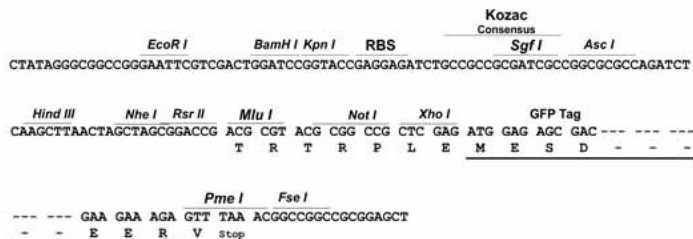
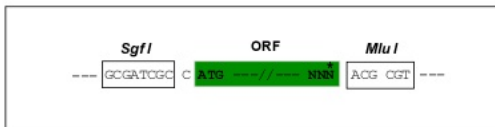
**TRTRPLE** – GFP Tag – V

**Restriction Sites:**

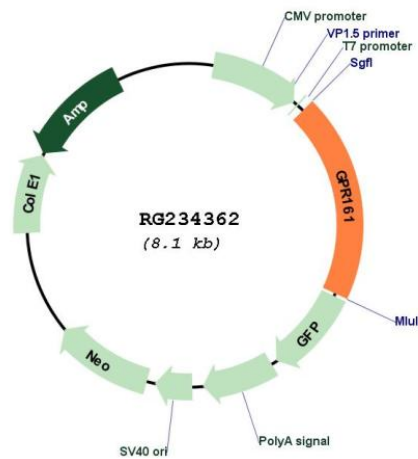
Sgfl-MluI

Cloning Scheme:

Cloning sites used for ORF Shuttling:



Plasmid Map:



<b>ACCN:</b>	NM_001267610
<b>ORF Size:</b>	1587 bp
<b>OTI Disclaimer:</b>	The molecular sequence of this clone aligns with the gene accession number as a point of reference only. However, individual transcript sequences of the same gene can differ through naturally occurring variations (e.g. polymorphisms), each with its own valid existence. This clone is substantially in agreement with the reference, but a complete review of all prevailing variants is recommended prior to use. <a href="#">More info</a>
<b>OTI Annotation:</b>	This clone was engineered to express the complete ORF with an expression tag. Expression varies depending on the nature of the gene.
<b>Components:</b>	The ORF clone is ion-exchange column purified and shipped in a 2D barcoded Matrix tube containing 10ug of transfection-ready, dried plasmid DNA (reconstitute with 100 ul of water).
<b>Reconstitution Method:</b>	<ol style="list-style-type: none"><li>1. Centrifuge at 5,000xg for 5min.</li><li>2. Carefully open the tube and add 100ul of sterile water to dissolve the DNA.</li><li>3. Close the tube and incubate for 10 minutes at room temperature.</li><li>4. Briefly vortex the tube and then do a quick spin (less than 5000xg) to concentrate the liquid at the bottom.</li><li>5. Store the suspended plasmid at -20°C. The DNA is stable for at least one year from date of shipping when stored at -20°C.</li></ol>
<b>RefSeq:</b>	<a href="#">NM_001267610.2</a>
<b>RefSeq Size:</b>	8228 bp
<b>RefSeq ORF:</b>	1590 bp
<b>Locus ID:</b>	23432
<b>UniProt ID:</b>	<a href="#">Q8N6U8</a>
<b>Cytogenetics:</b>	1q24.2
<b>Protein Families:</b>	Druggable Genome, GPCR, Transmembrane
<b>Gene Summary:</b>	The protein encoded by this gene is an orphan G protein-coupled receptor whose ligand is unknown. This gene is overexpressed in triple-negative breast cancer, and disruption of this gene slows the proliferation of basal breast cancer cells. Therefore, this gene is a potential drug target for triple-negative breast cancer. [provided by RefSeq, Mar 2017]