

Product datasheet for **RG234356**

PGBD5 (NM_001258311) Human Tagged ORF Clone

Product data:

Product Type:	Expression Plasmids
Product Name:	PGBD5 (NM_001258311) Human Tagged ORF Clone
Tag:	TurboGFP
Symbol:	PGBD5
Mammalian Cell Selection:	Neomycin
Vector:	pCMV6-AC-GFP (PS100010)
E. coli Selection:	Ampicillin (100 ug/mL)



[View online »](#)

ORF Nucleotide Sequence:

>RG234356 representing NM_001258311
 Red=Cloning site Blue=ORF Green=Tags(s)

TTTTGTAATACGACTCACTATAGGGCGGCCGGGAATTCGTCGACTGGATCCGGTACCGAGGAGATCTGCC
 GCC**CGGATCGCC**

ATGGCCGAGGGCGGGGGCGCGGAGGAGGGCGCGGCTGCTCGAGGCTGCCCGCGCGCTACG
 AGAGCCTGCACATCTCGACGACGTGTTGCGCGAGTCCGGCCCGACAGCGGGCGGAACCCCTTCTACAG
 CACCTCGGCCGCCTCGGCTCCTCCTCGGCCGCCTCCTCGGACGACGAGCGGAGCCCCGGGACCCCCA
 GGGGCCGCCCGCCACCGCCCGCGCCCGGACGACAGGAGCCGGAGGAGGACGAGGCCGGCGCGGGCT
 GGAGCGCAGCGCTGCGGGACCGCCCGCCCGCGCTTCGAGGATACCGGCGGTCCACCCGAAAGATGCC
 CCCCAGCGCCAGTCCGTGGACTTCTCCAGCTCTTTGTCCAGACAACGTCTCAAGAATGTTGGT
 CAGACAAACATGTATGCCAAGAAGTTCAGGAGCGGTTTGGGAGCGACGGAGCCTGGGTGGAGGTGACGC
 TGACGGAGATGAAGGCGTTCCTGGGCTACATGATCTCCACCAGCATCTCCACTGCGAGTCCGTCTCAG
 CATCTGGAGCGGAGGCTTCTACAGCAACCGCAGCCTCGCCCTCGTCATGAGCCAGGCCGCTTCGAGAAG
 ATCCTCAAGTACTTCCAGTCTGGCCTCCGCTCCAGCCAGACCACGCACGGGCTCTACAAGTCCAGC
 CCTTCTCGACTCCCTGCAGAACAGCTTCGACTCTGCCTTCAGGCCTTCCAAACCCAGGTGCTACATGA
 ACCCTGATCGATGAGGATCCTGTATTCATTGCCACGTGCACAGAGCGGGAGCTGCGAAAGAGGAAAAAG
 CGGAAATTCAGCCTCTGGGTGAGACAAATGTTCTTCCACTGGCTTCATCATCCAGATTTATGTCACCTGA
 AGGAAGGTGGGGGCCAGATGGCCTGGATGCGCTGAAGAATAAGCCCCAGCTCCACAGCATGGTGGCCAG
 GAGCCTGTGCCGAACCGCGCAGGCAAGAACTACATCATTTTTACGGGGCCAGCATCACCAGCCTGACG
 CTGTTTGAAGAGTTTGAAGAAGCAAGGGATTTACTGCTGCGGCTTGCTCCGCGCGGGAAGAGTACTGCA
 CCGGCCTCCACTGTCCATGCTGACCAACCCAGCCACACCCCGGCCCGGGCCAGTACCAATCAAGT
 GAAGGGGAACATGTCCTTGATCTGCTGGTACAACAAGGACACTTCCGCTTCTGACCAACGCCTACTCC
 CCGGTGCAGCAGGAGTATCATCAAAAGGAAGAGTGGGAGATCCCATGCCCTTGCCGTGGAGGCGT
 TTGCCGCTCACCTGAGCTACATCTGCAGATACGATGACAAATACAGCAAGTATTTTCTATAAACC
 AAACAAGACCTGGCAGCAGGTGTTCTGGTTCGCCATCAGCATCGCCATCAACAATGCCTACATCCTGTAC
 AAAATGTCAGACGCTACCACGTGAAGAGGTACAGCCGGGCGCAGTTTGGAGAGAGACTCGTCAGAGAGC
 TGCTGGGCTTGGAGGATGCCTCTCCGACCCAC

ACGCGTACGCGGCCGCTCGAG - GFP Tag - GTTTAA

Protein Sequence:

>RG234356 representing NM_001258311
 Red=Cloning site Green=Tags(s)

MAEGGGGARRRAPALLEARARYESLHISDDVFGESGPDSSGPNPFYSTSAASRSSSAASSDDEREPPGPP
 GAAPPPRAPDAQEPEEDEAGAGWSAALRDRPPPRFEDTGGPTRKMPPSASAVDFQLFVPDNLKMMVV
 QTNMYAKKFQERFGSDGAWVEVLTTEMKAFLGYMISTSIHCSVLSIWSGGFYNSRLALVMSQARFEK
 ILKYFHVVAFRSSQTTHGLYKVPFLDSLQNSFDSAFRPSQTQVLHEPLIDEDPVFIATCTERELRKRKK
 RKFSLWVRQCSSTGFI IQIYVHLKEGGGPDGLDALKNKPQLHSMVARSLCRNAAGKNYIIFTGPSITSLT
 LFEEFEKQGIYCCGLLRARKSDCTGLPLSMLTNPATPPARGQYQIKMKGNMSLICWYNKGHFRFLNAYS
 PVQQGVIIKRKSGEIPCPLAVEFAAHLISYICRYDDKYSKYFISHKPNKTWQQVFWFAISIAINNAIYLY
 KMSDAYHVKRYRAQFGERLVRELLGLEASPTH

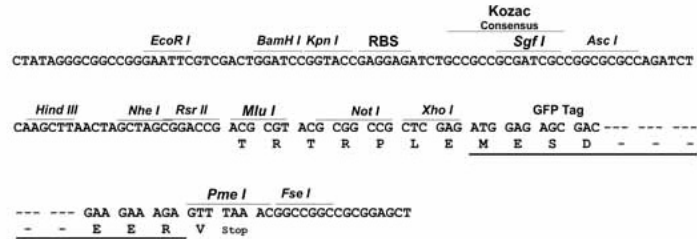
TRTRPLE - GFP Tag - V

Restriction Sites:

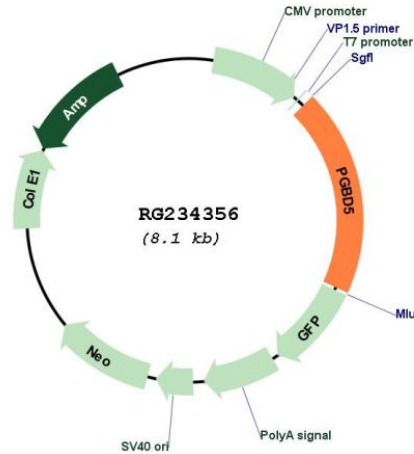
Sgfl-MluI

Cloning Scheme:

Cloning sites used for ORF Shutting:



Plasmid Map:



ACCN: NM_001258311

ORF Size: 1572 bp

OTI Disclaimer: The molecular sequence of this clone aligns with the gene accession number as a point of reference only. However, individual transcript sequences of the same gene can differ through naturally occurring variations (e.g. polymorphisms), each with its own valid existence. This clone is substantially in agreement with the reference, but a complete review of all prevailing variants is recommended prior to use. [More info](#)

OTI Annotation: This clone was engineered to express the complete ORF with an expression tag. Expression varies depending on the nature of the gene.

Components: The ORF clone is ion-exchange column purified and shipped in a 2D barcoded Matrix tube containing 10ug of transfection-ready, dried plasmid DNA (reconstitute with 100 ul of water).

Reconstitution Method:

1. Centrifuge at 5,000xg for 5min.
2. Carefully open the tube and add 100ul of sterile water to dissolve the DNA.
3. Close the tube and incubate for 10 minutes at room temperature.
4. Briefly vortex the tube and then do a quick spin (less than 5000xg) to concentrate the liquid at the bottom.
5. Store the suspended plasmid at -20°C. The DNA is stable for at least one year from date of shipping when stored at -20°C.

RefSeq: [NM_001258311.2](#)

RefSeq Size: 3373 bp

RefSeq ORF: 1575 bp

Locus ID: 79605

UniProt ID: [Q8N414](#)

Cytogenetics: 1q42.13

Gene Summary: The piggyBac family of proteins, found in diverse animals, are transposases related to the transposase of the canonical piggyBac transposon from the moth, *Trichoplusia ni*. This family also includes genes in several genomes, including human, that appear to have been derived from the piggyBac transposons. This gene belongs to the subfamily of piggyBac transposable element derived (PGBD) genes. The PGBD proteins appear to be novel, with no obvious relationship to other transposases, or other known protein families. [provided by RefSeq, May 2010]