

Product datasheet for **RG234334**

PDZK1 (NM_001201325) Human Tagged ORF Clone

Product data:

Product Type:	Expression Plasmids
Product Name:	PDZK1 (NM_001201325) Human Tagged ORF Clone
Tag:	TurboGFP
Symbol:	PDZK1
Synonyms:	CAP70; CLAMP; NHERF-3; NHERF3; PDZD1
Mammalian Cell Selection:	Neomycin
Vector:	pCMV6-AC-GFP (PS100010)
E. coli Selection:	Ampicillin (100 ug/mL)



[View online »](#)

ORF Nucleotide Sequence:

>RG234334 representing NM_001201325
 Red=Cloning site Blue=ORF Green=Tags(s)

TTTTGTAATACGACTCACTATAGGGCGGCCGGAATTCGTCGACTGGATCCGGTACCGAGGAGATCTGCC
 GCC**GCGATCGCC**

ATGACCTCCACCTTCAACCCCCGAGAATGTAACTGTCCAAGCAAGAAGGGCAAACATATGGCTTCTTCC
 TGCGAATTGAGAAGGACACCGAGGGCCACTGGTCCGGGTGGTTGAGAAGTGTAGCCAGCAGAGAAGGC
 TGGCCTTCAAGATGGAGACAGAGTTCTTAGGATCAATGGTGTCTTTGTGGACAAAGAAGACATATGCAG
 GTTGTGGATCTGGTCAGAAAAGAGTGGGAATTCAGTGACTTTACTAGTTCTGGATGGGGATTCTATGAGA
 AAGCAGTGA AACACGGGTGGACTTGAAAGAGTTGGGTCAAAGTCAGAAGGAGCAAGTTTGAGTGATAA
 TATACTTTCCCTGTGATGAATGGAGGTGTGCAAACCTGGACCCAGCCCCGGCTCTGCTATCTCGTGAAG
 GAAGGAGGCAGCTATGGCTTCTCTCTGAAAAGTGTCCAAGGTAAAAGGGGGTGTACATGACTGATTA
 CACCTCAAGGTGTGGCTATGAGAGCTGGAGTTCTGGCTGATGATCACTTGATTGAAGTGAATGGAGAGAA
 TGTAGAGGATGCCAGCCATGAGGAAGTGGTTGAAAAGGTGAAGAAGTCAGGAAGCCGTGCATGTTCTCTG
 CTGGTGGACAAAGAACTGACAAGCGTCAATGTTGAGCAGAAGATACAATTCAAAAGAGAAAACAGCCAGTT
 TGAAACTGTTACCCACAGCCCCGAATTGTGGAGATGAAGAAAGGAAGCAATGGCTATGGTTTCTATCT
 GAGGGCAGGCTCAGAACAGAAAGGTCAAATCATCAAGGACATAGATTCTGGAAGTCCAGCAGAGGAGGCT
 GGCTTGAAGAACAATGATCTGGTAGTTGCTGTCAACGGCGAGTCTGTGGAACCCCTGGATCATGACAGTG
 TGGTAGAAATGATTAGAAAGGGTGGAGATCAGACTTCACTGTTGGTGGTAGACAAAGAGACGGACAACAT
 GTACAGACTGGCTCATTTTTCTCCATTTCTCTACTATCAAAGTCAAGAACTGCCCAATGGCTCTGTCAAG
 GAGGCTCCAGCTCCTACTCCACTTCTCTGGAAGTCTCAAGTCCACCAGATACTACAGAGGAAGTAGATC
 ATAAGCTAAACTCTGCAGGCTGGCTAAAGGTGAAAATGGCTATGGCTTTCACTTAAATGCGATTCCGGGG
 TCTGCCAGGCTCATTATCAAAGAGGTACAGAAGGGCGGTCCTGCTGACTTGGCTGGCTAGAGGATGAG
 GATGTCATCATTGAAGTGAATGGGTGAATGTGCTAGATGAACCCATGAGAAGGTGGTGGATAGAATCC
 AGAGCAGTGGGAAGAATGTCACACTTCTAGTCTGTGGAAGAAGGCCTATGATTATTTCCAAGCTAAGAA
 AATCCCTATTGTTTCTCCCTGGCTGATCCACTTGACACCCCTCCAGATTCTAAAGAAGGAATAGTGGTG
 GAGTCAAACCATGACTCGCACATGGCAAAGAACGGGCCACAGTACAGCCTCACATTCTTCTTCCAATT
 CTGAAGATACAGAGATG

ACGCGTACGCGGCCGCTCGAG - GFP Tag - GTTTAA

Protein Sequence:

>RG234334 representing NM_001201325
 Red=Cloning site Green=Tags(s)

MTSTFNPRECKLSKQEGQNYGFFLRIEKDTEGHLVRVVEKCSPAEKAGLQDGRVLRINGVFDKKEEIMQ
 VVDLVRKSGNSVTLLVLDGDSYEKAVKTRVDLDELGQSQKEQGLSDNILSPVMNGGVQWTQPRLCYLK
 EGGSYGFSLKTVQGGKGYMTDITPQGVAMRAGVLAADDHLIEVNGENVEDASHEEVVEKVKKSGSRVMFL
 LVDKETDKRHVEQKIQFKRETASLKLPHQPRIVEMKKSNGYGFYLRAGSEQKGGQI IKDIDSGSPAEEA
 GLKNNDLVAVNGESVETLDHDSVEMIRKGGDQTSLLVVDKETDNMYRLAHFSPFLYYQSQELPNGSVK
 EAPAPTPTSLEVSSPPDTTEEVDHKPKLCRLAKGENGYGFHLNAIRGLPGSFIKEVQKGGPADLAGLEDE
 DVIIEVNGVNVLDPEYKVVDRIQSSGKNVTLLVCGKKAYDYFQAKKIPIVSSLADPLDTPPDSKEGIVV
 ESNHDSHMAKERAHSTASHSSNSSEDEEM

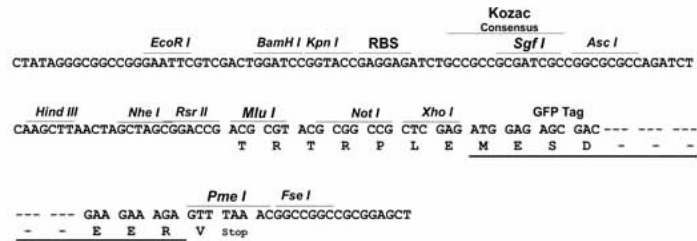
TRTRPLE - GFP Tag - V

Restriction Sites:

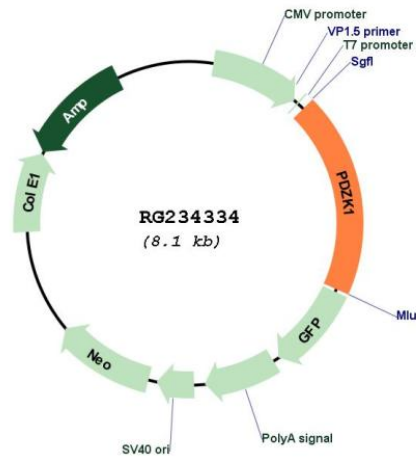
Sgfl-MluI

Cloning Scheme:

Cloning sites used for ORF Shutting:



Plasmid Map:



ACCN:	NM_001201325
ORF Size:	1557 bp
OTI Disclaimer:	The molecular sequence of this clone aligns with the gene accession number as a point of reference only. However, individual transcript sequences of the same gene can differ through naturally occurring variations (e.g. polymorphisms), each with its own valid existence. This clone is substantially in agreement with the reference, but a complete review of all prevailing variants is recommended prior to use. More info
OTI Annotation:	This clone was engineered to express the complete ORF with an expression tag. Expression varies depending on the nature of the gene.
Components:	The ORF clone is ion-exchange column purified and shipped in a 2D barcoded Matrix tube containing 10ug of transfection-ready, dried plasmid DNA (reconstitute with 100 ul of water).
Reconstitution Method:	<ol style="list-style-type: none">1. Centrifuge at 5,000xg for 5min.2. Carefully open the tube and add 100ul of sterile water to dissolve the DNA.3. Close the tube and incubate for 10 minutes at room temperature.4. Briefly vortex the tube and then do a quick spin (less than 5000xg) to concentrate the liquid at the bottom.5. Store the suspended plasmid at -20°C. The DNA is stable for at least one year from date of shipping when stored at -20°C.
RefSeq:	NM_001201325.2
RefSeq Size:	2230 bp
RefSeq ORF:	1560 bp
Locus ID:	5174
UniProt ID:	Q5T2W1
Cytogenetics:	1q21.1
Gene Summary:	This gene encodes a PDZ domain-containing scaffolding protein. PDZ domain-containing molecules bind to and mediate the subcellular localization of target proteins. The encoded protein mediates the localization of cell surface proteins and plays a critical role in cholesterol metabolism by regulating the HDL receptor, scavenger receptor class B type 1. Single nucleotide polymorphisms in this gene may be associated with metabolic syndrome, and overexpression of this gene may play a role in drug resistance of multiple myeloma. Pseudogenes of this gene are located on the long arm of chromosome 1. Alternatively spliced transcript variants encoding multiple isoforms have been observed for this gene. [provided by RefSeq, Jan 2011]