

## Product datasheet for **RG234325**

### **GPR176 (NM\_001271854) Human Tagged ORF Clone**

#### **Product data:**

Product Type:	Expression Plasmids
Product Name:	GPR176 (NM_001271854) Human Tagged ORF Clone
Tag:	TurboGFP
Symbol:	GPR176
Synonyms:	HB-954
Mammalian Cell Selection:	Neomycin
Vector:	pCMV6-AC-GFP (PS100010)
E. coli Selection:	Ampicillin (100 ug/mL)



[View online »](#)

**ORF Nucleotide Sequence:**

>RG234325 representing NM\_001271854  
 Red=Cloning site Blue=ORF Green=Tags(s)

TTTTGTAATACGACTCACTATAGGGCGGCCGGAATTCGTCGACTGGATCCGGTACCGAGGAGATCTGCC  
 GCC**CGGATCGCC**

ATGGGACATAACGGGAGCTGGATCTCTCCAATGCCAGCGAGCCGCACAACGCGTCCGGCGCCGAGGCTG  
 CGGGTGTGAACCGCAGCGCCTCGGGGAGTTCGGCGAGGCGCAGCTGTACCGCCAGTTACCACCACCGT  
 GCAGGTCGTCATCTTCATAGGCTCGCTGCTCGAGTTTGGCAACATGGAGGTCAGTACAAAACCTGATAAG  
 AGCAGACTGCCTGGGATTAAGTTCATTAACAACTGGCCTGCTCGGGGATTTGTGCCAGCCTGGTCTGTG  
 TGCCCTTCGACATCATCCTCAGCACCAGTCTCACTGTTGCTGGTGGATCTACACCATGCTCTTCTGCAA  
 GGTCGTCAAATTTTGCACAAAGTATTCTGCTCTGTGACCATCCTCAGCTTCCCTGCTATTGCTTTGGAC  
 AGGTACTACTCAGTCTCTATCCACTGGAGAGGAAAATATCTGATGCCAAGTCCCGTGAAGTGGTGTGT  
 ACATCTGGGCCCATGCAGTGGTGGCCAGTGTCCCTGTGTTGCAGTAACCAATGTGGCTGACATCTATGC  
 CACGTCCACCTGCACGGAAGTCTGGAGCAACTCCTTGGGCCACCTGGTGTACGTTCTGGTGTATAACATC  
 ACCACGGTCATTGTGCCTGTGGTGGTGGTTCCTCTTCTTGATACTGATCCGACGGGCCCTGAGTGCCA  
 GCCAGAAGAAGAAGGTCATCATAGCAGCGCTCCGGACCCACAGAACACCATCTCTATCCCTATGCCTC  
 CCAGCGGGAGGCCGAGCTGCACGCCACCCTGCTCTCCATGGTGTGGTCTTTCATCTTGTGTAGCGTGCC  
 TATGCCACCCTGGTCTGTACCAGACTGTGCTCAATGTCCCTGACACTCCGCTCTTCTTGTGCTCACTG  
 CTGTTTGGCTGCCAAAGTCTCCCTGCTGGCAAACCTGTTCTCTTTCTTACTGTGAACAAATCTGTCCG  
 CAAGTGTGATAGGGACCCTGGTGAACCTACACCACCGGTACAGTCGCCGTAATGTGGTCAAGTACAGGG  
 AGTGGCATGGCTGAGGCCAGCCTGGAACCCAGCATACGCTCGGGTAGCCAGCTCCTGGAGATGTTCCACA  
 TTGGGCAGCAGCAGATCTTTAAGCCACAGAGGATGAGGAAGAGAGTGAAGCAAGTACATTGGCTCAGC  
 TGACTCCAGGCCAAGGAGATATTTAGCACCTGCCTGGAGGAGAGCAGGGGCCACAGTTTGCGCCCTCT  
 GCCCACCCCTGAGCACAGTGGACTCTGTATCCAGGTGGCACCCGACGCCCTGTGGAACCTGAAACAT  
 TCCCTGATAAGTATCCCTGCAGTTTGGCTTTGGGCCTTTTGTGCTCCTCAGTGGCTCTCAGAGAC  
 CCGAAACAGCAAGAAGCGGCTGCTTCCCCCTTGGGCAACACCCAGAGAGCTGATCCAGACAAAGGTG  
 CCCAAGGTAGGCAGGGTGGAGCGGAAGATGAGCAGAAACAATAAAGTGAAGTATTTTCCAAAGGTGGATT  
 CC

AG**CGGACCG**ACGCGTACGCGGCCGCTCGAG - GFP Tag - GTTTAA

**Protein Sequence:**

>RG234325 representing NM\_001271854  
 Red=Cloning site Green=Tags(s)

MHNGSWISPNASEPHNASGAEAGVNRSLGEGEAQLYRQFTTTVQVVIFIGSLLEFGNMEVTRKLDK  
 SRLPGIKFIKNLACSGICASLVCVPFDIILSTSPHCCWIIYTMLFCKVVKFLHKVFCSVTILSFPALD  
 RYYSVLYPLERKISDAKSRELVMIWAHAVVASVPVFAVTNVADIYATSTCTEVWSNSLGHLYVLYVNI  
 TTVIVPVVVVFLFLILIRRALSASQKKKVIIAALRTPQNTISIPYASQREELHATLLSMVMVILCSVP  
 YATLVVYQTVLNVDPDTSVFLLLTAVWLPKVSLLANPVFLTVNKSVRKCLIGTLVQLHHRYSRRNVVSTG  
 SGMAEASLEPSIRSGSQLLEMFHIGQQQIFKPTEDDEESEAKYIGSADFQAKEIFSTCLEGEQGPQFAPS  
 APPLSTVDSVSQVAPAAPVEPETFPDKYSLQFGFPGFELPPQWLSETRNSKRLLPPLGNTPEELIQTKV  
 PKVGRVERKMSRNNKVSIFPKVDS

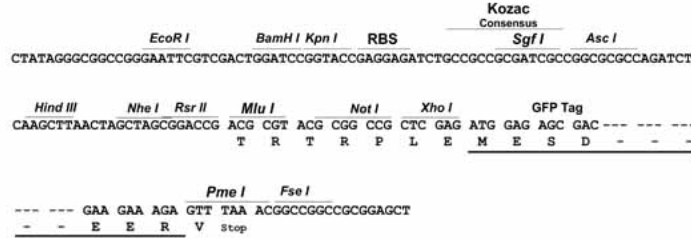
SGP**TRRRLE** - GFP Tag - V

**Restriction Sites:**

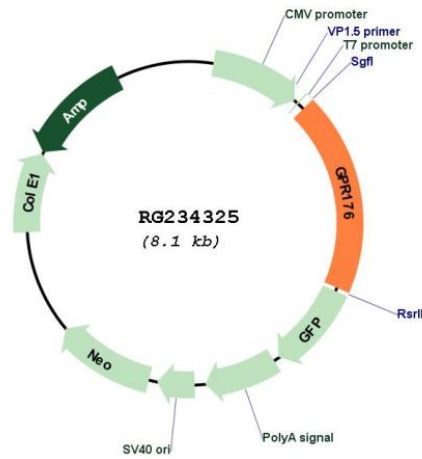
Sgfl-RsrII

Cloning Scheme:

Cloning sites used for ORF Shuttling:



Plasmid Map:



<b>ACCN:</b>	NM_001271854
<b>ORF Size:</b>	1542 bp
<b>OTI Disclaimer:</b>	The molecular sequence of this clone aligns with the gene accession number as a point of reference only. However, individual transcript sequences of the same gene can differ through naturally occurring variations (e.g. polymorphisms), each with its own valid existence. This clone is substantially in agreement with the reference, but a complete review of all prevailing variants is recommended prior to use. <a href="#">More info</a>
<b>OTI Annotation:</b>	This clone was engineered to express the complete ORF with an expression tag. Expression varies depending on the nature of the gene.
<b>Components:</b>	The ORF clone is ion-exchange column purified and shipped in a 2D barcoded Matrix tube containing 10ug of transfection-ready, dried plasmid DNA (reconstitute with 100 ul of water).
<b>Reconstitution Method:</b>	<ol style="list-style-type: none"><li>1. Centrifuge at 5,000xg for 5min.</li><li>2. Carefully open the tube and add 100ul of sterile water to dissolve the DNA.</li><li>3. Close the tube and incubate for 10 minutes at room temperature.</li><li>4. Briefly vortex the tube and then do a quick spin (less than 5000xg) to concentrate the liquid at the bottom.</li><li>5. Store the suspended plasmid at -20°C. The DNA is stable for at least one year from date of shipping when stored at -20°C.</li></ol>
<b>RefSeq:</b>	<a href="#">NM_001271854.2</a>
<b>RefSeq Size:</b>	4539 bp
<b>RefSeq ORF:</b>	1545 bp
<b>Locus ID:</b>	11245
<b>UniProt ID:</b>	<a href="#">Q14439</a>
<b>Cytogenetics:</b>	15q14-q15.1
<b>Protein Families:</b>	Druggable Genome, GPCR, Transmembrane
<b>Gene Summary:</b>	Members of the G protein-coupled receptor family, such as GPR176, are cell surface receptors involved in responses to hormones, growth factors, and neurotransmitters (Hata et al., 1995 [PubMed 7893747]).[supplied by OMIM, Jul 2008]