

Product datasheet for **RG234272**

TMEM200A (NM_001258276) Human Tagged ORF Clone

Product data:

| | |
|---------------------------|--|
| Product Type: | Expression Plasmids |
| Product Name: | TMEM200A (NM_001258276) Human Tagged ORF Clone |
| Tag: | TurboGFP |
| Symbol: | TMEM200A |
| Synonyms: | KIAA1913; TTMA; TTMC |
| Mammalian Cell Selection: | Neomycin |
| Vector: | pCMV6-AC-GFP (PS100010) |
| E. coli Selection: | Ampicillin (100 ug/mL) |



[View online »](#)

ORF Nucleotide Sequence:

>RG234272 representing NM_001258276
 Red=Cloning site Blue=ORF Green=Tags(s)

TTTTGTAATACGACTCACTATAGGGCGGCCGGGAATTCGTCGACTGGATCCGGTACCGAGGAGATCTGCC
 GCC**CGCATCGCC**

ATGATAGCAACTGGTGGAGTGATAACTGGCCTGGCCGCTTGAAGGCAAGACTCTGCCAGATCACAGC
 AGCATGTCAACCTCAGCCGCTCCTGCTACCCAAGAGAAGAAGCCCATCAGGCGCCGGCCCGGGCAGA
 TGTTGTGGTTGTTCTGCGTGGCAAAATCCGGCTTTATTCCCCATCTGGTTTTTTTTCTATTTTAGGAGTGCTC
 ATCTCCATTATAGGAATTGCTATGGCCGTTCTTGGATATTGGCCCCAAAAAGAACATTTTATTGATGCTG
 AAACAACACTGTCAACAAATGAACTCAGGTCAATCGAATGAAGGCGGTGTGGTGGTTCGCTTCTTTGA
 GCAGCATTGCAATCTGATAAGATGAAATGCTTGGCCATTACCATGGGGATTGGCATTTCATTTTC
 ATTTGTGCTAATGCCATTCTTCATGAAAACCGTGACAAAGAGACCAAAATCATACACATGAGGGATATCT
 ATCCACAGTCATTGACATTCACACGCTAAGAATCAAGGAGCAAAGCAAATGAACGGCATGTACTCTGG
 TTTGATGGGAGAAACAGAAGTAAACAGAATGGGAGCTCCTGTGCCTCGAGATTGCCAGCAAATACGATC
 GCCTCTTTCTCGGTTTTTCGGAGCAGTTTTCGAATGGACAGCTCCGTGGAGGAGGATGAACCTATGTTAA
 ATGAAGGTAAGAGTTCTGGGCATCTTATGCCCCCTTTGCTCTCTGACAGCTCTGTGTCTGTCTTTGGCCT
 CTATCCACCTCCTTCCAAGACAACCTGATGATAAGACCAGCGGCTCTAAGAAATGTGAAACCAAGTCAATT
 GTGTCACTCGTCCATCAGTGCTTTTACATTGCTGTGATCAAACCTAATAACTGTGTTATTGATGAGCCCA
 GTATAGATAACATCACTGAAGATGCTGACAACCTCAAAGTAGGTCAAGGAATTTGTCAATGGATTCCCT
 TGTGGTTCCTTTGCCAACACCAGTGAATCCTCCAGCCCGTCAGCACAGTGCTACCAAGGAATAATTCC
 ATTTGGGAGTCGTTGTCGAGTCAGTACAAGTCATCTATGGCTCTCGGACCTGGGGCTGGACAGCTCTTGT
 CTCTGGGGCTGCCAGAAGACAGTTTGGGTCCAATACATCCTTGCATTGCTCTCGTCAACTCAAAGTC
 CTTGGACTTAGACCGGGTCCCTCCACTCTAAGTGTTCAGGCAGAACACGGAAACATCCAAGTTGGCCT
 AGGTTGGATCGGAACAACAGCAAGGATATATGAACTAGAGAACAAGAACCCGATGGATAGGTTGC
 TTGTGCCCAAGTTGCCATCAAAAAGGACTTTACCAATAAGGAGAAGCTTCTTATGATTTCAAGATCTCA
 CAATAATTTGAGTTTTGAACATGATGAGTTTTTGAGTAACAACCTAAAGAGGGGAACCTCTGAAACAAGG
 TTT

ACGCGTACGCGGCCGCTCGAG – GFP Tag – GTTTAA

Protein Sequence:

>RG234272 representing NM_001258276
 Red=Cloning site Green=Tags(s)

MIATGGVITGLAALKRQDSARSQQHVNLSPPATQEKKPIRRRPRADVVRGKIRLYSPSGFFLILGVL
 ISIIIGIAMAVLGYWPQKEHFIDAETTLSTNETQVIRNEGGVVVRFQHLHSDKMKMLGPFMTMIGIFIF
 ICANAILHENRDKETKIIHMRDIYSTVIDIHTLRIKEQRQMNGMYTGLMGETEYKQNGSSCASRLAANTI
 ASFSGFRSSFRMDSSVEEDELMLNEGKSSGHLMPPLLSDSSVSVFGLYPPPSKTTDDKTSGSKKCEKTSI
 VSSSISAFITLPVIKLNNCVIDEPSIDNITEDADNLKRSRNL SMDSLVVPLPNTSESFQPVSTVLPNNNS
 IGESLSSQYKSSMALGPGAGQLLSPGAARRQFGSNTSLHLLSSHKSLDLDRGPSTLTVQAEQRKHPSPW
 RLDRNNSKGYMKLENKEDPMDRLLVPQVAIKKDFTNKEKLLMISRSHNNLSFEHDEFLLNNLKRGTSETR
 F

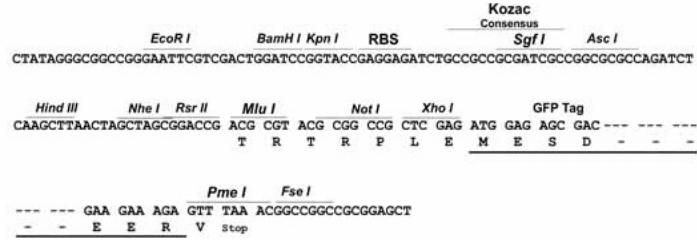
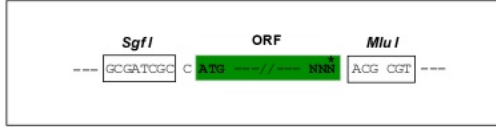
TRTRPLE – GFP Tag – V

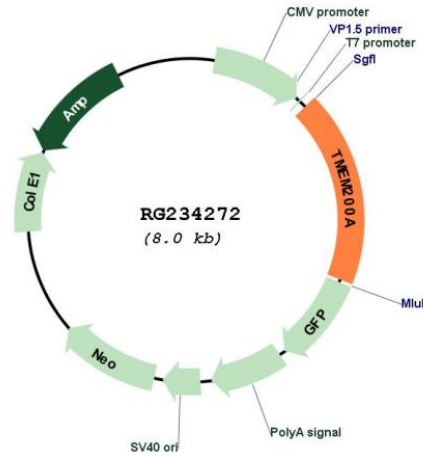
Restriction Sites:

Sgfl-MluI

Cloning Scheme:

Cloning sites used for ORF Shutting:



Plasmid Map:


ACCN: NM_001258276

ORF Size: 1473 bp

OTI Disclaimer: The molecular sequence of this clone aligns with the gene accession number as a point of reference only. However, individual transcript sequences of the same gene can differ through naturally occurring variations (e.g. polymorphisms), each with its own valid existence. This clone is substantially in agreement with the reference, but a complete review of all prevailing variants is recommended prior to use. [More info](#)

OTI Annotation: This clone was engineered to express the complete ORF with an expression tag. Expression varies depending on the nature of the gene.

Components: The ORF clone is ion-exchange column purified and shipped in a 2D barcoded Matrix tube containing 10ug of transfection-ready, dried plasmid DNA (reconstitute with 100 ul of water).

Reconstitution Method:

1. Centrifuge at 5,000xg for 5min.
2. Carefully open the tube and add 100ul of sterile water to dissolve the DNA.
3. Close the tube and incubate for 10 minutes at room temperature.
4. Briefly vortex the tube and then do a quick spin (less than 5000xg) to concentrate the liquid at the bottom.
5. Store the suspended plasmid at -20°C. The DNA is stable for at least one year from date of shipping when stored at -20°C.

RefSeq: [NM_001258276.1](#), [NP_001245205.1](#)

RefSeq Size: 2924 bp

RefSeq ORF: 1476 bp

Locus ID: 114801

UniProt ID: [Q86VY9](#)

Cytogenetics: 6q23.1

Protein Families: Transmembrane