

Product datasheet for **RG234244**

SOAT 1 (SOAT1) (NM_001252512) Human Tagged ORF Clone

Product data:

Product Type:	Expression Plasmids
Product Name:	SOAT 1 (SOAT1) (NM_001252512) Human Tagged ORF Clone
Tag:	TurboGFP
Symbol:	SOAT 1
Synonyms:	ACACT; ACAT; ACAT-1; ACAT1; SOAT; STAT
Mammalian Cell Selection:	Neomycin
Vector:	pCMV6-AC-GFP (PS100010)
E. coli Selection:	Ampicillin (100 ug/mL)



[View online »](#)

ORF Nucleotide Sequence:

>RG234244 representing NM_001252512
 Red=Cloning site Blue=ORF Green=Tags(s)

TTTTGTAATACGACTCACTATAGGGCGGCCGGAATTCGTCGACTGGATCCGGTACCGAGGAGATCTGCC
 GCC**CGATCGCC**

ATGAAGGAAGTTGGCAGTCACTTTGATGATTTTGTGACCAATCTCATTGAAAAGTCAGCATCATTAGATA
 ATGGTGGGTGCGCTCTCACAACTTTTCTGTTCTTGAAGGAGAGAAAAACAACCATAGAGCGAAGGATTT
 GAGAGCACCTCCAGAACAAGGAAAGATTTTATTGCAAGGCGCTCTCTTTAGATGAACTGCTTGAAGTG
 GACCACATCAGAACAAATATACATGTTTATTGCCCTCCTCATTCTCTTTATCCTCAGCACACTTGTAG
 TAGATTACATTGATGAAGGAAGGCTGGTGTGAGTTCAGCCTCCTGTCTTATGCTTTTGGCAAATTTCC
 TACCGTTGTTGGACCTGGTGGATCATGTTCTGTCTACATTTTCAGTCCCTATTTTCTGTTTCAACAT
 TGGGCCACTGGCTATAGCAAGAGTTCATCCGCTGATCCGTTCTCTTCCATGGCTTTCTTTTCATGA
 TCTTCCAGATTGGAGTTCTAGGTTTGGACCAACATATGTTGTGTAGCATATACTGCCACCAGCTTC
 CCGGTTTCATCATTATTCGAGCAGATTCGTTTGTAAATGAAGGCCCACTATTTGTGAGAGAGAACGTG
 CCTCGGGTACTAAATTCAGCTAAGGAGAAATCAAGCACTGTTCCAATACCTACAGTCAACCAAGTATTGT
 ACTTCTTATTTGCTCCTACCCCTATCTACCGTGACAGCTATCCCAGGAATCCCCTGTAAGATGGGGTTA
 TGTGCTATGAAGTTGCACAGGCTTTTGGTTGCTTTTCTATGTGTAATCTTTGAAAGGCTTTGT
 GCCCCTTGTTCGGAATATCAACAGGAGCCCTTCAGCGCTCGTGTCTGGTCCATGTGATTTAACT
 CCATCTTGCCAGGTGTGCTGATTCTCTTCTTACTTTTTTGCCTTTTGCCTGCTGGCTCAATGCCTT
 TGCTGAGATGTTACGCTTTGGTGACAGGATGTTCTATAAGGATTGGTGAACTCCACGTCATACTCCAAC
 TATTATAGAACCTGGAATGTGGTGGTCCATGACTGGCTATATTACTATGCTTACAAGGACTTTCTCTGGT
 TTTTCTCCAAGAGATTCAAATCTGCTGCCATGTTAGCTGTCTTTGCTGTATCTGCTGATGACACGAATA
 TGCTTGGCTGTTGCTTGAGCTTTTCTATCCGCTGCTCTTCGCTCTTCATGTTCTTTGGAATGGCT
 TTCAACTTCATTGCAATGATAGTCGAAAAAGCCGATTTGGAATGTTCTGATGTGGACTTCTTTTTCT
 TGGGCAATGGAGTCTTACTCTGCTTTTATTCTCAAGAATGGTATGCACGTCAGCACTGCTCTGAAAAA
 TCCACATTTTTGGATTATGTCCGGCCAGTTCCTGGACTTGTGTTACGTGTT

ACGCGTACGCGGCCGCTCGAG - GFP Tag - GTTTAA

Protein Sequence:

>RG234244 representing NM_001252512
 Red=Cloning site Green=Tags(s)

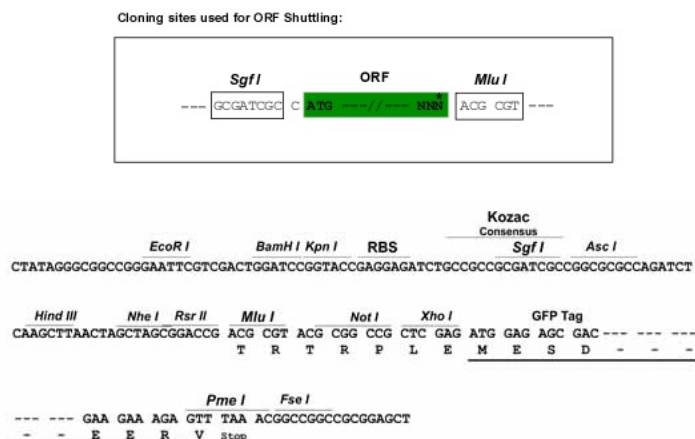
MKEVGSFDFDFTNLIEKSASLDNGGCALTTFSVLEGEKNNHRAKDLRAPPEQKIFIARRSLDELLEV
 DHIRTIYHMFIALLLILFVVDYIDEGRLVLEFSLLSYAFGKFPVVTWIMFLSTFSVPYFLFQH
 WATGYSKSSHPLIRSLFHGFLMIFQIGVLGFGPTYVVLAYTLPPASRFIIIFEQIRFVMKAHSFVRENV
 PRVLNSAKEKSSTVPIPTVNQYLYFLFAPTLIYRDSYPRNPTVRWGYVAMKFAQVFGCFYVYIFERLC
 APLFRNIKQEPFSARVLVLCVFNILPGVLLFLTFFAFLHCWLNFAEMLRFGDRMFYKDWNNSTSYSN
 YYRTWNVVVDWLYYYAYKDFLWFFSKRFKSAAMLAVFAVSAVVHEYALAVCLSFYFVFLVLFMFFGMA
 FNFIVNDSRKKPIWNLVMTSLFLGNGVLLCFYSQEWYARQHCLKNPTFLDYVRPRSWTCRYVF

TRTRPLE - GFP Tag - V

Restriction Sites:

Sgfl-MluI

Cloning Scheme:



ACCN: NM_001252512

ORF Size: 1455 bp

OTI Disclaimer: The molecular sequence of this clone aligns with the gene accession number as a point of reference only. However, individual transcript sequences of the same gene can differ through naturally occurring variations (e.g. polymorphisms), each with its own valid existence. This clone is substantially in agreement with the reference, but a complete review of all prevailing variants is recommended prior to use. [More info](#)

OTI Annotation: This clone was engineered to express the complete ORF with an expression tag. Expression varies depending on the nature of the gene.

Components: The ORF clone is ion-exchange column purified and shipped in a 2D barcoded Matrix tube containing 10ug of transfection-ready, dried plasmid DNA (reconstitute with 100 ul of water).

Reconstitution Method:

1. Centrifuge at 5,000xg for 5min.
2. Carefully open the tube and add 100ul of sterile water to dissolve the DNA.
3. Close the tube and incubate for 10 minutes at room temperature.
4. Briefly vortex the tube and then do a quick spin (less than 5000xg) to concentrate the liquid at the bottom.
5. Store the suspended plasmid at -20°C. The DNA is stable for at least one year from date of shipping when stored at -20°C.

RefSeq: [NM_001252512.1](#), [NP_001239441.1](#)

RefSeq Size: 6812 bp

RefSeq ORF: 1458 bp

Locus ID: 6646

UniProt ID: [P35610](#)

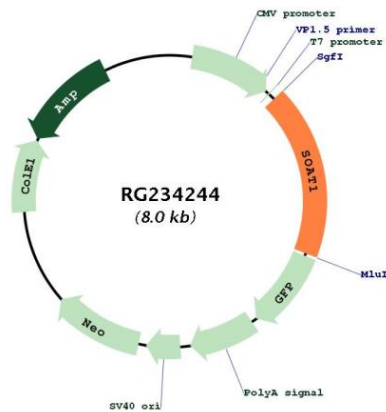
Cytogenetics: 1q25.2

Protein Families: Transmembrane

Protein Pathways: Steroid biosynthesis

Gene Summary: The protein encoded by this gene belongs to the acyltransferase family. It is located in the endoplasmic reticulum, and catalyzes the formation of fatty acid-cholesterol esters. This gene has been implicated in the formation of beta-amyloid and atherosclerotic plaques by controlling the equilibrium between free cholesterol and cytoplasmic cholesteryl esters. Alternatively spliced transcript variants have been found for this gene. [provided by RefSeq, Nov 2011]

Product images:



Circular map for RG234244