

Product datasheet for **RG234221**

CHRNA6 (NM_001199279) Human Tagged ORF Clone

Product data:

Product Type:	Expression Plasmids
Product Name:	CHRNA6 (NM_001199279) Human Tagged ORF Clone
Tag:	TurboGFP
Symbol:	CHRNA6
Synonyms:	CHNRA6
Mammalian Cell Selection:	Neomycin
Vector:	pCMV6-AC-GFP (PS100010)
E. coli Selection:	Ampicillin (100 ug/mL)



[View online »](#)

ORF Nucleotide Sequence:

>RG234221 representing NM_001199279
 Red=Cloning site Blue=ORF Green=Tags(s)

TTTTGTAATACGACTCACTATAGGGCGGCCGGAATTCGTCGACTGGATCCGGTACCGAGGAGATCTGCC
 GCC**CGCATCGCC**

ATGCTGACCAGCAAGGGGACGGGATTCTTCATGGGGCTTGTGTCTCTGGCTGTGTGTTCACACCTT
 TCTTTAAAGGCTGTGTGGCTGTGCAACTGAGGAGAGGCTCTCCACAACTGTTTTCTCATTACAACCA
 GTTCATCAGGCCCTGTGGAAAACGTTTCCGACCCTGTCACGGTACACTTTGAAGTGCCATCACCCAGCTG
 GCCAACGTGATCTGGAATGATTATAAATTGCGCTGGGATCCAATGGAATATGATGGCATTGAGACTCTTC
 GCGTTCCTGCAGATAAGATTTGGAAGCCCGACATTGTTCTCTATAACAATGCTGTTGGTGACTTCCAAGT
 AGAAGGCAAAAACAAAAGCTCTTCTAAATACAATGGCATGATAACCTGGACTCCACCAGCTATTTTTAAG
 AGTTCCTGCCCTATGGATATCACCTTTTCCCTTTTGATCATCAAACTGTTCCCTAAAATTTGGTTCCT
 GGACGTATGACAAAGCTGAAATGATCTTCTAATCATTGGATCAAAAGTGGATATGAATGATTTTTGGGA
 AAACAGTGAATGGGAAATCATTGATGCCTCTGGCTACAAACATGACATCAAACTGTTGTGAAGAG
 ATATACACAGATATAACCTATTCTTTCTACATTAGAAGATTGCCGATGTTTTACACGATTAATCTGATCA
 TCCCTTGCTCTTTATTTCAATTTCTAACCGTGTGGTCTTTTACCTTCTTCGGACTGTGGTAAAAAGT
 GACGCTTTGATTTACAGTCTGCTTTCTCTGACTGTGTTTTGCTGGTCAACACAGAAACCATCCCATCC
 ACATCTCTGGTGGTCCCCTGGTGGGTGAGTACCTGCTGTTCCACCATGATCTTTGTACACTGTCCATCG
 TGGTGACTGTGTTGTGTTGAACATACTACCGACCCCAACCACGCACACAATGCCAGGTGGGTGAA
 GACAGTTTTCTGAAGCTGCTGCCCCAGGCTCTGCTGATGAGGTGGCCTCTGGACAAGACAAGGGGCACA
 GGCTCTGATGCAGTCCCCAGAGGCTTCCAGGAGGCTGCCAAAGGCAAGCTTGCAAGCCATGGGGAAC
 CCAGACATCTTAAAGAATGCTTCCATTGTCACAAATCAAATGAGCTTGCCACAAGCAAGAGAAGATTAAG
 TCATCAGCCATTACAGTGGGTGGTGGAAAATTCGGAGCACTCGCCTGAAGTTGAAGATGTGATTAACAGT
 GTTCAGTTCATAGCAGAAAACATGAAGGCCACAATGAAACCAAGGAGGTAGAAGATGACTGAAAATACG
 TGGCCATGGTGGTGGACAGAGTATTTCTTTGGGTATTTATAATTGTCTGTGATTTGGAAGTGCAGGGCT
 ATTTCTACAGCCACTACTGGGAACACAGGAAAATCT

ACGCGTACGCGGCCGCTCGAG – GFP Tag – GTTTAA

Protein Sequence:

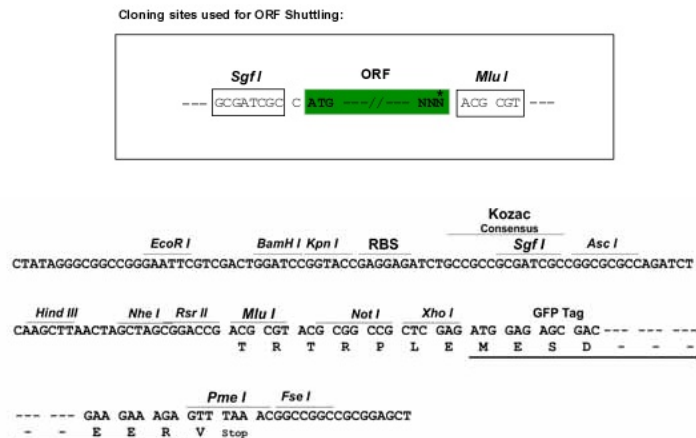
>RG234221 representing NM_001199279
 Red=Cloning site Green=Tags(s)

MLTSKGQGFLLHGGGLCLWLCVFTPPFFKGCVGCATEERL FHKLF SHYNQF IRPVENVSDPVTVHFEVAITQL
 ANVIWNDYKLRWDPMEYDGIETLRVPADKIWKPDIVLYNNAVGFQVEGKTKALLKYNMGITWTPPAIFK
 SSCPMDITFFPFDHQNC SLKFGSWTYDKAEIDLLIIGSKVDMNDFWENSEWEIIDASGYKHDIKYNCC EE
 IYTDITYSFYIRRLPMFYINLIIPCLFISFLTVLVFYLP SDCGEKVTLCISVLLSLTVFLLVITETIPS
 TSLVVPLVGEYLLFTMIFVTL SIVVTVFV LNIHYRTP THTMPRWKTVFLKLLPQVLLMRWPLDKTRGT
 GSDAVPRGLARRPAKGLASHGEP RHLKECFHCHKSNELATSKRRLSHQPLQWV VENSEHSPEVEDVINS
 VQFIAENMKSHNETKEVEDD WKYVAMVDRVFLWVFIIVCVFGTAGLFLQPLL GNTGKS

TRTRPLE – GFP Tag – V

Restriction Sites:

Sgfl-Mlul

Cloning Scheme:


ACCN: NM_001199279

ORF Size: 1437 bp

OTI Disclaimer: The molecular sequence of this clone aligns with the gene accession number as a point of reference only. However, individual transcript sequences of the same gene can differ through naturally occurring variations (e.g. polymorphisms), each with its own valid existence. This clone is substantially in agreement with the reference, but a complete review of all prevailing variants is recommended prior to use. [More info](#)

OTI Annotation: This clone was engineered to express the complete ORF with an expression tag. Expression varies depending on the nature of the gene.

Components: The ORF clone is ion-exchange column purified and shipped in a 2D barcoded Matrix tube containing 10ug of transfection-ready, dried plasmid DNA (reconstitute with 100 ul of water).

Reconstitution Method:

1. Centrifuge at 5,000xg for 5min.
2. Carefully open the tube and add 100ul of sterile water to dissolve the DNA.
3. Close the tube and incubate for 10 minutes at room temperature.
4. Briefly vortex the tube and then do a quick spin (less than 5000xg) to concentrate the liquid at the bottom.
5. Store the suspended plasmid at -20°C. The DNA is stable for at least one year from date of shipping when stored at -20°C.

RefSeq: [NM_001199279.1](#), [NP_001186208.1](#)

RefSeq Size: 2355 bp

RefSeq ORF: 1440 bp

Locus ID: 8973

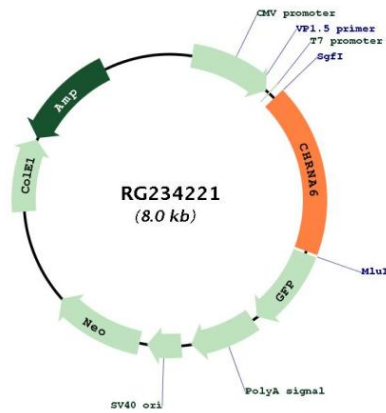
UniProt ID: [Q15825](#)

Cytogenetics: 8p11.21

Protein Families: Druggable Genome, Ion Channels: Cys-loop Receptors, Transmembrane

Gene Summary: This gene encodes an alpha subunit of neuronal nicotinic acetylcholine receptors. These receptors consist of five subunits and function as ion channels involved in neurotransmission. The encoded protein is a subunit of neuronal nicotinic acetylcholine receptors that mediate dopaminergic neurotransmission and are activated by acetylcholine and exogenous nicotine. Alternatively spliced transcript variants have been observed for this gene. Single nucleotide polymorphisms in this gene have been associated with both nicotine and alcohol dependence. [provided by RefSeq, Dec 2010]

Product images:



Circular map for RG234221