

Product datasheet for **RG234203**

MEF2C (NM_001193350) Human Tagged ORF Clone

Product data:

Product Type:	Expression Plasmids
Product Name:	MEF2C (NM_001193350) Human Tagged ORF Clone
Tag:	TurboGFP
Symbol:	MEF2C
Synonyms:	C5DELq14.3; DEL5q14.3
Mammalian Cell Selection:	Neomycin
Vector:	pCMV6-AC-GFP (PS100010)
E. coli Selection:	Ampicillin (100 ug/mL)



[View online »](#)

ORF Nucleotide Sequence:

>RG234203 representing NM_001193350
 Red=Cloning site Blue=ORF Green=Tags(s)

TTTTGTAATACGACTCACTATAGGGCGGCCGGAATTCGTCGACTGGATCCGGTACCGAGGAGATCTGCC
 GCC**CGATCGCC**

ATGGGGAGAAAAAGATTACAGATTACGAGGATTATGGATGAACGTAACAGACAGGTGACATTTACAAGA
 GGAAATTTGGGTTGATGAAGAAGGCTTATGAGCTGAGCGTGCTGTGTACTGTGAGATTGCGCTGATCAT
 CTTCAACAGCACCAACAAGCTGTTCCAGTATGCCAGCACCGACATGGACAAAGTCTTCTCAAGTACACG
 GAGTACAACGAGCCGCATGAGAGCCGGACAACTCAGACATCGTGGAGACGTTGAGAAAGAAGGGCCTTA
 ATGGCTGTGACAGCCAGACCCCGATGCGGACGATTCCGTAGGTCACAGCCCTGAGTCTGAGGACAAGTA
 CAGGAAAATTAACGAAGATATTGATCTAATGATCAGCAGGCAAAGATTGTGTGCTGTTCCACCTCCCAAC
 TTCGAGATGCCAGTCTCCATCCAGTGTCCAGCCACAACAGTTTGGTGTACAGCAACCCTGTCAGCTCAC
 TGGGAAACCCCAACCTATTGCCACTGGCTACCCTTCTCTGCAGAGGAATAGTATGTCTCCTGGTGAAC
 ACATCGACCTCCAAGTGCAGGTAACACAGGTGGTCTGATGGTGGAGACCTCACGCTGGTGCAGGCACC
 AGTGCAGGGAACGGGTATGGCAATCCCCGAACTACCAGGTCTGCTGGTCTCACCTGGTAACTGAACA
 AGAATATGCAAGCAAAATCTCCTCCCCAATGAATTTAGGAATGAATAACCGTAAACCAGATCTCCGAGT
 TCTTATCCACCAGGCAGCAAGAATACGATGCCATCAGTGTCTGAGGATGTGACCTGCTTTTGAATCAA
 AGGATAAATAACTCCCAGTCGGCTCAGTCATTGGCTACCCAGTGGTTTCCGTAGCAACTCTACTTTAC
 CAGGACAAGGAATGGGAGGATATCCATCAGCCATTTCAACAACATATGGTACCGAGTACTCTCTGAGTAG
 TGCAGACCTGTCTCTGTCTGGGTTAACACCGCCAGCGCTTTCACCTTGGTTCAGTAACTGGCTGG
 CAACAGCAACACCTACATAACATGCCACCATCTGCCCTCAGTCAGTTGGGAGCTTGCACTAGCACTATT
 TATCTCAGAGTTCAAATCTCCTCCCTGCTTCTACTCAAAGCCTCAACATCAAGTCAGAACCTGTTTCTCC
 TCCTAGAGACCGTACCACCACCCCTTCGAGATACCCACAACACACGCGCCACGAGGCGGGAGATCTCCT
 GTTGACAGCTTGAGCAGCTGTAGCAGTTCGTACGACGGGAGCGACCGAGAGGATCACCGGAAACGAATTCC
 ACTCCCCATTGGACTACCAGACCTTCGCCGGACGAAAGGGAAAGTCCCTCAGTCAAGCGCATGCGACT
 TTCTGAAGGATGGGCAACA

ACGCGTACGCGGCCGCTCGAG - GFP Tag - GTTTAA

Protein Sequence:

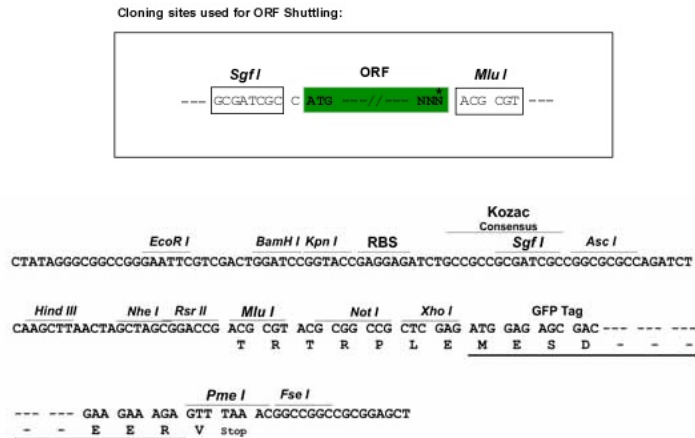
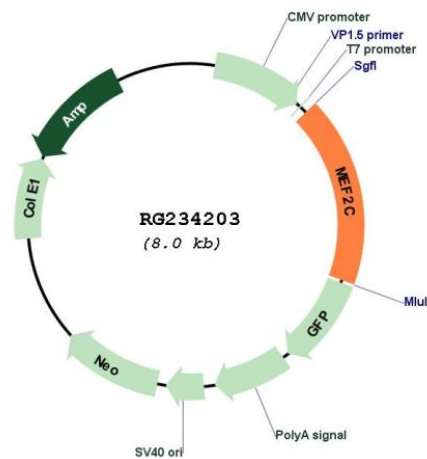
>RG234203 representing NM_001193350
 Red=Cloning site Green=Tags(s)

MGRKKIQITRIMDERNRQVFTTKRKFGLMKKAYELSVLCDCEIALIIFNSTNKL FQYASTDMDKVLLKYT
 EYNEPHERSTNSDIVETLRKKGLNGCDSPDPDADDSVGHSPESDKYRKINEDIDLMSRQRLCAVPPPN
 FEMPVSI PVSSHNSLVSNPVSSLGNPNLLPLAHP SLQRNSMSPGVTHRPPSAGNTGGLMGGDLTSGAGT
 SAGNGYGNPRNSPGLLVSPGNLNKNMQAKSPPPMNLGMNNRKPDLRVLIPPGSKNTMPSVSEDVDLLLQ
 RINNSQSAQSLATPVVSATPTLPQGGMGYPSAISTTYGTEYSLSSADLSSLSGFNTASALHLGSVTGW
 QQQHLHNMPPSALSQLGACTSTHLSQSSNLSLPSTQSLNIKSEPVSPDRRTTTPSRYPQHTRHEAGRSP
 VDSLSSCSSYDGDREDHRNEFHSPIGLTRPSPDERESPVKRMRLSEGWAT

TRTRPLE - GFP Tag - V

Restriction Sites:

SgfI-MluI

Cloning Scheme:

Plasmid Map:


ACCN: NM_001193350

ORF Size: 1419 bp

OTI Disclaimer: The molecular sequence of this clone aligns with the gene accession number as a point of reference only. However, individual transcript sequences of the same gene can differ through naturally occurring variations (e.g. polymorphisms), each with its own valid existence. This clone is substantially in agreement with the reference, but a complete review of all prevailing variants is recommended prior to use. [More info](#)

OTI Annotation: This clone was engineered to express the complete ORF with an expression tag. Expression varies depending on the nature of the gene.

Components: The ORF clone is ion-exchange column purified and shipped in a 2D barcoded Matrix tube containing 10ug of transfection-ready, dried plasmid DNA (reconstitute with 100 ul of water).

Reconstitution Method:

1. Centrifuge at 5,000xg for 5min.
2. Carefully open the tube and add 100ul of sterile water to dissolve the DNA.
3. Close the tube and incubate for 10 minutes at room temperature.
4. Briefly vortex the tube and then do a quick spin (less than 5000xg) to concentrate the liquid at the bottom.
5. Store the suspended plasmid at -20°C. The DNA is stable for at least one year from date of shipping when stored at -20°C.

RefSeq: [NM_001193350.2](#)

RefSeq Size: 6446 bp

RefSeq ORF: 1422 bp

Locus ID: 4208

UniProt ID: [Q06413](#)

Cytogenetics: 5q14.3

Protein Families: Transcription Factors

Protein Pathways: MAPK signaling pathway

Gene Summary: This locus encodes a member of the MADS box transcription enhancer factor 2 (MEF2) family of proteins, which play a role in myogenesis. The encoded protein, MEF2 polypeptide C, has both trans-activating and DNA binding activities. This protein may play a role in maintaining the differentiated state of muscle cells. Mutations and deletions at this locus have been associated with severe cognitive disability, stereotypic movements, epilepsy, and cerebral malformation. Alternatively spliced transcript variants have been described. [provided by RefSeq, Jul 2010]