

## Product datasheet for **RG234199**

### **GPR176 (NM\_001271855) Human Tagged ORF Clone**

#### **Product data:**

Product Type:	Expression Plasmids
Product Name:	GPR176 (NM_001271855) Human Tagged ORF Clone
Tag:	TurboGFP
Symbol:	GPR176
Synonyms:	HB-954
Mammalian Cell Selection:	Neomycin
Vector:	pCMV6-AC-GFP (PS100010)
E. coli Selection:	Ampicillin (100 ug/mL)



[View online »](#)

**ORF Nucleotide Sequence:**

>RG234199 representing NM\_001271855  
 Red=Cloning site Blue=ORF Green=Tags(s)

TTTTGTAATACGACTCACTATAGGGCGGCCGGAATTCGTCGACTGGATCCGGTACCGAGGAGATCTGCC  
 GCC**CGGATCGCC**

ATGCCAGCTCCACTGCTTCTATTCTAGAACTTTGGAACTTCATGGTGTATGGTCACTTGCCGCA  
 CAACCGTGTCAAATCTGTACCAACAGGTTCAATAAAAACCTGGCCTGCTCGGGGATTTGTGCCAGCCT  
 GGTCTGTGTGCCCTTCGACATCATCCTCAGCACCAGTCCCTACTGTTGCTGGTGGATCTACACCATGCTC  
 TTCTGCAAGTCTCAAATTTTTGCACAAAGTATTCTGCTCTGTGACCATCCTCAGCTTCCCTGCTATTG  
 CTTTGGACAGGTACTACTCAGTCTCTATCCACTGGAGAGGAAAAATCTGATGCCAAGTCCCGTGAAC  
 GGTGATGTACATCTGGCCCATGCAGTGGTGGCCAGTGTCCCTGTGTTTGCAGTAACCAATGTGGCTGAC  
 ATCTATGCCACGTCCACCTGCACGGAAGTCTGGAGCAACTCCTTGGCCACCTGGTGTACGTTCTGGTGT  
 AATACATACCACGGTCATTGTGCCTGTGGTGGTGGTCTCTCTCTTGATACTGATCCGACGGGCCCT  
 GAGTGCCAGCCAGAAGAAGAAGTTCATCATAGCAGCGCTCCGGACCCACAGAACACCATCTCTATTCCC  
 TATGCCTCCCAGCGGGAGGCCGAGCTGCACGCCACCTGCTCTCCATGGTGTGCTTCTCATCTTGTGTA  
 CGGTGCCCTATGCCACCCTGGTCTGTACCAGACTGTGCTCAATGTCCCTGACACTTCCGCTTCTTGTCT  
 GCTCACTGCTGTTTGGCTGCCAAAAGTCTCCCTGCTGGCAAACCTGTTCTCTTTCTTACTGTGAACAAA  
 TCTGTCCGAAGTGTGATAGGGACCCTGGTGAACACACCACCGGTACAGTCGCCGTAATGTGGTCA  
 GTACAGGGAGTGGCATGGCTGAGGCCAGCCTGGAACCCAGCATAACGCTCGGGTAGCCAGCTCCTGGAGAT  
 GTTCCACATTGGGCAGCAGCAGATCTTTAAGCCACAGAGGATGAGGAAGAGAGTGGCCCAAGTACATT  
 GGCTCAGCTGACTTCCAGGCCAAGGAGATATTTAGCACCTGCCTGGAGGGAGAGCAGGGGCCACAGTTTG  
 GCCTCTGCCCCACCCCTGAGCACAGTGGACTGTATCCCAGTGGCACCCGGCAGCCCTGTGGAAACC  
 TGAACATTCCCTGATAAGTATTCCTGCAGTTTGGCTTTGGCCCTTTGAGTTGCCTCCTCAGTGGCTC  
 TCAGAGACCCGAAACAGCAAGAAGCGGCTGCTTCCCCCTTGGGCAACACCCAGAGAGCTGATCCAGA  
 CAAAGGTGCCAAGGTAGGCAGGTTGGAGCGGAAGATGAGCAGAAACAATAAAGTGAATTTTTCCAAA  
 GGTGGATTCC

**ACGCGTACGCGGCCGCTCGAG** – GFP Tag – GTTTAA

**Protein Sequence:**

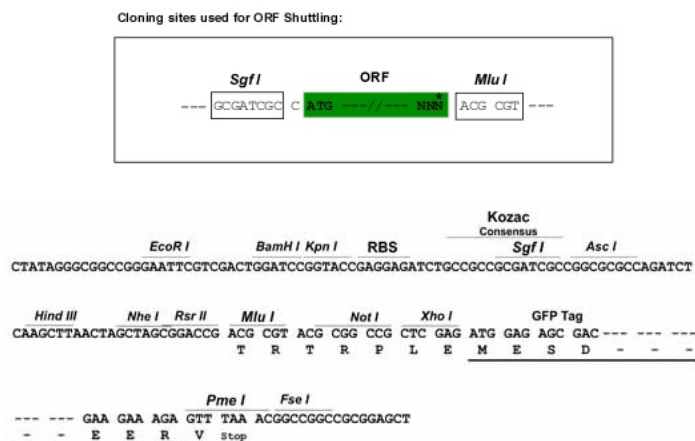
>RG234199 representing NM\_001271855  
 Red=Cloning site Green=Tags(s)

MPAPLLLISRTLGNFMVLWSTCRITTVFKSVTNRFIKNLACSGICASLVCVPFDIILSTSPHCCWIIYTML  
 FCKVVKFLHKVFCVSVTILSFPALDRYYSVLYPLERKISDAKSRELVMYIWAHVVASVPVFAVTNVAD  
 IYATSTCTEVWNSLGHLYVYLVYNITTVIVPVVVVFLFLILIRRALSASQKKKVIIAALRTPQNTISIP  
 YASQREAEHLHATLLSMVMVFIILCSVPYATLVVYQTVLNVDPDTSVFLLLTAVWLPKVSLLANPVLFLTVNK  
 SVRKCLIGTLVQLHHRYSRRNVSTGSGMAEASLEPSIRSGSQLLEMFHIGQQQIFKPTDEEESEAKYI  
 GSADFQAKEIFSTCLEGEQGPQFAPSAPPLSTVDSVSVQVAPAAPVEPETFPDKYSLQFGFGPFELPPQWL  
 SETRNSKRLPLPLGNTPEELIQTKVPKVRVERKMSRNNKVSIFPKVDS

**TRTRPLE** – GFP Tag – V

**Restriction Sites:**

Sgfl-MluI

**Cloning Scheme:**


**ACCN:** NM\_001271855

**ORF Size:** 1410 bp

**OTI Disclaimer:** The molecular sequence of this clone aligns with the gene accession number as a point of reference only. However, individual transcript sequences of the same gene can differ through naturally occurring variations (e.g. polymorphisms), each with its own valid existence. This clone is substantially in agreement with the reference, but a complete review of all prevailing variants is recommended prior to use. [More info](#)

**OTI Annotation:** This clone was engineered to express the complete ORF with an expression tag. Expression varies depending on the nature of the gene.

**Components:** The ORF clone is ion-exchange column purified and shipped in a 2D barcoded Matrix tube containing 10ug of transfection-ready, dried plasmid DNA (reconstitute with 100 ul of water).

**Reconstitution Method:**

1. Centrifuge at 5,000xg for 5min.
2. Carefully open the tube and add 100ul of sterile water to dissolve the DNA.
3. Close the tube and incubate for 10 minutes at room temperature.
4. Briefly vortex the tube and then do a quick spin (less than 5000xg) to concentrate the liquid at the bottom.
5. Store the suspended plasmid at -20°C. The DNA is stable for at least one year from date of shipping when stored at -20°C.

**RefSeq:** [NM\\_001271855.2](#)

**RefSeq Size:** 3700 bp

**RefSeq ORF:** 1413 bp

**Locus ID:** 11245

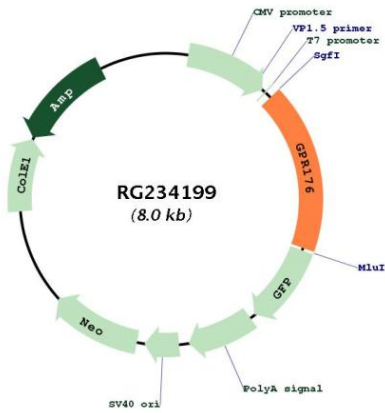
**UniProt ID:** [Q14439](#)

**Cytogenetics:** 15q14-q15.1

**Protein Families:** Druggable Genome, GPCR, Transmembrane

**Gene Summary:** Members of the G protein-coupled receptor family, such as GPR176, are cell surface receptors involved in responses to hormones, growth factors, and neurotransmitters (Hata et al., 1995 [PubMed 7893747]).[supplied by OMIM, Jul 2008]

**Product images:**



Circular map for RG234199