

Product datasheet for **RG234135**

BZW1 (NM_001207068) Human Tagged ORF Clone

Product data:

Product Type:	Expression Plasmids
Product Name:	BZW1 (NM_001207068) Human Tagged ORF Clone
Tag:	TurboGFP
Symbol:	BZW1
Synonyms:	BZAP45; Nbla10236
Mammalian Cell Selection:	Neomycin
Vector:	pCMV6-AC-GFP (PS100010)
E. coli Selection:	Ampicillin (100 ug/mL)



[View online »](#)

ORF Nucleotide Sequence:

>RG234135 representing NM_001207068
 Red=Cloning site Blue=ORF Green=Tags(s)

TTTTGTAATACGACTCACTATAGGGCGGCCGGGAATTCGTCGACTGGATCCGGTACCGAGGAGATCTGCC
 GCC**CGATCGCC**

ATGTACGGGGCGCCTGGGGCCCCGGCGCAAAGCGCCTCAGTGACTGTGGTCCGCTCGTTGCGGGCGCCG
 CACCGCAGGCGACAGGGGTGCTTTTATGAATAATCAAAAAGCAGCAAAAAGCCAACGCTATCAGGCCAGCG
 TTTTAAACTAGAAAAGAGATGAAAAGAGAGGTTTGACCCTACTCAGTTTCAAGACTGTATTATTCAA
 GGCTTAACTGAAACCGGTAAGTATTTGGAAGCAGTAGCTAAGTTTCTTGATGCTTCTGGAGCAAACTTG
 ATTACCGTCGATATGCAGAAACTCTTTGACATTCTGGTGGCTGGTGAATGCTGGCCCCAGGTGGTAC
 ACTGCCAGATGACATGATGCGTACAGATGTCTGCGTGTTCAGCCCAAGAAGATCTAGAGACCATGCAA
 GCATTTGCTCAGGTTTTTAACAAGTTAATCAGGCGCTACAATACCTGGAGAAAGTTTTGAAGTGAAG
 TAAAAAGCTGCTGCTGTTCTTGAAGGTTTTTCAGAGTCGGAGAGGAACAAGCTAGCTATGTTGACTGG
 TGTTCTTCTGGCTAATGGAACACTTAATGCATCCATTCTAATAGCCTTTATAATGAAAATTTGGTTAAA
 GAAGGAGTTTCAGCAGCTTTTGCTGTGAAGCTCTTAAATCATGGATAAATGAAAAAGATATCAATGCAG
 TAGCTGCAAGTCTTCGGAAGTCAGCATGGATAACAGACTGATGGAACCTTTCTCTGCCAATAAGCAAAG
 TGTTGAACACTTCACAAAATATTTTACTGAGGCAGGCTTGAAAGAGCTTTCAGAAATATGTTCCGGAATCAG
 CAAACCATCGGAGCTCGTAAGGAGCTCCAGAAAGAACTCAAGAACAGATGTCCCGTGGTATCCATTTA
 AGGATATAATTTTATATGTCAAGGAGGAGATGAAAAAACAACATCCCAGAGCCAGTTGTCATCGGAAT
 AGTCTGGTCAAGTGAATGAGCACTGTGGAATGGAACAAAAAAGAGGAGCTTGTAGCAGAGCAAGCCATC
 AAGCACTTGAAGCAATACAGCCCTCTACTTGTGCCTTTACTACTCAAGGTCAGTCTGAGCTGACTCTGT
 TACTGAAGATTCAGGAGTATTGCTATGACAACATTCATTTTCATGAAAGCCTTCAGAAAAATAGTGGTGCT
 TTTTTATAAAGCTGAAGTCTGAGCGAGGAGCCATTTTGAAGTGGTATAAAGATGCACATGTTGCCAAAG
 GGAAGAGTGTTTTCTTGGCAATGAAAAAGTTTGTAGAATGGCTCAAAAATGCTGAAGAAGAATCTG
 AATCTGAAGCTGAAGAAGGTGAC

ACGCGTACGCGGCCGCTCGAG - GFP Tag - GTTTAA

Protein Sequence:

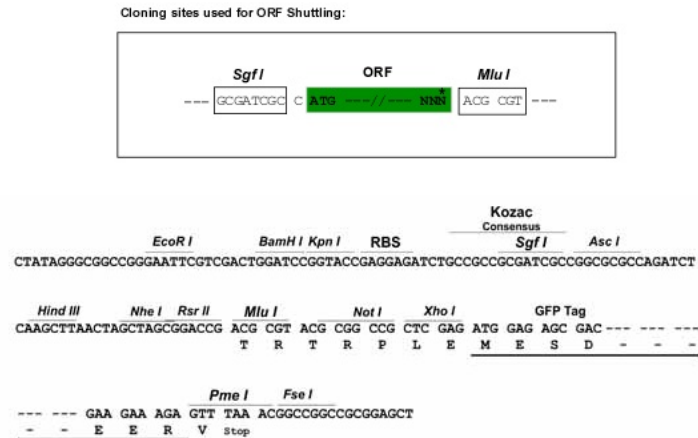
>RG234135 representing NM_001207068
 Red=Cloning site Green=Tags(s)

MYGAPGAPAQSASVTVVRSLRRPPPQATGVSFMNNQKQKPTLSGQRFKTRKRDEKERFDPTQFQDCIIQ
 GLTETGTDLEAVAKFLDASGAKLDYRRAETLFDILVAGGMLAPGGTLADMMRTDVCVFAAQEDLETMQ
 AFAQVFNKLIIRRYKYLEKGFEDVKKLLLFLKGFSESERNKLA MLTGVL LANGTLNASILNSLYNENLVK
 EGVSAAFVAVKLFKSWINEKDINAVAASLRKVSMDNRLMELFPANKQSVHF TKYFTEAGLKELSEYVRNQ
 QTIGARKELQKELQE QMSRGDPFKDIIILYVKEEMKNNIPEPVVIGIVWSSVMSTVEWNKKEELVAEQAI
 KHLKQYSPLLAFTTQSQSEL TLLKIQEYCYDNIHFMKAFQKIVVLFYKAEVLSEEPILKWKYKDAHVAK
 GKSVFLEQMKKFVWELKNAEEESESEAEEDG

TRTRPLE - GFP Tag - V

Restriction Sites:

SgfI-MluI

Cloning Scheme:


ACCN: NM_001207068

ORF Size: 1353 bp

OTI Disclaimer: The molecular sequence of this clone aligns with the gene accession number as a point of reference only. However, individual transcript sequences of the same gene can differ through naturally occurring variations (e.g. polymorphisms), each with its own valid existence. This clone is substantially in agreement with the reference, but a complete review of all prevailing variants is recommended prior to use. [More info](#)

OTI Annotation: This clone was engineered to express the complete ORF with an expression tag. Expression varies depending on the nature of the gene.

Components: The ORF clone is ion-exchange column purified and shipped in a 2D barcoded Matrix tube containing 10ug of transfection-ready, dried plasmid DNA (reconstitute with 100 ul of water).

Reconstitution Method:

1. Centrifuge at 5,000xg for 5min.
2. Carefully open the tube and add 100ul of sterile water to dissolve the DNA.
3. Close the tube and incubate for 10 minutes at room temperature.
4. Briefly vortex the tube and then do a quick spin (less than 5000xg) to concentrate the liquid at the bottom.
5. Store the suspended plasmid at -20°C. The DNA is stable for at least one year from date of shipping when stored at -20°C.

RefSeq: [NM_001207068.3](#)

RefSeq Size: 1496 bp

RefSeq ORF: 1356 bp

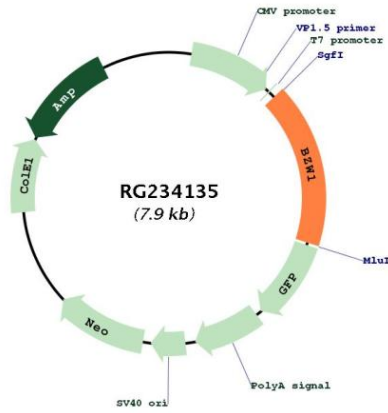
Locus ID: 9689

UniProt ID: [Q7L1Q6](#)

Cytogenetics: 2q33.1

Gene Summary: Enhances histone H4 gene transcription but does not seem to bind DNA directly.
 [UniProtKB/Swiss-Prot Function]

Product images:



Circular map for RG234135