

Product datasheet for **RG234131**

HNRPH1 (HNRNPH1) (NM_001257293) Human Tagged ORF Clone

Product data:

Product Type:	Expression Plasmids
Product Name:	HNRPH1 (HNRNPH1) (NM_001257293) Human Tagged ORF Clone
Tag:	TurboGFP
Symbol:	HNRNPH1
Synonyms:	hnRNPH; HNRPH; HNRPH1
Mammalian Cell Selection:	Neomycin
Vector:	pCMV6-AC-GFP (PS100010)
E. coli Selection:	Ampicillin (100 ug/mL)



[View online »](#)

ORF Nucleotide Sequence:

>RG234131 representing NM_001257293
 Red=Cloning site Blue=ORF Green=Tags(s)

TTTTGTAATACGACTCACTATAGGGCGGCCGGAATTCGTGACTGGATCCGGTACCGAGGAGATCTGCC
 GCC**GCGATCGCC**

ATGATGTTGGGCACGGAAGGTGGAGAGGGATTCGTGGTGAAGGTCGGGGCTTGCCTGGTCTTGCTCGG
 CCGATGAAGTGCAGAGGTTTTTCTGACTGCAAATTCAAAATGGGGCTCAAGGTATTCGTTTCATCTA
 CACCAGAGAAGGCAGACCAAGTGCCGAGGCTTTTGTGAACCTGAATCAGAAGATGAAGTCAAATGGCC
 CTGAAAAAAGACAGAAAATATGGGACACAGATATGTTGAAGTATTCAAGTCAAACAACGTTGAAATGG
 ATTGGGTGTTGAAGCATACTGGTCCAAATAGTCTGACACGGCCAATGATGGCTTTGTACGGCTTAGAGG
 ACTTCCCTTTGGATGTAGCAAGGAAGAAATTTTCAGTCTTCTCAGGGTTGAAATCGTGCCAAATGGG
 ATAACATTGCCGGTGGACTTCCAGGGGAGGAGTACGGGGAGGCCTTCGTGCAGTTTGCTTCACAGGAAA
 TAGCTGAAAAGGCTCTAAAGAAACACAAGGAAAGAATAGGGCACAGGTATATTGAAATCTTTAAGAGCAG
 TAGAGCTGAAGTTAGAATCATTATGATCCACCACGAAAGCTTATGGCCATGCAGCGCCAGGTCCTTAT
 GACAGACCTGGGGCTGGTAGAGGTATAACAGCATTGGCAGAGGAGCTGGCTTTGAGAGGATGAGGCGTG
 GTGCTTATGGTGGAGGCTATGGAGGCTATGATGATTACAATGGCTATAATGATGGCTATGGATTTGGGTC
 AGATAGATTTGGAAGAGACCTCAATTACTGTTTTTTCAGGAATGTCTGATCACAGATACGGGGATGGTGGC
 TCTACTTTCCAGAGCACAAACAGGACACTGTGTACACATGCGGGGATTACCTTACAGAGCTACTGAGAATG
 ACATTTATAATTTTTTCCACCGCTCAACCCTGTGAGAGTACACATTGAAATTTGGTCTGATGGCAGAGT
 AACTGGTGAAGCAGATGTCGAGTTCGAACTCATGAAGATGCTGTGGCAGCTATGTCAAAGACAAAAGCA
 AATATGCAACACAGATATGTAGAATCTTCTTGAATTTACAGCAGGAGCAAGCGGTGGTCTTACGAAC
 ACAGATATGTAGAATCTTCTTGAATTTACAGCAGGAGCAAGCGGTGGTCTTATGGTAGCCAAATGAT
 GGGAGGCATGGGCTTGTCAAACCAAGTCCAGCTACGGGGGCCAGCCAGCCAGCAGCTGAGTGGGGGTTAC
 GGAGGCGCTACGGTGGCCAGAGCAGCATGAGTGGATACGACCAAGTTTTACAGGAAAATCCAGTGATT
 TTCAATCAAACATTGCA

ACGCGTACGCGGCCGCTCGAG - GFP Tag - GTTTAA

Protein Sequence:

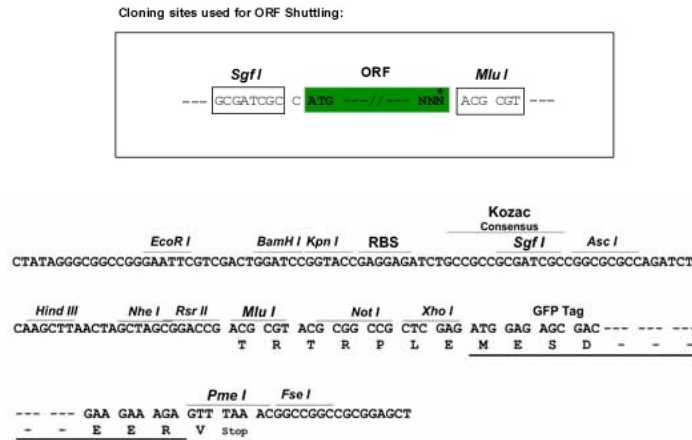
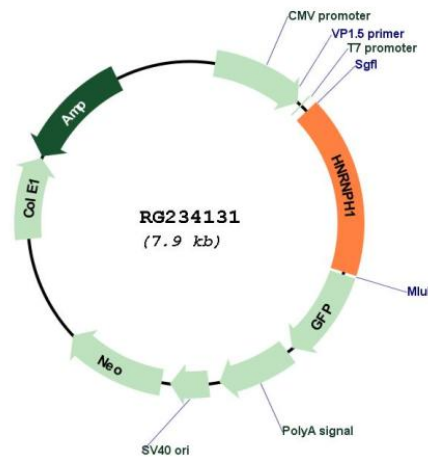
>RG234131 representing NM_001257293
 Red=Cloning site Green=Tags(s)

MMLGTEGGEGFVVKVRLPWSCSADEVQRFFSDCKIQNGAQGIRFIYTREGRPSGEAFVELESEDEVKLA
 LKKDRETMGHRYVEVFKSNVEMDWLKHGPNPDTANDGFVRLRGLPFGCSKEEIVQFFSGLIIVPNG
 ITLPVDFQGRSTGEAFVQFASQIEAEKALKKKKERIGHRYIEIFKSSRAEVRTHYDPPRKLMMAMQRP
 DRPGAGRGYNSIGRGAGFERMRRGAYGGYGGYDDYNGYNDGYGFGSDRFGRDLNYCFSGMSDHRYG
 DGGSTFQSTTGHCVHMRGLPYRATENDIYNFFSPLNPVRVHIEIGPDGRVTGEADVEFATHEDAVAAM
 SKDKANMQHRYVELFLNSTAGASGGAYEHRYVELFLNSTAGASGGAYGSQMMGMGLSNQSSYGGP
 ASQQLSGGYGGYGGQSSMSGYDQVLQENSSDFQSNIA

TRTRPLE - GFP Tag - V

Restriction Sites:

SgfI-MluI

Cloning Scheme:

Plasmid Map:


ACCN: NM_001257293

ORF Size: 1347 bp

OTI Disclaimer: The molecular sequence of this clone aligns with the gene accession number as a point of reference only. However, individual transcript sequences of the same gene can differ through naturally occurring variations (e.g. polymorphisms), each with its own valid existence. This clone is substantially in agreement with the reference, but a complete review of all prevailing variants is recommended prior to use. [More info](#)

OTI Annotation: This clone was engineered to express the complete ORF with an expression tag. Expression varies depending on the nature of the gene.

Components:	The ORF clone is ion-exchange column purified and shipped in a 2D barcoded Matrix tube containing 10ug of transfection-ready, dried plasmid DNA (reconstitute with 100 ul of water).
Reconstitution Method:	<ol style="list-style-type: none">1. Centrifuge at 5,000xg for 5min.2. Carefully open the tube and add 100ul of sterile water to dissolve the DNA.3. Close the tube and incubate for 10 minutes at room temperature.4. Briefly vortex the tube and then do a quick spin (less than 5000xg) to concentrate the liquid at the bottom.5. Store the suspended plasmid at -20°C. The DNA is stable for at least one year from date of shipping when stored at -20°C.
RefSeq:	NM_001257293.2
RefSeq Size:	2304 bp
RefSeq ORF:	1350 bp
Locus ID:	3187
UniProt ID:	P31943
Cytogenetics:	5q35.3
Gene Summary:	<p>This gene encodes a member of a subfamily of ubiquitously expressed heterogeneous nuclear ribonucleoproteins (hnRNPs). The hnRNPs are RNA binding proteins that complex with heterogeneous nuclear RNA. These proteins are associated with pre-mRNAs in the nucleus and appear to influence pre-mRNA processing and other aspects of mRNA metabolism and transport. While all of the hnRNPs are present in the nucleus, some may shuttle between the nucleus and the cytoplasm. The hnRNP proteins have distinct nucleic acid binding properties. The protein encoded by this gene has three repeats of quasi-RRM domains that bind to RNA and is very similar to the family member HNRPF. This gene may be associated with hereditary lymphedema type I. Alternatively spliced transcript variants have been described [provided by RefSeq, Mar 2012]</p>