

Product datasheet for **RG234109**

KAT7 (NM_001199158) Human Tagged ORF Clone

Product data:

Product Type:	Expression Plasmids
Product Name:	KAT7 (NM_001199158) Human Tagged ORF Clone
Tag:	TurboGFP
Symbol:	KAT7
Synonyms:	HBO1; HBOA; MYST2; ZC2HC7
Mammalian Cell Selection:	Neomycin
Vector:	pCMV6-AC-GFP (PS100010)
E. coli Selection:	Ampicillin (100 ug/mL)
ORF Nucleotide Sequence:	>RG234109 representing NM_001199158 Red=Cloning site Blue=ORF Green=Tags(s)

TTTTGTAATACGACTCACTATAGGGCGGCCGGAATTCGTCGACTGGATCCGGTACCGAGGAGATCTGCC
GCC**CGATCGCC**

ATGCCGGAAGGAAGAGGAATGCAGGCAGTAGTTCAGATGGAACCGAAGATTCGATTTTTCTACAGATC
TCGAGCACACAGACAGTTCAGAAAGTGTGGCACATCCCGACGATCTGCTCGAGTCACCCGCTCCTCAGC
CAGGCTAAGCCAGAGTTCCTCAAGGACACCTTACAGGAAAACATGAGAGACATTTCTCCATCTCAGGATGC
CCACTGTATCATAACCTCTCAGCTGACGAATGCAAGGCACCAACGGAGAGGCAGCTTCGATATAAGGAAA
AAGTGGCTGAACCTCAGGAAGAAAAGAAATCTGGACTGAGCAAAGAACAGAAAGAGAAATATATGGAACA
CAGACAGACCTATGGGAACACACGGGAACCTCTTTTAGAAAACCTGACAAGCGAGTATGACTTGGATCTT
TTCCGAAGAGCACAAGCCCGGGCTTCAGAGGATTTGGAGAAGTTAAGGCTGCAAGGCCAAATCACAGAGG
GAAGCAACATGATTAACAATTGCTTTTGGCCGCTATGAGCTTGATACCTGGTATCATTCTCCATATCC
TGAAGAAATATGCACGGCTGGGACGTCTCTATATGTGTGAATTCTGTTAAAAATATATGAAGGCCAAACG
ATACTCCGCCGCACATGGCCAAATGTGTGTGGAAACACCCACCTGGTGATGAGATATATCGCAAAGGTT
CAATCTCTGTGTTTGAAGTGGATGGCAAGAAAAACAAGATCTACTGCCAAAACCTGTGCCTGTTGGCCAA
ACTTTTTCTGGACCACAAGACATTATATATGATGTGGAGCCCTCCTGTTCTATGTTATGACAGAGGCG
GACAACACTGGCTGTCACCTGATTGGATATTTTTCTAAGGAAAAGAATTCATTCCCTCAACTACAACGTCT
CCTGTATCCTTACTATGCCTCAGTACATGAGACAGGGCTATGGCAAGATGCTTATTGATTTCAAGTTATTT
GCTTTCCAAAGTGAAGAAAAAGTTGGCTCCCCAGAACGTCCACTCTCAGATCTGGGGCTTATAAGCTAT
CGCAGTACTGGAAGAAGTACTTCTCCGCTACCTGCATAATTTTCAAGGCAAAGAGATTCTATCAAAG
AAATCAGTCAGGAGACGGCTGTGAATCCTGTGGACATTGTGAGCACTCTGCAAGCCCTCAGATGCTCAA
ATACTGGAAGGGAAAACACCTAGTTTTAAAGAGACAGGACCTGATTGATGAGTGGATAGCCAAAGAGGCC
AAAAGTCCAACCTCAATAAAACCATGGATCCCAGCTGCTTAAATGGACCCCTCCCAAGGGCACT

ACGCGTACGCGGCCGCTCGAG - GFP Tag - GTTTAA



[View online »](#)

Protein Sequence: >RG234109 representing NM_001199158
Red=Cloning site Green=Tags(s)

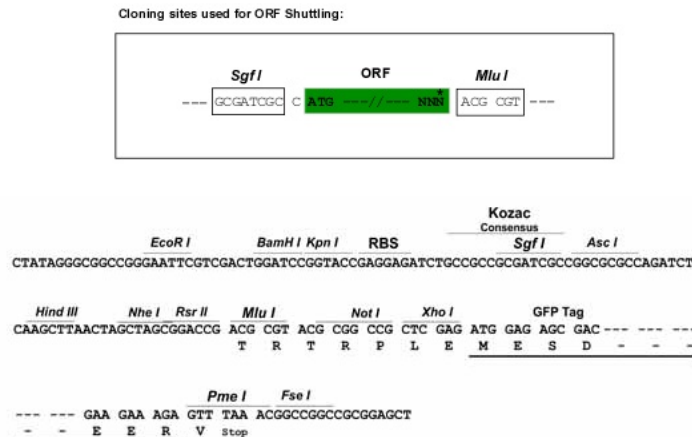
MPRRKRNAGSSSDGTEDSDFSTDLEHTDSSESDGTSRRRSARVTRSSARLSQSSQGHLTGKHERHFSISGC
 PLYHNLSADECKAPTERQLRYKEKVAELRKKRNSGLSKEQKEKYMHRQTYGNTREPLENLTSEYDLDL
 FRRAQARASEDELEKLRQGITTEGSMIKTIAFGRYELDTWYHSPYPEEYARLGRLYMCEFLKYMKSQT
 ILRRHMAKCVWKHPPGDEIYRKGSISVFEVDGKKNKIYQNLCLLAKLFLDHKTLYYDVEPFLFYVMTEA
 DNTGCHLIGYFSKEKNSFLNYNVSCILTMPQYMRQGYGKMLIDFSYLLSKVEEKVGSPPERLSDLGLISY
 RSYWKEVLLRRLHNFQGKEISIKEISQETAVNPVDIVSTLQALQMLKYWKGKHLVLKRQDLIDEWIAKEA
 KRSNSNKTMDPSCLKWTPPKGT

TRTRPLE – GFP Tag – V

Restriction Sites:

SgfI-MluI

Cloning Scheme:



ACCN: NM_001199158

ORF Size: 1326 bp

OTI Disclaimer: The molecular sequence of this clone aligns with the gene accession number as a point of reference only. However, individual transcript sequences of the same gene can differ through naturally occurring variations (e.g. polymorphisms), each with its own valid existence. This clone is substantially in agreement with the reference, but a complete review of all prevailing variants is recommended prior to use. [More info](#)

OTI Annotation: This clone was engineered to express the complete ORF with an expression tag. Expression varies depending on the nature of the gene.

Components: The ORF clone is ion-exchange column purified and shipped in a 2D barcoded Matrix tube containing 10ug of transfection-ready, dried plasmid DNA (reconstitute with 100 ul of water).

Reconstitution Method:

1. Centrifuge at 5,000xg for 5min.
2. Carefully open the tube and add 100ul of sterile water to dissolve the DNA.
3. Close the tube and incubate for 10 minutes at room temperature.
4. Briefly vortex the tube and then do a quick spin (less than 5000xg) to concentrate the liquid at the bottom.
5. Store the suspended plasmid at -20°C. The DNA is stable for at least one year from date of shipping when stored at -20°C.

RefSeq: [NM_001199158.1](#), [NP_001186087.1](#)

RefSeq Size: 3157 bp

RefSeq ORF: 1329 bp

Locus ID: 11143

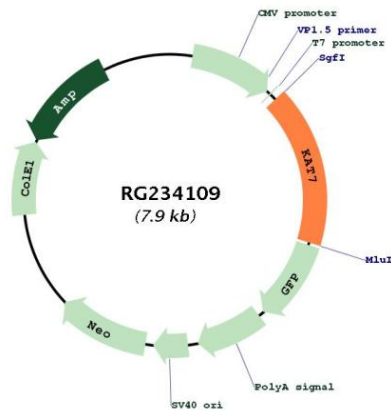
UniProt ID: [O95251](#)

Cytogenetics: 17q21.33

Protein Families: Druggable Genome, Stem cell - Pluripotency, Transcription Factors

Gene Summary: The protein encoded by this gene is part of the multimeric HBO1 complex, which possesses histone H4-specific acetyltransferase activity. This activity is required for functional replication origins and is involved in transcriptional activation of some genes. In both cases, the acetylation of histone H4 helps unfold chromatin so that the DNA can be accessed and replicated or transcribed. [provided by RefSeq, Oct 2016]

Product images:



Circular map for RG234109