

Product datasheet for **RG234103**

DEF8 (NM_001242816) Human Tagged ORF Clone

Product data:

Product Type:	Expression Plasmids
Product Name:	DEF8 (NM_001242816) Human Tagged ORF Clone
Tag:	TurboGFP
Symbol:	DEF8
Mammalian Cell Selection:	Neomycin
Vector:	pCMV6-AC-GFP (PS100010)
E. coli Selection:	Ampicillin (100 ug/mL)
ORF Nucleotide Sequence:	>RG234103 representing NM_001242816 Red=Cloning site Blue=ORF Green=Tags(s)

TTTTGTAATACGACTCACTATAGGGCGGCCGGAATTCGTCGACTGGATCCGGTACCGAGGAGATCTGCC
GCC**CGATCGCC**

ATGGAATATGATGAGAAGCTGGCCGTTCCGGCAGGCCACCTCAACCCCTTCAACAAGCAGTCTGGGC
CGAGACAGCATGAGCAGGGCCCTGGGGAGGAGGTCCCGGACGTCCTCTGAAGAGGCCCTGCCTGAGCT
GCCCCCTGGGGAGCCGGAATTCGCTGCCCTGAACCGTGATGGATCTCGGCCTGTCTGAGGACCACTTC
TCCCGCCCTGTGCTGCGCAGGCCGATCGAGGAGTGCAAGCAGGTGATTCTGGAGCTGCCCGAGCAGTCGG
AGAAGCAGAAGGATGCCGTGGTGGCAGCTACCCACCTCCGGCTGAAGCTCCAGGAGTGAAGACCCCAA
TGAGGATGAGCCAAACATCCGAGTGCTCCTTGAGCACCGCTTTTACAAGGAGAAGCAAGAGCGTCAAG
CAGACCTGTGACAAGTGTAAACACCATCATCTGGGGCTCATTACAGACCTGGTACACCTGCACAGGTTGT
ATTACCGTGTACAGTAAGTGCTTGAACCTCATCTCCAAGCCCTGTGTGAGCTCCAAAGTCAAGCCACCA
AGCTGAATACGAAGTGAACATCTGCCCTGAGACAGGGCTGGACAGCCAGGATTACCGCTGTGCCGAGTGC
CGGGCGCCATCTCTCTGCGGGTGTGCCAGTGAGGCCAGGCAGTGCAGTACACCGGCCAGTACTACT
GCAGCCACTGCCACTGGAACGACCTGGCTGTGATCCCTGCACGCGTTGTACACAAGTGGGACTTTGAGCC
TCGAAAGTTTCTCGCTGCAGCATGCGTACCTGGCGCTGATGGTGTCTCGGCCGTTACTCAGGCTCCGG
GAGATCAACCCCTGCTGTTTCACTACGTGGAGGAGCTGGTGGAGATTGCAAGCTGCGCCAGGACATCC
TGCTCATGAAGCCGTAATTCATCACCTGCAGGGAGGCCATGGAGGCTCGTCTGCTGCTGCAGCTCCAGGA
TCGGCAGCATTTTGTGGAGAACGACGAGATGTAATCTGTCCAGGACCTCCTGGACGTGCATGCCGGCCG
CTGGGCTGCTCGCTCACCAGATCCACACGCTCTTCGCCAAGCACATCAAGCTGGACTGCGAGCGGTGCC
AGGCCAAGGGCTTCGTGTGTGAGCTCTGCAGAGAGGGCGACGTGCTGTTCCCGTTTCGACAGCCACAGTC
TGTGTGCCCGACTGCTCCGCGTCTCCACAGGGACTGCTACTACGACAAGTCCACCACTTGTCCCAAG
TGTGCCCGCTCAGCCTGAGGAAGCAGTCGCTCTCCAGGAGCCAGGTCCCGATGTGGAGGCC

AGCGGACCGACGCGTACGCGGCCGCTCGAG - GFP Tag - GTTTAA



[View online »](#)

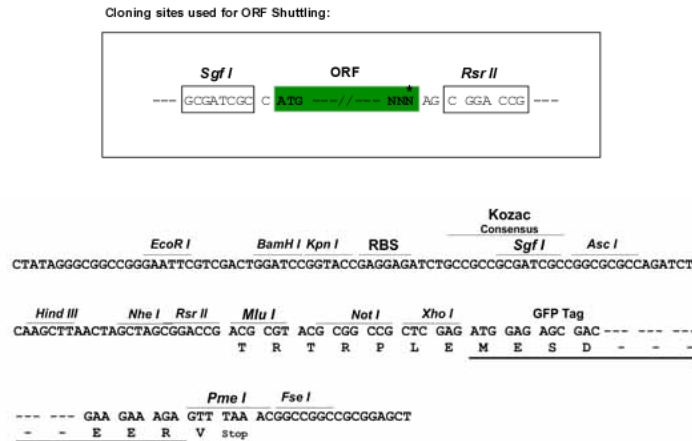
Protein Sequence: >RG234103 representing NM_001242816
Red=Cloning site Green=Tags(s)

MEYDEKLARFRQAHLNPFNKQSGPRQHEQGPGEVDPVTPEEALPELPPGEPEFRPCPERVMDLGLSEDF
 SRPVLRQAIIEECKQVILELPEQSEKQKDAVVRLIHLRLKQELKDPNEDEPNIRVLEHRFYKEKSKSVK
 QTCDKCNTIIWGLIQTWYTCTGCYYRCHSKCLNLSKPCVSSKVSHQAEYELNICPETGLDSQDYRCAEC
 RAPISLRGVPSEARQCDYTGQYYCSHCHWNDLAVIPARVVHNDWFEPKRVSRCSMRYLALMVSRLRRLR
 EINPLLFYVEELVEIRKLRQDILLMKPYFITCREAMEARLLLQLQDRQHFVENDEMYSVQDLLDVHAGR
 LGCSLTEIHTLFAKHIKLDCERCQAKGFVCELCREGDVLPFDSHTSVCADCSAVFHRDCYYDNSTTCPK
 CARLSLRKQSLFQEPGPDVEA

SGPTRRRLE – GFP Tag – V

Restriction Sites: SgfI-RsrII

Cloning Scheme:



ACCN: NM_001242816

ORF Size: 1323 bp

OTI Disclaimer: The molecular sequence of this clone aligns with the gene accession number as a point of reference only. However, individual transcript sequences of the same gene can differ through naturally occurring variations (e.g. polymorphisms), each with its own valid existence. This clone is substantially in agreement with the reference, but a complete review of all prevailing variants is recommended prior to use. [More info](#)

OTI Annotation: This clone was engineered to express the complete ORF with an expression tag. Expression varies depending on the nature of the gene.

Components: The ORF clone is ion-exchange column purified and shipped in a 2D barcoded Matrix tube containing 10ug of transfection-ready, dried plasmid DNA (reconstitute with 100 ul of water).

Reconstitution Method:

1. Centrifuge at 5,000xg for 5min.
2. Carefully open the tube and add 100ul of sterile water to dissolve the DNA.
3. Close the tube and incubate for 10 minutes at room temperature.
4. Briefly vortex the tube and then do a quick spin (less than 5000xg) to concentrate the liquid at the bottom.
5. Store the suspended plasmid at -20°C. The DNA is stable for at least one year from date of shipping when stored at -20°C.

RefSeq: [NM_001242816.2](#)

RefSeq Size: 3632 bp

RefSeq ORF: 1326 bp

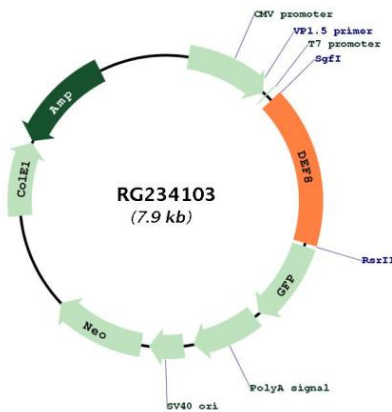
Locus ID: 54849

UniProt ID: [Q6ZN54](#)

Cytogenetics: 16q24.3

Gene Summary: Positively regulates lysosome peripheral distribution and ruffled border formation in osteoclasts. Involved in bone resorption.[UniProtKB/Swiss-Prot Function]

Product images:



Circular map for RG234103