

Product datasheet for **RG234102**

PLA1A (NM_001206960) Human Tagged ORF Clone

Product data:

Product Type: Expression Plasmids
Product Name: PLA1A (NM_001206960) Human Tagged ORF Clone
Tag: TurboGFP
Symbol: PLA1A
Synonyms: PS-PLA1; PSPLA1
Mammalian Cell Selection: Neomycin
Vector: pCMV6-AC-GFP (PS100010)
E. coli Selection: Ampicillin (100 ug/mL)
ORF Nucleotide Sequence: >RG234102 representing NM_001206960
 Red=Cloning site Blue=ORF Green=Tags(s)

TTTTGTAATACGACTCACTATAGGGCGCCGGGAATTCGTCGACTGGATCCGGTACCGAGGAGATCTGCC
 GCC**CGATCGCC**

ATGCCCCAGGTCCCTGGGAGAGCTGCTTCTGGGTGGGGGCCTCATTTTGTGGCTCAGCGTTGGAAGTT
 CAGGGGATGCACCTCTACCCACAGCCAAAGTGCCTGACTTCCAGAGCGCCAACCTTTTTGAAGGCAC
 CGATCTCAAAGTCCAGTTTCTCCTCTTTGTCCCTTCGAATCCTAGCTGTGGGCAGCTAGTAGAAGGAAGC
 AGTGACCTCCAAAACCTCTGGGTTCAATGCCACTCTGGGAACCAACTAATTATCCATGGATTGAGGTTT
 TAGGAACAAAGCCTTCTGGATTGACACATTTATTAGAACCCTTCTGCGTGCAACGAATGCTAATGTGAT
 TGCCGTGGACTGGATTTATGGGTCTACAGGAGTCTACTTCTCAGCTGTGAAAAATGTGCTGGGTGTGTCG
 GAATCCTCAATCCACATCATTGGTGTAGCCTGGGGGCCACGTTGGGGGCATGGTGGGACAGCTCTTCG
 GAGGCCAGCTGGGACAGATCACAGGCCTGGACCCCGCTGGACCTGAGTACACCAGGGCCAGTGTGGAAGA
 GCGCTTGGATGTGGAGATGCCCTTTCGTGGAAGCCATCCACACAGACACCGACAATTTGGGTATTCGG
 ATTCCCGTTGGACATGTGGACTACTTCGTCAACGGAGGCCAAGACCAACCTGGCTGCCACCTTCTTTT
 ACGCAGTTATAGTTATCTGATCTGTGATCACATGAGGGCTGTGCACCTCTACATCAGCGCCCTGGAGAA
 TTCTGTCCACTGATGGCCTTTCCTGTGCCAGCTACAAGGCCTCCTTGTGGACGCTGTCTGGATTGC
 TTTAACCTTTTCTGCTTTCCTGCCAAGGATAGGACTGGTGAACAAGTGGTGTCAAGATAGAGCCGC
 TCCCAAGGAAGTAAAAGTCTACCTCCTGACTACTTCCAGTGCTCCGACTGCATGCATCACAGCCCTCGT
 GGAGTTTCACTTGAAGGAAGTGAAGAAACAGGACACCAACATCGAGTTACCTTCTTAGCAGTAACATC
 ACCTTTCATCTAAGATCACCATACCTAAGCAGCAACGCTATGGGAAAGGAATCATAGCCCATGCCACCC
 CACAATGCCAGATAAACCAAGTGAATTTCAAGTTTCAGTCTTCCAACCGAGTTTGGAAAAAGACCCGGAC
 TACCATTATTGGGAAGTTCTGCACTGCCCTTTGCCTGTCAATGACAGAGAAAAGATGGTCTGCTTACCT
 GAACCAAGTGAAGTACAAGCAAGTGTGACTGTTTCTGTGACCTGAAGATAGCCTGTGTG

ACGCGTACGCGGCCGCTCGAG - GFP Tag - GTTTAA



[View online »](#)

Protein Sequence: >RG234102 representing NM_001206960
 Red=Cloning site Green=Tags(s)

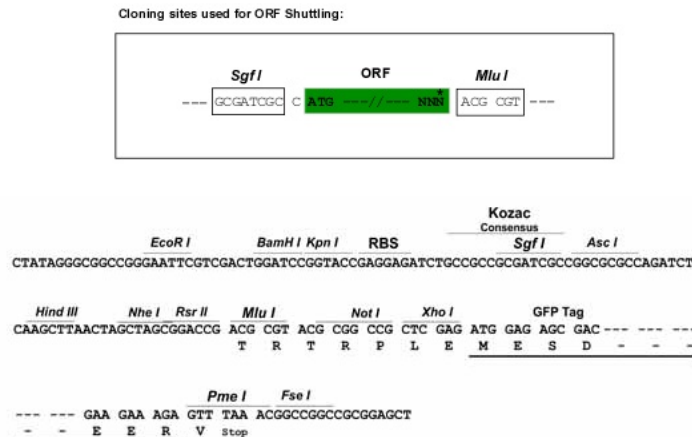
MPPGPWESCFWVGGLILWLSVGSSGDAPPTPQPKCADFQSANLFEGTDLKVQFLLFVPSNPSCGQLVEGS
 SDLQNSGFNATLGTKLI IHGFRVLGTKPSWIDTFIRTLRATNANVIAVDWIYGSTGVYFSAVKNVLGVS
 ESSIIHIGVSLGAHVGGMVGQLFGGQLGQITGLDPAGPEYTRASVEERLDAGDALFVEAIHTDNDLGR
 IPVGHVDYFVNGGQDQPGCPTFFYAGYSYLICDHMRVHLYISALENSCPLMAFPCCASYKAFLAGRCLDC
 FNPFLSCPRIGLVEQGGVKIEPLPKVKVYLLTTSSAPYCMHHSLEVEFHLKELRNKDTNIEVTFLSSNI
 TSSSKITIPKQRYGKGI AHATPQCINQVKFKFQSSNRVWKKDRTTIIGKFACTALLPVNDREKMVCLP
 EPVNLQASVTVSCDLKIACV

TRTRPLE – GFP Tag – V

Restriction Sites:

SgfI-MluI

Cloning Scheme:



ACCN: NM_001206960

ORF Size: 1320 bp

OTI Disclaimer: The molecular sequence of this clone aligns with the gene accession number as a point of reference only. However, individual transcript sequences of the same gene can differ through naturally occurring variations (e.g. polymorphisms), each with its own valid existence. This clone is substantially in agreement with the reference, but a complete review of all prevailing variants is recommended prior to use. [More info](#)

OTI Annotation: This clone was engineered to express the complete ORF with an expression tag. Expression varies depending on the nature of the gene.

Components: The ORF clone is ion-exchange column purified and shipped in a 2D barcoded Matrix tube containing 10ug of transfection-ready, dried plasmid DNA (reconstitute with 100 ul of water).

Reconstitution Method:

1. Centrifuge at 5,000xg for 5min.
2. Carefully open the tube and add 100ul of sterile water to dissolve the DNA.
3. Close the tube and incubate for 10 minutes at room temperature.
4. Briefly vortex the tube and then do a quick spin (less than 5000xg) to concentrate the liquid at the bottom.
5. Store the suspended plasmid at -20°C. The DNA is stable for at least one year from date of shipping when stored at -20°C.

RefSeq: [NM_001206960.1](#), [NP_001193889.1](#)

RefSeq Size: 1801 bp

RefSeq ORF: 1323 bp

Locus ID: 51365

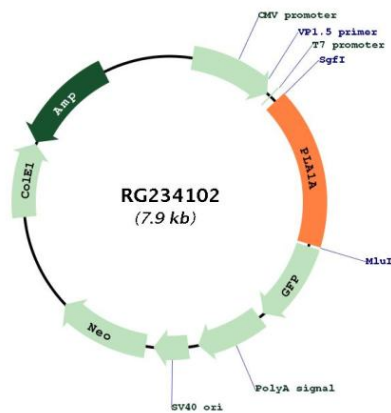
UniProt ID: [Q53H76](#)

Cytogenetics: 3q13.33

Protein Families: Druggable Genome, Secreted Protein

Gene Summary: The protein encoded by this gene is a phospholipase that hydrolyzes fatty acids at the sn-1 position of phosphatidylserine and 1-acyl-2-lysophosphatidylserine. This secreted protein hydrolyzes phosphatidylserine in liposomes. Three transcript variants encoding different isoforms have been found for this gene.[provided by RefSeq, May 2011]

Product images:



Circular map for RG234102