

Product datasheet for **RG234086**

DEF8 (NM_001242819) Human Tagged ORF Clone

Product data:

Product Type:	Expression Plasmids
Product Name:	DEF8 (NM_001242819) Human Tagged ORF Clone
Tag:	TurboGFP
Symbol:	DEF8
Mammalian Cell Selection:	Neomycin
Vector:	pCMV6-AC-GFP (PS100010)
E. coli Selection:	Ampicillin (100 ug/mL)
ORF Nucleotide Sequence:	>RG234086 representing NM_001242819 Red=Cloning site Blue=ORF Green=Tags(s)

TTTTGTAATACGACTCACTATAGGGCGGCCGGAATTCGTCGACTGGATCCGGTACCGAGGAGATCTGCC
GCC**CGATCGCC**

ATGGAATATGATGAGAAGCTGGCCGTTCCGGCAGGCCACCTCAACCCCTTCAACAAGCAGTCTGGGC
CGAGACAGCATGAGCAGGGCCCTGGGGAGGAGGTCCCGGACGTCCTCTGAAGAGGCCCTGCCTGAGCT
GCCCCCTGGGGAGCCGGAATCCGCTGCCCTGAACCGTGATGGATCTCGGCCTGTCTGAGGACCACTTC
TCCCGCCCTGTGGGTCTGTTCCCTGGCCTCTGACGTCCAGCAGCTGCGGCAGGCGATCGAGGAGTGAAGC
AGGTGATTCTGGAGCTGCCCGAGCAGTCGGAGAAGCAGAAGGATGCCGTGGTGGCAGCTATCCACCTCCG
GCTGAAGCTCCAGGAGCTGAAGGACCCCAATGAGGATGAGCCAAACATCCGAGTGTCTCTTGAGCACCGC
TTTTACAAGGAGAAGAGCAAGAGCGTCAAGCAGACCTGTGACAAGTGAACACCATCATCTGGGGGCTCA
TTCAGACCTGGTACACCTGCACAGGGTGTATTACCGCTGTACAGTAAGTGCTTGAACCTCATCTCCAA
GCCCTGTGTGAGCTCCAAAGTCAGCCACCAAGCTGAATACGAACTGAACATCTGCCCTGAGACAGGGCTG
GACAGCCAGGATTACCGCTGTGCCGAGTGCCGGGCGCCATCTCTCTGCGGGGTGTGCCAGTGAGGCCA
GGCAGTGCAGTACACCGCCAGTACTACTGCAGCCACTGCCACTGGAACGACCTGGCTGTGATCCCTGC
ACGCGTTGTACACAAGTGGGACTTTGAGCCTCGAAAGTTTCTCGCTGCAGCATGCGCTACCTGGCGCTG
ATGGTGTCTCGGCCGTAAGTACTCAGGCTCCGGGAGATCAACCCTCTGCTGTTGAGTACGTGGAGGAGCTGG
TGGAGATTCGCAAGCTGCGCCAGGACATCCTGCTCATGAAGCCGTAATCATCACCTGCAGGAGGCCAT
GGAGGCTCGTCTGCTGCTGCAGGACCTCCTGGAGCTGCATGCCGGCCGCTGGGCTGCTCGCTCACCGAG
ATCCACACGCTCTTCGCCAAGCAGCATCAAGCTGGACTGCGAGCGGTGCCAGGCCAAGGGCTTCGTGTGTG
AGCTCTGCAGAGAGGGGACGTGCTGTTCCCGTTCGACAGCCACAGCTGTGTGCGCCGACTGTCCCGC
GGTCTTCCACAGGAGTGTACTACGACAACTCCACCCTGTCCCAAGTGTGCCCGCTCAGCCTGAGG
AAGCAGTCGCTCTTCCAGGAGCCAGGTCCCGATGTGGAGGCC

AGCGGACCGACGCGTACGCGGCCGCTCGAG - GFP Tag - GTTTAA



[View online »](#)

Protein Sequence: >RG234086 representing NM_001242819

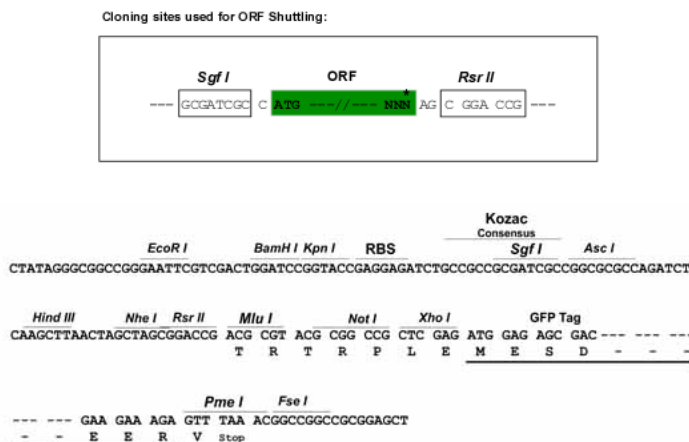
Red=Cloning site Green=Tags(s)

MEYDEKLARFRQAHLNPFNKQSGPRQHEQGPGEVDPVTPEEALPELPPGEPEFRPCPERVMDLGLSEDF
SRPVGLFLASDVQQLRQAIEECKQVILELPEQSEKQKDAVVRLIHLRLKLQELKDPNEPNIIVLLEHR
FYKEKSKSVKQTCDKCNTIIWGLIQTWYCTGYYRCHSKLNLISKPCVSSKVS HQAEYELNICPETGL
DSQDYRCAECRAPISLRGVPSEARQCDYTGQYYCSHCHWDLAVIPARVVHNWDFEPRKVSRCMRYLAL
MYSRPVLRRLREINPLLFYVEELVEIRKLQRDILLMKPYFITCREAMEARLLQLDLDVHAGRLGCSL
IHTLFAKHIKLDLCERCQAKGFVCELCREGDVLPFFDSHTSVCADCSAVFHRDCYDNSTTCPKCARLSL
KQSLFQEPGPDVEA

SGP**T**RRRLE – GFP Tag – V

Restriction Sites: SgfI-RsrII

Cloning Scheme:



ACCN: NM_001242819

ORF Size: 1302 bp

OTI Disclaimer: The molecular sequence of this clone aligns with the gene accession number as a point of reference only. However, individual transcript sequences of the same gene can differ through naturally occurring variations (e.g. polymorphisms), each with its own valid existence. This clone is substantially in agreement with the reference, but a complete review of all prevailing variants is recommended prior to use. [More info](#)

OTI Annotation: This clone was engineered to express the complete ORF with an expression tag. Expression varies depending on the nature of the gene.

Components: The ORF clone is ion-exchange column purified and shipped in a 2D barcoded Matrix tube containing 10ug of transfection-ready, dried plasmid DNA (reconstitute with 100 ul of water).

Reconstitution Method:

1. Centrifuge at 5,000xg for 5min.
2. Carefully open the tube and add 100ul of sterile water to dissolve the DNA.
3. Close the tube and incubate for 10 minutes at room temperature.
4. Briefly vortex the tube and then do a quick spin (less than 5000xg) to concentrate the liquid at the bottom.
5. Store the suspended plasmid at -20°C. The DNA is stable for at least one year from date of shipping when stored at -20°C.

RefSeq: [NM_001242819.1](#), [NP_001229748.1](#)

RefSeq Size: 3524 bp

RefSeq ORF: 1305 bp

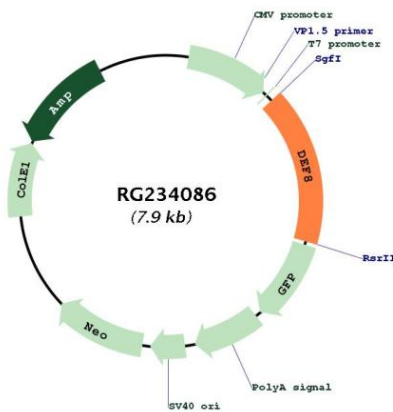
Locus ID: 54849

UniProt ID: [Q6ZN54](#)

Cytogenetics: 16q24.3

Gene Summary: Positively regulates lysosome peripheral distribution and ruffled border formation in osteoclasts. Involved in bone resorption.[UniProtKB/Swiss-Prot Function]

Product images:



Circular map for RG234086