

## Product datasheet for **RG234073**

### RGS6 (NM\_001204422) Human Tagged ORF Clone

#### Product data:

**Product Type:** Expression Plasmids  
**Product Name:** RGS6 (NM\_001204422) Human Tagged ORF Clone  
**Tag:** TurboGFP  
**Symbol:** RGS6  
**Synonyms:** GAP; HA117; S914  
**Mammalian Cell Selection:** Neomycin  
**Vector:** pCMV6-AC-GFP (PS100010)  
**E. coli Selection:** Ampicillin (100 ug/mL)  
**ORF Nucleotide Sequence:** >RG234073 representing NM\_001204422  
 Red=Cloning site Blue=ORF Green=Tags(s)

TTTTGTAATACGACTCACTATAGGGCGGCCGGAATTCGTCGACTGGATCCGGTACCGAGGAGATCTGCC  
 GCC**CGATCGCC**

ATGGCTCAAGGATCCGGGGATCAAAGAGCAGTGGGGTTGCTGACCCAGAGGAGAGTTCTCCAACATGA  
 TCGTTTACTGCAAAATTGAAGACATCATTACAAAGATGCAAGATGACAAGACAGGGGGTGTGCCATCAG  
 AACAGTCAAGAGCTTTCTCCTCAAATCCCCAGTGTGTCACAGGACTGACATTGTGCAGTGGCTTATG  
 AAGAACCTTTCCATTGAGGACCCAGTTGAAGCAATACACTTGGGGAGCCTTATCGCTGCCAGGGCTACA  
 TCTTTCCAATCTCAGACCATGTTCTCACCATGAAGGATGATGGCACCTTTTATCGTTTCCAGGCTCCGTA  
 CTCTGGCCTTGAAGTCTGGGAACCTGAAAACACTGACTATGCCATCTATCTCTGTAAGAGGACAATG  
 CAAAATAAAGCAAGGCTGGAAGTGGCAGATTATGAAGCAGAAAACCTTAGCAAGACTCCAGAGGGCCTTTG  
 CGAGGAAGTGGGAATTCATCTTTATGCAAGCAGAAGCACAAGTAAAGATTGACCGGAAAAAGACAAGAC  
 AGAAAGGAAAAATTTGGATAGTCAAGAACGAGCCTTTTGGGATGTCCACAGGCCTGTGCCAGGCTGTGTG  
 AACACAACAGAAATGGATATCCGAAAATGTCGACGTTTGAAGAATCCACAAAAGTTAAAAAGTCCGTGT  
 ATGGCGTGACTGAAGAGTCCCAGGCACAGAGCCCGGTGCATGTACTCAGCCAACCAATCAGGAAAAACAAC  
 AAAAGAGGACATCCGAAAACAGATAACATTTTTGAACGCACAGATCGACAGACATTGTTTAAAAATGTCC  
 AAAGTGGCTGAAAGCAAAGAGCCACGCAACAGCGAGTAAAAAGATGGGGCTTCTCTTTTCGATGAGATAT  
 TGAAGGACCAGGTGGGGGGGACCAAGTTTCTACGATTCTGAGTCCGAATTCAGTTCAGAAAACCTCAG  
 GTTCTGGCTGGCTGTCCAAGATCTTAAGAAACAACCCCTACAGGATGTGGCCAAGAGGTTAGAAGAAATC  
 TGGCAAGAGTTTCTGGCTCCAGGGGCTCCAAGTCAATCAACCTGGATTCTCACAGCTATGAGATAACCA  
 GTCAAAATGTCAAAGATGGAGGGAGATATACATTTGAAGACGCCAGGAGCACATCTACAAGCTGATGAA  
 GAGTGACAGCTATGCCCGCTTCTCCGGTCAAATGCTTACCAGGATTTGCTGCTGGCCAAGAAGAAGTTG  
 TATCCAACACTCCACTCGCTAAGAGGCC

**ACGCGTACGCGGCCGCTCGAG** - GFP Tag - **GTTTAA**



[View online »](#)

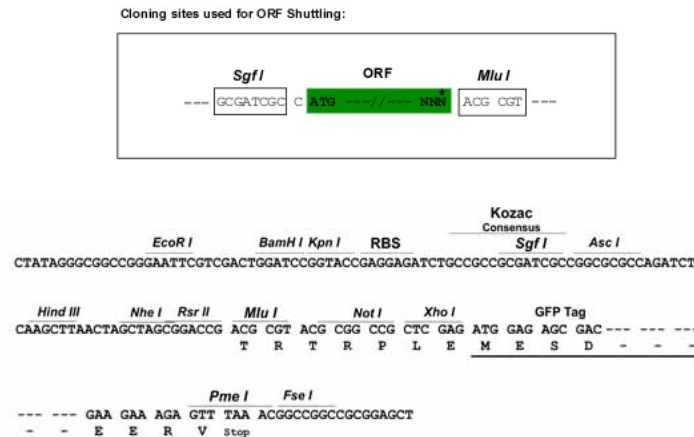
**Protein Sequence:** >RG234073 representing NM\_001204422  
Red=Cloning site Green=Tags(s)

MAQGGSDQRAVGADPEESSPNMIVYCKIEDIITKMQDDKTGGVPVRTVKSFLSKIPSVVTGTDIVQWLM  
 KNLSIEDPVVAIHLGSLIAAQGYIFPISDHVLTMKDDGTFYRFQAPYFWSNCWEPENTDYAIYLCKRTM  
 QNKARLELADYEAENLARLQRAFARKWEFIFMQAEAQVKIDRKKDKTERKILDSQERAFWDVHRPVPGCV  
 NTTEMDIRKCRRLKNPQKVKKSVMYGVTEESQAQSPVHVLSPQIRKTTKEDIRKQITFLNAQIDRHCLKMS  
 KVAESKEPSQQRVVRWGFDFEILKDVGRDQFLRFLESEFSSENLRFWLAQDLKQPLQDVAKRVEEI  
 WQEFLLAPGAPSAINLDSHSYEITSQNVKDGGRYTFEDAQEHYKLMKSDSYARFLRSNAYQDLLLAKKKL  
 YSNTPLAKRP

TRTRPLE – GFP Tag – V

**Restriction Sites:** SgfI-MluI

**Cloning Scheme:**



**ACCN:** NM\_001204422

**ORF Size:** 1290 bp

**OTI Disclaimer:** The molecular sequence of this clone aligns with the gene accession number as a point of reference only. However, individual transcript sequences of the same gene can differ through naturally occurring variations (e.g. polymorphisms), each with its own valid existence. This clone is substantially in agreement with the reference, but a complete review of all prevailing variants is recommended prior to use. [More info](#)

**OTI Annotation:** This clone was engineered to express the complete ORF with an expression tag. Expression varies depending on the nature of the gene.

**Components:** The ORF clone is ion-exchange column purified and shipped in a 2D barcoded Matrix tube containing 10ug of transfection-ready, dried plasmid DNA (reconstitute with 100 ul of water).

**Reconstitution Method:**

1. Centrifuge at 5,000xg for 5min.
2. Carefully open the tube and add 100ul of sterile water to dissolve the DNA.
3. Close the tube and incubate for 10 minutes at room temperature.
4. Briefly vortex the tube and then do a quick spin (less than 5000xg) to concentrate the liquid at the bottom.
5. Store the suspended plasmid at -20°C. The DNA is stable for at least one year from date of shipping when stored at -20°C.

**RefSeq:** [NM\\_001204422.3](#)

**RefSeq Size:** 1551 bp

**RefSeq ORF:** 1293 bp

**Locus ID:** 9628

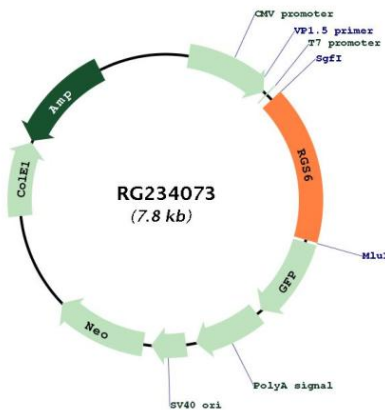
**UniProt ID:** [P49758](#)

**Cytogenetics:** 14q24.2

**Protein Families:** Druggable Genome

**Gene Summary:** This gene encodes a member of the RGS (regulator of G protein signaling) family of proteins, which are defined by the presence of a RGS domain that confers the GTPase-activating activity of these proteins toward certain G alpha subunits. This protein also belongs to a subfamily of RGS proteins characterized by the presence of DEP and GGL domains, the latter a G beta 5-interacting domain. The RGS proteins negatively regulate G protein signaling, and may modulate neuronal, cardiovascular, lymphocytic activities, and cancer risk. Many alternatively spliced transcript variants encoding different isoforms with long or short N-terminal domains, complete or incomplete GGL domains, and distinct C-terminal domains, have been described for this gene, however, the full-length nature of some of these variants is not known.[provided by RefSeq, Mar 2011]

**Product images:**



Circular map for RG234073