

Product datasheet for **RG233960**

DEF8 (NM_001242817) Human Tagged ORF Clone

Product data:

Product Type:	Expression Plasmids
Product Name:	DEF8 (NM_001242817) Human Tagged ORF Clone
Tag:	TurboGFP
Symbol:	DEF8
Mammalian Cell Selection:	Neomycin
Vector:	pCMV6-AC-GFP (PS100010)
E. coli Selection:	Ampicillin (100 ug/mL)
ORF Nucleotide Sequence:	>RG233960 representing NM_001242817 Red=Cloning site Blue=ORF Green=Tags(s)

TTTTGTAATACGACTCACTATAGGGCGGCCGGAATTCGTCGACTGGATCCGGTACCGAGGAGATCTGCCGCC**CGATCGCC**

ATGGATCTCGGCCTGTCTGAGGACCACTTCTCCCGCCCTGTGGGTCTGTTCTGGCCTCTGACGTCCAGCAGCTGCCGAGCGATCGAGGAGTGCAAGCAGGTGATTCTGGAGCTGCCGAGCAGTCGGAGAAGCAGAA
GGATGCCGTGGTGCAGCTCATCCACCTCCGGTGAAGCTCCAGGAGCTGAAGGACCCCAATGAGGATGAG
CCAAACATCCGAGTGCTCCTTGAGCACCGCTTTTACAAGGAGAAGAGCAAGAGCGTCAAGCAGACCTGTG
ACAAGTGTAAACCATCATCTGGGGCTCATTAGACCTGGTACACCTGCACAGGTGTTATTACCGCTG
TCACAGTAAGTGCTTGAACCTCATCTCCAAGCCCTGTGTGAGCTCCAAAGTCAGCCACCAAGCTGAATAC
GAACTGAACATCTGCCCTGAGACAGGGCTGGACAGCCAGGATTACCGCTGTGCCGAGTGCCGGGCGCCCA
TCTCTCTGCGGGGTGTGCCAGTGAGGCCAGGCAGTGCAGCTACACCGCCAGTACTACTGCAGCCACTG
CCACTGGAACGACCTGGCTGTGATCCCTGCACGCGTTGTACACAAGTGGGACTTTGAGCCTCGAAAGGTT
TCTCGTGCAGCATGCGTACCTGGCGCTGATGGTGTCTCGCCCGTACTCAGGCTCCGGGAGATCAACC
CTCTGCTGTTTACGCTACGTGGAGGAGCTGGTGGAGATTCGAAGCTGCGCCAGGACATCCTGCTCATGAA
GCCGTAATTCATACCTGCAGGGAGGCCATGGAGGCTCGTCTGCTGCTGCAGCTCCAGGATCGGCAGCAT
TTTGTGGAGAACGACGAGATGTACTCTGTCCAGGACCTCTGGAGGTGCATGCCGCGCCCTGGGCTGCT
CGCTACCGGAGATCCACACGCTCTTCGCAAGCACATCAAGCTGGACTGCGAGCGGTGCCAGGCCAAGGG
CTTCGTGTGTGAGCTCTGCAGAGAGGGGACGTGCTGTTCCCGTTCGACAGCCACAGTCTGTGTGCGCC
GACTGCTCCGCGGTCTTCCACAGGGACTGCTACTACGACAAGTCCACCACTTGTCCCAAGTGTGCCCGGC
TCAGCCTGAGGAAGCAGTCGCTCTTCCAGGAGCCAGGTCCCGATGTGGAGGCC

AGCGGACCGACGCGTACGCGGCCGCTCGAG - GFP Tag - GTTTAA



[View online »](#)

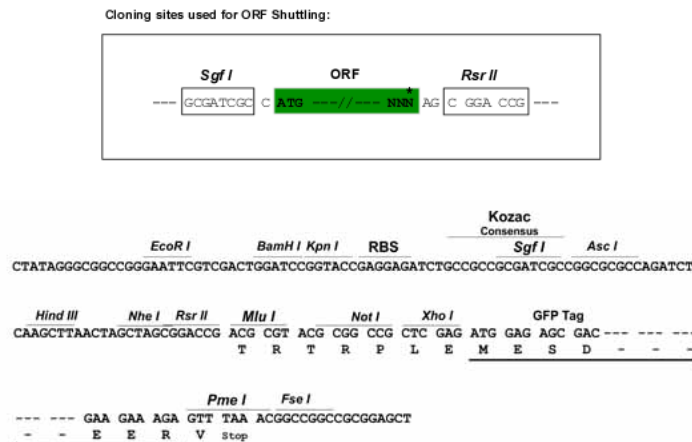
Protein Sequence: >RG233960 representing NM_001242817
 Red=Cloning site Green=Tags(s)

MDLGLSEDHFSRPVGLFLASDVQQLRQAIEECKQVILELPEQSEKQKDAVVRLIHLRLKLQELKDPNEDE
 PNIRVLLLEHRFYKEKSKSVKQTCDKCNTIIWGLIQTWYCTGCYYRCHSKCLNLSKPCVSSKVS HQAEY
 ELNICPETGLDSQDYRCAECRAPISLRGVPSEARQCDYTGQYYCSHCHWN DLAVIPARVVHNWDFEPRKV
 SRCSMRYLALMVS RPVLRRLREINPLLF SYVEELVEIRKLRQDILLMKPYFITCREAMEARLLLQLQDRQH
 FVENDEMYSVQDLLDVHAGRLGCSL TEIHTLFAKH IKLDCERCQAKGFVCEL CREGDVLF PFD SHTSVCA
 DCSAVFHRDCYDNSTTCPKCARLSLRKQSLFQEPGPDVEA

SGPTRRRLE - GFP Tag - V

Restriction Sites: SgfI-RsrII

Cloning Scheme:



ACCN: NM_001242817

ORF Size: 1173 bp

OTI Disclaimer: The molecular sequence of this clone aligns with the gene accession number as a point of reference only. However, individual transcript sequences of the same gene can differ through naturally occurring variations (e.g. polymorphisms), each with its own valid existence. This clone is substantially in agreement with the reference, but a complete review of all prevailing variants is recommended prior to use. [More info](#)

OTI Annotation: This clone was engineered to express the complete ORF with an expression tag. Expression varies depending on the nature of the gene.

Components: The ORF clone is ion-exchange column purified and shipped in a 2D barcoded Matrix tube containing 10ug of transfection-ready, dried plasmid DNA (reconstitute with 100 ul of water).

Reconstitution Method:

1. Centrifuge at 5,000xg for 5min.
2. Carefully open the tube and add 100ul of sterile water to dissolve the DNA.
3. Close the tube and incubate for 10 minutes at room temperature.
4. Briefly vortex the tube and then do a quick spin (less than 5000xg) to concentrate the liquid at the bottom.
5. Store the suspended plasmid at -20°C. The DNA is stable for at least one year from date of shipping when stored at -20°C.

RefSeq: [NM_001242817.2](#)

RefSeq Size: 3528 bp

RefSeq ORF: 1176 bp

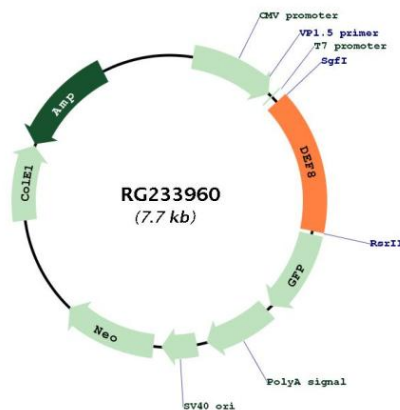
Locus ID: 54849

UniProt ID: [Q6ZN54](#)

Cytogenetics: 16q24.3

Gene Summary: Positively regulates lysosome peripheral distribution and ruffled border formation in osteoclasts. Involved in bone resorption.[UniProtKB/Swiss-Prot Function]

Product images:



Circular map for RG233960