

## Product datasheet for **RG233851**

### OTX1 (NM\_001199770) Human Tagged ORF Clone

#### Product data:

Product Type: Expression Plasmids  
 Product Name: OTX1 (NM\_001199770) Human Tagged ORF Clone  
 Tag: TurboGFP  
 Symbol: OTX1  
 Mammalian Cell Selection: Neomycin  
 Vector: pCMV6-AC-GFP (PS100010)  
 E. coli Selection: Ampicillin (100 ug/mL)  
 ORF Nucleotide Sequence: >RG233851 representing NM\_001199770  
 Red=Cloning site Blue=ORF Green=Tags(s)

TTTTGTAATACGACTCACTATAGGGCGGCCGGGAATTCGTCGACTGGATCCGGTACCGAGGAGATCTGCC  
 GCC**CGATCGCC**

ATGATGTCTTACCTCAAACAACCCCATACGGCATGAACGGGCTGGGCCTGGCCGGGCCCGCCATGGACC  
 TCCTGCACCCATCCGTGGGCTATCCGGCCACTCCGCGGAAGCAGCGGGGAGCGCACCACTTCACGCG  
 TTCACAGCTGGACGTGCTCGAGGCGCTCTCGCCAAGACTCGTACCCTGACATCTTCATGCGGGAGGAG  
 GTGGCGCTCAAGATCAACCTGCCGGAGTCTAGAGTCCAGGTCTGGTTCAAGAACCGCCGCCAAATGCC  
 GCCAGCAGCAGCAGAGCGGGAGCGGAACCAAGAGCCGCCAGCCAAGAAGAAGTCCCTCCAGTGCGGGA  
 GAGCTCGGGCTCCGAAAGCAGTGGCCAATTCACGCCGCCAGCTGTGTCCAGCTCTGCCTCGTCTCTAGC  
 TCGGCGTCCAGCTCTCCGCCAACCCAGCGGCTGCAGCGGCTGCGGGACTAGGTGGGAACCCGGTGGCGG  
 CCGCGTGTGCTGAGTACACCGCTGCCTCATCTATCTGGAGCCCGGCCTCCATCTCGCCAGGCTCAGC  
 GCCCGGTCCGTGTGCGTGCCGGAGCCATTGGCCGCGCCTAGCAACACCTCGTGTATGCAGCGCTCCGTA  
 GCTGCAGGCGCCGCCACCCGAGCAGCCTTTATCCCATGTCTACGGCCAGGGCGGCAGCTACGGCCAAG  
 GCTACCCTACGCCCTCTCTTCTACTTTGGCGGCGTGGACTGCAGCTCATACTAGCGCCCATGCACTC  
 ACATCACCACCCGACCGCTCAGCCCCATGGCACCTCTCCATGGCGGGCCACCATCATCACCACCCA  
 CATGCGCACCCCGTTGAGCCAGTCTCAGGCCACCACCACCACCATCACCACCACCACCAAGGCT  
 ACGGTGGCTCTGGGCTTGCCTTCAACTCTGCCGACTGCTTGGATTACAAGGAGCCTGGCGCGCTGCTGC  
 TTCTCCGCTGGAACTCAACTCAACTCCCCGACTGTCTGGACTATAAGGACCAAGCCTCATGGCGG  
 TTCCAGGTCTTG

AG**CGGACCG**ACGCGTACGCGGCCGCTCGAG - GFP Tag - GTTTAA



[View online »](#)

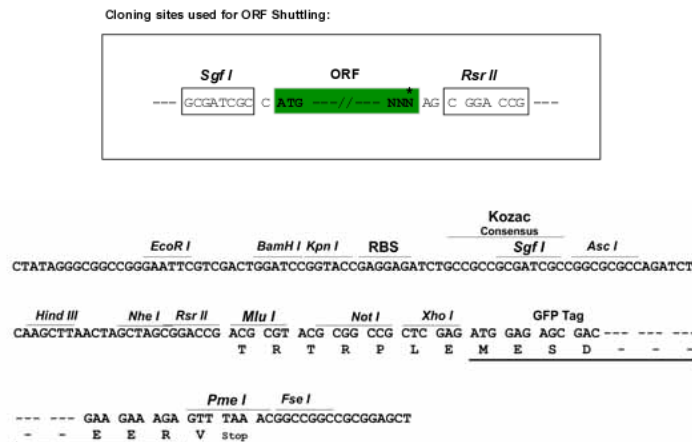
**Protein Sequence:** >RG233851 representing NM\_001199770  
 Red=Cloning site Green=Tags(s)

MMSYLKQPPYGMNGLGLAGPAMDLLHPSVGYPATPRKQRRERTTFTRSQLDVLEALFAKTRYPDIFMREE  
 VALKINLPESRVQVWFKNRRRAKCRQQQSGSGTKSRPAKKKSSPVRESSGSESSGQFTPPAVSSSSASSS  
 SASSSSANPAAAAAGLGNPVAASSLSTPAASSIWSIASISPGSAPASVSVPEPLAAPSNTSCMQRSV  
 AAGAATAAASYPMSYGGQGSYGGYPTPSSSYFGGVDCCSSYLAPMHSHHHPQLSPMAPSSMAGHHHHHP  
 HAHHPLSQSSGHHHHHHHHHQGYGGSLAFNSADCLDYKEPGAAAASSAWKLNFNPSDCLDYKDQASWR  
 FQVL

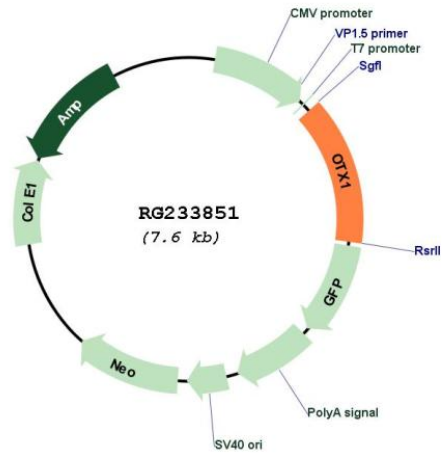
SGPTRRRLE - GFP Tag - V

**Restriction Sites:** SgfI-RsrII

**Cloning Scheme:**



**Plasmid Map:**



**ACCN:** NM\_001199770

<b>ORF Size:</b>	1062 bp
<b>OTI Disclaimer:</b>	The molecular sequence of this clone aligns with the gene accession number as a point of reference only. However, individual transcript sequences of the same gene can differ through naturally occurring variations (e.g. polymorphisms), each with its own valid existence. This clone is substantially in agreement with the reference, but a complete review of all prevailing variants is recommended prior to use. <a href="#">More info</a>
<b>OTI Annotation:</b>	This clone was engineered to express the complete ORF with an expression tag. Expression varies depending on the nature of the gene.
<b>Components:</b>	The ORF clone is ion-exchange column purified and shipped in a 2D barcoded Matrix tube containing 10ug of transfection-ready, dried plasmid DNA (reconstitute with 100 ul of water).
<b>Reconstitution Method:</b>	<ol style="list-style-type: none"><li>1. Centrifuge at 5,000xg for 5min.</li><li>2. Carefully open the tube and add 100ul of sterile water to dissolve the DNA.</li><li>3. Close the tube and incubate for 10 minutes at room temperature.</li><li>4. Briefly vortex the tube and then do a quick spin (less than 5000xg) to concentrate the liquid at the bottom.</li><li>5. Store the suspended plasmid at -20°C. The DNA is stable for at least one year from date of shipping when stored at -20°C.</li></ol>
<b>RefSeq:</b>	<a href="#">NM_001199770.2</a>
<b>RefSeq Size:</b>	2872 bp
<b>RefSeq ORF:</b>	1065 bp
<b>Locus ID:</b>	5013
<b>UniProt ID:</b>	<a href="#">P32242</a>
<b>Cytogenetics:</b>	2p15
<b>Protein Families:</b>	Druggable Genome, Transcription Factors
<b>Gene Summary:</b>	This gene encodes a member of the bicoid sub-family of homeodomain-containing transcription factors. The encoded protein acts as a transcription factor and may play a role in brain and sensory organ development. A similar protein in mouse is required for proper brain and sensory organ development and can cause epilepsy. Alternative splicing results in multiple transcript variants. [provided by RefSeq, Jan 2015]