

Product datasheet for **RG233825**

PDK2 (NM_001199898) Human Tagged ORF Clone

Product data:

Product Type: Expression Plasmids
Product Name: PDK2 (NM_001199898) Human Tagged ORF Clone
Tag: TurboGFP
Symbol: PDK2
Synonyms: PDHK2; PDKII
Mammalian Cell Selection: Neomycin
Vector: pCMV6-AC-GFP (PS100010)
E. coli Selection: Ampicillin (100 ug/mL)
ORF Nucleotide Sequence: >RG233825 representing NM_001199898
 Red=Cloning site Blue=ORF Green=Tags(s)

TTTTGTAATACGACTCACTATAGGGCGCCGGGAATTCGTCGACTGGATCCGGTACCGAGGAGATCTGCC
 GCC**CGATCGCC**

ATGAAAGAGATCAACCTGCTTCCCAGCGAGTGCTGAGCACACCCTCCGTGCAGCTGGTGCAGAGCTGGT
 ATGTCCAGAGCCTCCTGGACATCATGGAGTTCCTGGACAAGGATCCCAGGACCATCGCACCCCTGAGCCA
 GTTCACTGACGCCCTGGTACCATCCGGAACCGGCACAACGACGTGGTCCCACCATGGCACAAGGCGTG
 CTTGAGTACAAGGACACCTACGGCGATGACCCCGTCTCCAACCAGAACATCCAGTACTTCTGGACCGCT
 TCTACCTCAGCCGATCTCCATCCGATGCTCATCAACCAGCACACCCTCATCTTTGATGGCAGCACCAA
 CCCAGCCCATCCAAACACATCGGCAGCATCGACCCCACTGCAACGTCTCTGAGGTGGTCAAAGATGCC
 TACGACATGGCTAAGCTCCTGTGTGACAAGTATTACATGGCCTCACCTGACCTGGAGATCCAGGAGATCA
 ATGCAGCCAACCTCCAAACAGCCGATTACATGGTCTACGTCCCCTCCCACCTCTACCACATGCTCTTTGA
 GCTCTTCAAGAAATGCCATGAGGGCGACTGTGAAAGCCATGAGTCCAGCCTCATTCTCCCACCCATCAAG
 GTCATGGTGGCCTTGGGTGAGGAAGATCTGTCCATCAAGATGAGTGACCGAGGTGGGGTGTTCCTTGA
 GGAAGATTGAGCGACTTTCAGCTACATGTACTCCACAGCACCCACCCCGCCTGGCACCGGGGGAAC
 GCCGCTGGCTGGCTTTGGTTATGGGCTCCCCATTTCCCGCCTCTACGCCAAGTACTTCCAGGGAGACCTG
 CAGCTCTTCTCCATGGAAGGCTTTGGGACCGATGCTGTCACTATCTCAAGGCCCTGTCCACGGACTCGG
 TGGAGCGCTGCCTGTCTACAACAAGTCAAGCCTGGCGCCACTACCAGACCATCCAGGAGCCGGCGACTG
 GTGTGTGCCAGCACGGAGCCCAAGAACACGTCCACGTACCGCGTCAGC

ACGCGTACGCGGCCGCTCGAG - GFP Tag - GTTTAA



[View online »](#)

Protein Sequence: >RG233825 representing NM_001199898
Red=Cloning site Green=Tags(s)

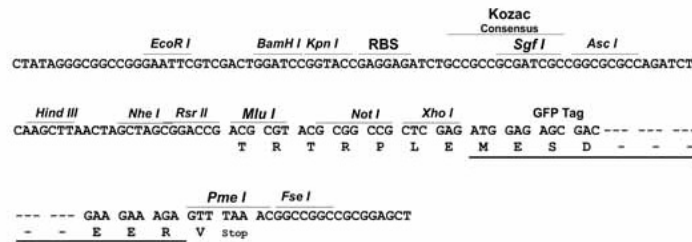
MKEINLLPDRVLSTPSVQLVQSWYVQSLLDIMEFLDKDPEDHRTLSTQFTDALVTIRNRHNDVPTMAQGV
 LEYKDTYGGDPVSNQNIQYFLDRFYLSRISIRMLINQHTLIFDGSTNPAHPKHIGSIDPNCNVSEVVKDA
 YDMAKLLCDKYMASPDLEIQEINAANSKQPIHMVYVPSHLYHMLFELFKNAMRATVESHESSLILPPIK
 VMVALGEEDLSIKMSDRGGVPLRKIERLFSYMYSTAPTPOPGTGGTLAGFGYGLPIISRLYAKYFQGD
 QLFMEGFGTDAVIYLKALSTDSVERLPVYNKSAWRHYQTIQEAGDWCVPSTEPKNTSTYRVS

TRTRPLE - GFP Tag - V

Restriction Sites: SgfI-MluI

Cloning Scheme:

Cloning sites used for ORF Shuttling:



ACCN: NM_001199898

ORF Size: 1029 bp

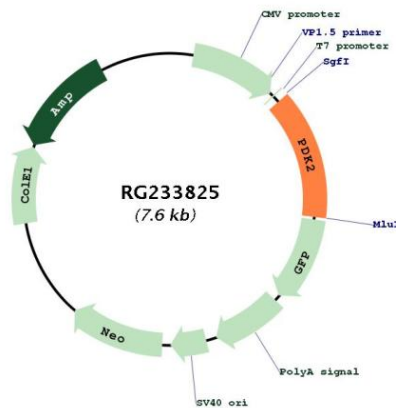
OTI Disclaimer: The molecular sequence of this clone aligns with the gene accession number as a point of reference only. However, individual transcript sequences of the same gene can differ through naturally occurring variations (e.g. polymorphisms), each with its own valid existence. This clone is substantially in agreement with the reference, but a complete review of all prevailing variants is recommended prior to use. [More info](#)

OTI Annotation: This clone was engineered to express the complete ORF with an expression tag. Expression varies depending on the nature of the gene.

Components: The ORF clone is ion-exchange column purified and shipped in a 2D barcoded Matrix tube containing 10ug of transfection-ready, dried plasmid DNA (reconstitute with 100 ul of water).

Reconstitution Method:	<ol style="list-style-type: none">1. Centrifuge at 5,000xg for 5min.2. Carefully open the tube and add 100ul of sterile water to dissolve the DNA.3. Close the tube and incubate for 10 minutes at room temperature.4. Briefly vortex the tube and then do a quick spin (less than 5000xg) to concentrate the liquid at the bottom.5. Store the suspended plasmid at -20°C. The DNA is stable for at least one year from date of shipping when stored at -20°C.
RefSeq:	NM_001199898.1 , NP_001186827.1
RefSeq Size:	2712 bp
RefSeq ORF:	1032 bp
Locus ID:	5164
UniProt ID:	Q15119
Cytogenetics:	17q21.33
Protein Families:	Druggable Genome, Protein Kinase
Gene Summary:	This gene encodes a member of the pyruvate dehydrogenase kinase family. The encoded protein phosphorylates pyruvate dehydrogenase, down-regulating the activity of the mitochondrial pyruvate dehydrogenase complex. Overexpression of this gene may play a role in both cancer and diabetes. Alternatively spliced transcript variants encoding multiple isoforms have been observed for this gene. [provided by RefSeq, Dec 2010]

Product images:



Circular map for RG233825