

Product datasheet for **RG233824**

PAQR6 (NM_001272105) Human Tagged ORF Clone

Product data:

Product Type: Expression Plasmids
Product Name: PAQR6 (NM_001272105) Human Tagged ORF Clone
Tag: TurboGFP
Symbol: PAQR6
Synonyms: PRdelta
Mammalian Cell Selection: Neomycin
Vector: pCMV6-AC-GFP (PS100010)
E. coli Selection: Ampicillin (100 ug/mL)
ORF Nucleotide Sequence: >RG233824 representing NM_001272105
 Red=Cloning site Blue=ORF Green=Tags(s)

TTTTGTAATACGACTCACTATAGGGCGCCGGGAATTCGTCGACTGGATCCGGTACCGAGGAGATCTGCC
 GCC**CGATCGCC**

ATGCTCAGTCTCAAGCTGCCCAACTTCTTCAAGTCCACCAGGTGTTCTGGGAAGATGGCATCATGTCTG
 GCTACCGCCGCCACCAGCTCGGCTTTGGACTGTGTCTCAGCTCCTTCCAGATGACCAACGAGACGGT
 CAACATCTGGACTCACTTCTGCCACCTGGTACTTCTGTGGCGGCTCCTGGCGTGGCGGGCGGCCCC
 GGCTTCCGTGCGGAGCCGTACCACTGGCCGCTGCTGGTCTTCTGCTGCCGCTGCCTTACCCCTTCG
 CGTCGTGTGCGGCACACCTTACGCTCCATGTGCCCCGCATGCGCCACATCTGCTACTTCTCGACTA
 CGGCGCGCTCAGCCTCTACAGTCTGGGCTGCGCCTTCCCCTATGCGCGCTACTCCATGCCGCTCCTGG
 CTGCACGGCCACCTGCACCACTTCTTTGTGCTGCCGCGCACTCAACTCCTTCTGTGCACCGGCTCT
 CCTGCTACTCCCGTTTCTGGAGCTGGAAGCCCTGGGCTCAGTAAGGTCTCCGCACAGGAGCCTTCGC
 CTATCCATTCTGTTTCGACAACCTCCCCTCTTTTATCGGCTCGGGCTGTGCTGGGGCAGGGGCCACGGC
 TGTGGGCAGGAGGCCCTGAGCACCAGCCATGGTACCATCTTCTGCGCGCTGCTCACTGGCTTCTCT
 TCGCCTCCACCTGCCTGAAAGGCTGGCACCAGGACGCTTTGATTACATCGGCCACAGCCACCACTATT
 CCACATCTGTGCAGTGTGGCACCACCTTCCAGCTGGAGGCAGTGTGCTGATATGGGATCACGCAGA
 GCCTGGCTGGCCACACAGAACCTGCCCTGGGCTGGCAGGCACAGTGGCCACACTGGTCTTGGCTGCAG
 CTGGGAACCTACTCATTATTGCTGCTTTCACAGCCACCCTGCTTGGGCCCCCAGTACATGCCCTCTGCT
 GCAGGGTGGCCACTGGAGGGGGTACCAGGCCAAACAACAG

ACGCGTACGCGGCCGCTCGAG - GFP Tag - GTTTAA



[View online »](#)

Protein Sequence: >RG233824 representing NM_001272105
Red=Cloning site Green=Tags(s)

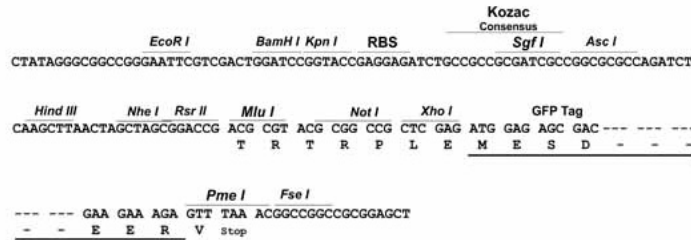
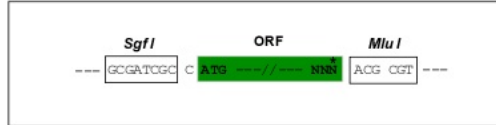
MLSLKLPQLLVHVFQWEDGIMSGYRRPTSSALDCVLSSFQMTNETVNIWTHFLPTWYFLWRLLALAGGP
 GFRAEYPHWPLLVFLLPACLYPFASCCAHTFSSMSPRMRHICYFLDYGALSLSLGCAPFYAAYSMPASW
 LHGHLHQFFVPAALNSFLCTGLSCYSRFLELESPGLSKVLRGTGAFAYPFLFDNLPLFYRLGLCWGRGHG
 CGQEALSTSHGYHLFCALLTGFLFASHLPERLAPGRFDYIGHSHQLFHICAVLGTHTFQLEAVLADMGSRR
 AWLATQEPALGLAGTVATLVLAAAGNLLIIAAFTATLLRAPSTCPLLQGGPLEGGTQAKQQ

TRTRPLE - GFP Tag - V

Restriction Sites: SgfI-MluI

Cloning Scheme:

Cloning sites used for ORF Shuttling:



ACCN: NM_001272105

ORF Size: 1023 bp

OTI Disclaimer: The molecular sequence of this clone aligns with the gene accession number as a point of reference only. However, individual transcript sequences of the same gene can differ through naturally occurring variations (e.g. polymorphisms), each with its own valid existence. This clone is substantially in agreement with the reference, but a complete review of all prevailing variants is recommended prior to use. [More info](#)

OTI Annotation: This clone was engineered to express the complete ORF with an expression tag. Expression varies depending on the nature of the gene.

Components: The ORF clone is ion-exchange column purified and shipped in a 2D barcoded Matrix tube containing 10ug of transfection-ready, dried plasmid DNA (reconstitute with 100 ul of water).

Reconstitution Method:

1. Centrifuge at 5,000xg for 5min.
2. Carefully open the tube and add 100ul of sterile water to dissolve the DNA.
3. Close the tube and incubate for 10 minutes at room temperature.
4. Briefly vortex the tube and then do a quick spin (less than 5000xg) to concentrate the liquid at the bottom.
5. Store the suspended plasmid at -20°C. The DNA is stable for at least one year from date of shipping when stored at -20°C.

RefSeq: [NM_001272105.2](#)

RefSeq Size: 2143 bp

RefSeq ORF: 1026 bp

Locus ID: 79957

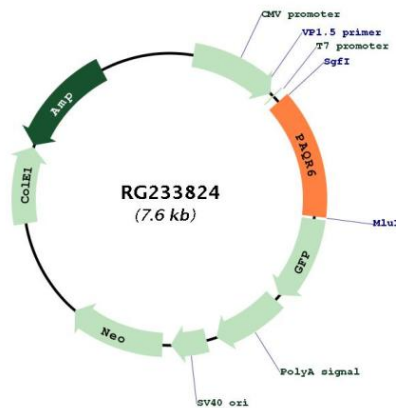
UniProt ID: [Q6TCH4](#)

Cytogenetics: 1q22

Protein Families: Druggable Genome, Transmembrane

Gene Summary: Plasma membrane progesterone (P4) receptor coupled to G proteins (PubMed:23763432, PubMed:23161870). Seems to act through a G(s) mediated pathway (PubMed:23161870). Involved in neurosteroid inhibition of apoptosis (PubMed:23161870). May be involved in regulating rapid P4 signaling in the nervous system (PubMed:23763432). Also binds dehydroepiandrosterone (DHEA), pregnanolone, pregnenolone and allopregnanolone (PubMed:23763432, PubMed:23161870).[UniProtKB/Swiss-Prot Function]

Product images:



Circular map for RG233824