

## Product datasheet for **RG233815**

### CD44 (NM\_001202556) Human Tagged ORF Clone

#### Product data:

Product Type:	Expression Plasmids
Product Name:	CD44 (NM_001202556) Human Tagged ORF Clone
Tag:	TurboGFP
Symbol:	CD44
Synonyms:	CDW44; CSPG8; ECMR-III; HCELL; HUTCH-I; IN; LHR; MC56; MDU2; MDU3; MIC4; Pgp1
Mammalian Cell Selection:	Neomycin
Vector:	pCMV6-AC-GFP (PS100010)
E. coli Selection:	Ampicillin (100 ug/mL)
ORF Nucleotide Sequence:	>RG233815 representing NM_001202556 Red=Cloning site Blue=ORF Green=Tags(s)

TTTTGTAATACGACTCACTATAGGGCGCCGGGAATTCGTCGACTGGATCCGGTACCGAGGAGATCTGCC  
GCC**CGATCGCC**

ATGGACAAGTTTTGGTGGCACGCAGCCTGGGGACTCTGCCTCGTGCCGCTGAGCCTGGCGCAGATCGATT  
TGAATATAACCTGCCGCTTTCAGGTGTATCCACGTGGAGAAAAATGGTCGCTACAGCATCTCTCGGAC  
GGAGGCCGCTGACCTCTGCAAGGCTTTC AATAGCACCTTGCCACAATGGCCAGATGGAGAAAGCTCTG  
AGCATCGGATTTGAGACCTGCAGGTATGGGTTCATAGAAGGGCACGTGGTATTCCCGGATCCACCCCA  
ACTCCATCTGTGCAGAAACAACACAGGGGTGTACATCCTCACATCCAACACCTCCAGTATGACACATA  
TTGCTTCAATGCTTCAGCTCCACCTGAAGAAGATTGTACATCAGTCACAGACCTGCCAATGCCTTTGAT  
GGACCAATTACCAATAACTATTGTTAACCCTGATGGCACCCGCTATGTCCAGAAAGGAGAATACAGAACGA  
ATCCTGAAGACATCTACCCAGCAACCCTACTGATGATGACGTGAGCAGCGGCTCCTCCAGTGAAAGGAG  
CAGCACTTCAGGAGGTTACATCTTTTACACCTTTTCTACTGTACACCCCATCCAGACGAAGACAGTCCC  
TGGATCACCGACAGCACAGACAGAATCCCTGCTACCAGACACTCATGAGGAGTCAAGAAGGTGGAGCAA  
ACACAACCTCTGGTCCTATAAGGACACCCCAAATCCAGAATGGCTGATCATCTTGGCATCCCTCTTGGC  
CTTGGCTTTGATTCTTGCAGTTTGCATTGCAGTCAACAGTCAAGAAGGTGTGGGCAGAAGAAAAAGCTA  
GTGATCAACAGTGGCAATGGAGCTGTGGAGGACAGAAAGCCAAGTGGACTCAACGGAGAGGCCAGCAAGT  
CTCAGGAAATGGTGCATTTGGTGAACAAGGAGTGTGTCAGAAACTCCAGACCAAGTTTATGACAGCTGATGA  
GACAAGGAACCTGCAGAATGTGGACATGAAGATTGGGGTG

**ACGCGT**ACGCGGCCGCTCGAG - GFP Tag - GTTTAA



[View online »](#)

**Protein Sequence:** >RG233815 representing NM\_001202556  
Red=Cloning site Green=Tags(s)

```
MDKFWWHAAGLCLVPLSLAQIDLNITCRFAGVFHVEKNGRYSISRTEAADLCKAFNSTLPTMAQMEKAL
SIGFETCRYGFIIEGHVVIPRIHPNSICAAANTGVYILTSNTSQYDYCFNASAPPEEDCTSVTDLPNAFD
GPITITIVNRDGRYVQKGEYRTNPEDIYPSNPTDDVSSGSSSSRSSTSGGYIFYTFSTVHPIDEDSP
WITDSTRIPATRHSHGSEQEGGANTTSGPIRTPQIPEWLIILASLLALILAVCIAVNSRRRCGQKKKL
VINSNGAVEDRKPSSLNGEASKSQEMVHLVNKESSETPDQFMTADETRNLQNVDKIGV
```

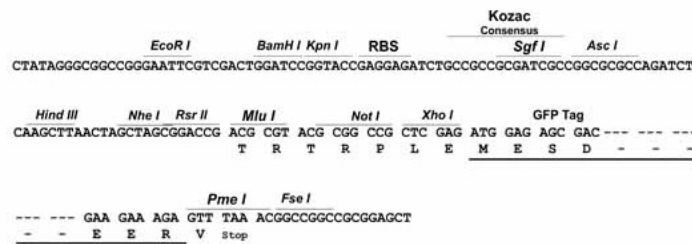
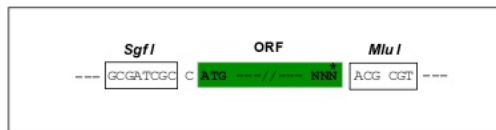
TRTRPLE - GFP Tag - V

**Chromatograms:** [https://cdn.origene.com/chromatograms/ja3086\\_a05.zip](https://cdn.origene.com/chromatograms/ja3086_a05.zip)

**Restriction Sites:** SgfI-MluI

**Cloning Scheme:**

Cloning sites used for ORF Shuttling:



**ACCN:** NM\_001202556

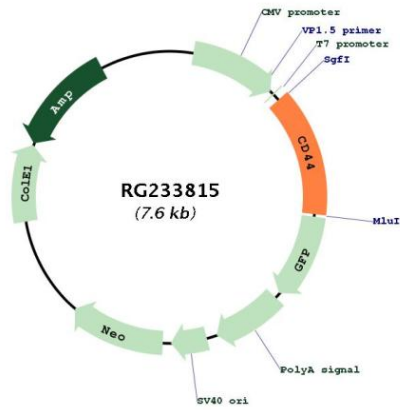
**ORF Size:** 1020 bp

**OTI Disclaimer:** Due to the inherent nature of this plasmid, standard methods to replicate additional amounts of DNA in E. coli are highly likely to result in mutations and/or rearrangements. Therefore, OriGene does not guarantee the capability to replicate this plasmid DNA. Additional amounts of DNA can be purchased from OriGene with batch-specific, full-sequence verification at a reduced cost. Please contact our customer care team at [custsupport@origene.com](mailto:custsupport@origene.com) or by calling 301.340.3188 option 3 for pricing and delivery.

The molecular sequence of this clone aligns with the gene accession number as a point of reference only. However, individual transcript sequences of the same gene can differ through naturally occurring variations (e.g. polymorphisms), each with its own valid existence. This clone is substantially in agreement with the reference, but a complete review of all prevailing variants is recommended prior to use. [More info](#)

<b>OTI Annotation:</b>	This clone was engineered to express the complete ORF with an expression tag. Expression varies depending on the nature of the gene.
<b>Components:</b>	The ORF clone is ion-exchange column purified and shipped in a 2D barcoded Matrix tube containing 10ug of transfection-ready, dried plasmid DNA (reconstitute with 100 ul of water).
<b>Reconstitution Method:</b>	<ol style="list-style-type: none"><li>1. Centrifuge at 5,000xg for 5min.</li><li>2. Carefully open the tube and add 100ul of sterile water to dissolve the DNA.</li><li>3. Close the tube and incubate for 10 minutes at room temperature.</li><li>4. Briefly vortex the tube and then do a quick spin (less than 5000xg) to concentrate the liquid at the bottom.</li><li>5. Store the suspended plasmid at -20°C. The DNA is stable for at least one year from date of shipping when stored at -20°C.</li></ol>
<b>RefSeq:</b>	<a href="#">NM_001202556.2</a>
<b>RefSeq Size:</b>	4542 bp
<b>RefSeq ORF:</b>	1023 bp
<b>Locus ID:</b>	960
<b>UniProt ID:</b>	<a href="#">P16070</a>
<b>Cytogenetics:</b>	11p13
<b>Protein Families:</b>	Adult stem cells, Cancer stem cells, Druggable Genome, Embryonic stem cells, ES Cell Differentiation/IPS, Stem cell relevant signaling - DSL/Notch pathway, Transmembrane
<b>Protein Pathways:</b>	ECM-receptor interaction, Hematopoietic cell lineage
<b>Gene Summary:</b>	The protein encoded by this gene is a cell-surface glycoprotein involved in cell-cell interactions, cell adhesion and migration. It is a receptor for hyaluronic acid (HA) and can also interact with other ligands, such as osteopontin, collagens, and matrix metalloproteinases (MMPs). This protein participates in a wide variety of cellular functions including lymphocyte activation, recirculation and homing, hematopoiesis, and tumor metastasis. Transcripts for this gene undergo complex alternative splicing that results in many functionally distinct isoforms, however, the full length nature of some of these variants has not been determined. Alternative splicing is the basis for the structural and functional diversity of this protein, and may be related to tumor metastasis. [provided by RefSeq, Jul 2008]

Product images:



Circular map for RG233815