

## Product datasheet for **RG233804**

### WWP2 (NM\_001270455) Human Tagged ORF Clone

#### Product data:

**Product Type:** Expression Plasmids  
**Product Name:** WWP2 (NM\_001270455) Human Tagged ORF Clone  
**Tag:** TurboGFP  
**Symbol:** WWP2  
**Synonyms:** AIP2; WWp2-like  
**Mammalian Cell Selection:** Neomycin  
**Vector:** pCMV6-AC-GFP (PS100010)  
**E. coli Selection:** Ampicillin (100 ug/mL)  
**ORF Nucleotide Sequence:** >RG233804 representing NM\_001270455  
**Red=Cloning site Blue=ORF Green=Tags(s)**

TTTTGTAATACGACTCACTATAGGGCGGCCGGAATTCGTCGACTGGATCCGGTACCGAGGAGATCTGCC  
GCC**CGATCGCC**

ATGGCATCTGCCAGCTCTAGCCGGGCAGGAGTGGCCCTGCCTTTTGAGAAGTCTCAGCTCACTTTGAAAG  
TGGTGTCCGAAAGCCCAAGGTGCATAATCGTCAACCTCGAATTAACCTACGTGGAGGTGGCGGTGGA  
TGGACTCCCAGTGAGACCAAGAAGACTGGGAAGCGCATTGGGAGCTCTGAGCTTCTCTGGAATGAGATC  
ATCATTTTGAATGTCACGGCACAGAGTCATTTAGATTTAAAGGTCTGGAGCTGCCATACCTTGAGAAATG  
AACTGCTAGGCACCGCATCTGTCAACCTCTCCAACGTCTTGAAGAACAATGGGGGCAAAATGGAGAACAT  
GCAGCTGACCCTGAACCTGCAGACGGAGAACAAGGCAGCGTTGTCTCAGCGGAGAGCTGACAATTTTC  
CTGGACGGGCCAACTGTTGATCTGGGAAATGTGCCTAATGGCAGTGCCCTGACAGATGGATCACAGCTGC  
CTTCGAGAGACTCCAGTGGAACAGCAGTAGCTCCAGAGAACCAGCCAGCCCCAGCACAAACTGCTT  
TGGTGGAAAGATCCCGGACGCACAGACATTCGGGTGCTTCAGCCAGAACAACCCAGCAACCCGGCGAGCAA  
AGCCCCGGTGCTCGGAGCCGGCACCAGCCCGTCAAGAACTCAGGCCACAGTGGCTTGGCCAATGGCA  
CAGTGAATGATGAACCCACAACAGCCACTGATCCGAAGAACCTCCGTTGTTGGTGTGACGTCCCCACC  
TGCTGCACCCTTGAGTGTGACCCCGAATCCCAACAGACTTCTCTCCCTGCCAGCCACACCCGGCTGAA  
GGAGAGGAACCCAGCACTTCGGGTACACAGCAGCTCCAGCGGCTGCCAGGCCCCGACGCTCTGCCTG  
CTGGATGGGAACAGCGAGAGCTGCCCAACGGACGTGTCTATTATGTTGACCACAATACCAAGACCACCAC  
CTGGGAGCGGCCCTTCTCCAGGG

**ACGCGTACGCGGCCGCTCGAG** - GFP Tag - GTTTAA



[View online »](#)

Protein Sequence: >RG233804 representing NM\_001270455  
 Red=Cloning site Green=Tags(s)

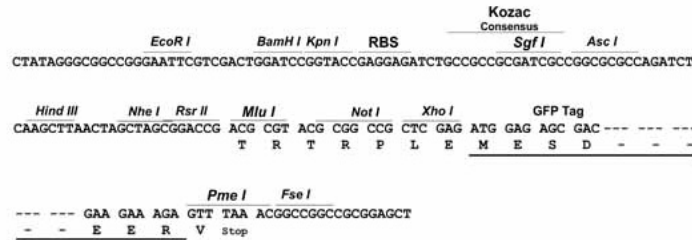
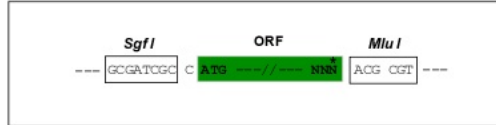
MASASSSRAGVALPFEKSQLTLKVVSAKPKVHNRQPRINSYVEVAVDGLPSETKKTGKRIGSELLWNEI  
 IILNVTAQSHLDLKVWSCHTLRNELLGTASVNL SNVLKNNGGKMEMNQLTLNLQ TENKGSVVSGGELTIF  
 LDGPTVDLGNVPNGSALTDGSQLPSRDSSGTAVAPENRHQPPSTNCFGGRSRTHRHSGASARTTPATGEQ  
 SPGARSRHRQPVKNSGHSGLANGTVNDEPTTATDPEEPSVVGVTSPPAAPLSVTPNPNTTSLPAPATPAE  
 GEEPSTSGTQQLPAAAQAPDALPAGWEQRELPNGRYYYYVDHNTKTTTWERPLPPG

TRTRPLE - GFP Tag - V

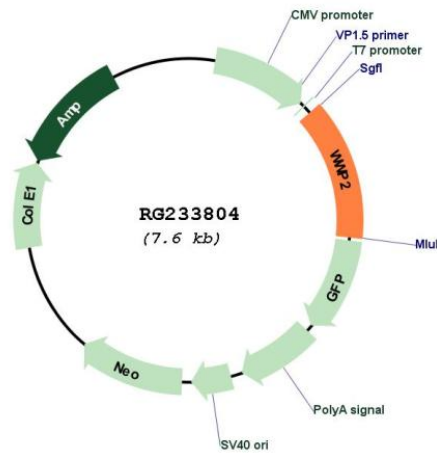
Restriction Sites: SgfI-MluI

Cloning Scheme:

Cloning sites used for ORF Shuttling:



Plasmid Map:



ACCN: NM\_001270455

ORF Size: 1005 bp

|                               |  |
|-------------------------------|--|
| <b>OTI Disclaimer:</b>        | The molecular sequence of this clone aligns with the gene accession number as a point of reference only. However, individual transcript sequences of the same gene can differ through naturally occurring variations (e.g. polymorphisms), each with its own valid existence. This clone is substantially in agreement with the reference, but a complete review of all prevailing variants is recommended prior to use. <a href="#">More info</a>   |
| <b>OTI Annotation:</b>        | This clone was engineered to express the complete ORF with an expression tag. Expression varies depending on the nature of the gene.   |
| <b>Components:</b>            | The ORF clone is ion-exchange column purified and shipped in a 2D barcoded Matrix tube containing 10ug of transfection-ready, dried plasmid DNA (reconstitute with 100 ul of water).   |
| <b>Reconstitution Method:</b> | <ol style="list-style-type: none"><li>1. Centrifuge at 5,000xg for 5min.</li><li>2. Carefully open the tube and add 100ul of sterile water to dissolve the DNA.</li><li>3. Close the tube and incubate for 10 minutes at room temperature.</li><li>4. Briefly vortex the tube and then do a quick spin (less than 5000xg) to concentrate the liquid at the bottom.</li><li>5. Store the suspended plasmid at -20°C. The DNA is stable for at least one year from date of shipping when stored at -20°C.</li></ol>  |
| <b>RefSeq:</b>                | <a href="#">NM_001270455.2</a>   |
| <b>RefSeq Size:</b>           | 2682 bp  |
| <b>RefSeq ORF:</b>            | 1008 bp  |
| <b>Locus ID:</b>              | 11060  |
| <b>UniProt ID:</b>            | <a href="#">O00308</a>   |
| <b>Cytogenetics:</b>          | 16q22.1  |
| <b>Protein Families:</b>      | Druggable Genome   |
| <b>Protein Pathways:</b>      | Ubiquitin mediated proteolysis   |
| <b>Gene Summary:</b>          | This gene encodes a member of the Nedd4 family of E3 ligases, which play an important role in protein ubiquitination. The encoded protein contains four WW domains and may play a role in multiple processes including chondrogenesis and the regulation of oncogenic signaling pathways via interactions with Smad proteins and the tumor suppressor PTEN. Alternatively spliced transcript variants encoding multiple isoforms have been observed for this gene, and a pseudogene of this gene is located on the long arm of chromosome 10. [provided by RefSeq, Jul 2012] |