

## Product datasheet for **RG233759**

### Calumenin (CALU) (NM\_001199672) Human Tagged ORF Clone

#### Product data:

Product Type:	Expression Plasmids
Product Name:	Calumenin (CALU) (NM_001199672) Human Tagged ORF Clone
Tag:	TurboGFP
Symbol:	Calumenin
Mammalian Cell Selection:	Neomycin
Vector:	pCMV6-AC-GFP (PS100010)
E. coli Selection:	Ampicillin (100 ug/mL)
ORF Nucleotide Sequence:	>RG233759 representing NM_001199672 Red=Cloning site Blue=ORF Green=Tags(s)

TTTTGTAATACGACTCACTATAGGGCGGCCGGAATTCGTCGACTGGATCCGGTACCGAGGAGATCTGCC  
GCC**CGATCGCC**

ATGAAGGAACTGATCTAATTATCATGGACCTGCGACAGTTTCTTATGTGCCTGTCCCTGTGCACAGCCT  
TTGCCTTGAGCAAACCCACAGAAAAGAAGGACCGTGTACATCATGAGCCTCAGCTCAGTGACAAGGTTCA  
CAATGATGCTCAGAGTTTGGATTATGACCATGATGCCTTCTTGGGTGCTGAAGAAGCAAAGACCTTTGAT  
CAGCTGACACCAGAAGAGAGCAAGGAAAGGCTTGAATGATTGTAGATAAAATAGACGGGATAAAGATG  
GGTTTGTGACGGAGGGGAGCTGAAATCCTGGATTAAGCACGCCCAGAAGAAATACATATATGACAATGT  
TGAAAACCAATGGCAGGAGTTTGATATGAATCAAGACGGCTTAATCTCCTGGGATGAGTACAGAAACGTG  
ACTTATGGCACTTACCTGGATGATCCAGATCCTGATGATGGATTTAACTATAAACAGATGATGGTTAGAG  
ATGAGCGGAGGTTTAAAATGGCAGACAAGGATGGAGACCTCATTGCCACCAAGGAGGAGTTCACAGCTTT  
CCTGCACCCTGAGGAGTATGACTACATGAAAGATATAGTAGTACAGGAAACAATGGAAGATATAGATAAG  
AATGCTGATGGTTTCATTGATCTAGAAGAGTATATTGGTGACATGTACAGCCATGATGGGAATACTGATG  
AGCCAGAATGGGTAAGACAGAGCGAGAGCAGTTTGTGGATTCGGGATAAGAACCGTGTGGGAAGAT  
GGACAAGGAAGAGACAAAGACTGGATCCTTCCCTCAGACTATGATCATGCAGAGGCAGAAGCCAGGCAC  
CTGGTCTATGAATCAGACCAAACAAGGATGGCAAGCTTACCAAGGAGGAGATCGTTGACAAGTATGACT  
TATTTGTTGGCAGCCAGGCCACAGATTTTGGGGAGGCCTTAGTACGGCATGATGAGTTC

**ACGCGT**ACGCGGCCGCTCGAG - GFP Tag - GTTTAA



[View online »](#)

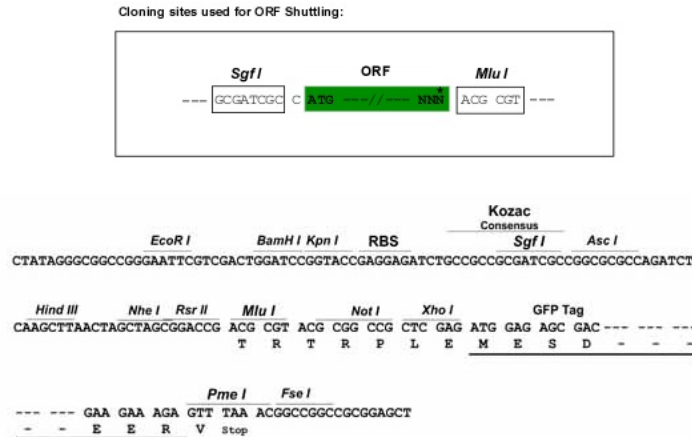
**Protein Sequence:** >RG233759 representing NM\_001199672  
Red=Cloning site Green=Tags(s)

MKETDLIIMDLRQFLMCLSLCTAFALSKPTEKKDRVHHEPQLSDKVHNDASFDYDHD AFLGAEAKTFD  
 QLTPEESKERLGMIVDKIDADKDFVTEGELKSWIKHAQKKYIYDNVENQWQEFDMNQDGLISWDEYRNV  
 TYGTYLDDPDDPDDGFNYKQMMVRDERRFKMADKDGDLIATKEEFTAF LHPPEEYDYMKD I VVQETMEDIDK  
 NADGFIDLEEYIGDMYSHDGN TDEPEWVKTEREQFVEFRDKNRDGKMDKEETKDWILP SDYDHAEAEARH  
 L VYESDQNKDGKLTKEEIVDKYDLFVGSQATDFGEALVRHDEF

TRTRPLE - GFP Tag - V

**Restriction Sites:** SgfI-MluI

**Cloning Scheme:**



**ACCN:** NM\_001199672

**ORF Size:** 969 bp

**OTI Disclaimer:** The molecular sequence of this clone aligns with the gene accession number as a point of reference only. However, individual transcript sequences of the same gene can differ through naturally occurring variations (e.g. polymorphisms), each with its own valid existence. This clone is substantially in agreement with the reference, but a complete review of all prevailing variants is recommended prior to use. [More info](#)

**OTI Annotation:** This clone was engineered to express the complete ORF with an expression tag. Expression varies depending on the nature of the gene.

**Components:** The ORF clone is ion-exchange column purified and shipped in a 2D barcoded Matrix tube containing 10ug of transfection-ready, dried plasmid DNA (reconstitute with 100 ul of water).

**Reconstitution Method:**

1. Centrifuge at 5,000xg for 5min.
2. Carefully open the tube and add 100ul of sterile water to dissolve the DNA.
3. Close the tube and incubate for 10 minutes at room temperature.
4. Briefly vortex the tube and then do a quick spin (less than 5000xg) to concentrate the liquid at the bottom.
5. Store the suspended plasmid at -20°C. The DNA is stable for at least one year from date of shipping when stored at -20°C.

**RefSeq:** [NM\\_001199672.2](#)

**RefSeq Size:** 6181 bp

**RefSeq ORF:** 972 bp

**Locus ID:** 813

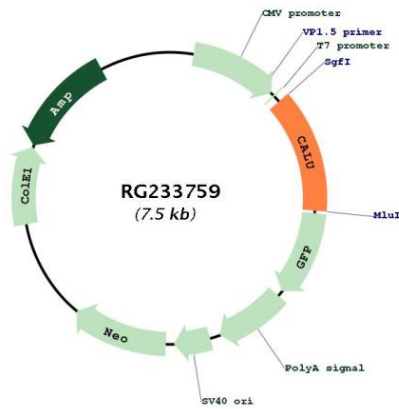
**UniProt ID:** [O43852](#)

**Cytogenetics:** 7q32.1

**Protein Families:** Secreted Protein

**Gene Summary:** The product of this gene is a calcium-binding protein localized in the endoplasmic reticulum (ER) and it is involved in such ER functions as protein folding and sorting. This protein belongs to a family of multiple EF-hand proteins (CERC) that include reticulocalbin, ERC-55, and Cab45 and the product of this gene. Alternatively spliced transcript variants encoding different isoforms have been identified. [provided by RefSeq, Oct 2008]

### Product images:



Circular map for RG233759