

Product datasheet for **RG233757**

SLC25A22 (NM_001191061) Human Tagged ORF Clone

Product data:

Product Type: Expression Plasmids
Product Name: SLC25A22 (NM_001191061) Human Tagged ORF Clone
Tag: TurboGFP
Symbol: SLC25A22
Synonyms: DEE3; EIEE3; GC-1; GC1; NET44
Mammalian Cell Selection: Neomycin
Vector: pCMV6-AC-GFP (PS100010)
E. coli Selection: Ampicillin (100 ug/mL)
ORF Nucleotide Sequence: >RG233757 representing NM_001191061
Red=Cloning site Blue=ORF Green=Tags(s)

TTTTGTAATACGACTCACTATAGGGCGGCCGGAATTCGTCGACTGGATCCGGTACCGAGGAGATCTGCC
GCC**CGATCGCC**

ATGGCTGATAAGCAGATCAGCCTGCCAGCCAAGCTCATCAATGGCGGCATCGCCGGGCTGATCGGTGTCA
CCTGCGTGTTTCCATCGACCTGGCCAAGACCAGGCTGCAGAACCAGCAGAACGGCCAGCGGTGTACAC
GAGCATGCCGACTGCCTCATCAAGACCGTCCGCTCCGAGGGCTACTTCGGCATGTACCGGGGAGCTGCT
GTGAACCTTGACCCTCGTACCCCGAGAAGGCCATCAAGCTGGCAGCCAACGACTTCTCCGACATCAGC
TCTCTAAGGACGGCAGAAGCTGACCCTGCTTAAAGAGATGCTGGCGGGCTGTGGGGCTGGCACCTGCCA
GGTGATCGTGACCACGCCATGGAGATGCTGAAGATCCAGCTGCAGGATGCAGGGCGCATTGCCGCCAG
AGGAAGATCCTGGCTGCCAGGGCCAGCTCTCGGCCAGGGGGTGGCCAGCCCTCAGTGGAGGCTCCAG
CTGCCCTCGGCCACGGCCACCCAGCTGACCCGCGACCTGCTGCGGAGCCGTGGCATTGCCGGTCTCTA
CAAGGGACTCGGGGCCACGCTGCTCAGGGATGTCCCTTCTGTGGTGTACTTCCCGCTCTTGCCAAC
CTGAACCAGCTGGGCCCGCCGCGTCCGAGGAGAAGTGCCTTTCTACGTGCTCTTCCGGCCGGCTGTG
TGGCTGGGAGTGCCCGCGCTGTGGCCGTAACCCCTGTGATGTGGTGAAGACGCGGCTCCAGTCACTTCA
GCGAGGCGTCAACGAGGACACCTACTCTGGGATCCTGGACTGTGCCAGGAAGATCCTGCGGCACGAGGGC
CCCTCGGCCTTCTGAAGGGCGCCTACTGCCGCGCGTGGTATCGCGCCCTTTTCGGCATCGCACAGG
TGGTCTACTTCTGGGCATCGCGGAGTCCCTGCTGGGGCTGCTGCAGGACCCCGAGCC

ACGCGTACGCGGCCGCTCGAG - GFP Tag - GTTTAA



[View online »](#)

Protein Sequence: >RG233757 representing NM_001191061
 Red=Cloning site Green=Tags(s)

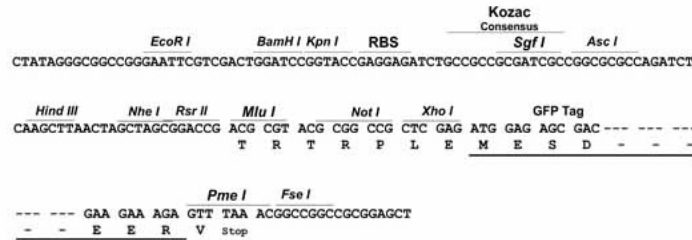
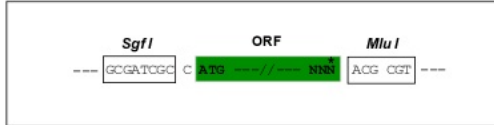
MADKQISLPAKLINGGIAGLIGVTCVFPIDLAKTRLQNQQNGQRVYTSMSDCLIKTVRSEGYFGMYRGAA
 VNLTLVTPKAIKLAANDFFRHQLSKDGQKLTLLKEMLAGCGAGTCQIVITTPMEMLKIQLQDAGRIAAQ
 RKILAAQQLSAQGAQPSVEAPAAPRPTATQLTRDLLRSRGIAGLYKGLGATLLRDVFPFVYVYFPLFAN
 LNQLGRPASEEKSPFYVFLAGCVAGSAAAVAVNPCDVVKTRLQSLQRGVNEDTYSGILDCARKILRHG
 PS AFLK GAYCRALVIAPLFGIAQVYVYFLGIAESLLGLLQDPQA

TRTRPLE - GFP Tag - V

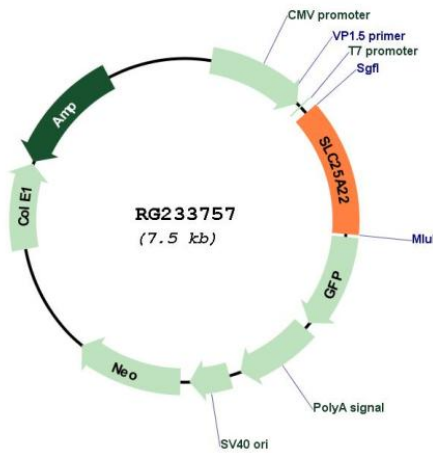
Restriction Sites: SgfI-MluI

Cloning Scheme:

Cloning sites used for ORF Shuttling:



Plasmid Map:



ACCN: NM_001191061

ORF Size: 969 bp

OTI Disclaimer:	The molecular sequence of this clone aligns with the gene accession number as a point of reference only. However, individual transcript sequences of the same gene can differ through naturally occurring variations (e.g. polymorphisms), each with its own valid existence. This clone is substantially in agreement with the reference, but a complete review of all prevailing variants is recommended prior to use. More info
OTI Annotation:	This clone was engineered to express the complete ORF with an expression tag. Expression varies depending on the nature of the gene.
Components:	The ORF clone is ion-exchange column purified and shipped in a 2D barcoded Matrix tube containing 10ug of transfection-ready, dried plasmid DNA (reconstitute with 100 ul of water).
Reconstitution Method:	<ol style="list-style-type: none">1. Centrifuge at 5,000xg for 5min.2. Carefully open the tube and add 100ul of sterile water to dissolve the DNA.3. Close the tube and incubate for 10 minutes at room temperature.4. Briefly vortex the tube and then do a quick spin (less than 5000xg) to concentrate the liquid at the bottom.5. Store the suspended plasmid at -20°C. The DNA is stable for at least one year from date of shipping when stored at -20°C.
RefSeq:	NM_001191061.2
RefSeq Size:	2649 bp
RefSeq ORF:	972 bp
Locus ID:	79751
UniProt ID:	Q9H936
Cytogenetics:	11p15.5
Protein Families:	Transmembrane
Gene Summary:	This gene encodes a mitochondrial glutamate carrier. Mutations in this gene are associated with early infantile epileptic encephalopathy. Multiple alternatively spliced variants, encoding the same protein, have been identified.[provided by RefSeq, Jul 2010]