

Product datasheet for **RG233748**

CD23 (FCER2) (NM_001207019) Human Tagged ORF Clone

Product data:

Product Type:	Expression Plasmids
Product Name:	CD23 (FCER2) (NM_001207019) Human Tagged ORF Clone
Tag:	TurboGFP
Symbol:	CD23
Synonyms:	BLAST-2; CD23; CD23A; CLEC4J; FCE2; IGBF
Mammalian Cell Selection:	Neomycin
Vector:	pCMV6-AC-GFP (PS100010)
E. coli Selection:	Ampicillin (100 ug/mL)
ORF Nucleotide Sequence:	>RG233748 representing NM_001207019 Red=Cloning site Blue=ORF Green=Tags(s)

TTTTGTAATACGACTCACTATAGGGCGGCCGGAATTCGTCGACTGGATCCGGTACCGAGGAGATCTGCC
GCC**CGATCGCC**

ATGAATCCTCCAAGCCAGGAGATCGAGGAGCTTCCAGGAGGCGGTGTTGCAGGCGTGGGACTCAGATCG
TGCTGCTGGGGCTGGTGACCGCCGCTCTGTGGGCTGGGCTGTGACTCTGCTTCTCCTGTGGCACTGGGA
CACCACACAGAGTCTAAACAGCTGGAAGAGAGGGCTGCCGGAACGCTCTCAAGTTTCCAAGAAGCTTG
GAAAGCCACCACGGTACCAGATGGCGCAGAAATCCCAGTCCACGCAGATTTACAGGAAGTGGAGAAC
TTCGAGCTGAACAGCAGAGATTGAAATCTCAGGACTTGGAGCTGTCTGGAACCTGAACGGGCTTCAAGC
AGATCTGAGCAGCTTCAAGTCCCAGGAATTGAACGAGAGGAACGAAGCTTCAAGTTTGTGGAAAGACTC
CGGGAGGAGGTGACAAAGCTAAGGATGGAGTTGCAGGTGTCCAGCGGCTTGTGTGCAACACGTGCCCTG
AAAAGTGGATCAATTTCCAACGGAAGTGCTACTACTTCGGAAGGGCACCAAGCAGTGGGTCCACGCCCCG
GTATGCCTGTGACGACATGGAAGGGCAGCTGGTCAGCATCCACAGCCCGGAGGAGCAGGACTTCTGACC
AAGCATGCCAGCCACCCGGCTCCTGGATTGGCCTTCGGAACCTGGACCTGAAGGGGGAGTTTATCTGGG
TGGATGGGAGCCACGTGGACTACAGCAACTGGGCTCCAGGGGAGCCACCAGCCGGAGCCAGGGCGAGGA
CTGCGTGATGATCGGGGCTCCGGTCGCTGGAACGACGCCTTCTGCGACCGTAAGCTGGGCGCCTGGGTG
TGCGACCGGCTGGCCACATGCACGCCCCAGCCAGCGAAGGTTCCGCGGAGTCCATGGGACCTGATTCAA
GACCAGACCCTGACGGCCGCTGCCACCCCTCTGCCCTCTCCACTCT

ACGCGTACGCGGCCGCTCGAG - GFP Tag - GTTTAA



[View online »](#)

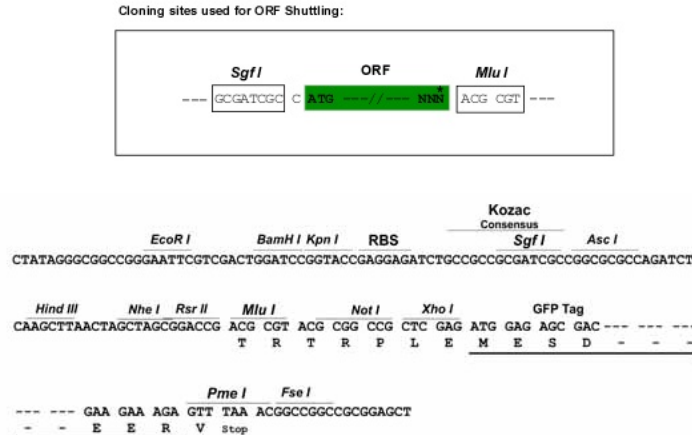
Protein Sequence: >RG233748 representing NM_001207019
Red=Cloning site Green=Tags(s)

MNPPSQEIEELPRRRCCRRGTQIVLLGLVTAALWAGLLTLLLLWHWDTTQSLKQLEERAARNVSQVSKNL
 ESHHGDMQAQKSQSTQISQLEELRAEQRLKSQDLELSWNLNGLQADLSSFKSQELNERNEASDLLERL
 REEVTKLRMELQVSSGFVNCNTCPEKWINFQRKCYFYGKGTQVWHARYACDDMEGQLVSIHSPPEQDFLT
 KHASHTGSWIGLRNLDLKGFEIWDGSHVDYSNWAPGEPTSRSQGEDCVMMRGSGRWDAFCDRKLGAWW
 CDRLATCTPPASEGSAESMGPDSRPDPDGRLLTPPSAPLHS

TRTRPLE - GFP Tag - V

Restriction Sites: SgfI-MluI

Cloning Scheme:



ACCN: NM_001207019

ORF Size: 960 bp

OTI Disclaimer: The molecular sequence of this clone aligns with the gene accession number as a point of reference only. However, individual transcript sequences of the same gene can differ through naturally occurring variations (e.g. polymorphisms), each with its own valid existence. This clone is substantially in agreement with the reference, but a complete review of all prevailing variants is recommended prior to use. [More info](#)

OTI Annotation: This clone was engineered to express the complete ORF with an expression tag. Expression varies depending on the nature of the gene.

Components: The ORF clone is ion-exchange column purified and shipped in a 2D barcoded Matrix tube containing 10ug of transfection-ready, dried plasmid DNA (reconstitute with 100 ul of water).

Reconstitution Method:

1. Centrifuge at 5,000xg for 5min.
2. Carefully open the tube and add 100ul of sterile water to dissolve the DNA.
3. Close the tube and incubate for 10 minutes at room temperature.
4. Briefly vortex the tube and then do a quick spin (less than 5000xg) to concentrate the liquid at the bottom.
5. Store the suspended plasmid at -20°C. The DNA is stable for at least one year from date of shipping when stored at -20°C.

RefSeq: [NM_001207019.2](#), [NP_001193948.2](#)

RefSeq Size: 1488 bp

RefSeq ORF: 963 bp

Locus ID: 2208

UniProt ID: [P06734](#)

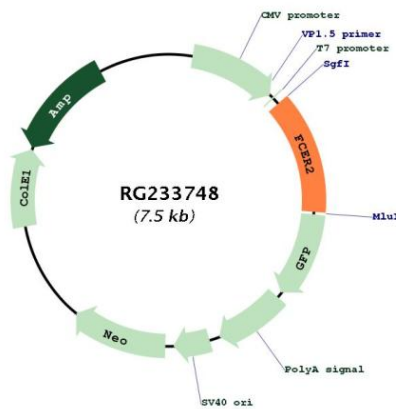
Cytogenetics: 19p13.2

Protein Families: Secreted Protein, Transmembrane

Protein Pathways: Hematopoietic cell lineage

Gene Summary: The protein encoded by this gene is a B-cell specific antigen, and a low-affinity receptor for IgE. It has essential roles in B cell growth and differentiation, and the regulation of IgE production. This protein also exists as a soluble secreted form, then functioning as a potent mitogenic growth factor. Alternatively spliced transcript variants encoding different isoforms have been described for this gene.[provided by RefSeq, Jul 2011]

Product images:



Circular map for RG233748