

## Product datasheet for **RG233732**

### GLUT8 (SLC2A8) (NM\_001271712) Human Tagged ORF Clone

#### Product data:

Product Type:	Expression Plasmids
Product Name:	GLUT8 (SLC2A8) (NM_001271712) Human Tagged ORF Clone
Tag:	TurboGFP
Symbol:	GLUT8
Synonyms:	GLUT8; GLUTX1
Mammalian Cell Selection:	Neomycin
Vector:	pCMV6-AC-GFP (PS100010)
E. coli Selection:	Ampicillin (100 ug/mL)
ORF Nucleotide Sequence:	>RG233732 representing NM_001271712 Red=Cloning site Blue=ORF Green=Tags(s)

TTTTGTAATACGACTCACTATAGGGCGGCCGGAATTCGTCGACTGGATCCGGTACCGAGGAGATCTGCC  
GCC**CGATCGCC**

ATGGTCGTCGTCGGCATCCTCCTGGCCTACCTGGCAGGCTGGGTGCTGGAGTGGCGCTGGCTGGCTGTGC  
TGGGCTGCGTGCCCCCTCCCTCATGCTGCTTCTCATGTGCTTCATGCCGAGACCCCGCCTTCTGCT  
GACTCAGCACAGGCGCCAGGAGGCCATGGCCGCCCTGCGGTTCTGTGGGGCTCCGAGCAGGGCTGGGAA  
GACCCCCCATCGGGGCTGAGCAGAGCTTTCACCTGGCCCTGCTCGGCAGCCCGGCATCTACAAGCCCT  
TCATCATCGGCGTCTCCCTGATGGCCTTCCAGCAGCTGTGGGGGTCAACGCCGTCATGTTCTATGCAGA  
GACCATCTTTGAAGAGGCCAAGTTCAAGGACAGCAGCCTGGCCTCGGTCGTCGTGGGTGTCATCCAGGTG  
CTGTTACAGCTGTGGCGCTCTCATCATGGACAGAGCAGGGCGGAGGCTGCTCCTGGTCTTGTCCAGGTG  
TGGTCATGGTGTTCAGCACGAGTGCCTTCGGCGCTACTTCAAGCTGACCCAGGGTGGCCCTGGCAACTC  
CTCGCACGTGGCCATCTCGGCGCCTGTCTCTGCACAGCCTGTTGATGCCAGCGTGGGGCTGGCCTGGCTG  
GCCGTGGGCAGCATGTGCTCTTCATCGCCGGCTTTCGGTGGGCTGGGGGCCATCCCCCTGGCTCCTCA  
TGTCAGAGATCTCCCTCTGCATGTCAAGGGCGTGGCGACAGGCATCTGCGTCCCTACCAACTGGCTCAT  
GGCCTTTCTCGTAGCAAGGAGTTCAGCAGCCTCATGGAGTCTCAGGCCATATGGAGCCTTCTGGCTT  
GCCTCCGCTTTCTGCATCTTCAGTGTCTTTTCACTTTTGTCTGTGTCCCTGAAACTAAAGGAAAGACTC  
TGAACAAATCACAGCCCATTTTGAGGGGCGA

**ACGCGT**ACGCGGCCGCTCGAG - GFP Tag - GTTTAA



[View online »](#)

**Protein Sequence:** >RG233732 representing NM\_001271712  
 Red=Cloning site Green=Tags(s)

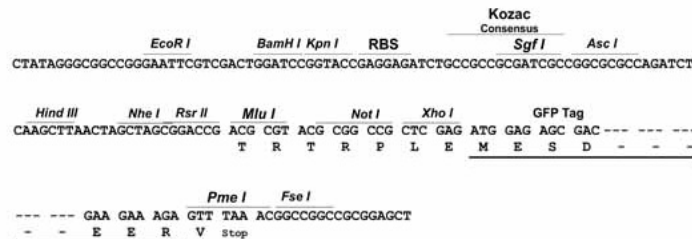
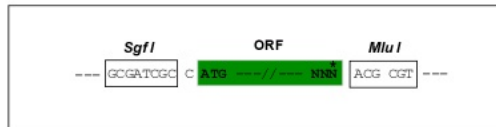
MVVVIGILLAYLAGWVLEWRWLAVLGCVPPSLMLLLMCFMPETPRFLLTQHRRQEAMAALRFLWGSEQGWE  
 DPPIGAEQSFHLALLRQPGIYKPFIIIGVSLMAFQQLSGVNAVMFYAETIFEEAKFKDSSLASVVVGVIVQ  
 LFTAVAALIMDRAGRRLLLVLSGVVMVFSTSAFGAYFKLTQGGPGNSSHVAISAPVSAQPVDASVGLAWL  
 AVGSMCLFIAGFAVWGWPWPWLLMSEIFPLHVKGVATGICVLTNWLMAFLVTKEFSSLMEVLRPYGAFWL  
 ASAFCIFSVLFTLFCVPETKGTLEQITAHFEGR

TRTRPLE - GFP Tag - V

**Restriction Sites:** SgfI-MluI

**Cloning Scheme:**

Cloning sites used for ORF Shuttling:



**ACCN:** NM\_001271712

**ORF Size:** 942 bp

**OTI Disclaimer:** The molecular sequence of this clone aligns with the gene accession number as a point of reference only. However, individual transcript sequences of the same gene can differ through naturally occurring variations (e.g. polymorphisms), each with its own valid existence. This clone is substantially in agreement with the reference, but a complete review of all prevailing variants is recommended prior to use. [More info](#)

**OTI Annotation:** This clone was engineered to express the complete ORF with an expression tag. Expression varies depending on the nature of the gene.

**Components:** The ORF clone is ion-exchange column purified and shipped in a 2D barcoded Matrix tube containing 10ug of transfection-ready, dried plasmid DNA (reconstitute with 100 ul of water).

**Reconstitution Method:**

1. Centrifuge at 5,000xg for 5min.
2. Carefully open the tube and add 100ul of sterile water to dissolve the DNA.
3. Close the tube and incubate for 10 minutes at room temperature.
4. Briefly vortex the tube and then do a quick spin (less than 5000xg) to concentrate the liquid at the bottom.
5. Store the suspended plasmid at -20°C. The DNA is stable for at least one year from date of shipping when stored at -20°C.

**RefSeq:** [NM\\_001271712.1](#), [NP\\_001258641.1](#)

**RefSeq Size:** 1806 bp

**RefSeq ORF:** 945 bp

**Locus ID:** 29988

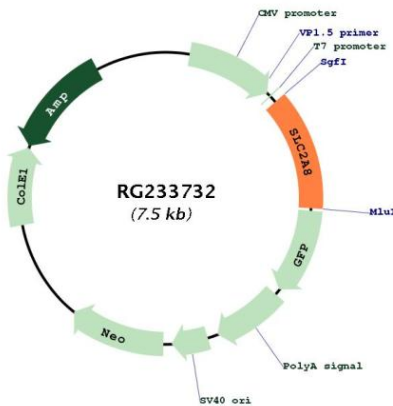
**UniProt ID:** [Q9NY64](#)

**Cytogenetics:** 9q33.3

**Protein Families:** Transmembrane

**Gene Summary:** This gene belongs to the solute carrier 2A family, which includes intracellular glucose transporters. Based on sequence comparison, the glucose transporters are grouped into three classes and this gene is a member of class II. The encoded protein, like other members of the family, contains several conserved residues and motifs and 12 transmembrane domains with both amino and carboxyl ends being on the cytosolic side of the membrane. Alternatively spliced transcript variants have been described for this gene. [provided by RefSeq, Nov 2012]

**Product images:**



Circular map for RG233732