

## Product datasheet for **RG233689**

### SSBP2 (NM\_001256736) Human Tagged ORF Clone

#### Product data:

**Product Type:** Expression Plasmids  
**Product Name:** SSBP2 (NM\_001256736) Human Tagged ORF Clone  
**Tag:** TurboGFP  
**Symbol:** SSBP2  
**Synonyms:** HSPC116; SOSS-B2  
**Mammalian Cell Selection:** Neomycin  
**Vector:** pCMV6-AC-GFP (PS100010)  
**E. coli Selection:** Ampicillin (100 ug/mL)  
**ORF Nucleotide Sequence:** >RG233689 representing NM\_001256736  
**Red=Cloning site Blue=ORF Green=Tags(s)**

TTTTGTAATACGACTCACTATAGGGCGGCCGGAATTCGTCGACTGGATCCGGTACCGAGGAGATCTGCC  
GCC**CGATCGCC**

ATGTACGGCAAAGGCAAGAGTAACAGCAGCGCCGTCCCGTCCGACAGCCAGGCCCGGAGAAGTTAGCAC  
TCTACGTATATGAATATCTGCTCCATGTAGGAGCTCAGAAATCAGCTCAAACATTTTTATCAGAGATAAG  
ATGGGAAAAAACATCACATTGGGGGAACCACCAGGATTCTTACATTCTGGTGGTGTGATTTTGGGAT  
CTCTACTGTGCAGCTCCAGAGAGACGTGAAACATGTGAACACTCAAGTGAAGCAAAGCCTTCCATGATT  
ACCCTTTTATGTCACCTCGGTACCCTGGAGGTCCAAGGCCCCATTGAGGATACCTAATCAGGCCTTGG  
AGGTGTCCAGGAAGTCAGCCATTACTCCCCAGTGAATGGATCCAACCTCGACAACAAGGACATCCAAAT  
ATGGGTGGGCAATGCAGAGAATGACTCCTCCAAGAGGAATGGTGCCTTAGGACCACAGAACTATGGAG  
GTGCAATGAGACCCCACTGAATGCTTTAGGTGGCCCTGGAATGCCTGGAATGAACATGGGTCCAGGTGG  
TGGTAGACCTTGGCCAAACCAACAAATGCCAATTCATACCACTCCTCAGCATCTCCTGGGAATTAT  
GTAGGTCTCCAGGAGGTGGAGGGCCACCAGGAACACCCATCATGCCTAGTCCAGCAGATTCAACCAACT  
CTGGTGATAACATGTATACTTTAATGAATGCAGTACCTCCTGGACCTAACAGACCTAATTTTCCAATGGG  
TCCTGGGTCAGATGGTCCCATGGGTGGATTAGGAGGAATGGAGTCACATCACATGAATGGCTCTTTAGGC  
TCAGGAGATATGGACAGTATTTCCAAGTACTCCCTAGCATGACAATGAGCGTG

**ACGCGTACGCGGCCGCTCGAG** - GFP Tag - GTTTAA



[View online »](#)

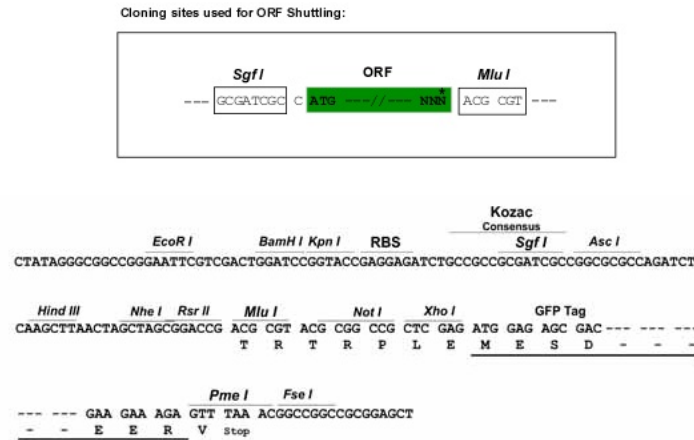
**Protein Sequence:** >RG233689 representing NM\_001256736  
Red=Cloning site Green=Tags(s)

MYGKGKSNSSAVPSDSQAREKLALYVVEYLLHVGAQKSAQTFLSEIRWEKNITLGEPPGFLHSWVCVFD  
 LYCAAPERRETCEHSSEAKAFHDYPFMSPRYPGGPRPPLRIPNQALGGVPGSQPLLPSGMDPTRQQGHPN  
 MGGPMQRMTPPRGMVPLGPQNYGGAMRPPLNALGGPGMGMNMGPGGGRPWPNPTNANSIPYSSASPGNY  
 VGPPGGGGPPGTPIMPSPADSTNSGDNMYTLMNAVPPGNRPNFPMGPGSDGPMGGLGGMESHMNGSLG  
 SGDMDSISKYSPSMTMSV

TRTRPLE - GFP Tag - V

**Restriction Sites:** SgfI-MluI

**Cloning Scheme:**



**ACCN:** NM\_001256736

**ORF Size:** 894 bp

**OTI Disclaimer:** The molecular sequence of this clone aligns with the gene accession number as a point of reference only. However, individual transcript sequences of the same gene can differ through naturally occurring variations (e.g. polymorphisms), each with its own valid existence. This clone is substantially in agreement with the reference, but a complete review of all prevailing variants is recommended prior to use. [More info](#)

**OTI Annotation:** This clone was engineered to express the complete ORF with an expression tag. Expression varies depending on the nature of the gene.

**Components:** The ORF clone is ion-exchange column purified and shipped in a 2D barcoded Matrix tube containing 10ug of transfection-ready, dried plasmid DNA (reconstitute with 100 ul of water).

**Reconstitution Method:**

1. Centrifuge at 5,000xg for 5min.
2. Carefully open the tube and add 100ul of sterile water to dissolve the DNA.
3. Close the tube and incubate for 10 minutes at room temperature.
4. Briefly vortex the tube and then do a quick spin (less than 5000xg) to concentrate the liquid at the bottom.
5. Store the suspended plasmid at -20°C. The DNA is stable for at least one year from date of shipping when stored at -20°C.

**RefSeq:** [NM\\_001256736.2](#)

**RefSeq Size:** 4252 bp

**RefSeq ORF:** 897 bp

**Locus ID:** 23635

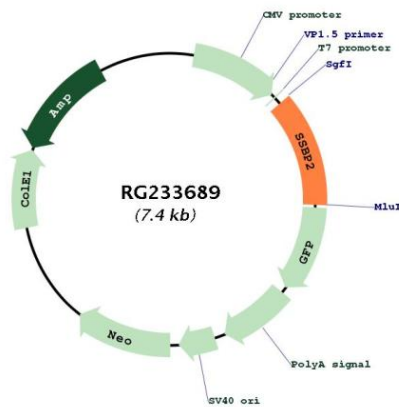
**UniProt ID:** [P81877](#)

**Cytogenetics:** 5q14.1

**Protein Families:** Transcription Factors

**Gene Summary:** This gene encodes a subunit of a protein complex that interacts with single-stranded DNA and is involved in the DNA damage response and maintenance of genome stability. The encoded protein may also play a role in telomere repair. A variant of this gene may be associated with survival in human glioblastoma patients. [provided by RefSeq, Sep 2016]

**Product images:**



Circular map for RG233689