

## Product datasheet for **RG233681**

### PLSCR3 (NM\_001201576) Human Tagged ORF Clone

#### Product data:

Product Type:	Expression Plasmids
Product Name:	PLSCR3 (NM_001201576) Human Tagged ORF Clone
Tag:	TurboGFP
Symbol:	PLSCR3
Mammalian Cell Selection:	Neomycin
Vector:	pCMV6-AC-GFP (PS100010)
E. coli Selection:	Ampicillin (100 ug/mL)
ORF Nucleotide Sequence:	>RG233681 representing NM_001201576 Red=Cloning site Blue=ORF Green=Tags(s)

TTTTGTAATACGACTCACTATAGGGCGGCCGGAATTCGTCGACTGGATCCGGTACCGAGGAGATCTGCC  
GCC**CGATCGCC**

ATGGCAGGCTACTTGCCCCCAAAGGCTACGCCCTTCGCCCCACCTCCCTACCCTGTCACCCCTGGGT  
ACCCGGAGCCGGCGCTACATCCTGGGCCCGGCAGGCCAGTGGCCGCCAGGTACCTGCCCCAGCTCC  
CGGCTTCGCCCTTCCCTCGCTGGCCCGTGGCCTGGGGTCTGCTGCCCTTCTTGCCACTGCCA  
GGGTGCCTTCTGGCCTCGAATTCCTGGTCAGATTGATCAGATTTTGATTACCAGAAGGCTGAGCGG  
TGAAACGTTCTAGGCTGGGAGACCTGTAATCGGTATGAACTGCGCTCTGGGGCCGGCAGCCCTGGG  
TCAGGCGCCGAGGAGAGCAACTGCTGCGCCGCTGTGCTGTGGCGCCCGCCGCGCTGCGTGTCCGC  
CTGGCCGACCCCGGGACCGTGAGGTGCTGCGTTTGTCCGCCCGCTGCACTGTGGCTGCAGCTGTGCC  
CCTGTGGCTCCAGGAGATGGAAGTACAGGCTCCACCAGGCACCACCTTGCCACGTGCTACAGACCTG  
GCATCCCTTCTCCCAAGTTCTCCATCCAGGATGCCGATCGCCAGACAGTCTTGCGAGTGGTGGGGCC  
TGCTGGACCTGTGGCTGTGGCACAGACACCAACTTTGAGGTGAAGACTCGGGATGAATCCCGCAGTGTGG  
GCCGCATCAGCAAGCAGTGGGGGGCTGGTCCGAGAAGCCCTCACAGATGCAGATGACTTTGCCCTACA  
GTTCCCGCTGGACTGGATGTGAGGGTGAAGGCTGTGCTGCTGGGAGCCACATTCCTCATTGACTACATG  
TTCTTTGAGAAGCGAGGAGGCGCTGGGCCCTCTGCCGTACCAGT

ACGCGTACGCGGCCGCTCGAG - GFP Tag - GTTTAA



[View online »](#)

**Protein Sequence:** >RG233681 representing NM\_001201576  
Red=Cloning site Green=Tags(s)

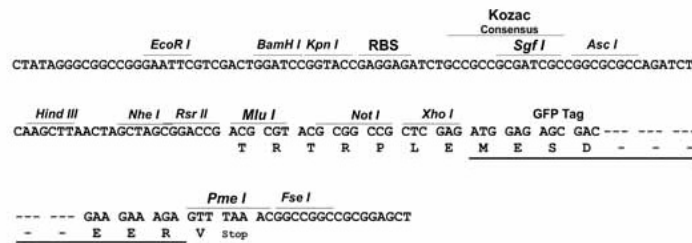
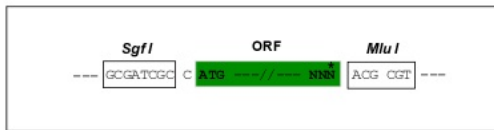
MAGYLPPKGYAPSPPPYPVTPGYPEPALHPGPGQAPVPAQVPAPAPGFALFPSPGPVALGSAAPFLPLP  
 GVPSGLEFLVQIDQILIHQKAERVETFLGWETCNRYELRSGAGQLGQAAEESNCCARLCCGARRPLRVR  
 LADPGDREVLRLRLPHCGSCCCPCGLQEMEVQAPPGTIGHVLQTWHPFLPKFSIQDADRQTVLRVVGP  
 CWTCCGCTDTNFEVKTRDESRSVGRISKQWGLVREALTDADDFGLQFPLDLDRVVKAVLLGATFLIDYM  
 FFEKRGGAGPSAVTS

TRTRPLE - GFP Tag - V

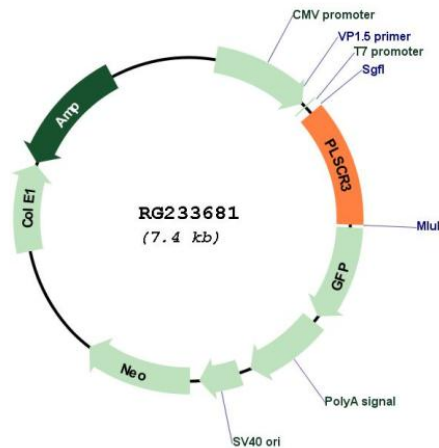
**Restriction Sites:** SgfI-MluI

**Cloning Scheme:**

Cloning sites used for ORF Shutting:



**Plasmid Map:**



**ACCN:** NM\_001201576

**ORF Size:** 885 bp

<b>OTI Disclaimer:</b>	The molecular sequence of this clone aligns with the gene accession number as a point of reference only. However, individual transcript sequences of the same gene can differ through naturally occurring variations (e.g. polymorphisms), each with its own valid existence. This clone is substantially in agreement with the reference, but a complete review of all prevailing variants is recommended prior to use. <a href="#">More info</a>
<b>OTI Annotation:</b>	This clone was engineered to express the complete ORF with an expression tag. Expression varies depending on the nature of the gene.
<b>Components:</b>	The ORF clone is ion-exchange column purified and shipped in a 2D barcoded Matrix tube containing 10ug of transfection-ready, dried plasmid DNA (reconstitute with 100 ul of water).
<b>Reconstitution Method:</b>	<ol style="list-style-type: none"><li>1. Centrifuge at 5,000xg for 5min.</li><li>2. Carefully open the tube and add 100ul of sterile water to dissolve the DNA.</li><li>3. Close the tube and incubate for 10 minutes at room temperature.</li><li>4. Briefly vortex the tube and then do a quick spin (less than 5000xg) to concentrate the liquid at the bottom.</li><li>5. Store the suspended plasmid at -20°C. The DNA is stable for at least one year from date of shipping when stored at -20°C.</li></ol>
<b>RefSeq:</b>	<a href="#">NM_001201576.2</a>
<b>RefSeq Size:</b>	1981 bp
<b>RefSeq ORF:</b>	888 bp
<b>Locus ID:</b>	57048
<b>UniProt ID:</b>	<a href="#">Q9NRY6</a>
<b>Cytogenetics:</b>	17p13.1
<b>Gene Summary:</b>	May mediate accelerated ATP-independent bidirectional transbilayer migration of phospholipids upon binding calcium ions that results in a loss of phospholipid asymmetry in the plasma membrane. May play a central role in the initiation of fibrin clot formation, in the activation of mast cells and in the recognition of apoptotic and injured cells by the reticuloendothelial system. Seems to play a role in apoptosis, through translocation of cardiolipin from the inner to the outer mitochondrial membrane which promotes BID recruitment and enhances tBid-induced mitochondrial damages.[UniProtKB/Swiss-Prot Function]